

**West Community Council**  
**January 9, 2013**

**TO:** Chair and Members of the West Community Council

**Original Signed**

**SUBMITTED BY:** \_\_\_\_\_  
Jane Fraser, ~~D~~irector, Planning & Infrastructure

**DATE:** December 7, 2012

**SUBJECT:** Margeson Drive Update

**INFORMATION REPORT**

**ORIGIN**

Periodic updates on the Margeson Drive project appeared on the status sheet for Northwest Community Council.

**BACKGROUND**

Margeson Drive follows a portion of a roadway alignment that was originally established by the Province and ran from the Aerotech Interchange on Highway 102, around or through Wellington, Beaver Bank, Middle Sackville and Lucasville to Hammonds Plains Road near the Pockwock intersection. When the responsibility for this regional roadway was abandoned by the Province in 2000, HRM adopted a shortened version and classified it as a collector road rather than a regional highway.

**DISCUSSION**

The first elements of the Margeson Drive corridor were opened to traffic in 2010. This consisted of an interchange on Highway 101 and a roadway connection from the interchange to a roundabout intersection on Trunk 1. The section from the interchange south to Stonewick Cross is currently undergoing an engineering design process. Design and construction of additional sections of Margeson Drive and MacLennan Drive will be included in the five year Project Plan.

The attached project information sheet now appears on the halifax.ca website.

**BUDGET IMPLICATIONS**

There are no budget implications to this update. Budget implications associated with design or construction of Margeson Drive are dealt with through the standard project budgeting process.

**FINANCIAL MANAGEMENT POLICIES / BUSINESS PLAN**

This report complies with the Municipality's Multi-Year Financial Strategy, the approved Operating, Project and Reserve budgets, policies and procedures regarding withdrawals from the utilization of Project and Operating reserves, as well as any relevant legislation.

**COMMUNITY ENGAGEMENT**

Several community engagement sessions associated with Margeson Drive have been held in the past and will resume in February, 2013.

**ATTACHMENTS**

Project Plan: Margeson Drive – Highway 101 to Lucasville Road

---

A copy of this report can be obtained online at <http://www.halifax.ca/commcoun/cc.html> then choose the appropriate Community Council and meeting date, or by contacting the Office of the Municipal Clerk at 490-4210, or Fax 490-4208.

Report Prepared by : David McCusker, P.Eng., Manager, Strategic Transportation Planning, 490-6696

**Original Signed**

Report Approved by: Austin French, Manager, Planning, 490-6717

---

**PROJECT PLAN**

**MARGESON DRIVE: HIGHWAY 101 to LUCASVILLE ROAD**

Version 1.3  
December, 2012

**PROJECT DESCRIPTION**

Margeson Drive is a collector road which will connect Trunk 1 in Middle Sackville to Lucasville Road in the vicinity of Atlantic Playland. In future, the road may be extended northward to Beaver Bank.

From Highway 101 to the Sackville River, the roadway will be controlled access with well-spaced intersections and no driveways. From the Sackville River to Lucasville Road, the road will be built as a subdivision street with driveways along it. The road will be two lanes wide with bike lanes. It is expected that the posted speed limit will be 50 km/h on the subdivision street portion and 70 km/h on the controlled access portion.

See the attached maps for additional detail.

**JUSTIFICATION / RATIONALE**

This road alignment was originally part of a major provincial roadway that extended from the Highway 102 interchange at Aerotech to the Highway 103 interchange at Upper Tantallon. In 2000, the Province turned over responsibility for this corridor to HRM. The roadway then became classified as a collector street. As subsequent subdivision applications were submitted for approval, the corridor for Margeson Drive was preserved and, in the case of Cranley Drive, a section of the collector street was constructed.

**TIME LINE**

	2012		2013										2014																	
	N	D	J	F	M	A	M	J	J	A	S	O	N	D	J	F	M	A	M	J	J	A	S	O	N					
Engineering Design																														
Public Consultation																														
Tendering																														
Construction																														

**COST ESTIMATE**

A preliminary cost estimate will be determined during the Engineering/Environmental pre-design stage.

**PUBLIC CONSULTATION**

Public consultation will be held in early 2013 to receive input on the design features for the Sackville River Bridge and the roadway.

**RISKS**

There are a number of environmental considerations to be accounted for in the design of the Sackville River crossing.

**DEPENDENCIES**

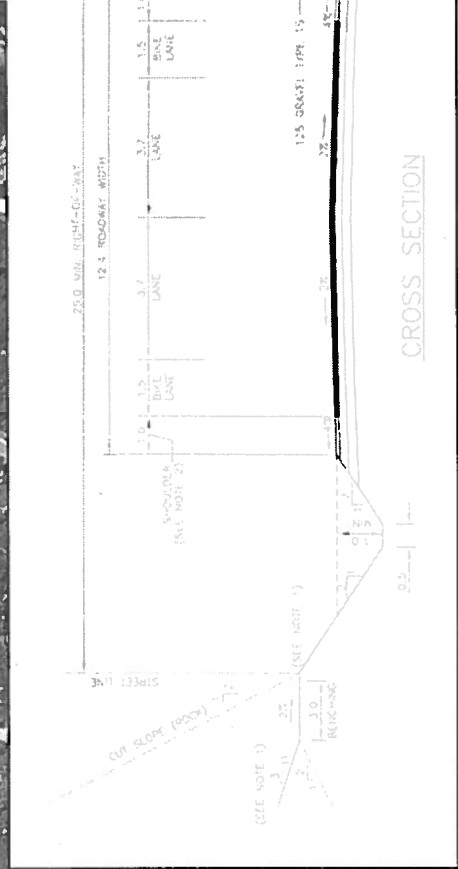
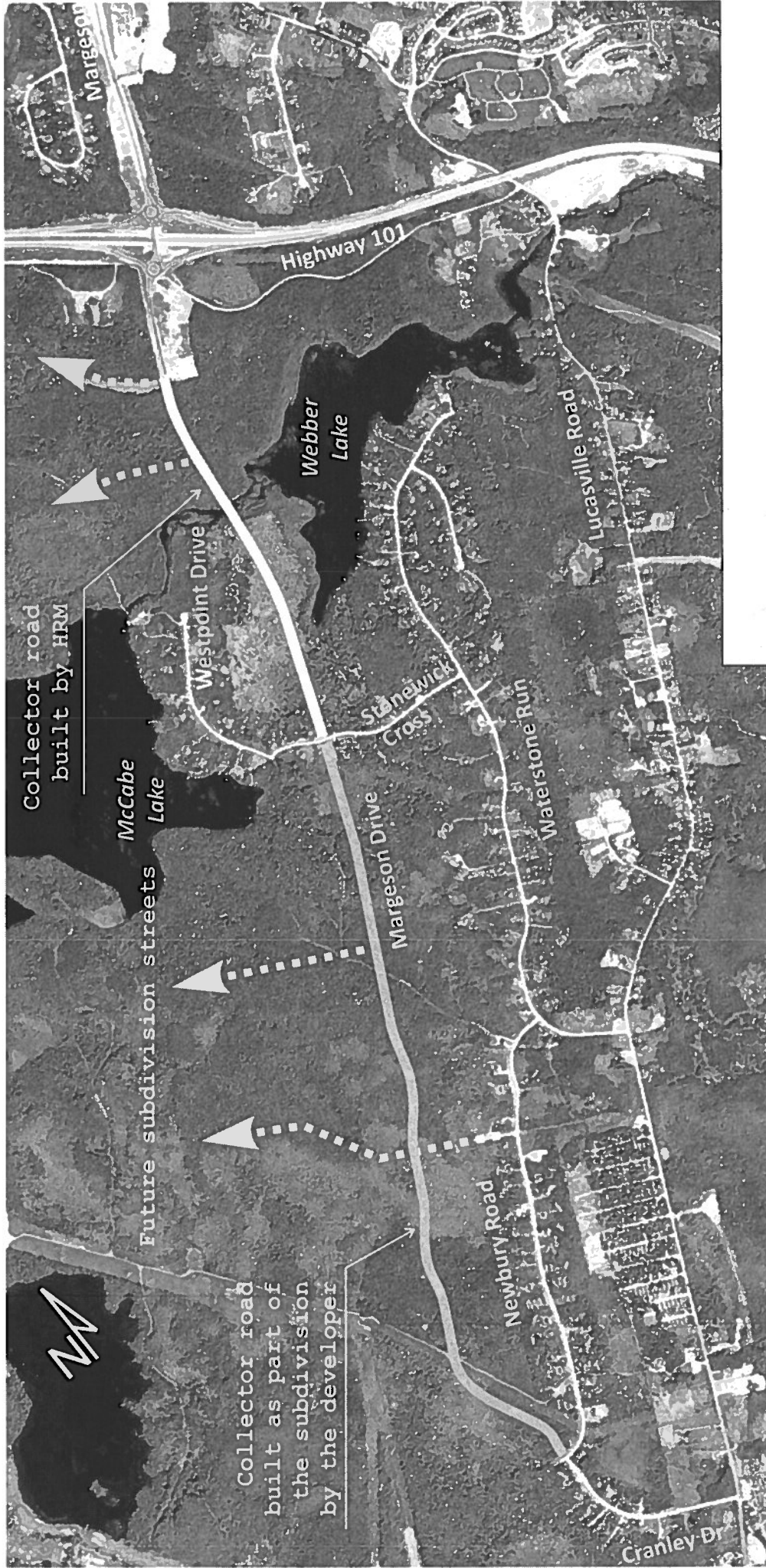
Margeson Drive is intended to collect traffic from the Waterstone, Glen Arbour and White Hills area and convey it to Lucasville Road and Highway 101. To be fully functional, a portion of the road and connections to it must be built by developers as part of their subdivisions.

**DESIGN CONSIDERATIONS**

Environmental surveys will be undertaken in connection with the crossing of the Sackville River.

**LAND ACQUISITION**

Some property for the corridor remains to be acquired.



shown are for illustrative purposes only

1:20 000 Scale

Margeson Drive - Lucasville Road to Trunk 1

November 2012

Alignment Plan



