

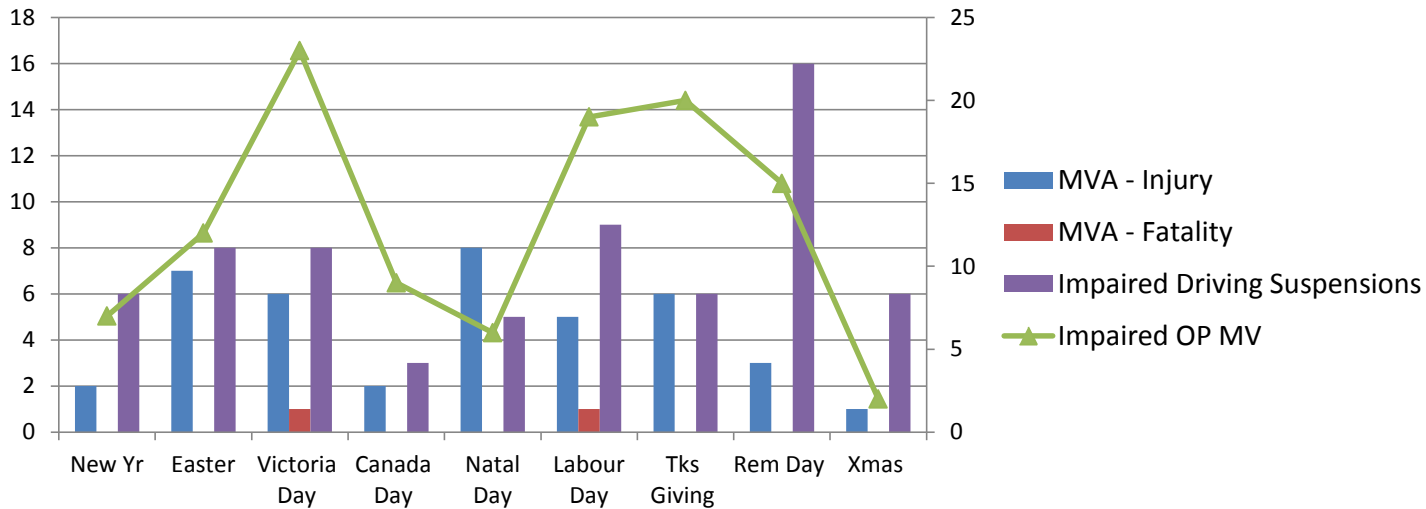


# Halifax District - Board of Police Dashboard - September 8th, 2014

## Motor Vehicle Accidents and Impaired Driving

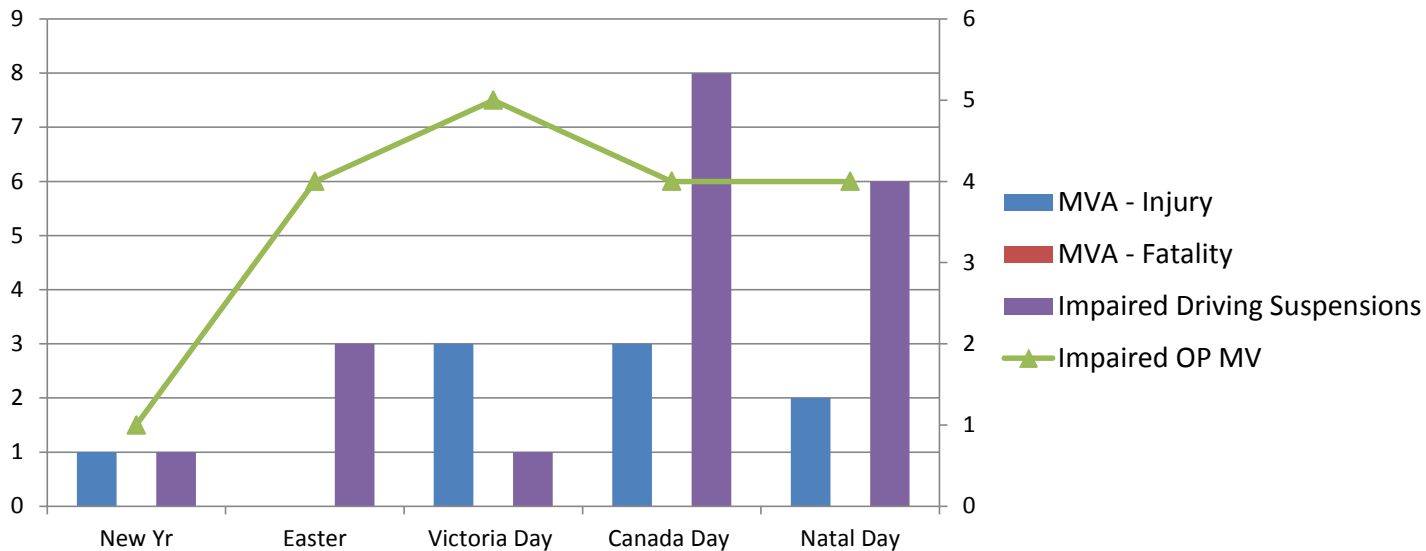
### Summary

2011 - 2012 - 2013 Calendar Years



Within Halifax District a review was done on Motor Vehicle Accidents (MVA's) as well as Impaired Driving charges and suspensions over the nine long weekends throughout the calendar year. In the past three years Impaired Driving charges were consistently higher over the Victoria Day weekend where the Remembrance Day weekend had the most Impaired Driving Suspensions. MVA's increased over the Natal Day weekend while the Christmas period shows the least in both MVA's and Impaired Driving charges.

January 1st - August 4th, 2014



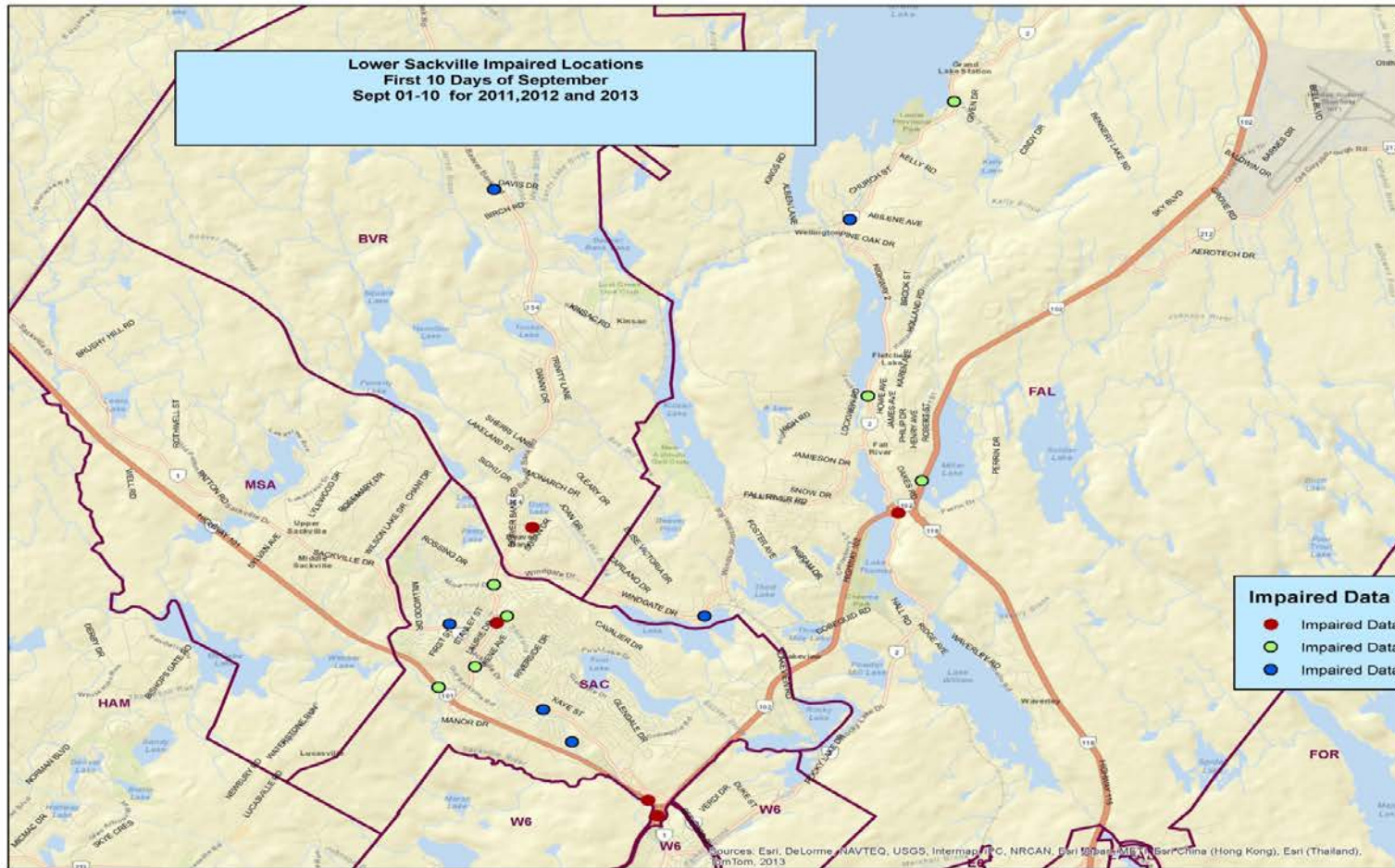
### Jan. 1st - Aug 4th, 2014

From January 1st to August 4th, 2014 the pattern continues with Victoria Day displaying the most Impaired Driving charges and Canada Day having a slight increase in Impaired Driving suspensions. Within the data MVA's identified 13% of Impaired Driving Charges or Suspensions, Traffic Stops 50% and Checkpoints 37%. During this period Halifax District experienced a -10% decrease in MVA's overall. Of all accidents occurring from Jan. 1st - Aug. 4th, Impaired Driving was noted in 3% of those.



# Halifax District - Board of Police Dashboard - September 8th, 2014

September 1st - 10th - 2011 / 2012 / 2013



RCMP

Halifax District

Sheila Serfas  
Crime Analyst  
240-1696

**Impaired Data Sept 1- 10 2011-2013**

- Impaired Data Sept 1 - 10 2013 Events
- Impaired Data Sept 1 - 10 2012 Events
- Impaired Data Sept 1 - 10 2011 Events

**\* All Data Subject to Verification \***  
 Questions regarding this map should be directed to Halifax District RCMP



## Summary

Halifax District continues to strategically utilize Road Safety data to deploy resources for the September 5th National Impaired Driving Enforcement Day. Impaired Driving data was mapped for the first ten days of September for the past three years to help strategically identify potential checkpoint locations. The same concept will apply for the Labour Day weekend however Serious Injury and Fatal Motor Vehicle accidents will be added to identify historic Road Safety issues.