



Budgetary Overview

As of March 31, 2015, compensation should be at approximately 100 percent of the annual plan, while revenue and all other expenses should be at approximately 98 per cent.

- Revenue – 106.32 per cent.
• Compensation overall (including overtime) – 98.83 per cent. Overtime – 116.15 per cent.
• All other expenses – 114.17 per cent.
• Net Budget overall – 99.38 per cent.

Upcoming Events

National Volunteer Week – April 12-18

As part of National Volunteer Week, HRP will formally recognize its volunteers at the 2015 Volunteer Dinner and Awards on April 16.

Collectively, HRP’s volunteers, numbering in excess of 110, contribute tens of thousands of hours each year, helping to make many of our community outreach and crime prevention programs possible.

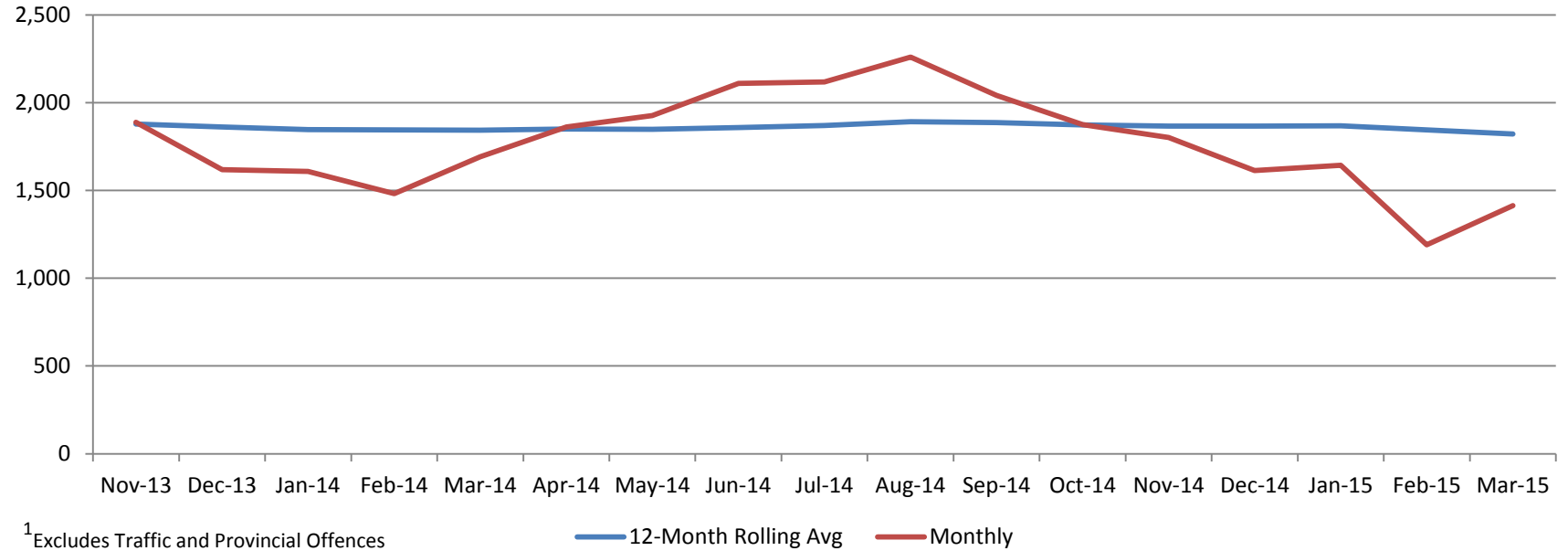
National Public Safety Telecommunication Week – April 12-18

National Public Safety Telecommunications Week recognizes the men and women who work behind the scenes to help citizens in times of crisis, sending out the help they need and providing operational support to emergency responders.

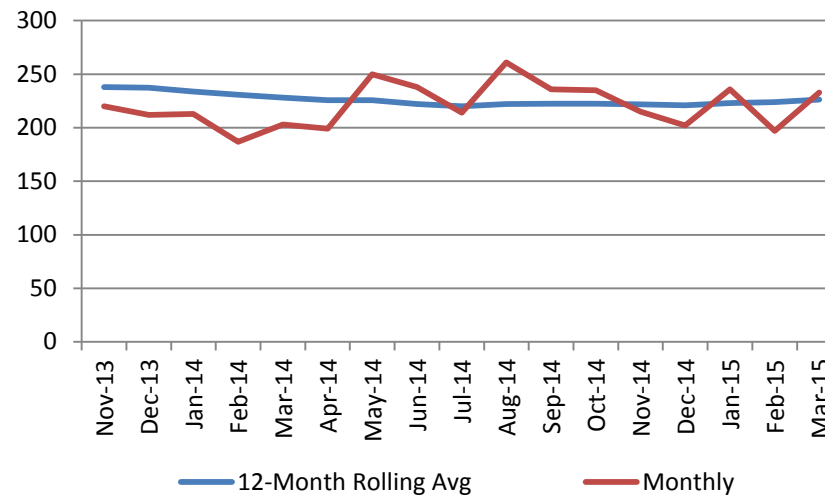
HRP employs 80 Civilian Communications Radio Technicians (CCRTs) in our Integrated Emergency Services (IES) center. IES provides dispatch services to HRP, Halifax RCMP and Halifax Regional Fire and Emergency. It is the largest and busiest 9-1-1 Public Service Answering Point (PSAP) in Nova Scotia.

Crime Trends – HRM Wide

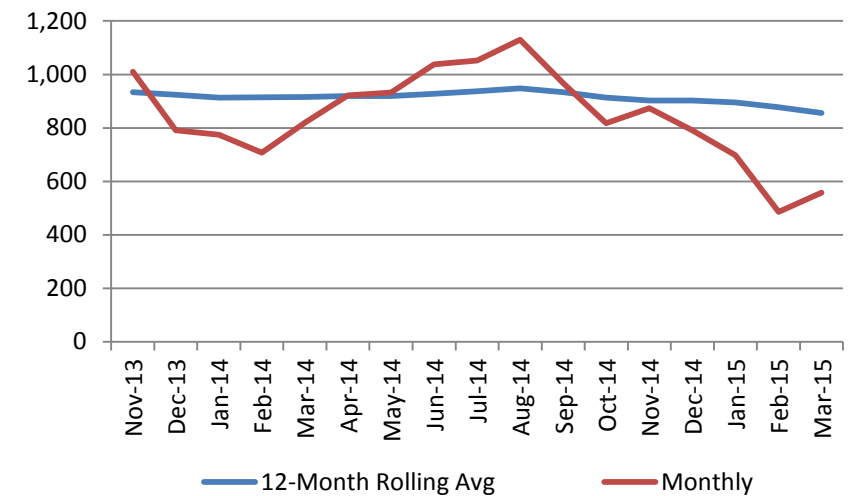
Total Crime - General Occurrences (HRM)¹



Crime Against Persons - General Occurrences (HRM)



Crime Against Property - General Occurrences (HRM)



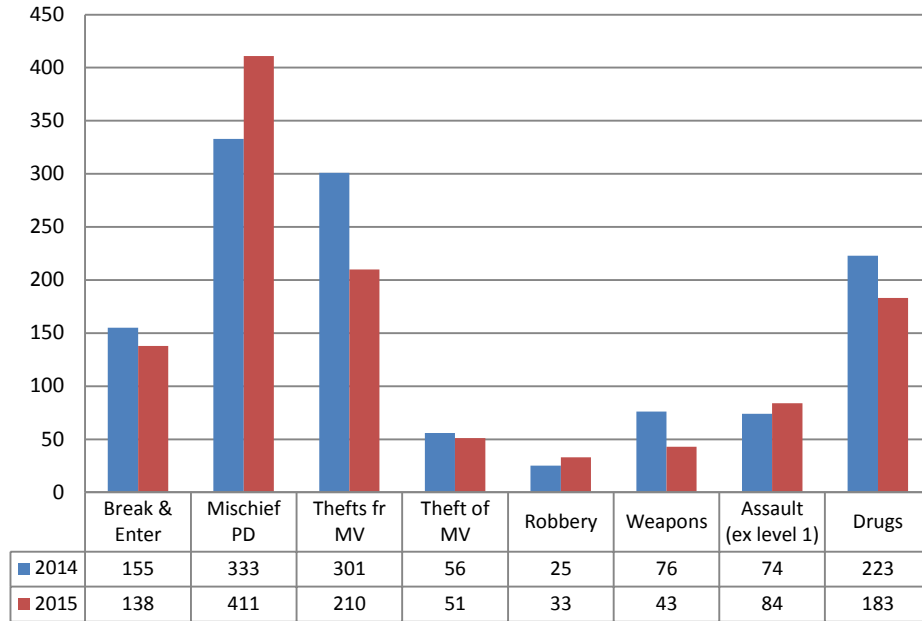
\* Above charts represent primary offences.



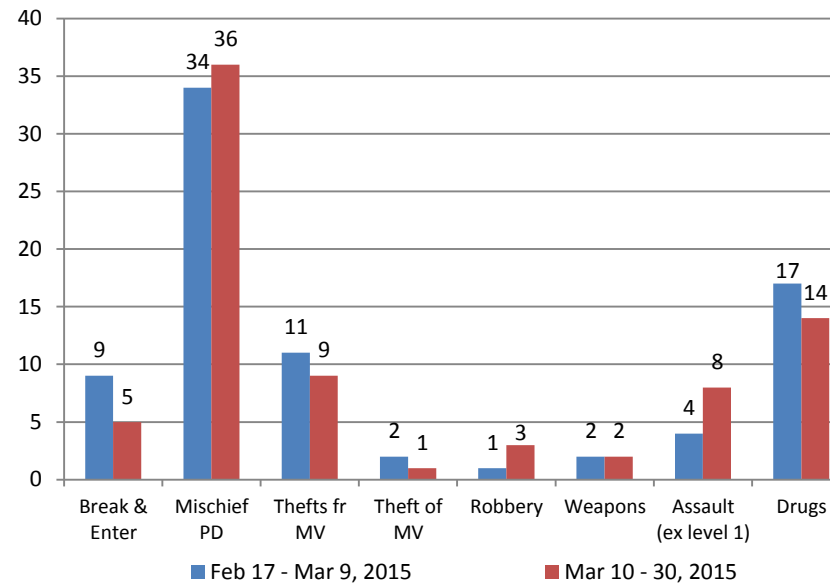
## Comstat Incidents - HRP

## Comstat Overview

### HRP Comstat - General Occurrences (Jan. 1 to Mar. 31)



### Central Division - Comstat General Occurrences

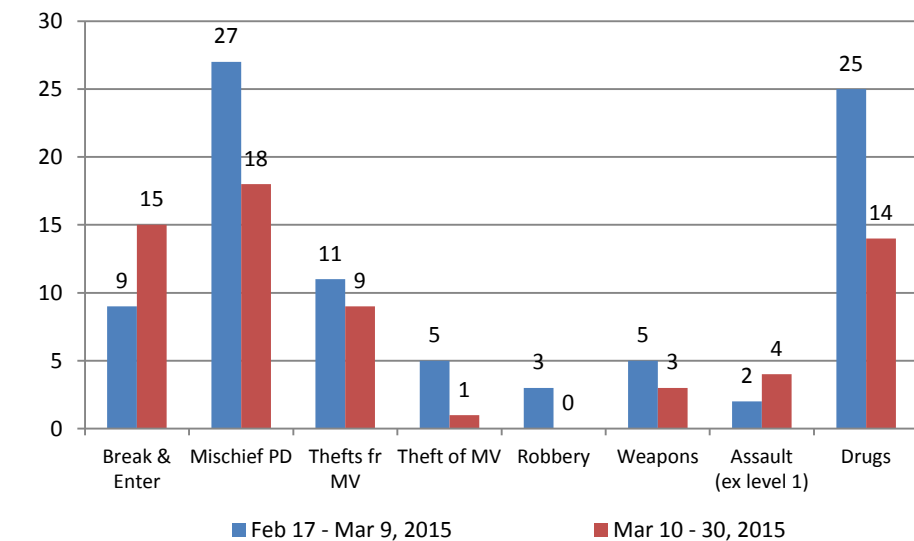


Comstat incidents comprise break and enters, mischief property damage, thefts from vehicles, thefts of vehicles, robbery, weapon-related offences, assault causing bodily harm, assault with a weapon, aggravated assault and drug-related offences.

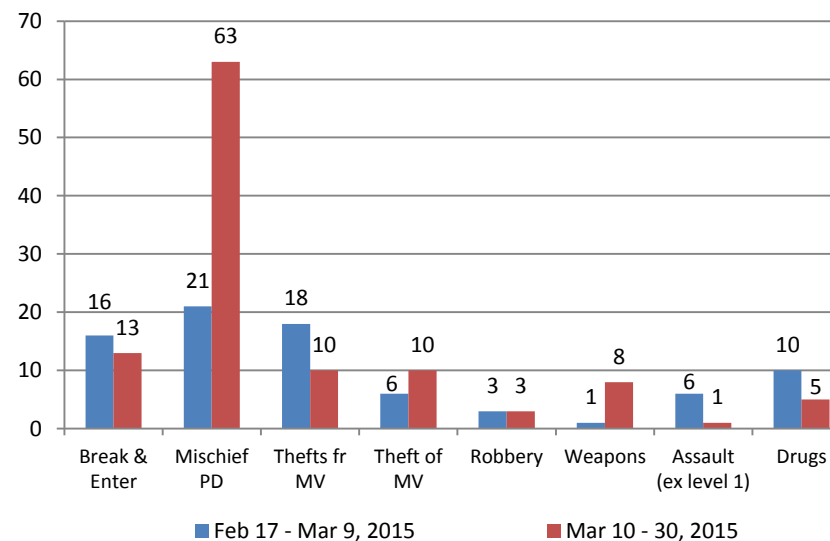
#### Central Division

Central Division had a total of 51 property offences which is a decrease of five incidents or 8.9 per cent over the previous period. The decrease is attributed to a reduction in break and enter, theft from motor vehicle and theft of motor vehicle offences throughout the Division. There was a total of 13 person/weapons incidents which is an increase of six incidents or 85 per cent over the previous period. This increase is mainly attributed to an increase in assault, weapons and robbery offences in the downtown area. Charges were laid in relation to a stabbing in the Spring Garden Road area and a weapons offence in the Robie Street area.

### East Division - Comstat General Occurrences



### West Division - Comstat General Occurrences



#### East Division

East Division had a decrease of 12 incidents or 19 per cent in total person/property offences. This is attributed to a decrease in robbery, mischief, theft of motor vehicle and weapons offences throughout the Division. A total of 15 break and enters were reported, an increase of six incidents or 66 per cent over the previous period. Of the 15 incidents, seven were laundry room-related and occurred in the north end of Dartmouth.

#### West Division

This past comstat period saw an increase in mischief/property damage incidents. A number of bus shelters were damaged on two separate occasions, and on the second occasion, a witness was able to provide vehicle information which lead to possible suspects being identified. These incidents are still under investigation and remain the focus for this period.

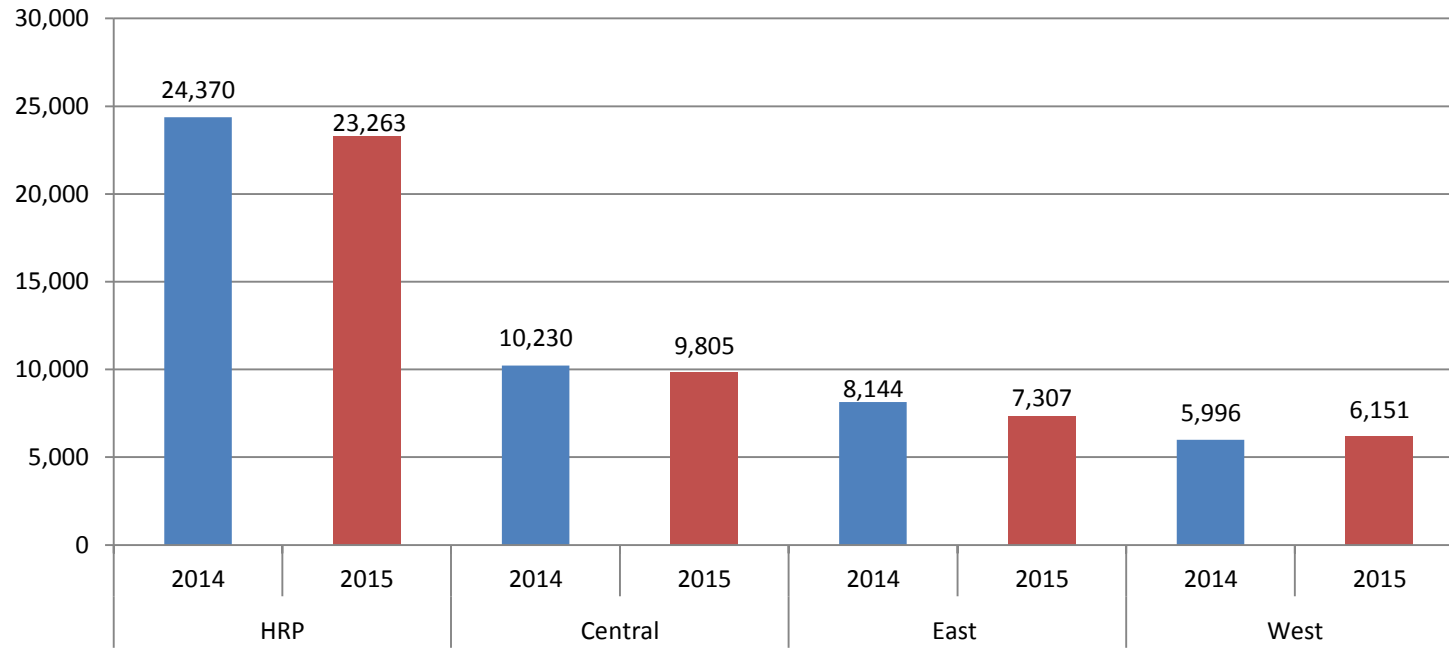
\* Above charts represent primary offences.



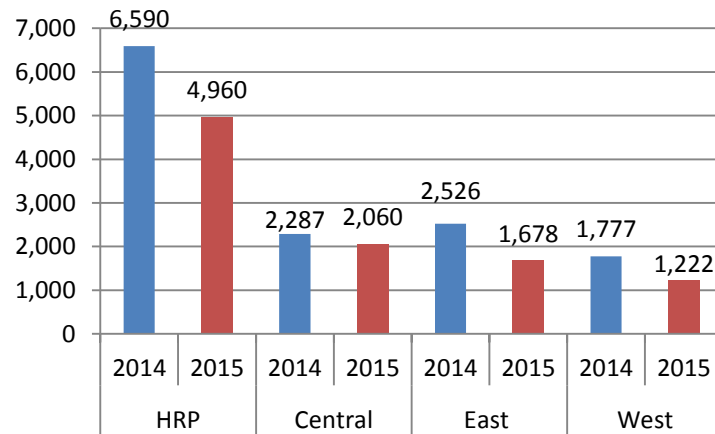
# HRM Board of Police Commissioners Monthly Dashboard: March 31, 2015

## Calls for Service - HRP

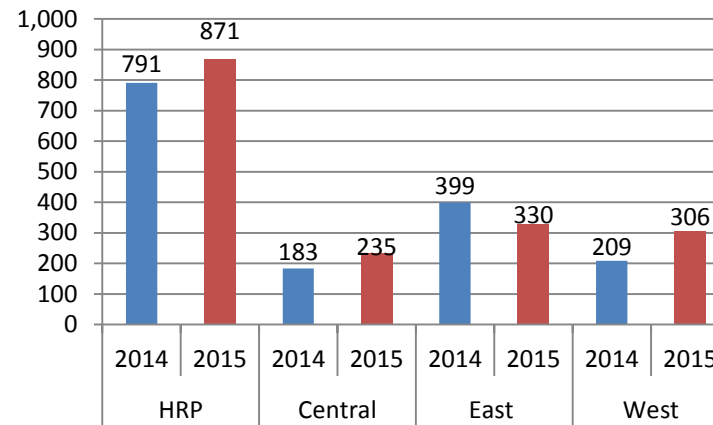
### HRP Calls for Service (Jan. 1 to Mar. 31) (excluding Traffic Stops & Proactive Assignments)



### Traffic Stops (Jan. 1 to Mar. 31)

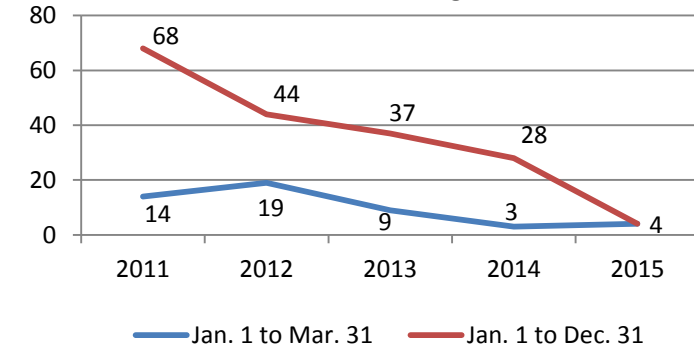


### Proactive Assignments (Jan. 1 to Mar. 31)



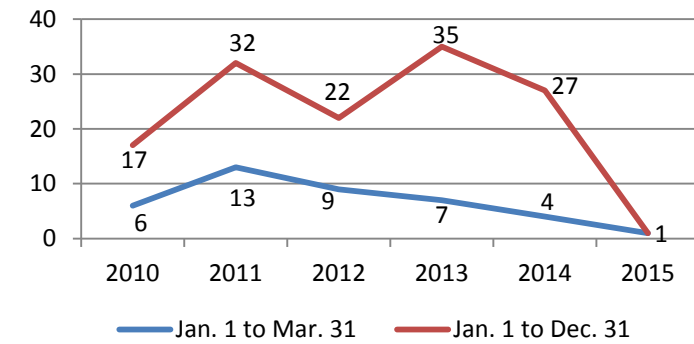
## Firearms & Homicides - HRM Wide

### Firearms Discharged



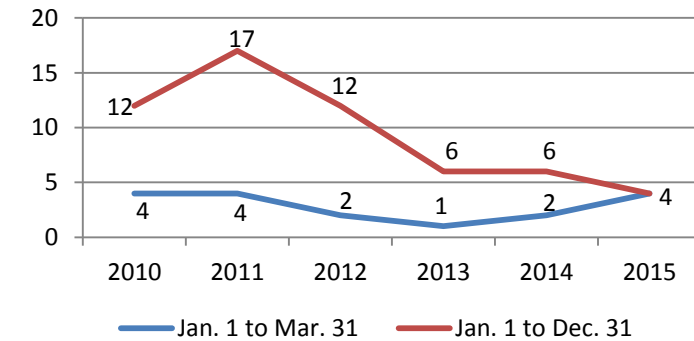
Includes criminally motivated shootings only.

### Attempted Homicides



Error rate +/- 1 due to reclassification after data extraction.

### Homicides



Homicide figures refer to # victims, not events.

2013 stats do not include 2 motor vehicle-related deaths.