



### Budgetary Overview

The final reconciliation of the 2014-15 fiscal year is as follows:

- Revenue – 108.44 per cent.
- Compensation overall (including overtime) – 99.11 per cent. Overtime – 108.38 per cent.
- All other expenses – 114.10 per cent.
- Net Budget overall – 99.45 per cent. (surplus )

### Upcoming Events

#### Police Day and National Prescription Drug Drop-off Day – May 9, 2015

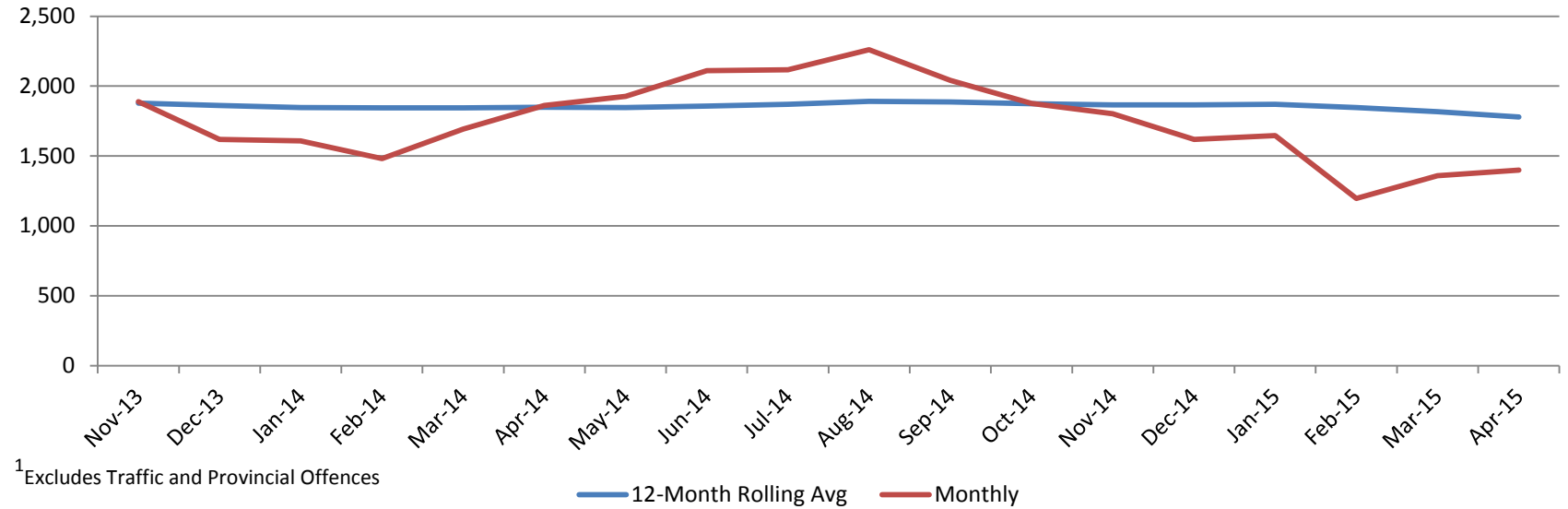
Halifax Regional Police and Halifax District RCMP will kick-off Police Week with a free showcase at Halifax Shopping Centre on May 9 from 9:30 a.m. to 5 p.m.

The showcase is a chance for us to de-mystify policing for the citizens we serve. It will feature hands-on displays and demonstrations that highlight the many services we provided in the community while giving an inside look at the fascinating world of police work. Booths will be set up on the lower level near Sears and emergency vehicles will be on display in the parking area outside Sears.

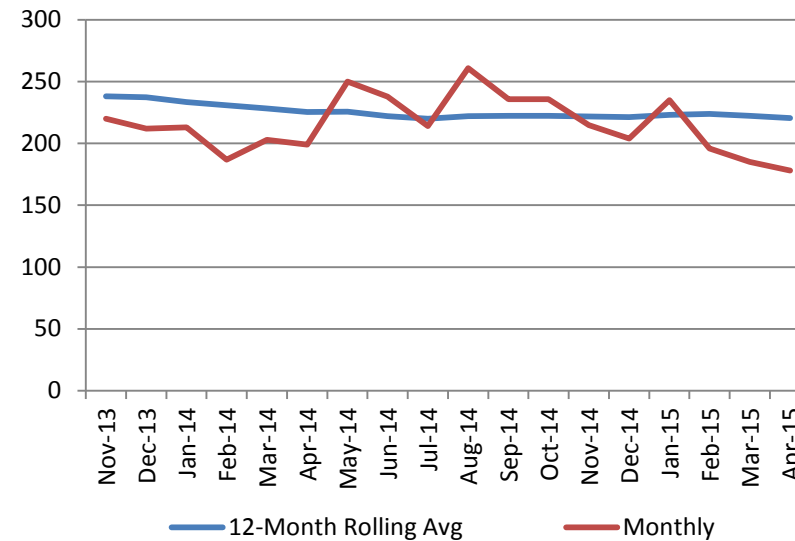
Also at this year’s event, the Public Safety Office, in conjunction with the Nova Scotia Chiefs of Police Association and the Nova Scotia Health Authority, will host a free drug drop-off location as part of National Prescription Drug Drop-Off Day. Citizens can bring any prescription drugs they want to get rid of to the drop-off booth and we’ll make sure they’re disposed of properly.

### Crime Trends – HRM Wide

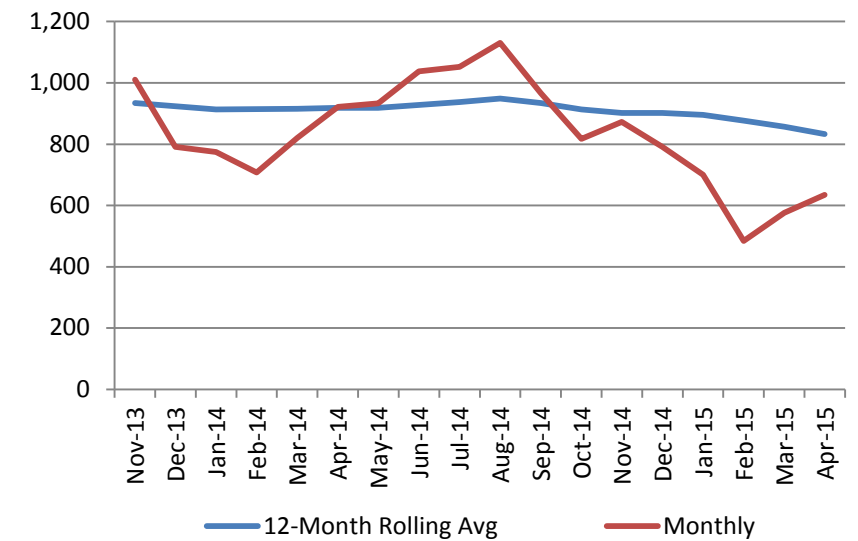
#### Total Crime - General Occurrences (HRM)<sup>1</sup>



#### Crime Against Persons - General Occurrences (HRM)



#### Crime Against Property - General Occurrences (HRM)



\* Above charts represent primary offences.



Comstat Incidents - HRP

Comstat Overview

Comstat incidents comprise break and enters, mischief property damage, thefts from vehicles, thefts of vehicles, robbery, weapon-related offences, assault causing bodily harm, assault with a weapon, aggravated assault and drug-related offences.

**Central Division**

Overall, Central Division saw a decrease of 12.50 per cent in total person/property offences. This decrease is mainly attributed to decreases in both mischief, down 16 incidents or 39.02 per cent, and property damage offences. Of note, officers laid charges in relation to an assault with a weapon incident in the downtown area after arresting a suspect within two minutes of arriving on scene.

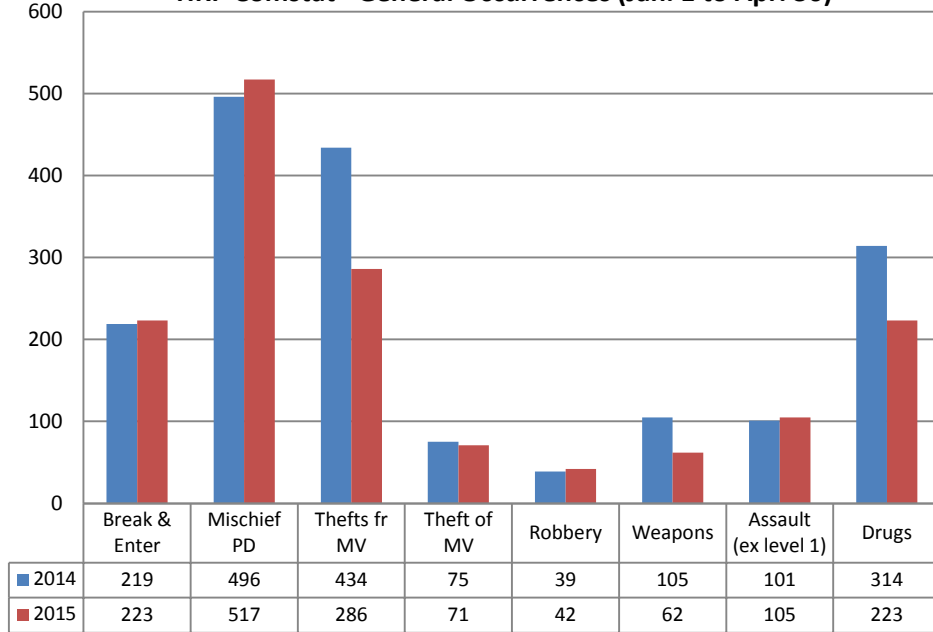
**East Division**

Overall, East Division had an increase of 30 incidents or 51.72 per cent in total person/property offences. This has been primarily attributed to a continued series of break and enter offences involving laundry rooms in the north end of Dartmouth, coupled with a series of thefts from motor vehicles in which tires have been targeted throughout the Division. Of note, officers laid charges in relation to two robberies in the Woodside area.

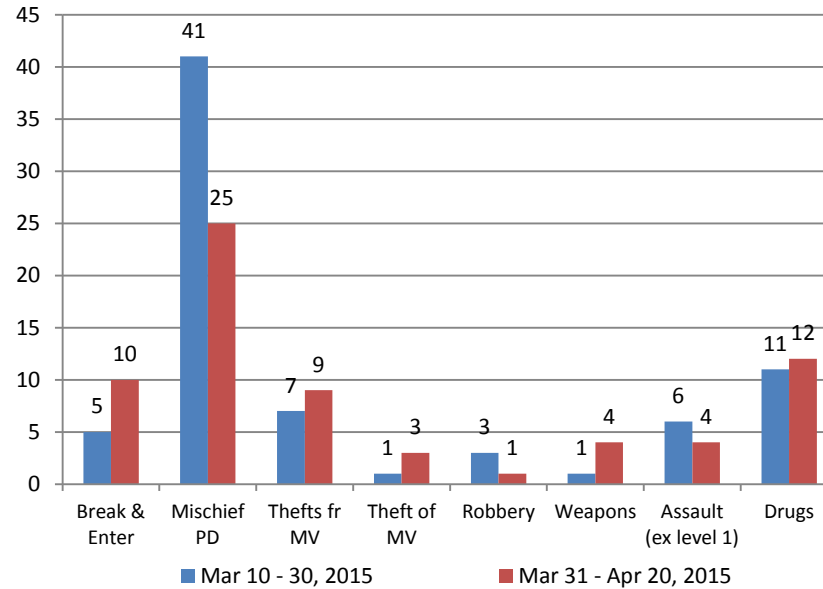
**West Division**

Overall, West Division saw a decrease of 20 incidents in total person/property offences. There was an increase in residential break and enters and theft from motor vehicle offences. Two suspects were identified in the residential breaks and have since been charged. Two youths were apprehended in relation to the thefts from motor vehicles; officers spoke with them but no charges were laid. The focus for this period will be thefts from motor vehicles.

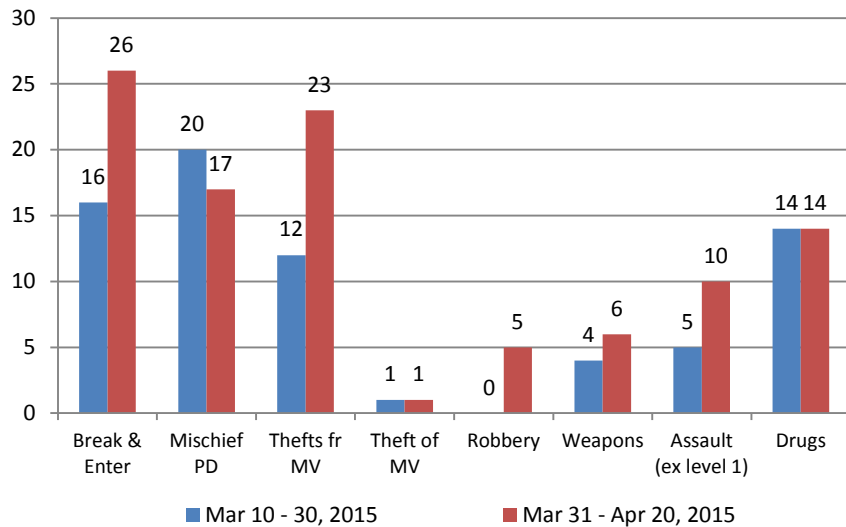
HRP Comstat - General Occurrences (Jan. 1 to Apr. 30)



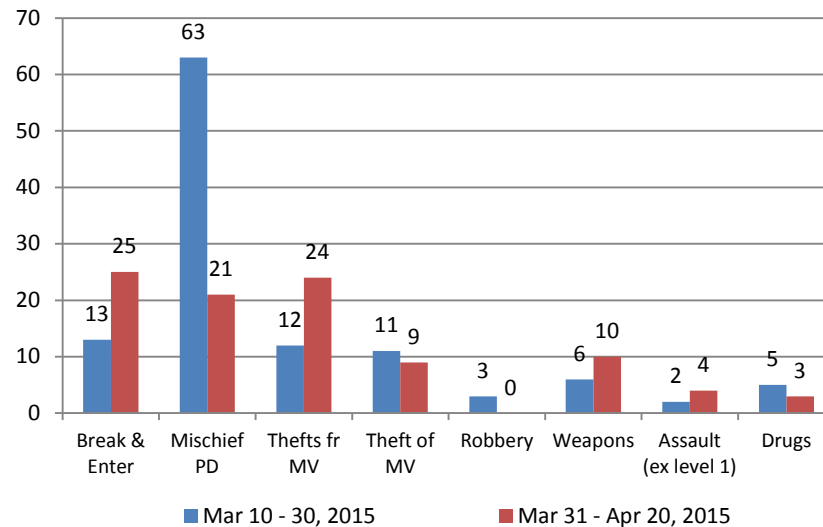
Central Division - Comstat General Occurrences



East Division - Comstat General Occurrences



West Division - Comstat General Occurrences



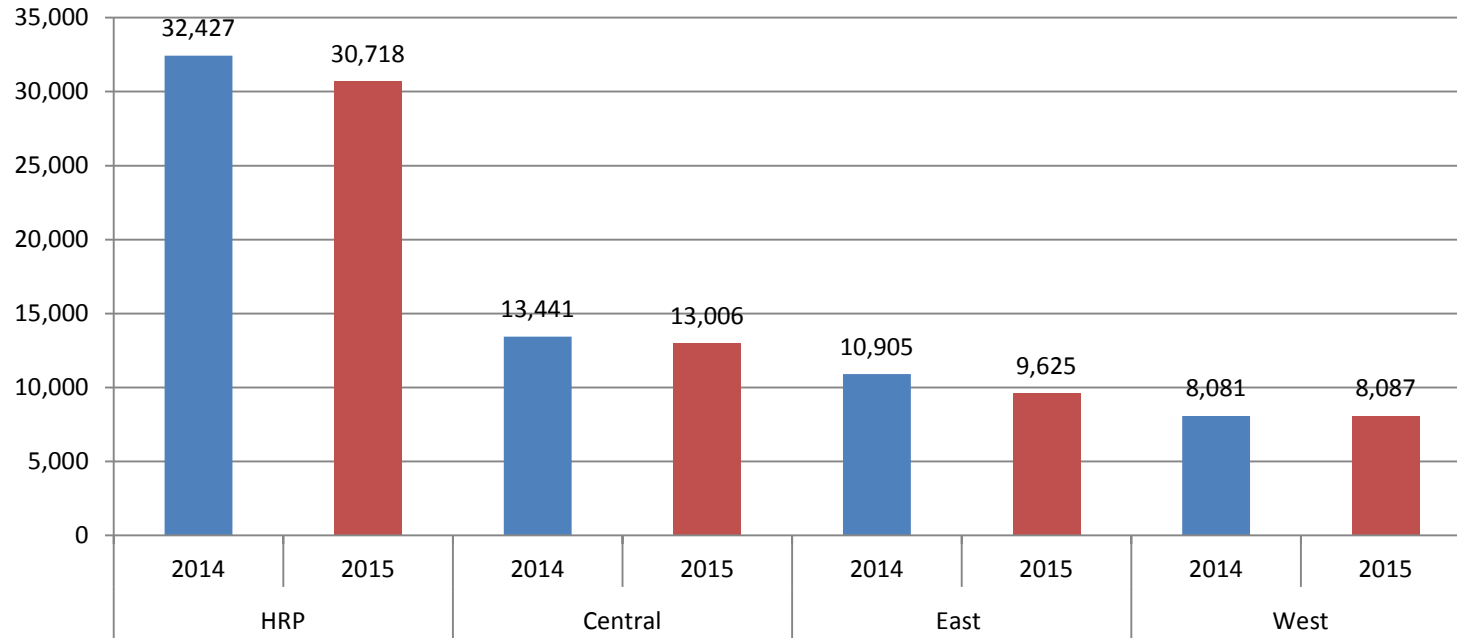
\* Above charts represent primary offences.



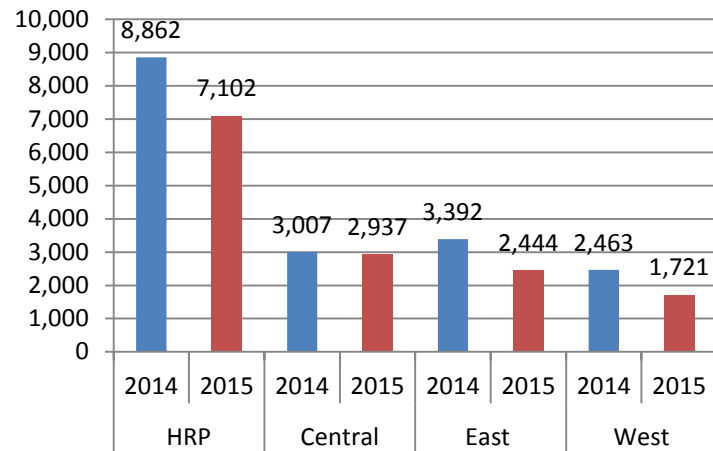
# HRM Board of Police Commissioners Monthly Dashboard: April 30, 2015

## Calls for Service - HRP

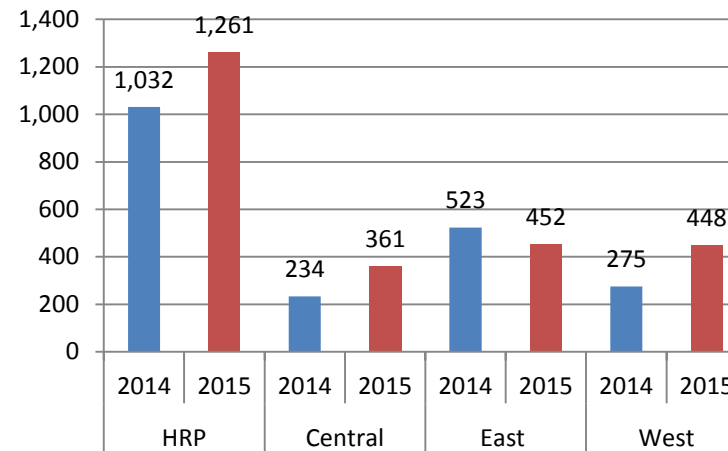
### HRP Calls for Service (Jan. 1 to Apr. 30) (excluding Traffic Stops & Proactive Assignments)



### Traffic Stops (Jan. 1 to Apr. 30)

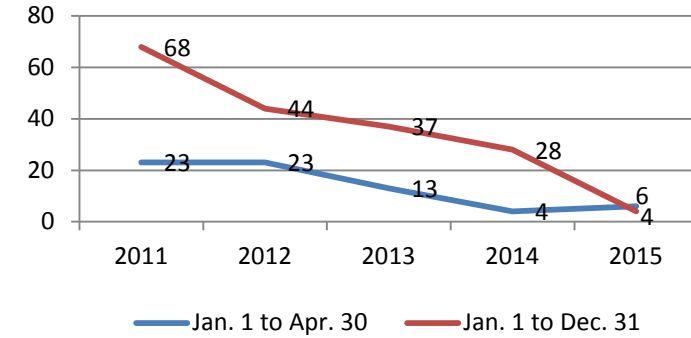


### Proactive Assignments (Jan. 1 to Apr. 30)



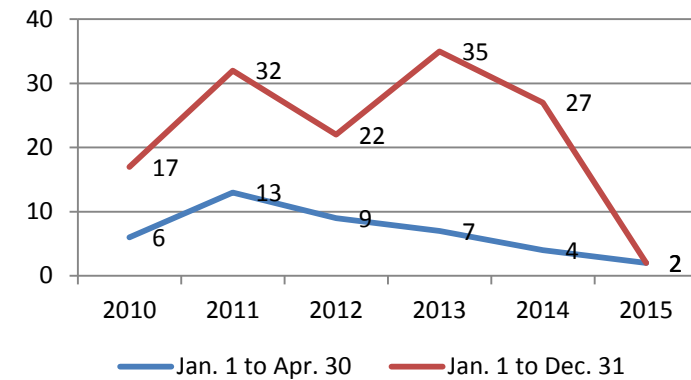
## Firearms & Homicides - HRM Wide

### Firearms Discharged



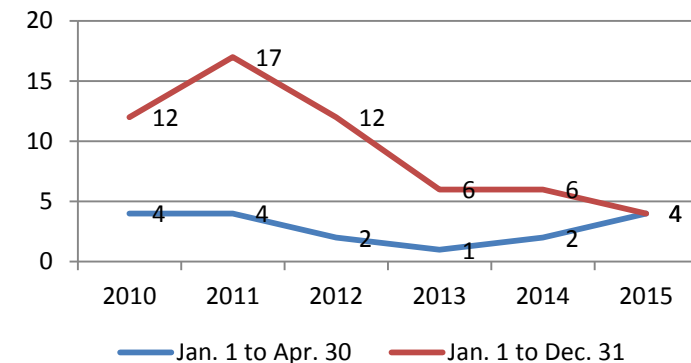
Includes criminally motivated shootings only.

### Attempted Homicides



Error rate +/- 1 due to reclassification after data extraction.

### Homicides



Homicide figures refer to # victims, not events.

2013 stats do not include 2 motor vehicle-related deaths.