



# VEHICLE / PEDESTRIAN COLLISIONS

**RCMP Halifax District:  
January to September 2014**

**DISCLAIMER:** All figures presented in this report reflect the information held on the Versadex system at the time of data extraction and are subject to change without notice.

# Summary

- 13 vehicle/pedestrian collisions were **reported** in the January - September 2014 period in the RCMP Halifax District coverage area.

Note: This report presents strictly vehicle/pedestrian collisions and excludes those incidents involving bicycles.

# Snapshot

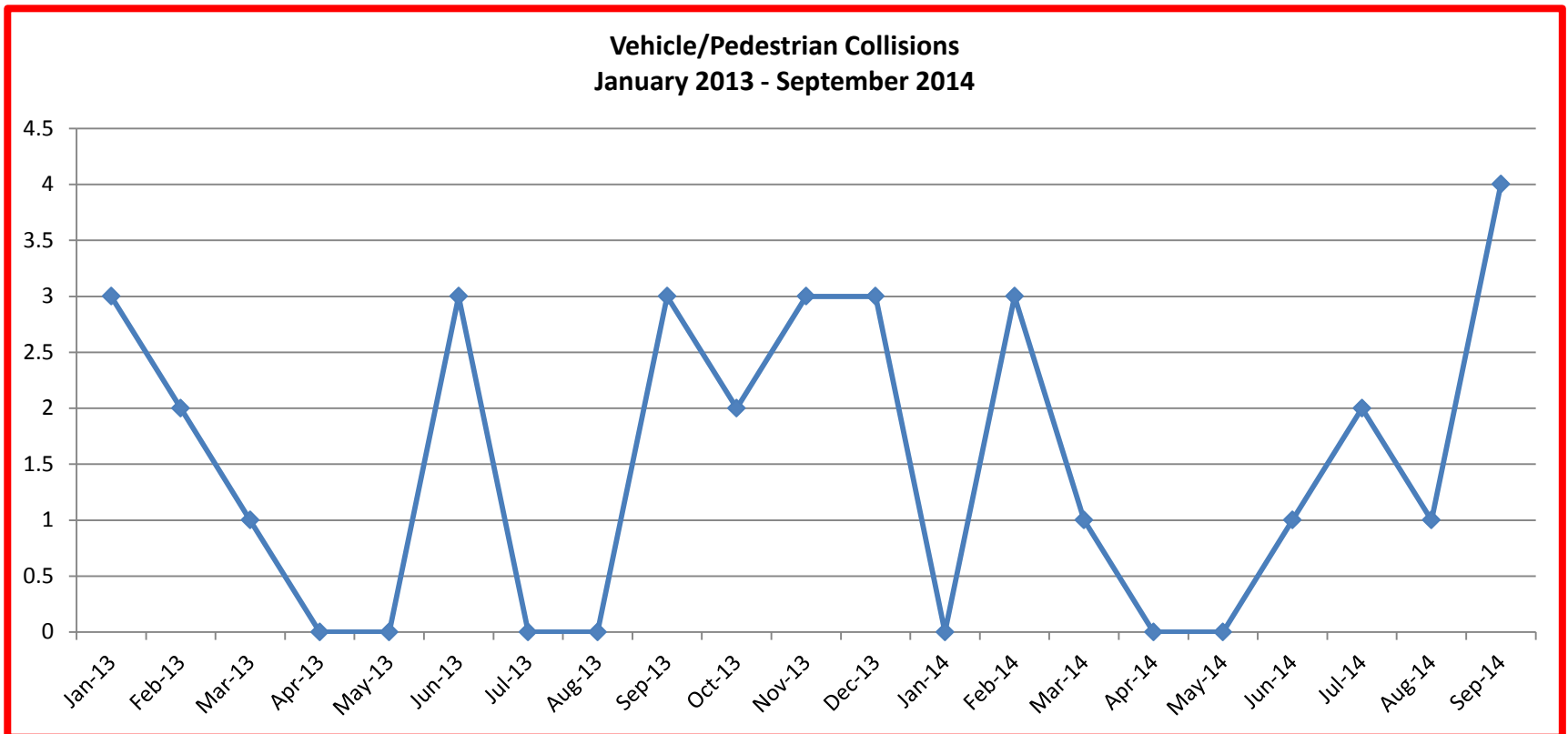
January – September 2014	
Month	# Incidents
January	0
February	3
March	2
April	0
May	0
June	1
July	2
August	1
September	4
<b>TOTAL YTD</b>	<b>13</b>

January – September 2014	
Type*	# SOTs
Driver	4
Pedestrian	0
Pending - SUI	0
No SOT	9
<b>TOTAL YTD</b>	<b>4</b>

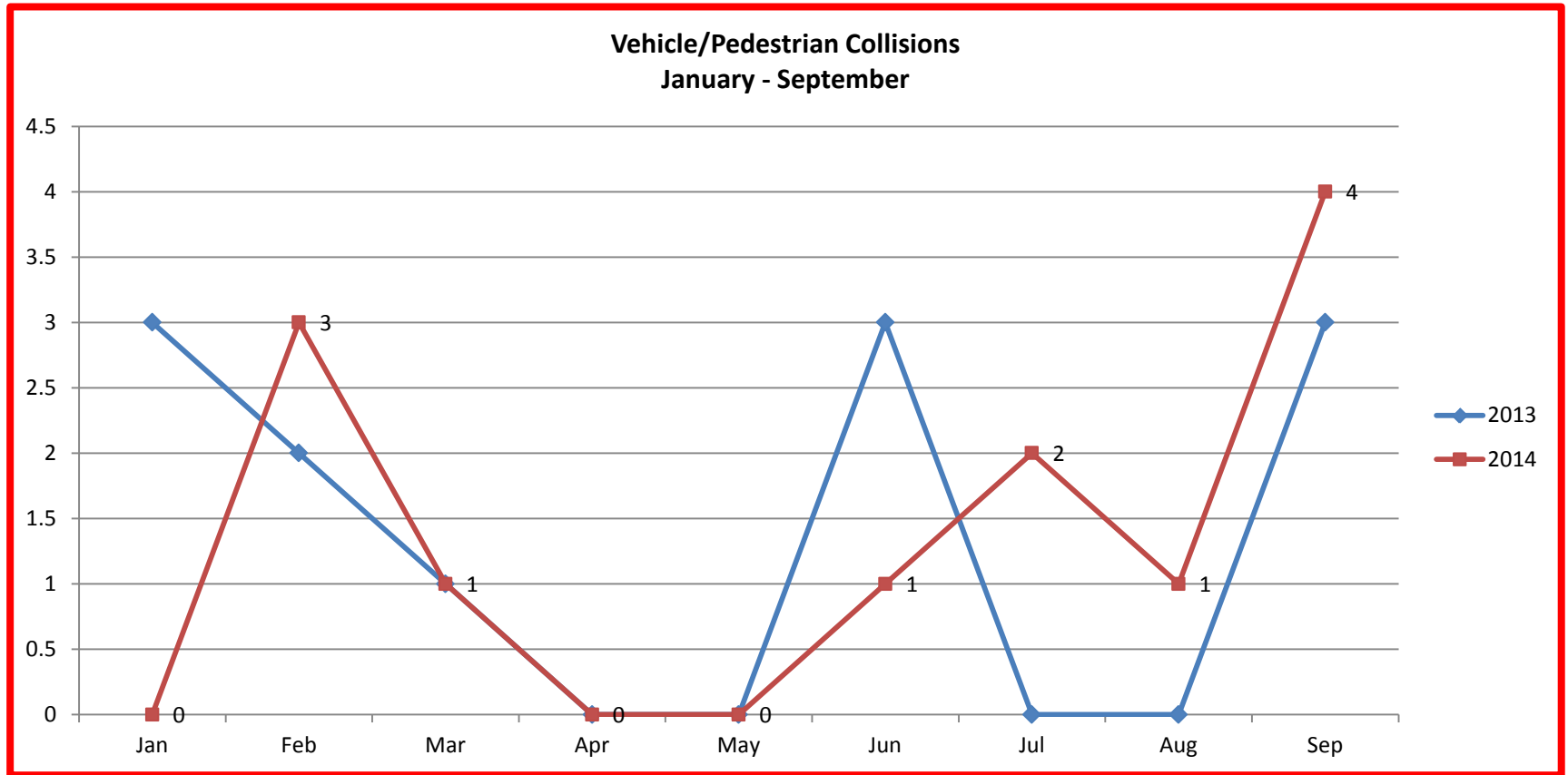
\* Excludes SOTs unrelated to collision (e.g., no insurance)

# Trends

The number of reported vehicle/pedestrian collisions increased by one or +8% in the past nine months of 2014 when compared to January to September of 2013.



# Trends

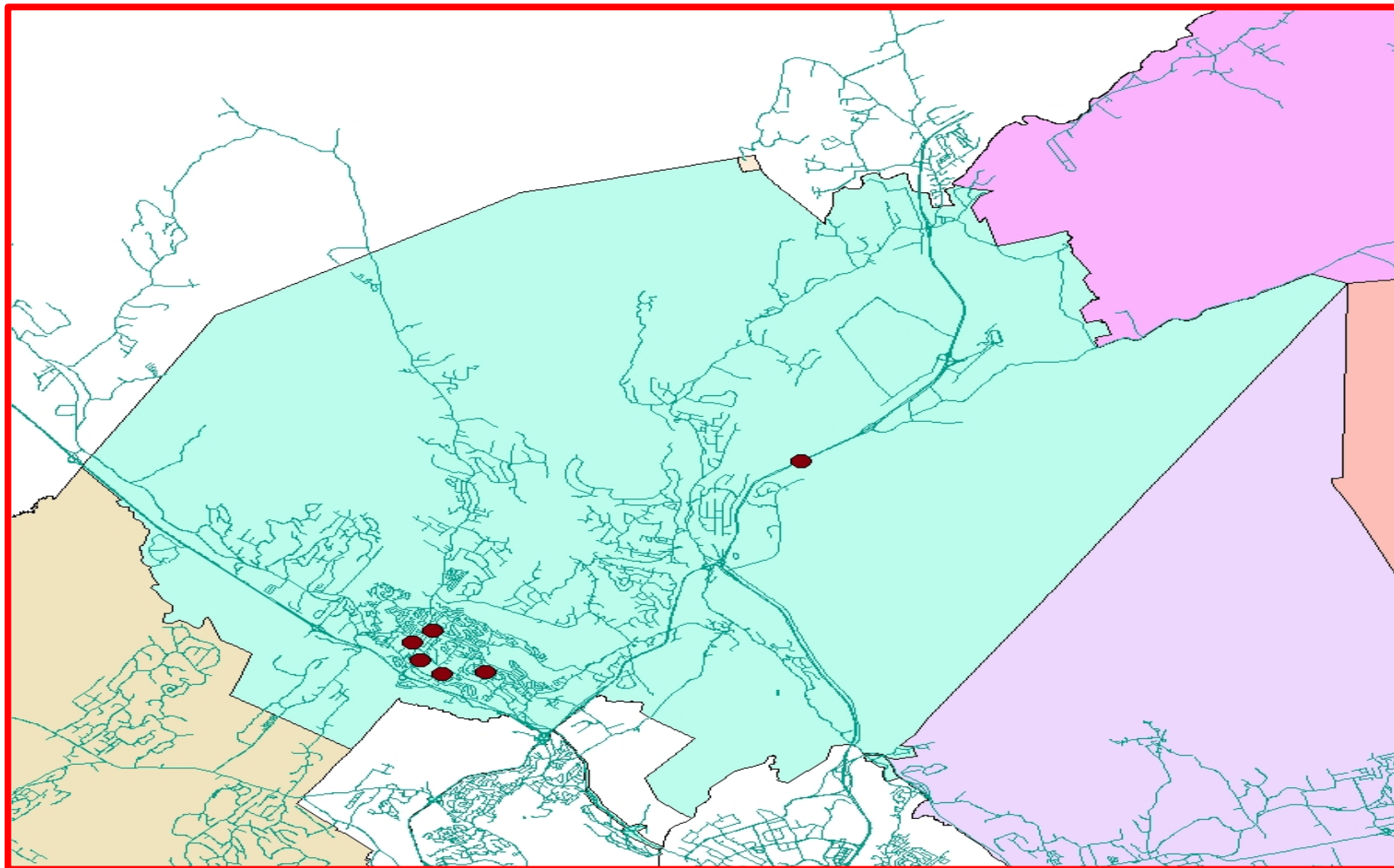


# Districts

Tantallon experienced a substantial decrease in **reported** vehicle/pedestrian collisions in January – September 2014 compared to January - September 2013, while Lower Sackville had eleven collisions in the first nine months of 2014 compared to four over the same period in 2013.

January - September		
District	2013	2014
Cole Harbour	2	1
Lower Sackville	4	11
Musquodoboit Hbr.	0	0
North Central	0	0
Sheet Harbour	0	0
Tantallon	6	1
<b>TOTAL</b>	<b>12</b>	<b>13</b>

# Sackville



# Tantallon





# Collision Types

In the first nine months of 2014 eight of the thirteen incidents of vehicle/pedestrian collisions reported occurred in Parking Lots or Roadside compared to eleven during the same period in 2013.

A total of five occurred in crosswalks (marked or unmarked) in the first nine months of 2014 compared to one during the same period in 2013.

January - September		
COLLISION TYPE	2013	2014
Crosswalks ( Marked or Unmarked )	1 (8%)	5 (38%)
Parking Lots/Roadside	11 (92%)	8 (62%)

# Injuries

62% of the 13 pedestrian victims experienced an injury, seven were minor and one a fatality in the reported incidents between January and September 2014.

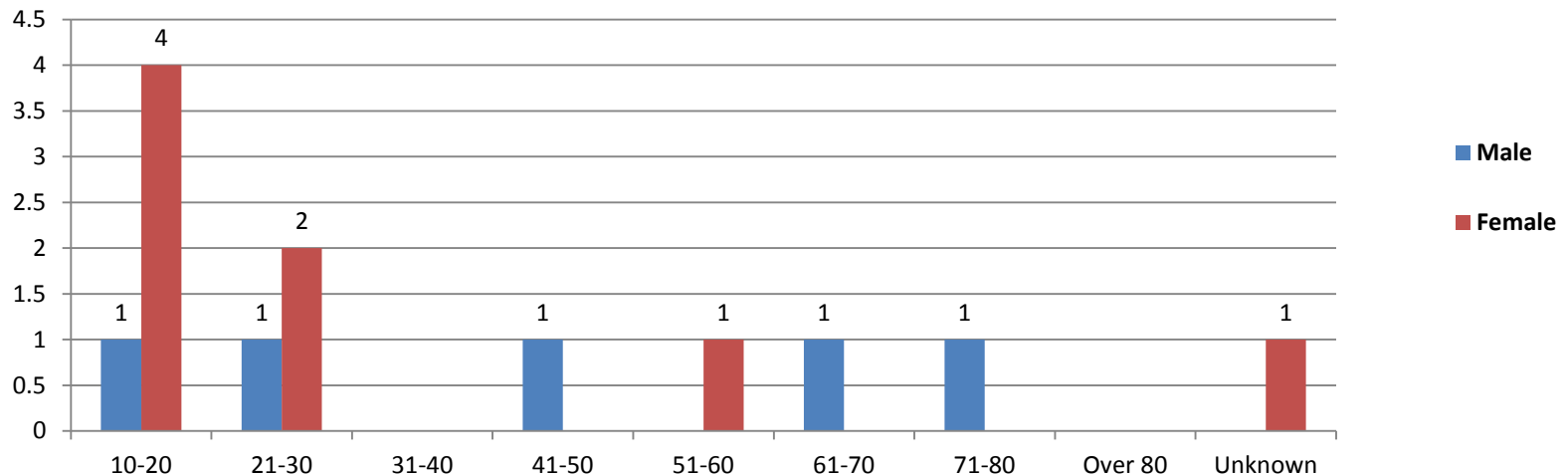
No drivers reported an injury.

January – September 2014		
INJURY TYPE (PEDESTRIANS)	#	%
No Injury	5	38%
Minor	7	54%
Moderate	0	0%
Serious	0	0%
Fatality	1	8%
<b>TOTAL</b>	<b>13</b>	

# Pedestrian Characteristics

67% of all of the pedestrian victims were in the 10 - 30 years age range.

**Vehicle / Pedestrian Collisions  
January - September 2014  
Pedestrian Age Brackets**

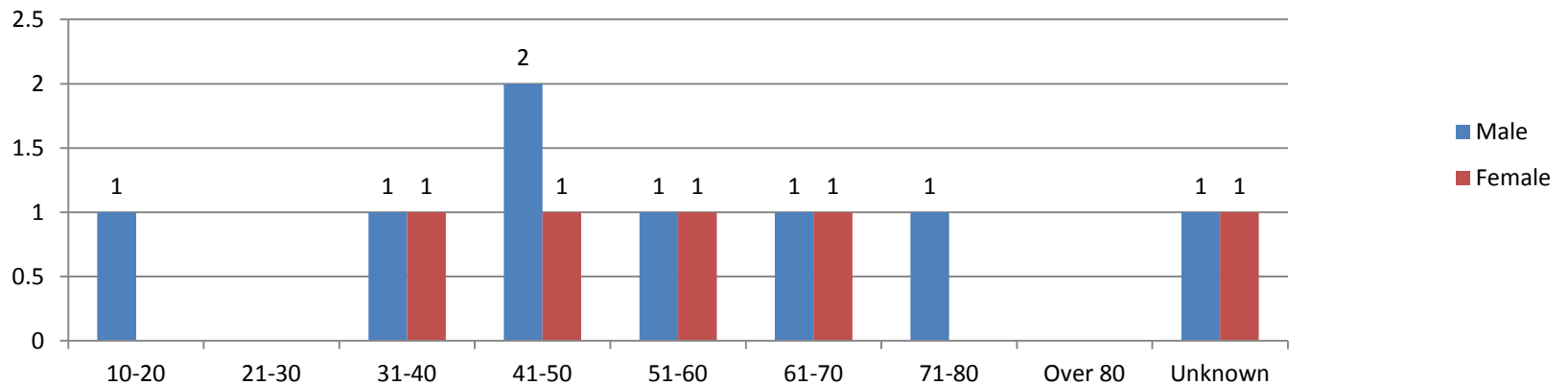


# Driver Characteristics

Males accounted for 62% of drivers involved in the reported vehicle/pedestrian collisions during the January - September 2014 period.

This is in contrast to the proportion of males of approximate driving age in HRM, which is nearly 48% according to the HRM 2011 census.

**Vehicle / Pedestrian Collisions  
January - September 2014  
Driver Age Brackets**



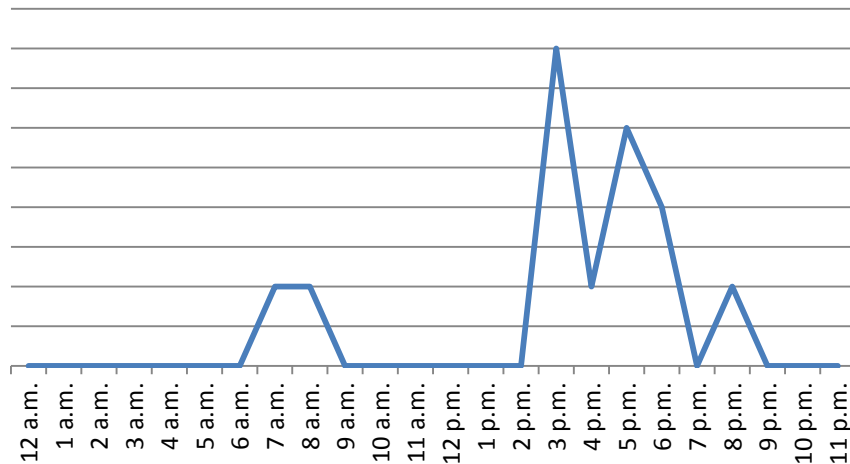
# Peak Collision Times

Reported vehicle/pedestrian collisions peaked during the 2 – 3 p.m. time period during January - September 2014, followed by the 5 – 6 p.m. time period.

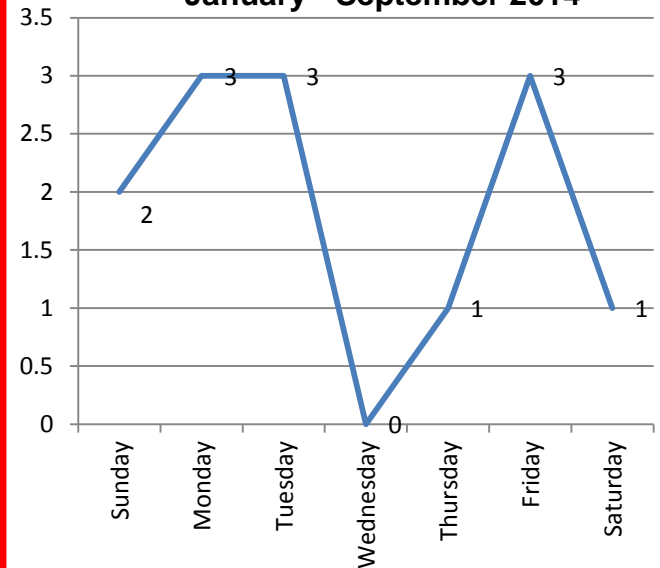
Weekdays were the most common days for vehicle/pedestrian collisions, with the exception of Wednesdays.

Note: Due to the small numbers, these trends cannot be deemed statistically significant.

**Time of Day  
January - September 2014**



**Day of Week  
January - September 2014**



# Weather & Lighting Conditions

100% of the reported vehicle/pedestrian collisions throughout this time period occurred during clear weather conditions.

77% of the collisions took place during daylight.

77% of the collisions took place during daylight with clear weather conditions.

