



Fig.1 (Revised) The Conserved Bank of Commerce Building with hotel plaza beyond.



Fig.2 (Revised) George Street facade of the conserved Bank of Commerce Building, south atrium and hotel plaza.

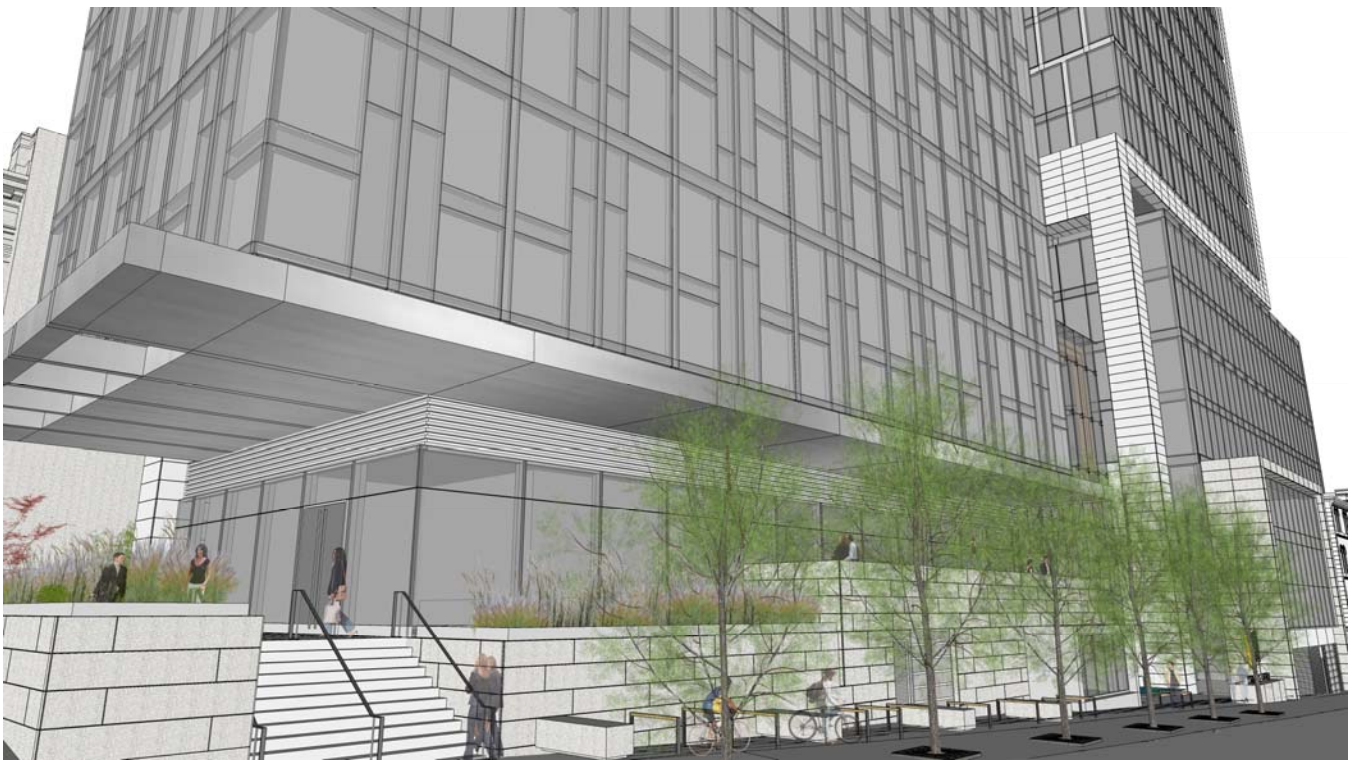


Fig.3 (Revised) Hollis Street facade of the hotel, hotel plaza, terraces and widened sidewalk.



Fig.4 (Revised) Hollis Street facade of the hotel and widened sidewalk.



Fig.5 (Revised) Hollis Street facade of the atrium and east plaza.

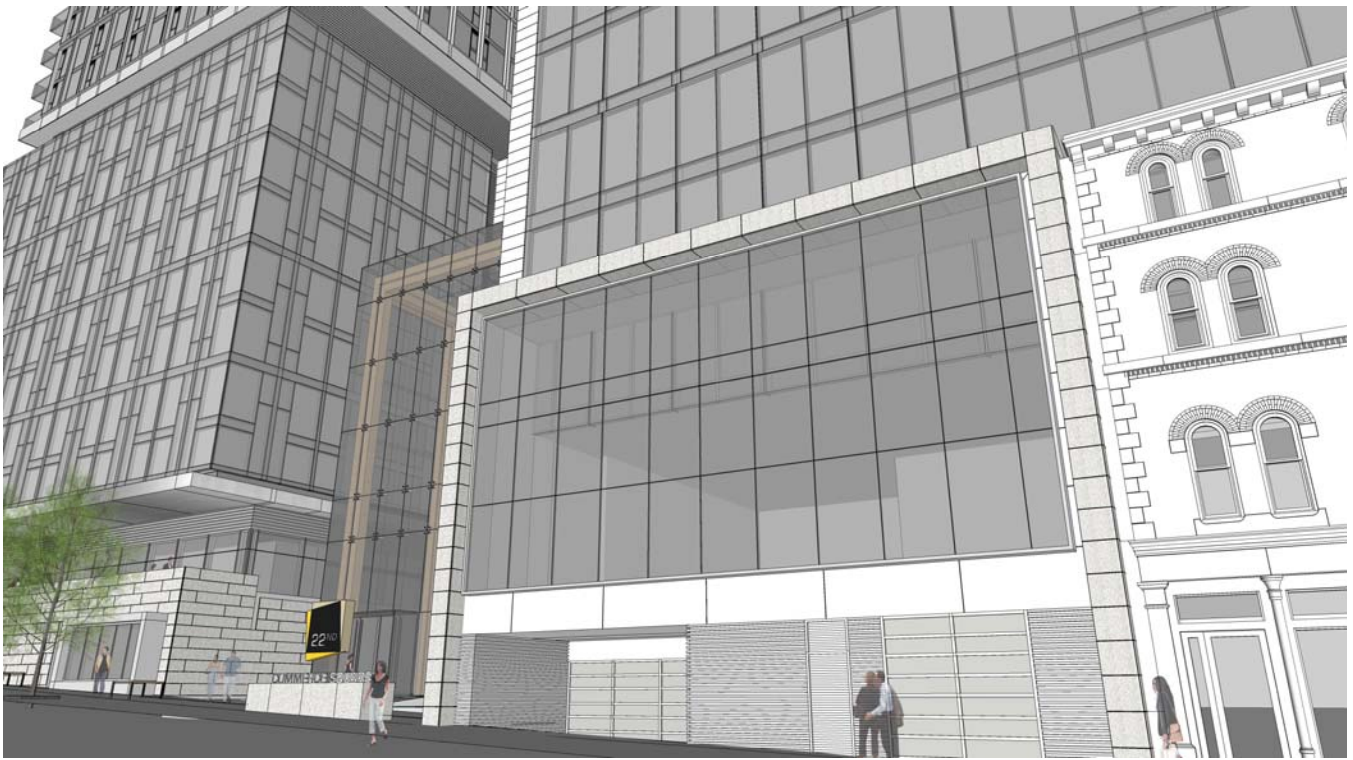


Fig.6 (Revised) The east plaza and car park entrance.



Fig.7 (Revised) The conserved Champlain and Flynn Buildings.



Fig.8 (Revised) The conserved Merchant Bank and Champlain Buildings, and the Duke Street Office Tower entrance.



Fig.9 (Revised) The conserved Merchant Bank and Hayes Insurance Buildings with new infill facades along Granville Street.



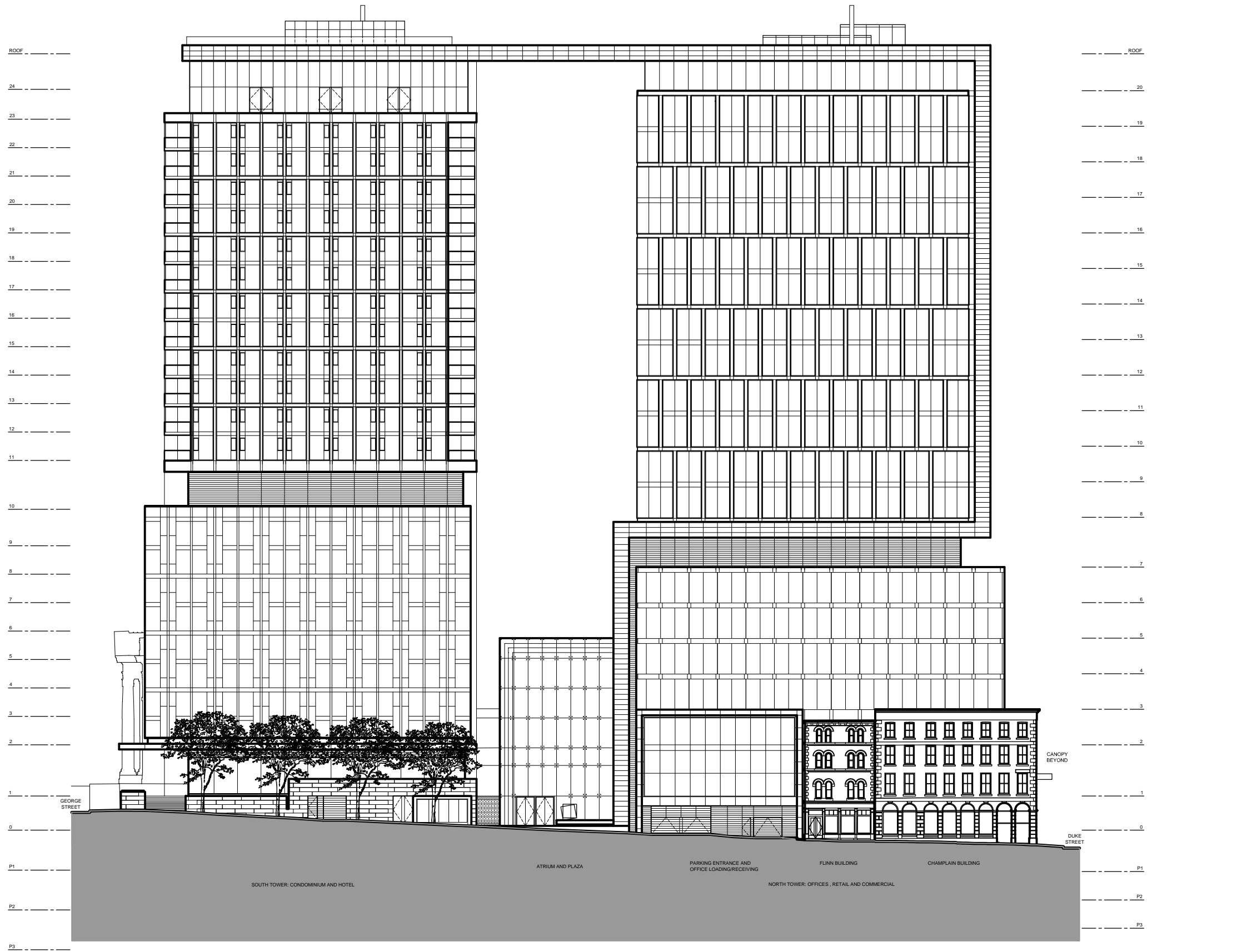
Fig.10 (Revised) The west plaza and condominium entrance.



Fig.11 (Revised) The west plaza and condominium entrance.



Fig.12 View west along George Street of south and east facing facades.



EAST ELEVATION

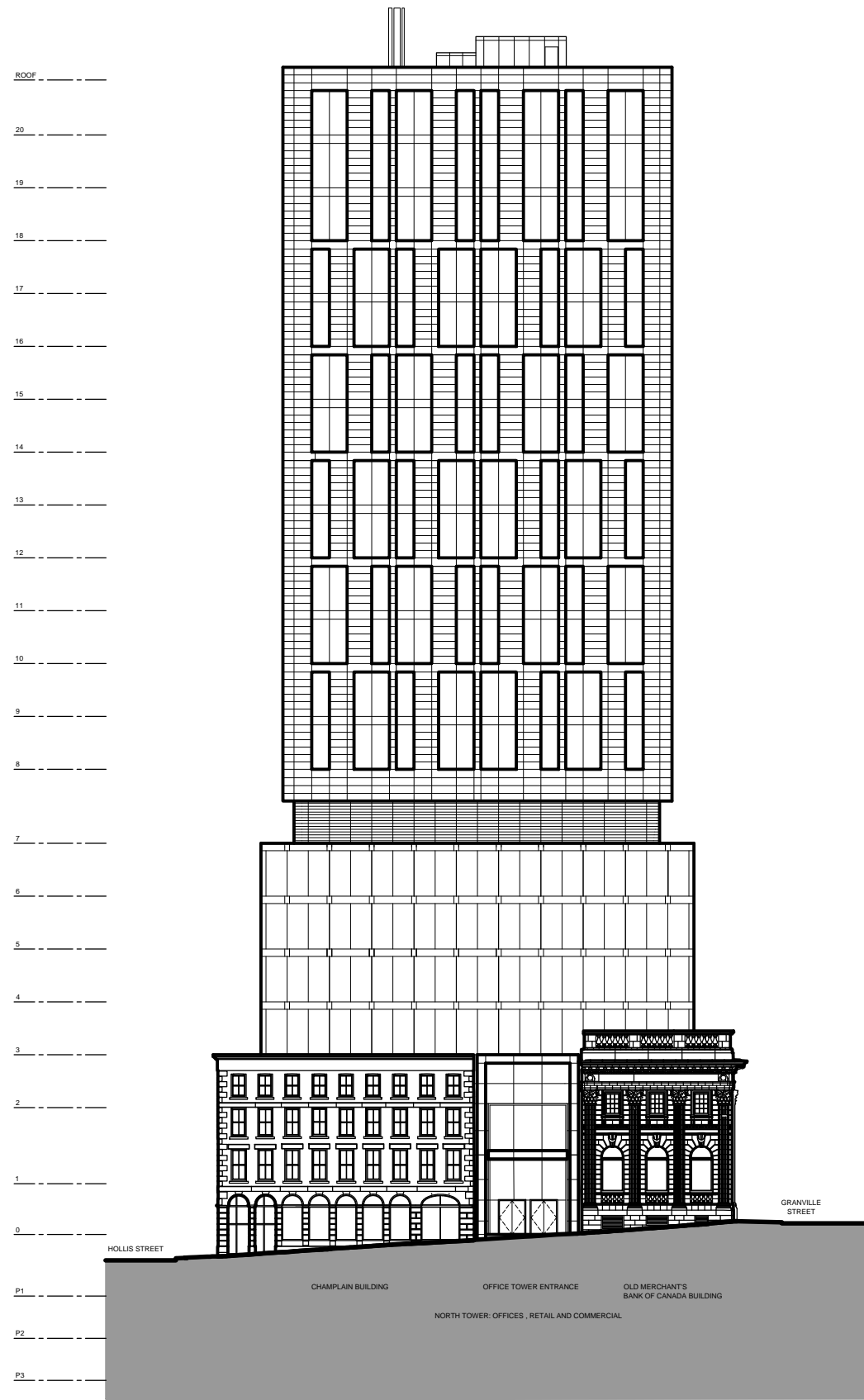
LYDON LYNCH

ROBIN HALIFAX HOLDING LTD

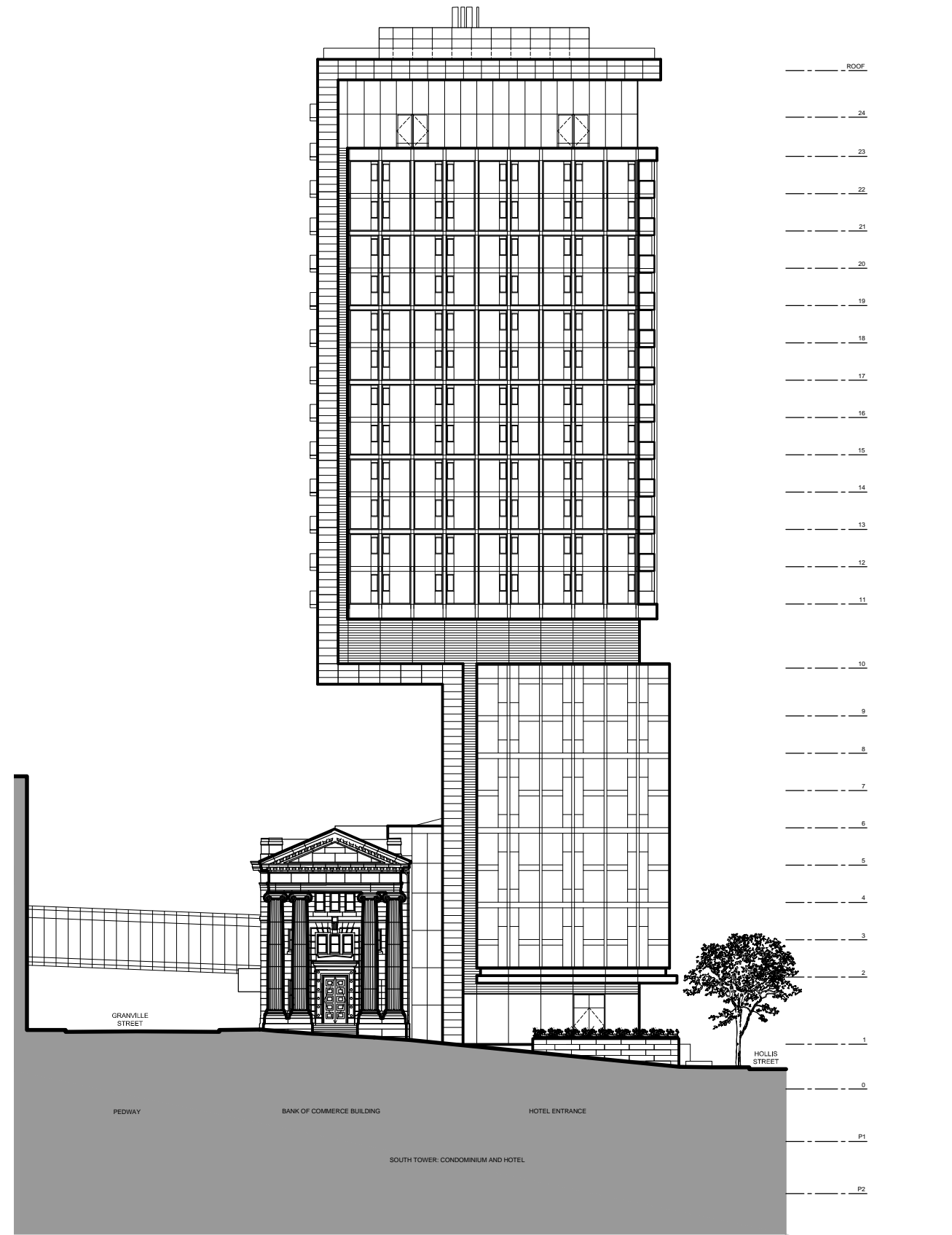
22nd COMMERCE SQUARE

HRM SITE PLAN APPROVAL APPLICATION (REVISED)

FEBRUARY 12, 2014



NORTH ELEVATION



SOUTH ELEVATION

LYDON LYNCH

ROBIN HALIFAX HOLDING LTD

22nd COMMERCE SQUARE

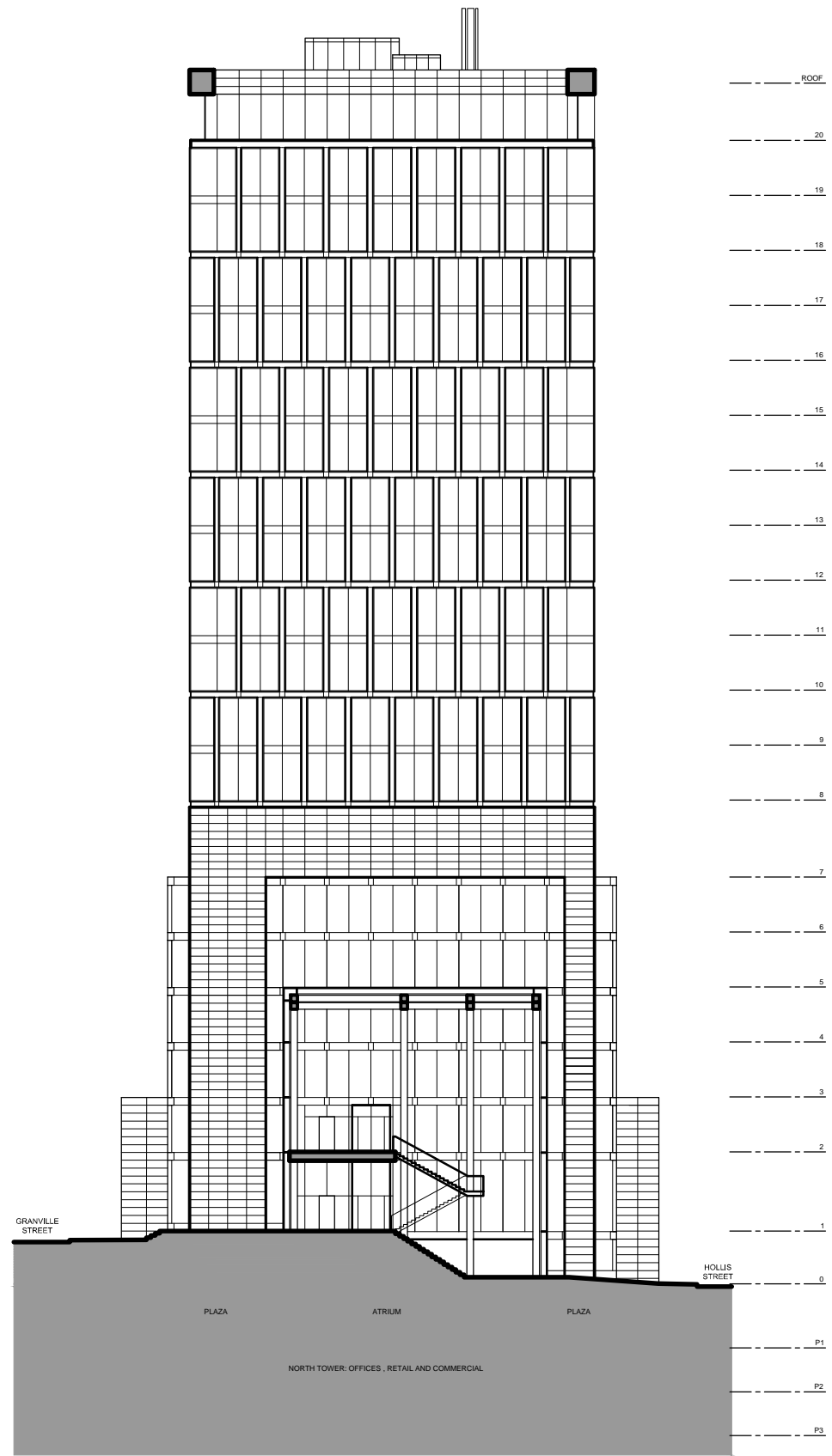
HRM SITE PLAN APPROVAL APPLICATION (REVISED)
FEBRUARY 12, 2014



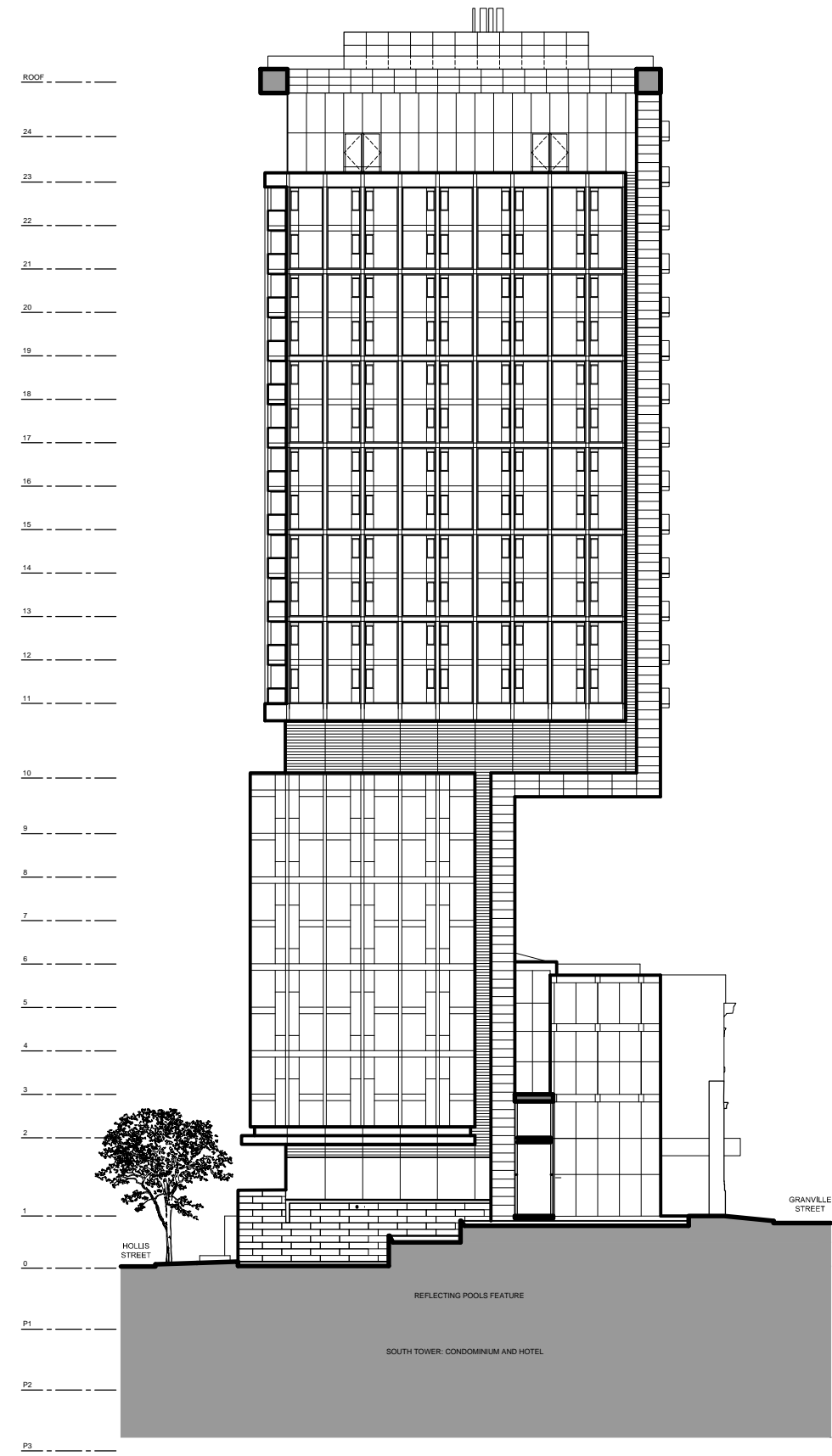
WEST ELEVATION

LYDON LYNCH
ROBIN HALIFAX HOLDING LTD

22nd COMMERCE SQUARE
HRM SITE PLAN APPROVAL APPLICATION (REVISED)
FEBRUARY 12, 2014

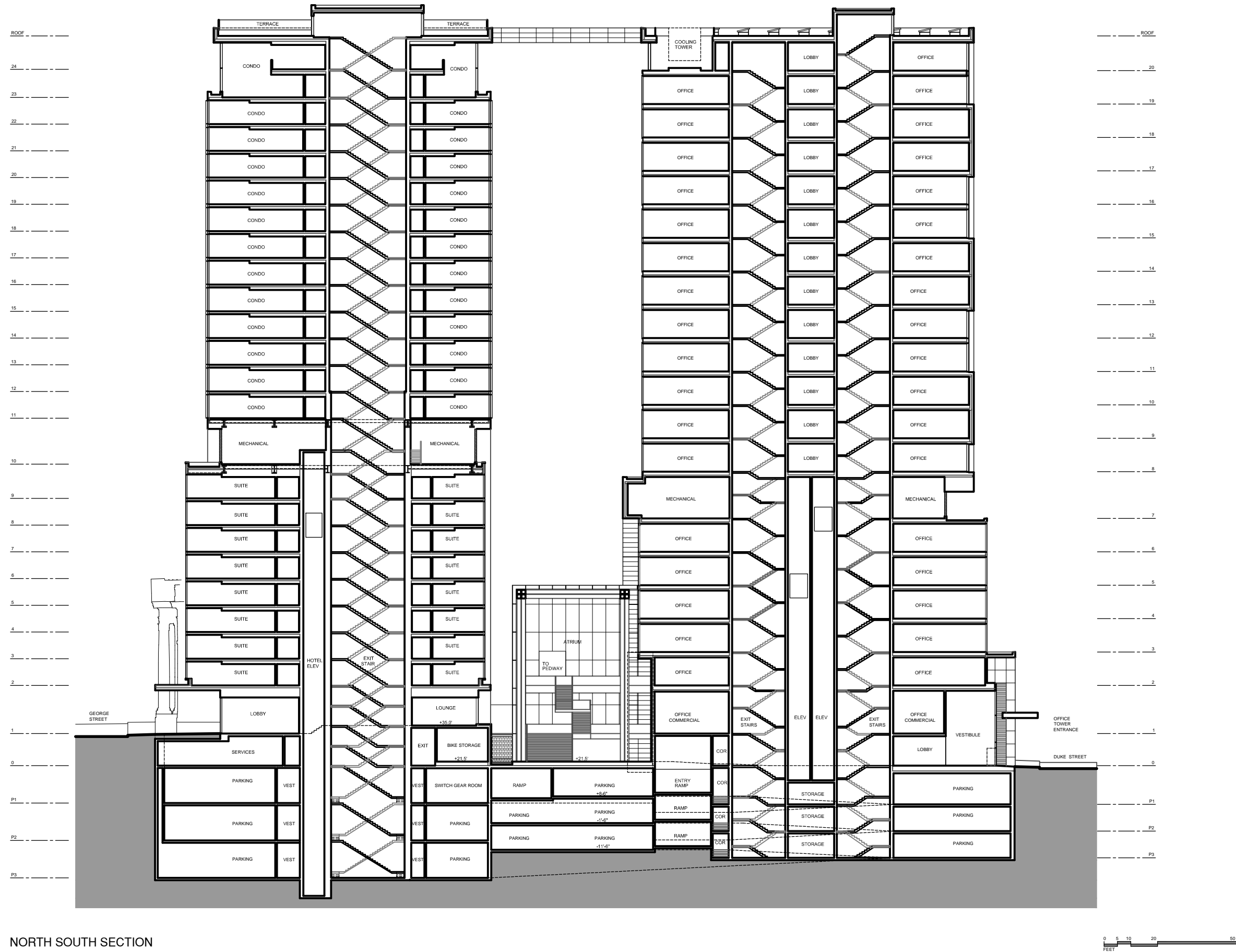


SOUTH ELEVATION AT ATRIUM

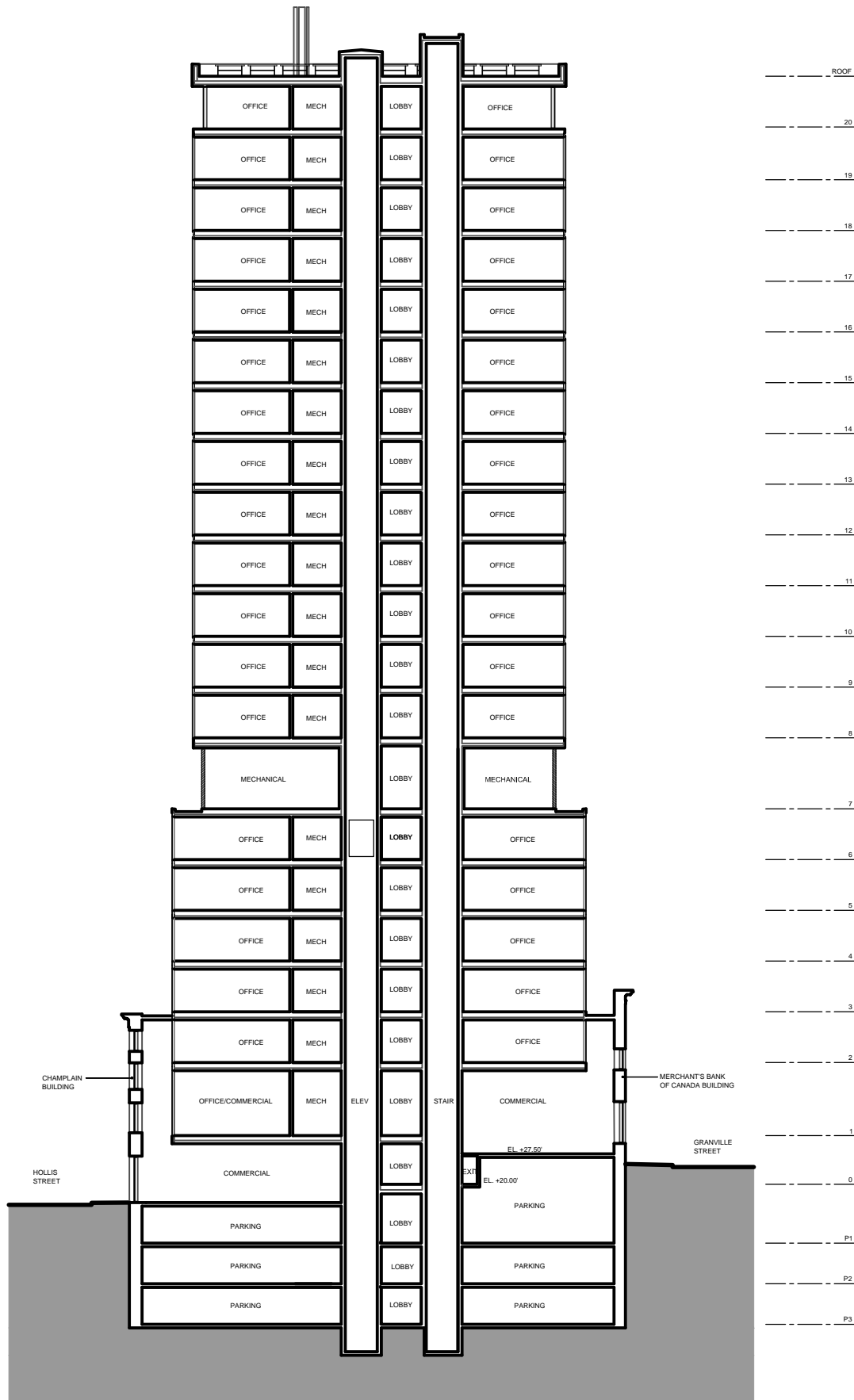


NORTH ELEVATION AT ATRIUM

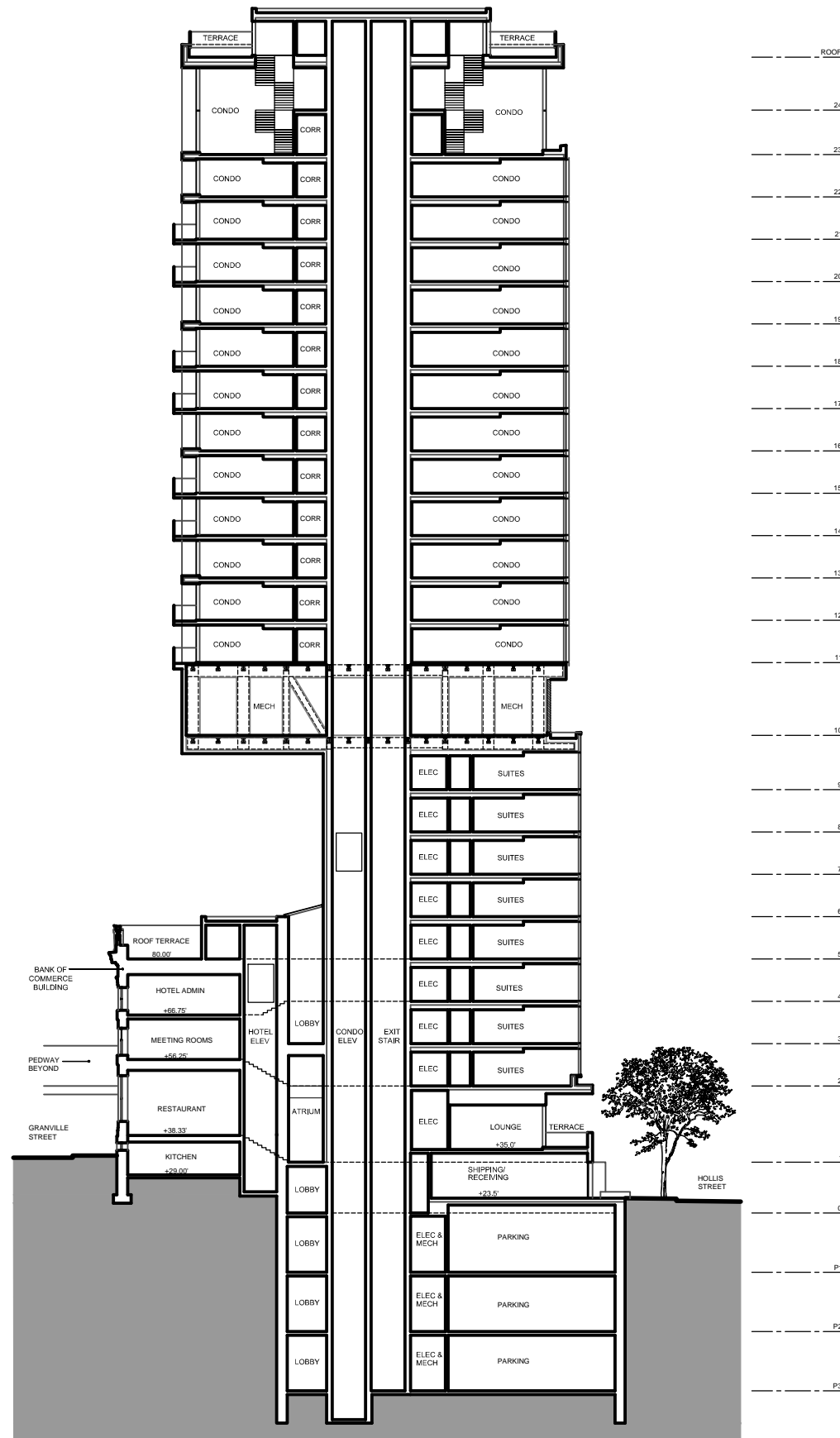




NORTH SOUTH SECTION



SECTION THROUGH OFFICE TOWER



SECTION THROUGH CONDOMINIUM & HOTEL TOWER

