



RP+5
Regional Plan 5 Year Review

Regional Plan Five-Year Review

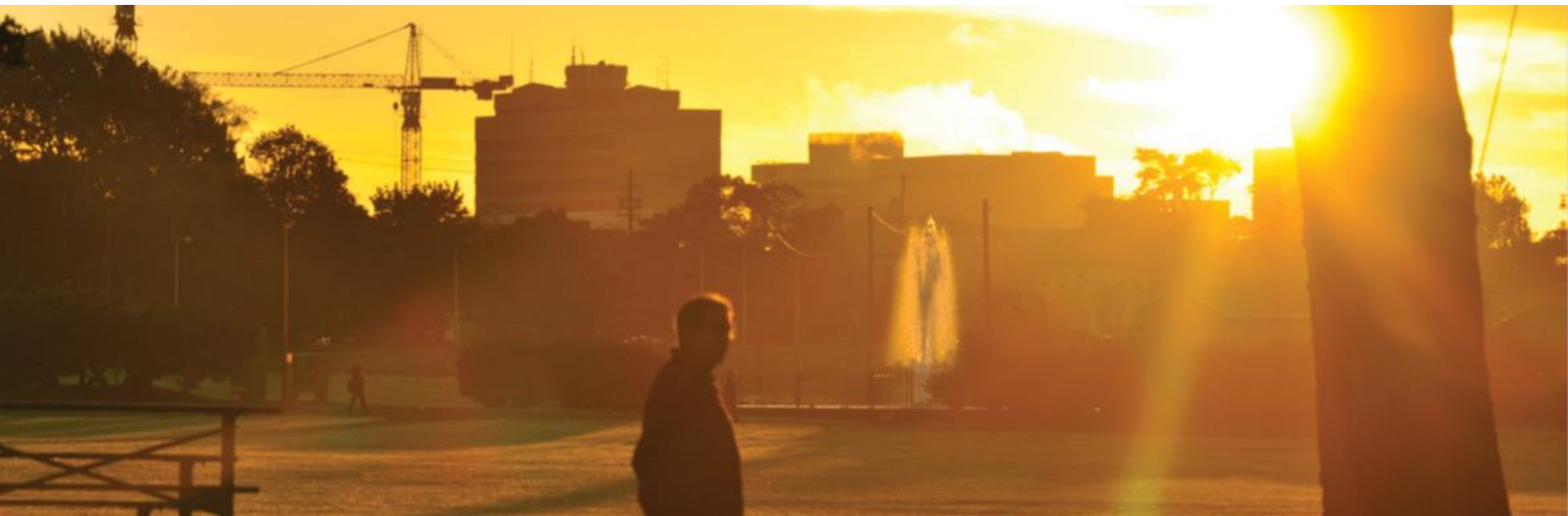
Approved by Regional Council:

June 25, 2014



Regional Plan Vision

Enhance our quality of life by fostering the growth of healthy and vibrant communities, a strong and diverse economy, and sustainable environment.



7 Guiding Principles

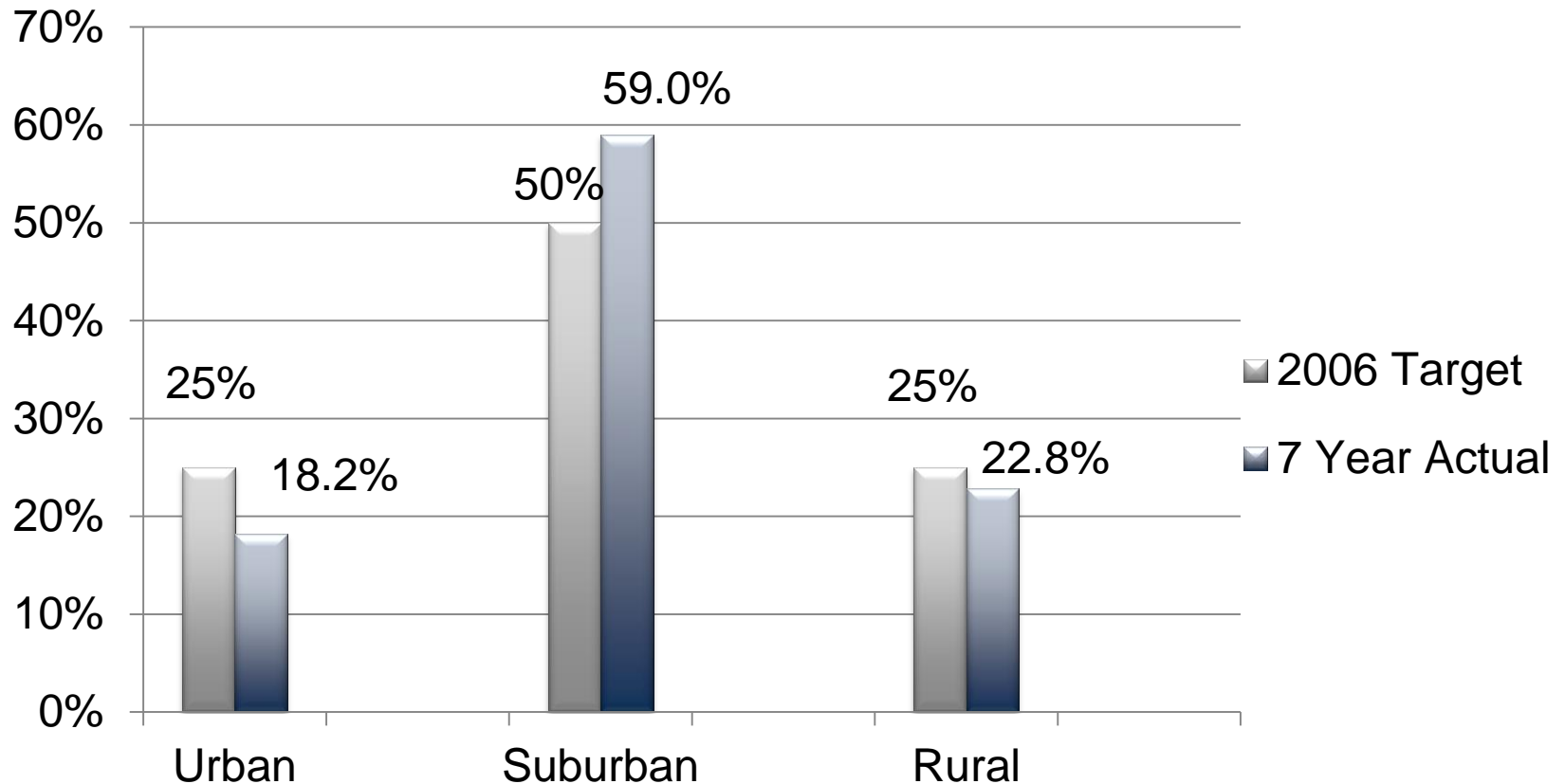
- predictable, fair, cost-effective and timely decision-making
- development patterns that promote a vigorous regional economy
- sustainability of cultural historical and natural assets
- Regional Centre as the focus of economic, cultural and residential activities
- make the most effective use of land, energy, infrastructure, public services, and foster healthy lifestyles
- protection of open space, wilderness, natural beauty and sensitive environmental areas
- integrated transportation systems in conjunction with

First 5-year Review (RP+5)

- Legislative requirement
 - HRM Charter (s. 229.2)
 - Regional Plan Policy (Policy IM-7)
- Evaluate effectiveness of the Plan
- Address changing conditions and new opportunities based on scope approved by Council

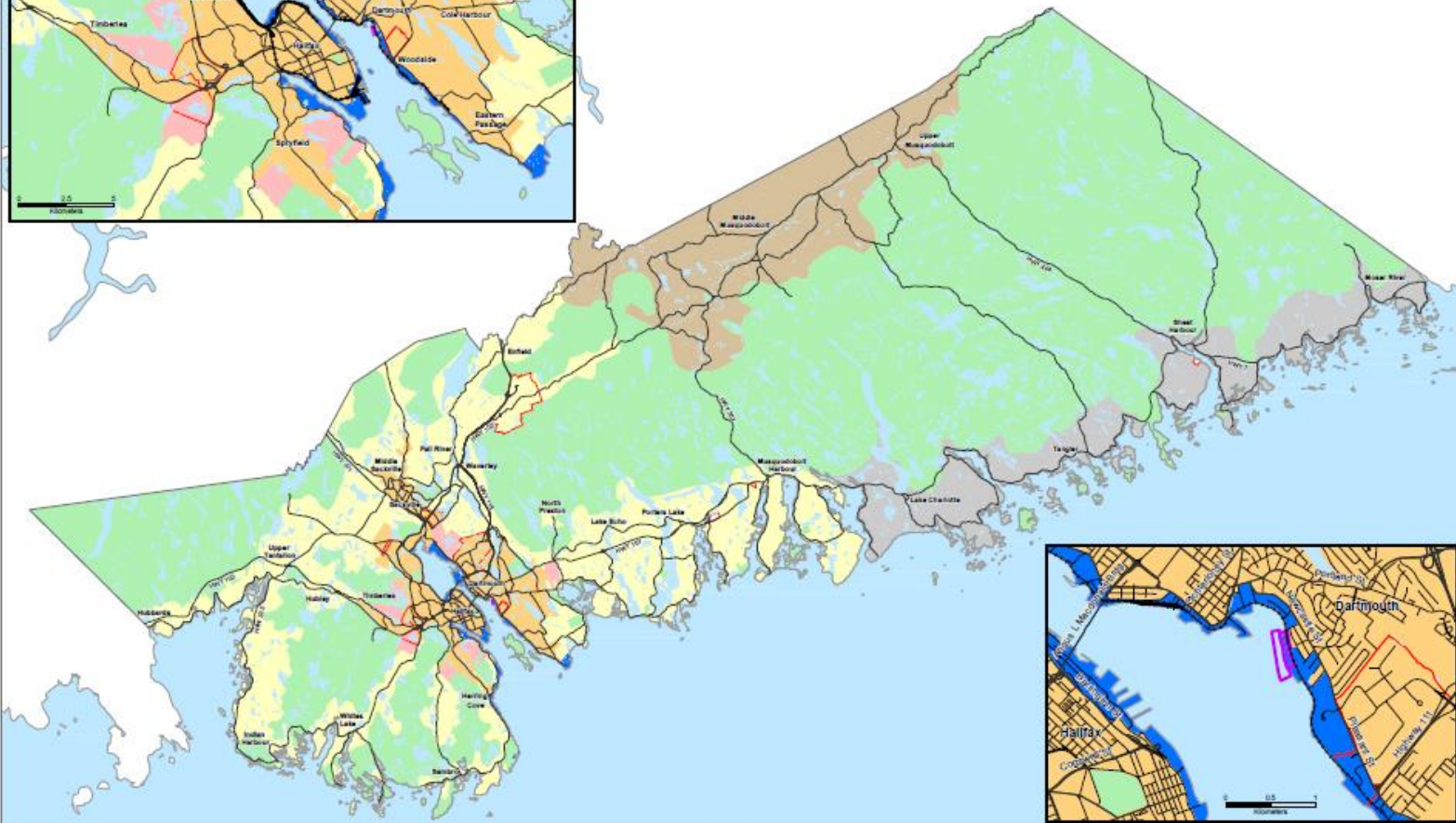
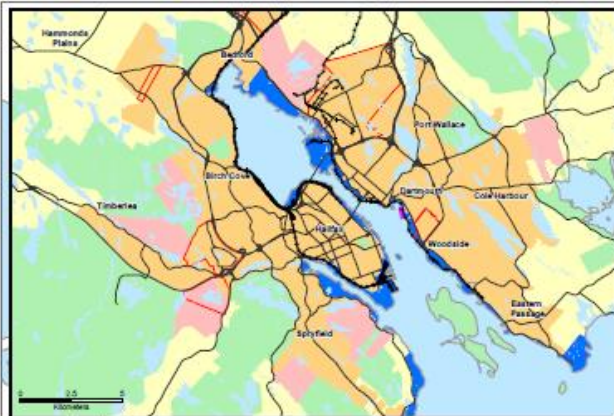


Trend in Growth Targets



Source: CMHC, 2006-2013 New Housing Starts

What is not changing - Foundation



Map 2

Draft RP+5

Generalized Future
Land Use

Legend

Primary Designations

- | | |
|---|---------------------------------|
|  | Urban Settlement |
|  | Urban Reserve |
|  | Halifax Harbour |
|  | Rural Commuter |
|  | Rural Resource |
|  | Open Space and Natural Resource |
|  | Agricultural |

Secondary Designations

- ☐ Business / Industrial Park
- ☐ Harbour Industrial



HALIFAX
REGIONAL MUNICIPALITY

The following is a graphical representation and although care has been taken to ensure the best possible quality, HRM does not guarantee the accuracy of this document.

Notes: This map demonstrates a vision to be implemented over the life of the Regional Plan, through various tools, subject to financial ability and community interest.

8 May 2010	Effective: 26 August 2008
Amended: 20 March 2009	Adopted: 27 June 2008

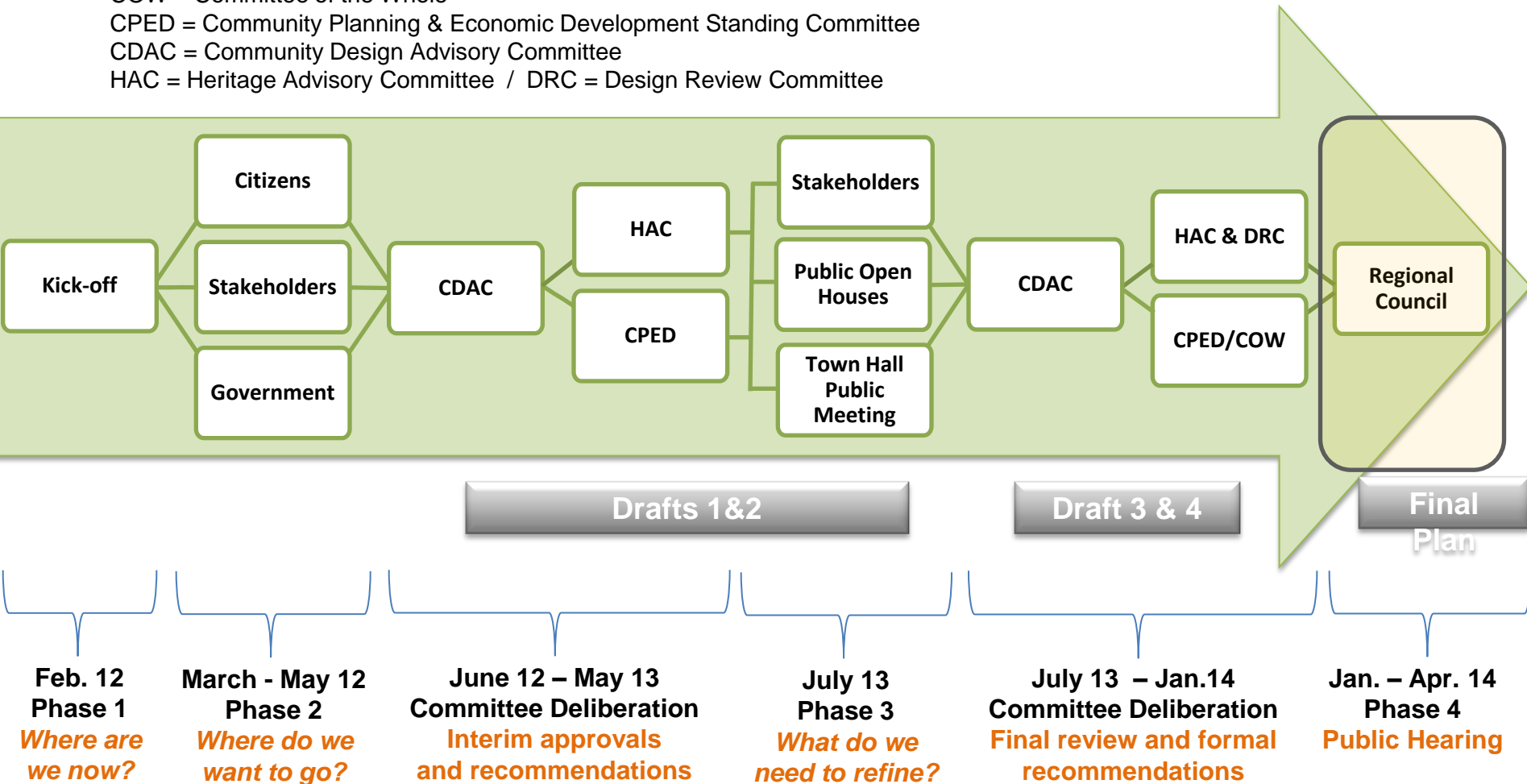
RP+5 Process

COW = Committee of the Whole

CPED = Community Planning & Economic Development Standing Committee

CDAC = Community Design Advisory Committee

HAC = Heritage Advisory Committee / DRC = Design Review Committee



RP+5 Proposed Changes

Sustainable Solutions

Enhanced Regional Centre

Improved Community Design

Mutually Supportive Land Use
and Transit/AT

1. Sustainable Solutions



Sustainable Solutions

Manage growth sustainably

- Commitment to undertake Greenbelting and Public Open Spaces Priorities Plan
- restated growth targets are criterion for initiating secondary planning
- Revised policies for rural growth to encourage growth in defined rural growth centres but place limitations on growth outside of centres

Sustainable Solutions

Greenbelting & Public Open Space Plan

Landscape ecology approach:



Scattered: the patchwork



Linear: the ribbon



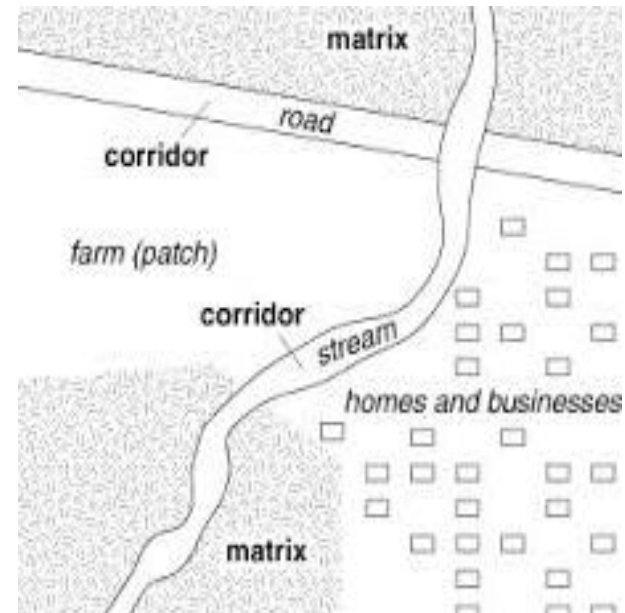
Linear: the network



Area: the belt



Area: the wedge



Sustainable Solutions

Protect water, land and air

- Protect potable water supply areas
 - New policy provisions to amend land use by-laws to better protect public water supply sources
 - Requirements for ground water assessments for rural developments where 10 or more dwellings proposed
- Provisions to adopt tree protection by-law and improved provisions to protect trees within riparian buffers while allowing flexibility across HRM
- Improve management of storm water and erosion
- Consider food security through secondary planning

Sustainable Solutions

Protect water, land and air

- Urban Forest Management Plan, Climate Risk Management Strategy, Community Energy Plan, Corporate Plan to Reduce Energy identified for guiding priorities, work plans and budgets

Sustainable Solutions

Preserve and Enhance Culture & Heritage Resources

- Standards & Guidelines for the Conservation of Historic Places in Canada adopted for guidance of Heritage Property By-law,
- Assist communities in identifying and celebrating cultural and heritage assets
- Identify and preserve cultural landscapes
- Recognize the importance of arts to the creative economy and vitality of our region
- Policy commitment made to undertake Culture and Heritage Priorities Plan

2. Enhanced Regional Centre



Enhanced Regional Centre

Attract Residents and Investment

- Vision statement and principles endorsed by Council through HalifaxbyDesign process incorporated into plan and policy commitment made to prepare a Regional Centre Plan in accordance with these.
- Develop heritage plans and programs to preserve and enhance heritage properties, streetscapes, and districts
- Prepare capital and operating expenditure programs that enhance development
- Create financial and regulatory incentives to

Enhanced Regional Centre

Attract Residents and Investment

- Recommendations of the Strategic Urban Partnership and the Greater 2011 to 2016 Economic Strategy are to be considered when preparing capital and operating expenditure programs that enhance development
- Create financial and regulatory incentives to stimulate desired growth

3. Improved Community Design



Improved Community Design

Suburban Communities

- Focus new growth in centres where services and infrastructure exist
- Advance complete communities for all areas
- Promote environmentally sustainable transportation modes
- Ensure that there are sufficient lands available along the harbour and in business parks to provide economic opportunities
- Support and enhance land, port and air transportation facilities
- Reduce above grade electrical and telecommunication transmission lines

Improved Community Design

Urban Communities

- Design communities that:
 - a) are attractive, healthy places to live and have access to the goods, services and facilities needed by residents
 - b) are accessible to all mobility needs and are well connected with other communities
 - c) protect neighbourhood stability and support neighbourhood revitalization
 - d) preserve significant environmental and cultural features
 - e) promote community food security
 - f) provide housing opportunities for a range of social and economic needs and promote aging in place

Improved Community Design

- Balance property rights, lifestyle choices, fiscal and environmental responsibility
- Encourage new growth in centres where supporting services and infrastructure are available
- Natural corridors must first be delineating when planning for new developments
- Secondary planning strategies must consider mobility needs, food security, affordable housing

4. Land use and transit/active transportation are mutually supportive



Land Use and Transportation

Integrated and Sustainable

- Establish Urban Transit Service Boundary
- Require Transit Oriented Development
- Provide rural transit community support
- Protect greenways connections in secondary planning
- Design complete streets for all ages, abilities, and modes of travel
- Road Network Priorities Plan to be prepared in consultation with the community