

An aerial photograph of a city, likely Hartford, Connecticut, showing a large blue lake (Lake Connecticut) in the center. The city is densely packed with buildings and houses, interspersed with green trees. In the foreground, there is a large, lush green forested area. The sky is clear and blue.

Sustaining HRM's Urban Forest

Draft UFMP Status Update

Environment & Sustainability Standing Committee

August 2, 2012

Overview

- **Plan development timeline**
- **The draft plan**
- **Public engagement**
 - **May, June workshops**
 - **Online survey**
- **What we heard**
 - **Theme 1-the public realm**
 - **Theme 2-the private realm**
 - **Theme 3-regulations & by-laws**
- **Next steps**



Process of plan development

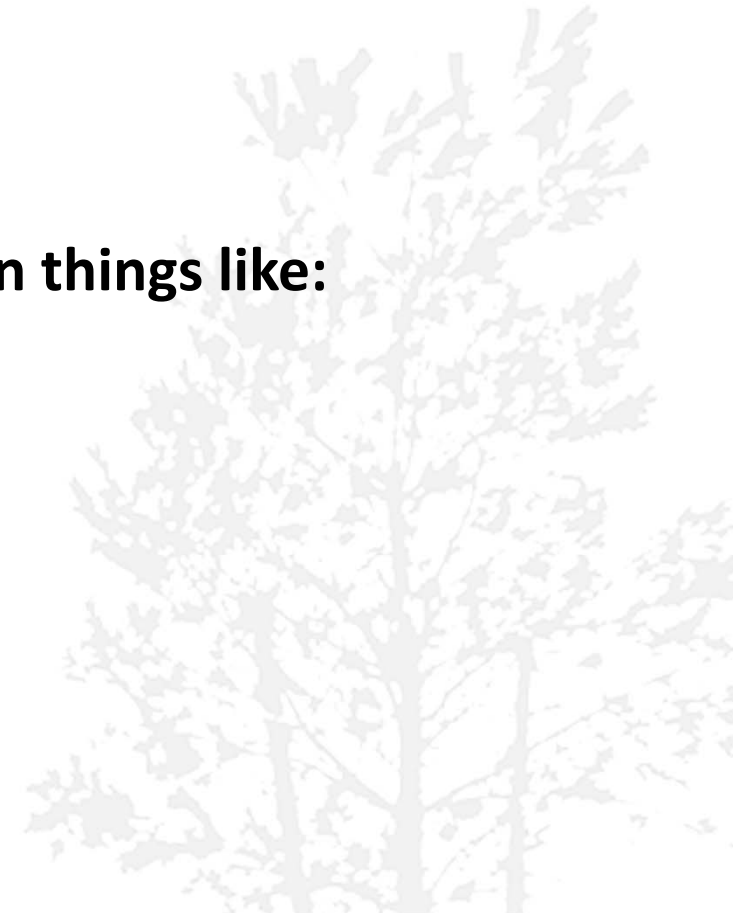
- **Inventory – 2007-10**
- **Early public engagement – 2010 – values**
- **Analysis and writing – 2011**
- **Second-round engagement – 2011-12**
- **Revisions – winter 2012**
- **Third-round engagement – May–July 2012**
- **Implementation strategy- UFMP Chapter 7 - Aug. 2012**
- **Report to ESSC-Sept. 2012**
- **Report to Regional Council-Oct. 2012**



Fact: people of HRM say that trees in the city are very important to them.

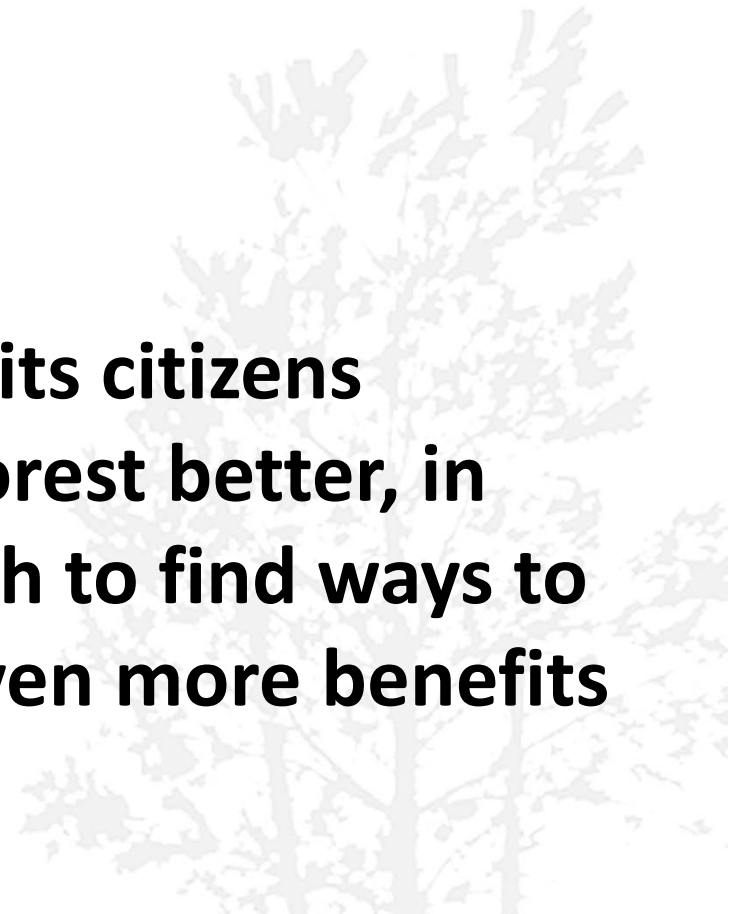
How are trees important to people?

- **Arboricultural view – things like:**
 - Shade (energy savings, pavement longevity)
 - Stormwater control
 - Air purification
 - Carbon storage
- **Broader professional view – add in things like:**
 - Biodiversity conservation
 - Sense of well-being
- **Citizens' view – add in things like:**
 - Aesthetics
 - Sense of identity and place



Why have an urban forest master plan?

- **To guide the city's decision-making about trees in the city:**
 - **On the city's land**
 - **On other people's land**
- **To help both the city and its citizens understand their urban forest better, in hopes of encouraging both to find ways to improve it and capture even more benefits from it over time**



City decision-making . . .

- **On city land:**
 - **Planting** – how many trees, which kinds, where
 - **Maintaining** – how, how often
 - **Conflicts with infrastructure** – power lines, new construction
- **On other people's land:**
 - **Stewardship** – advice, assistance, incentives,
 - **Control** – regulations for removal, retention, replacement

Guiding Principles of UFMP

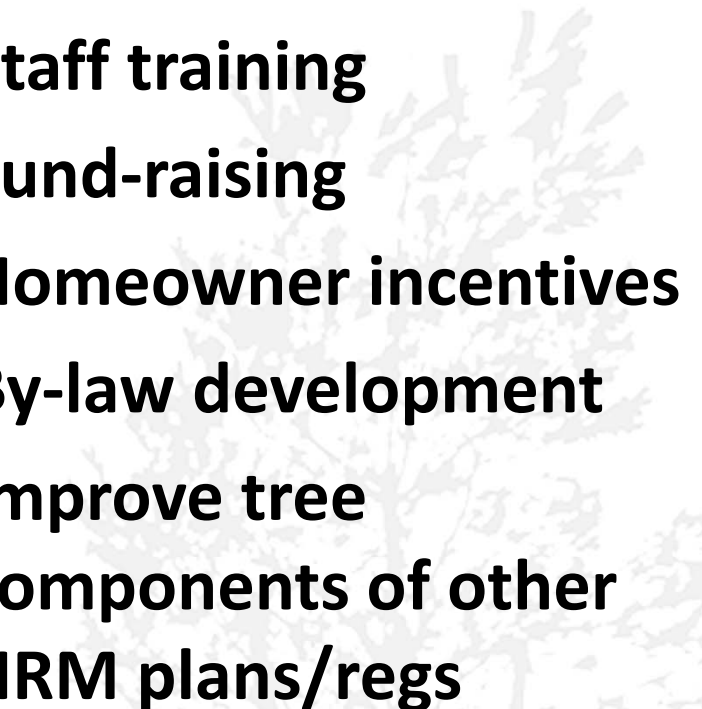
- **Adaptive Management**
- **Precaution**
- **Public Participation**
- **Sustainable Development**



Operational Principles

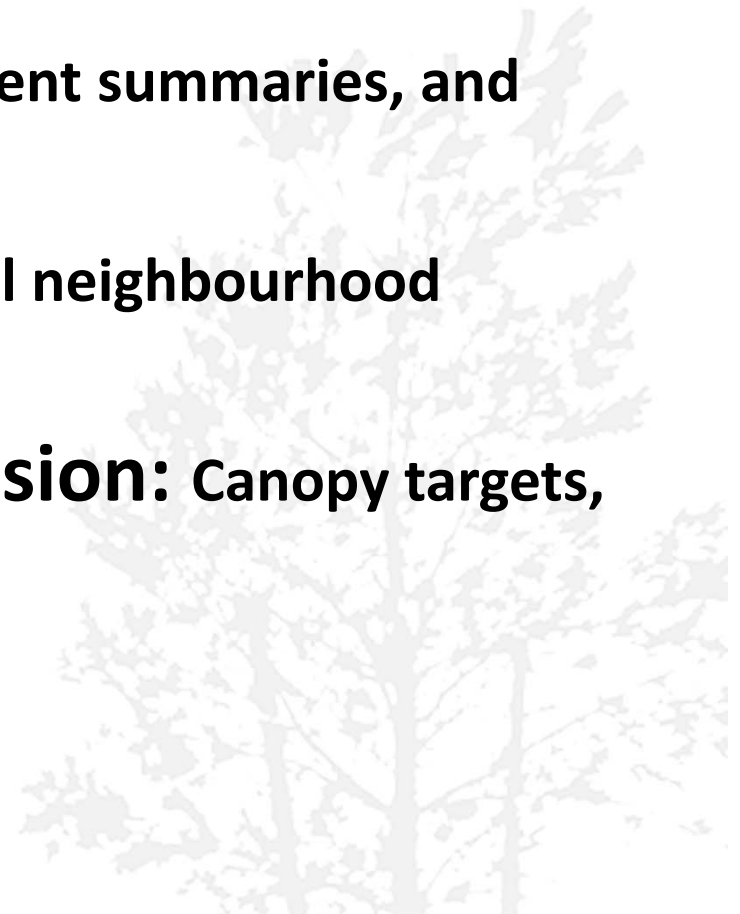
1. Comprehensive approach
2. Urban forest values
3. Space and location
4. Time and timing
5. Climate change
6. Naturalness
7. Invasive species
8. Public understanding
9. Stewardship
10. Priority-setting
11. Green infrastructure
12. Sense of identity
13. Cooperation and partnerships
14. Equity
15. Integrated planning

Actions needed (32 categories)

- **Plant trees
(neighbourhood treatments)**
 - **Maintain trees (7-yr
cycle)**
 - **Landowner/public
education/programming**
 - **Support citizen-led
stewardship initiatives**
 - **Research and
monitoring**
 - **Staff training**
 - **Fund-raising**
 - **Homeowner incentives**
 - **By-law development**
 - **Improve tree
components of other
HRM plans/regs**
- 

Four Levels of Urban-Forest Management

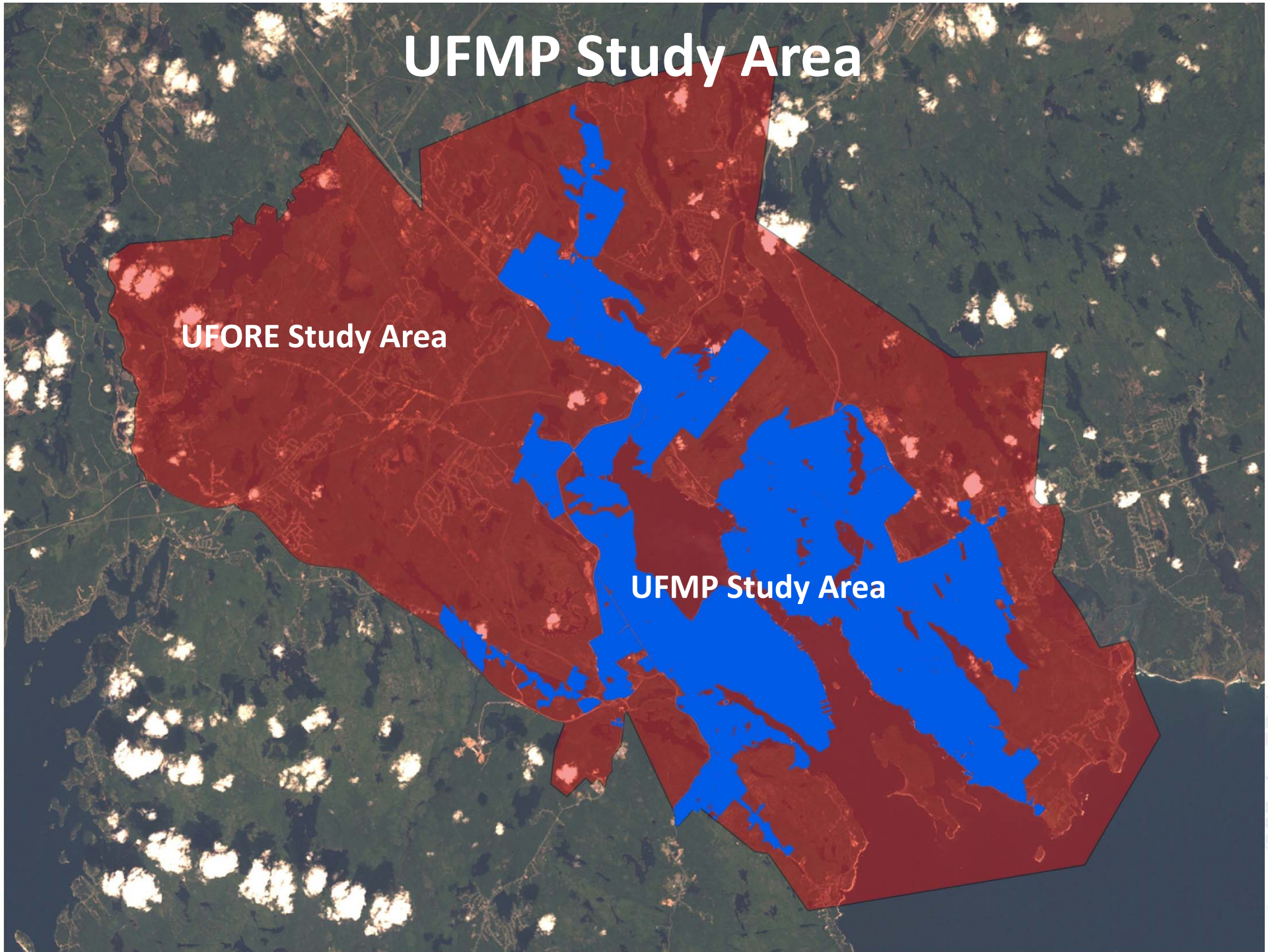
- ➔ **UFMP Study Area:** Ecological, economic, social values/objectives/indicators/targets, operational principles, and actions
- ↳ **Community:** Narrative, treatment summaries, and landscape patterns
- ↳ **Neighbourhood:** Technical neighbourhood treatments, canopy targets
- ↳ **Neighbourhood Division:** Canopy targets, prioritization, collaboration



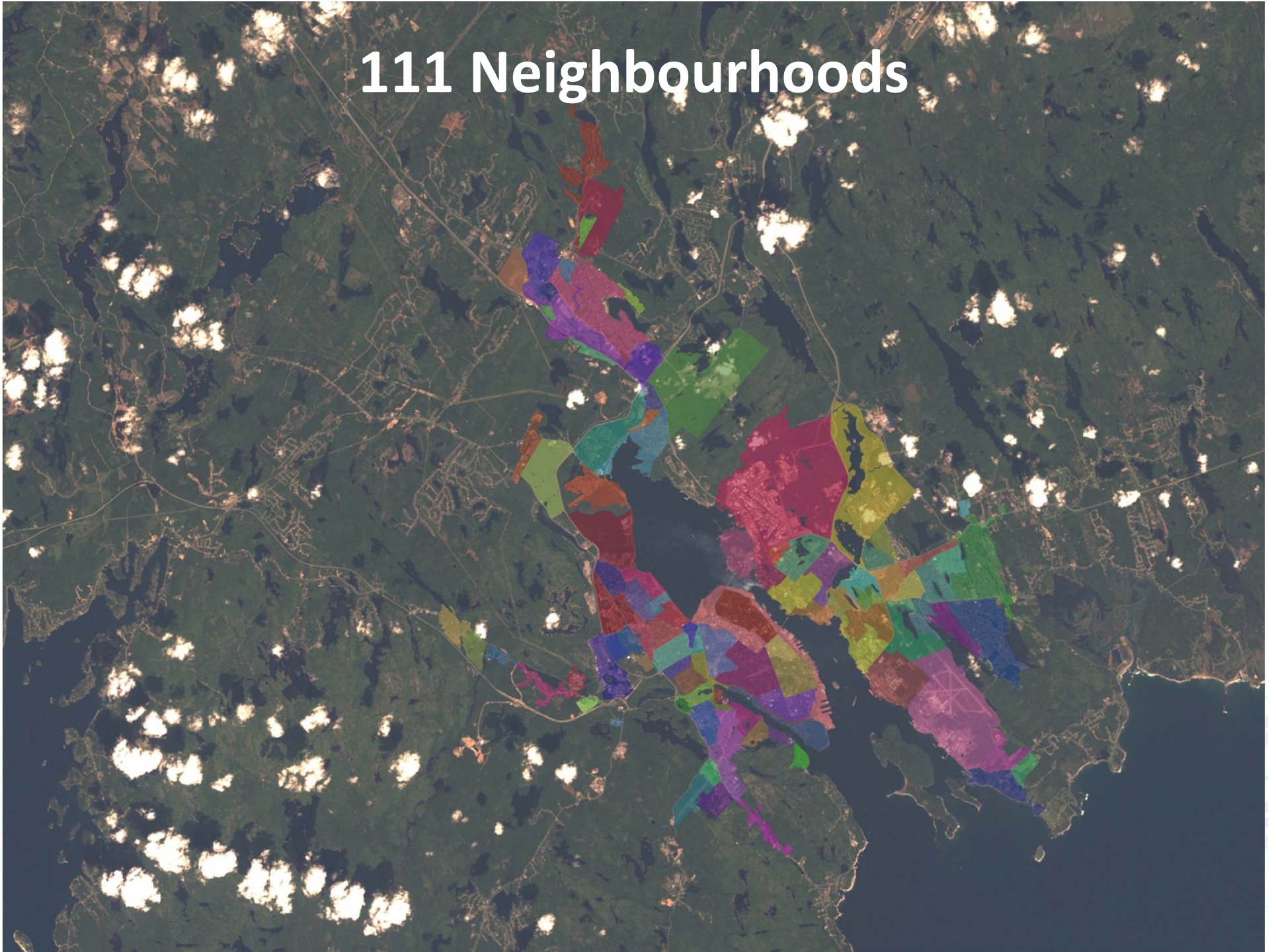
UFMP Study Area

UFORE Study Area

UFMP Study Area

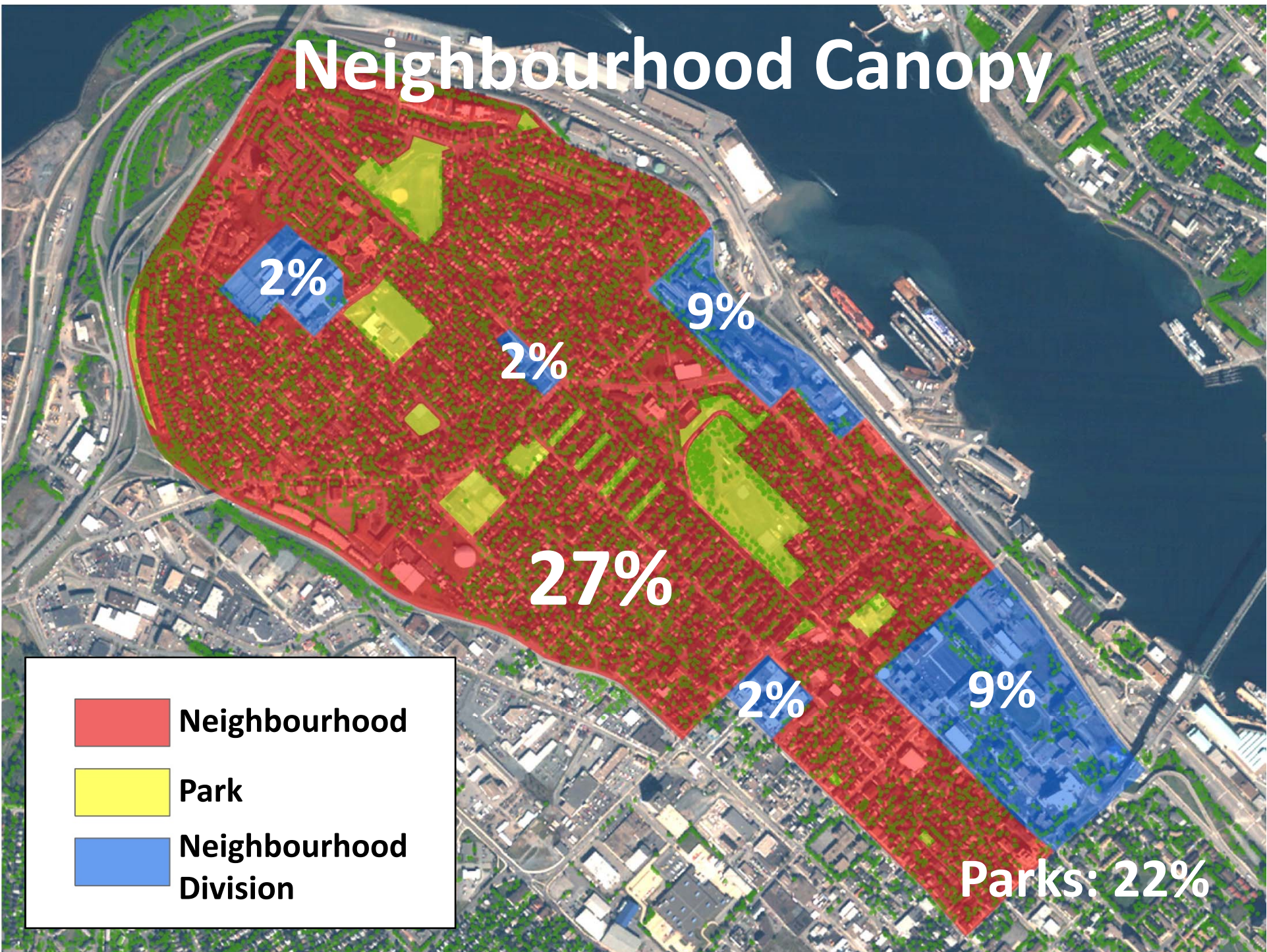




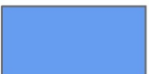
111 Neighbourhoods



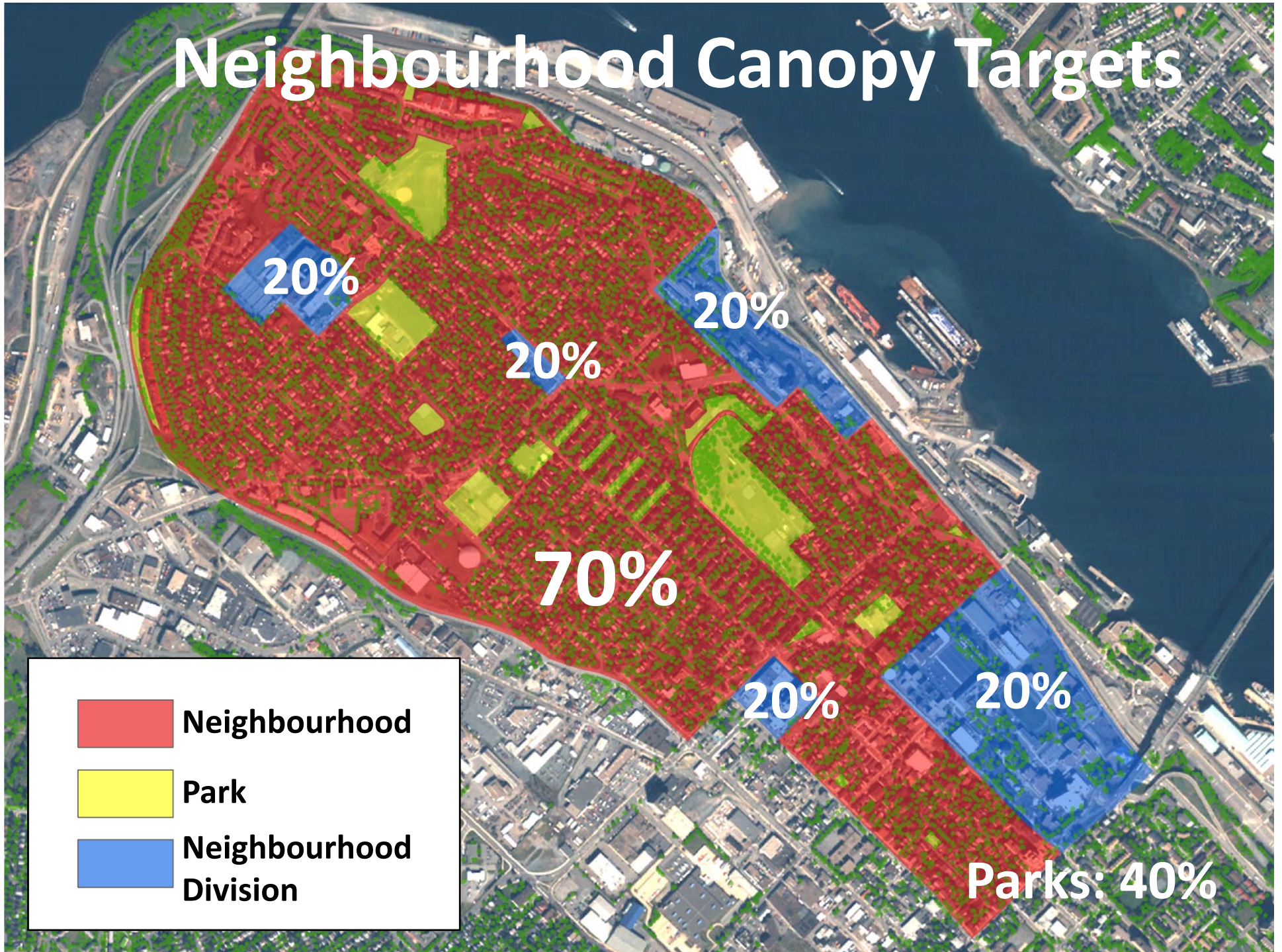


Neighbourhood Canopy

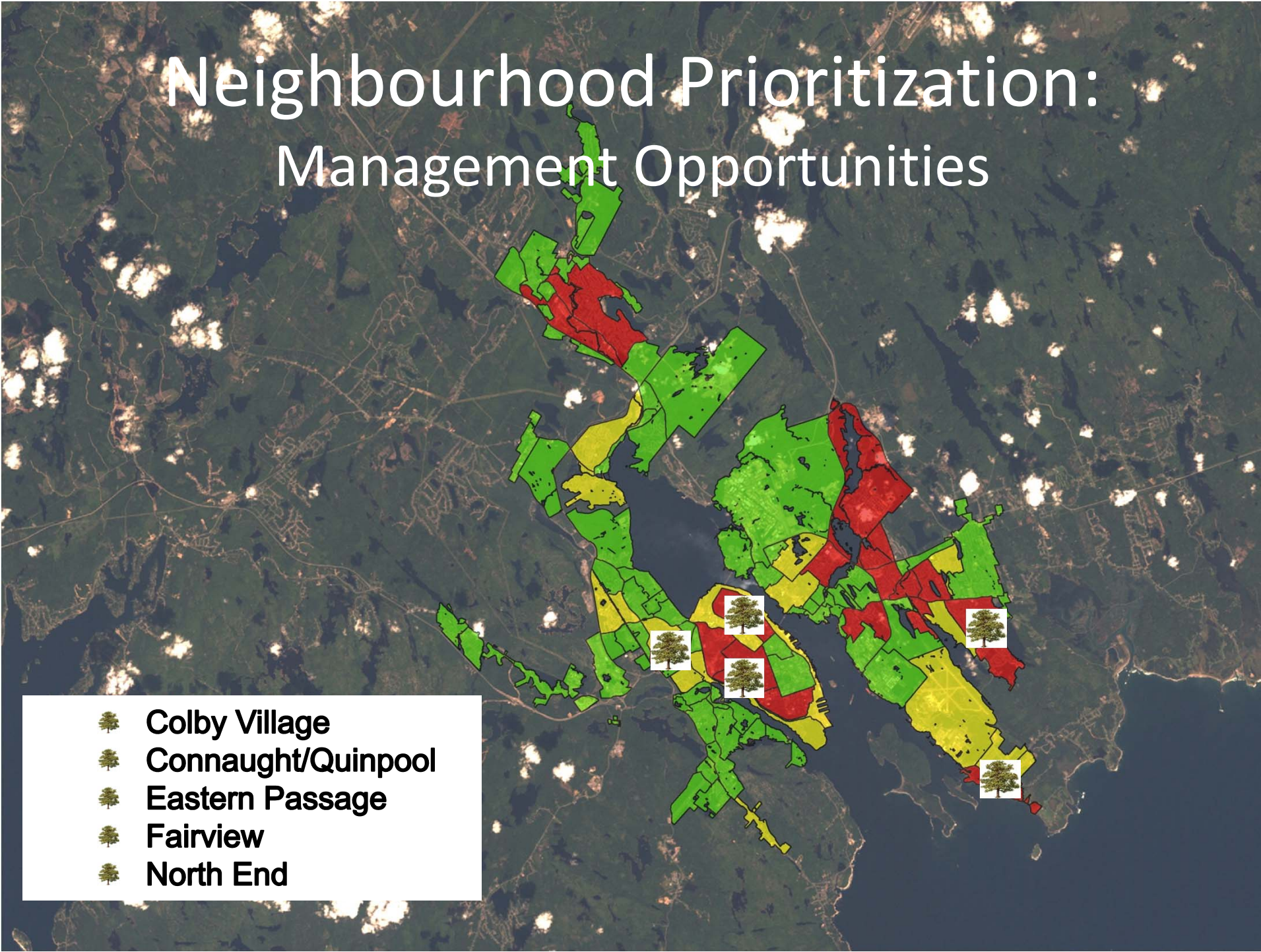


	Neighbourhood
	Park
	Neighbourhood Division

Neighbourhood Canopy Targets



Neighbourhood Prioritization: Management Opportunities

- 
- Colby Village
 - Connaught/Quinpool
 - Eastern Passage
 - Fairview
 - North End

Public Engagement

- Draft UFMP posted for public review in April, 2012
- Four public workshops in May/June: Dartmouth, Halifax, Sackville
- Online web survey in June/July
- Purpose: To help determine implementation priorities
- Results to provide direction for Chapter 7- Implementation Priorities
- Workshop reports and online survey reports now available at:
 - <http://www.halifax.ca/RealPropertyPlanning/UFMP/index.html>

What we heard

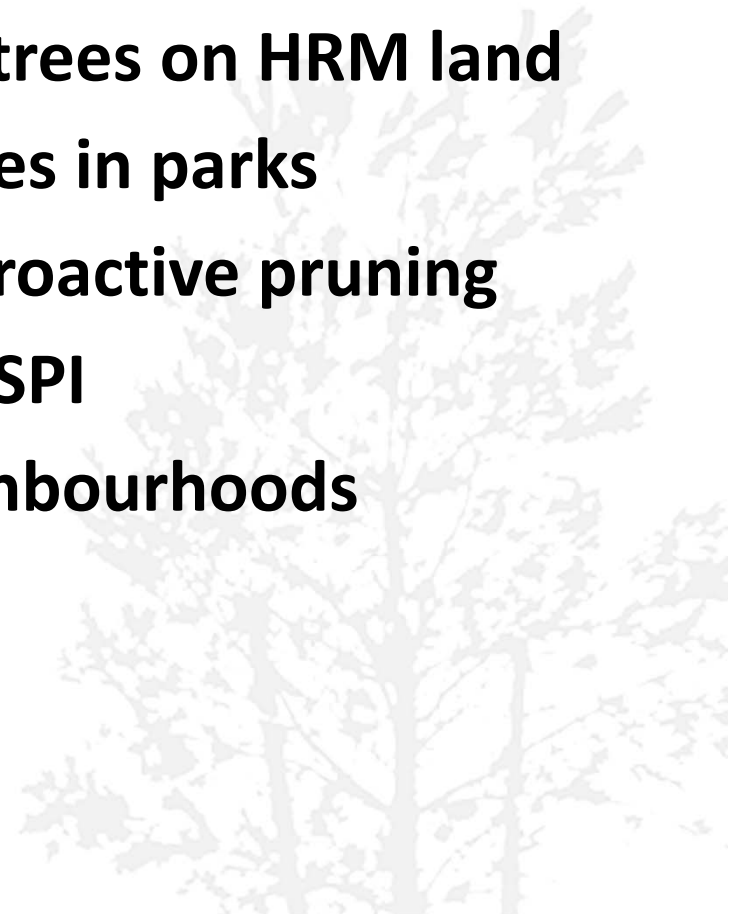


Priorities for Implementation: the really difficult part!

- **For physical treatments, where first?**
 - HRM land – streets vs. parks
 - Neighbourhoods – there are over a hundred!
- **For limited budget, what first?**
 - No action is without cost
 - Balance among:
 - Municipal land – planting and maintenance
 - Private land – stewardship and assistance
 - Policy – e.g., by-law development & implementation

Theme 1 – Public Realm

- **Priorities**
 - Increase funding/plant more trees on HRM land
 - Focus on street trees then trees in parks
 - Improve maintenance/start proactive pruning
 - Work cooperatively with NSPI
 - Start with prioritized UF Neighbourhoods

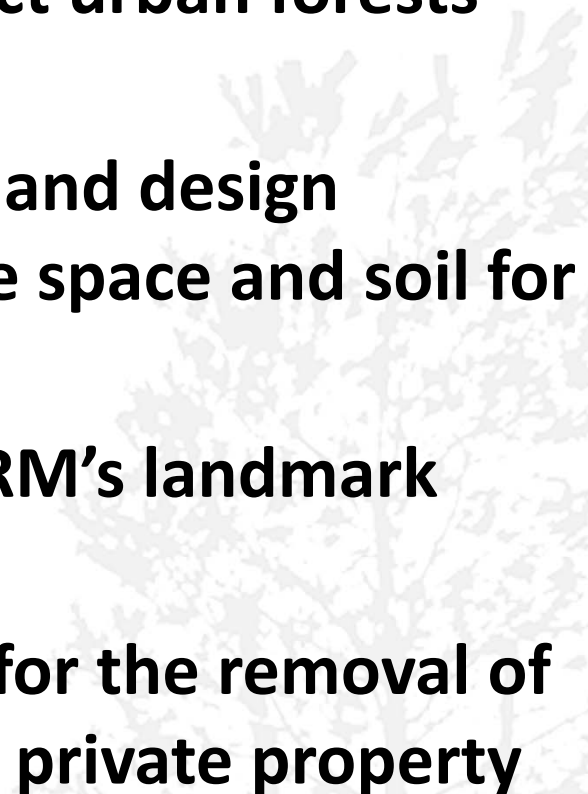


Theme 2 - Private Realm

- **Priorities**
 - **Develop educational programs**
 - Target residents, businesses and youth
 - Incentive programs for property owners
 - Help establish neighbourhood stewardship groups
 - **Establish a non-profit urban forest trust**
 - Fundraising, community development, educational programs
 - **Form partnerships with NGOs, businesses, and corporations**
 - Draw on the expertise of profit and non-profit sectors

Theme 3 – Regulations and By-laws

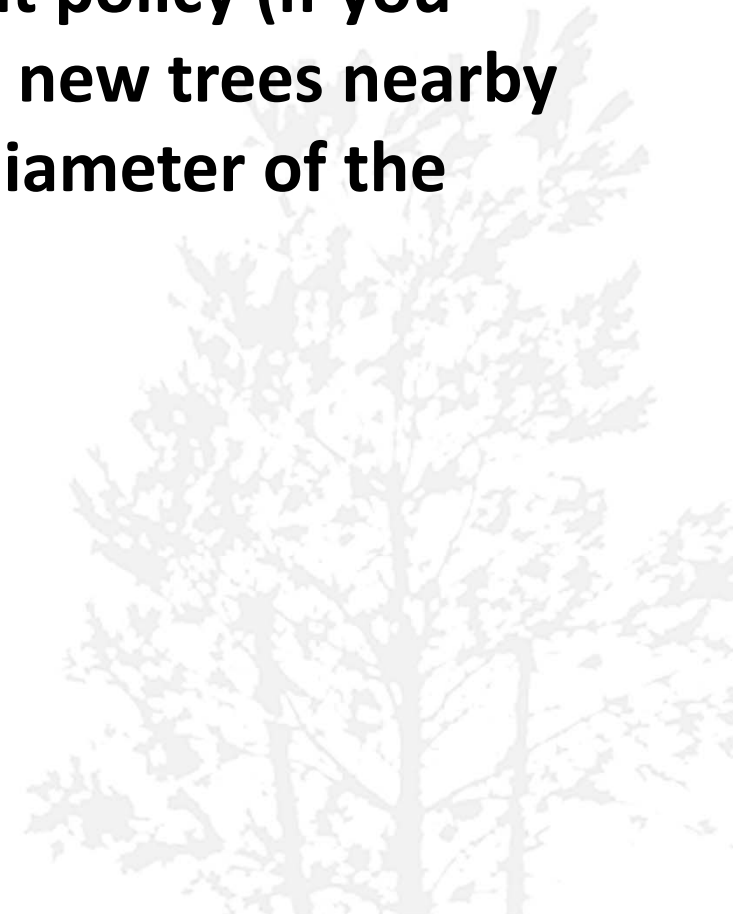
- **Priorities**

- **Adopt new measures to protect urban forests during development**
 - **Improve HRM's infrastructure and design standards to provide adequate space and soil for the growth of large trees**
 - **Promote the recognition of HRM's landmark trees**
 - **Develop a permitting system for the removal of 10 trees or more, annually, on private property**
- 

Theme 3 – Regulations and By-laws

- **Priorities**

- **Adopt a diameter replacement policy (if you remove a tree you must plant new trees nearby which in total will equal the diameter of the removed tree)**



Implementation Priorities

- 1. Increase funding/plant more trees on HRM land**
- 2. Adopt new measures to protect urban forests during development**
- 3. Develop educational programs**
 - Other supporting actions will be not be omitted from the UFMP however, the public workshops and online survey have provided direction from HRM citizens for establishing priorities regarding the resources and program scheduling necessary for an orderly implementation of the Plan.**

Next Steps

- 1. Incorporate public feedback**
- 2. Complete implementation chapter (costing, priorities, timing, human resources)**
- 3. Present final UFMP to ESSC**
- 4. Present final UFMP to Regional Council**
- 5. Implement the Plan**



Comments and
Questions Welcome