



# OURHRM ALLIANCE

Planning for  
liveable communities

# Who is the Our HRM Alliance

- 40 member groups.
- From business, environment, recreation, health and social sectors.
- Have all agreed to the Seven Solutions though opinion on other matters may differ.
- Want to positively influence the first five-year review of the RMPS.

# 40 Groups of the Our HRM Alliance

## Representing 13 of the 16 Districts

- Beechville, Lakeside, Timberlea Trail
- Canada Green Building Council – Atlantic Chapter
- Canadian Parks and Wilderness Society, NS Chapter
- Canoe Kayak NS
- Chezzetcook-Musquodoboit Trail Association
- Citizens' Climate Lobby
- Coastal Communities Network
- Cole Harbour Parks and Trails Association
- Community Coalition to End Poverty in NS
- Dalhousie Office of Sustainability
- Downtown Dartmouth Business Commission
- Downtown Halifax Business Commission
- Eastern Shore Forest Watch
- Ecology Action Centre
- Five Bridges Wilderness Heritage Trust
- Friends of Hemlock Ravine
- FUSION Halifax
- GPI Atlantic
- Halifax Field Naturalists
- Halifax North West Trails Association
- Halifax Regional Trails Association
- Halifax Urban Greenway Association
- Happily Ever Active Association
- Heart and Stroke Foundation of NS
- Hike Nova Scotia
- Main Street Dartmouth and Area Business Improvement Association
- McIntosh Run Watershed Association
- North End Business Association
- North End Community Health Centre
- Preston and Area Trails Association
- Quinpool Road Mainstreet District Association
- Sackville Business Association
- Sackville Rivers Association
- Save the Bedford Basin Reef
- Shubenacadie Watershed Environmental Protection Society
- Spring Garden Area Business Association
- St. Margaret's Bay Stewardship Association
- Williams Lake Conservation Company
- Woodens River Watershed Environmental Organization
- YWCA - Halifax

# RP+5

- Regional Municipal Planning Strategy (RMPS) was adopted in 2006.
- Purpose was to guide growth and development in the Municipality for the next 25 years (until 2031).
- RMPS is good but hard for public to access.
- Our Seven Solutions try to make the complex simple.

# Our Seven Recommended Solutions



# 1. Use Greenbelting

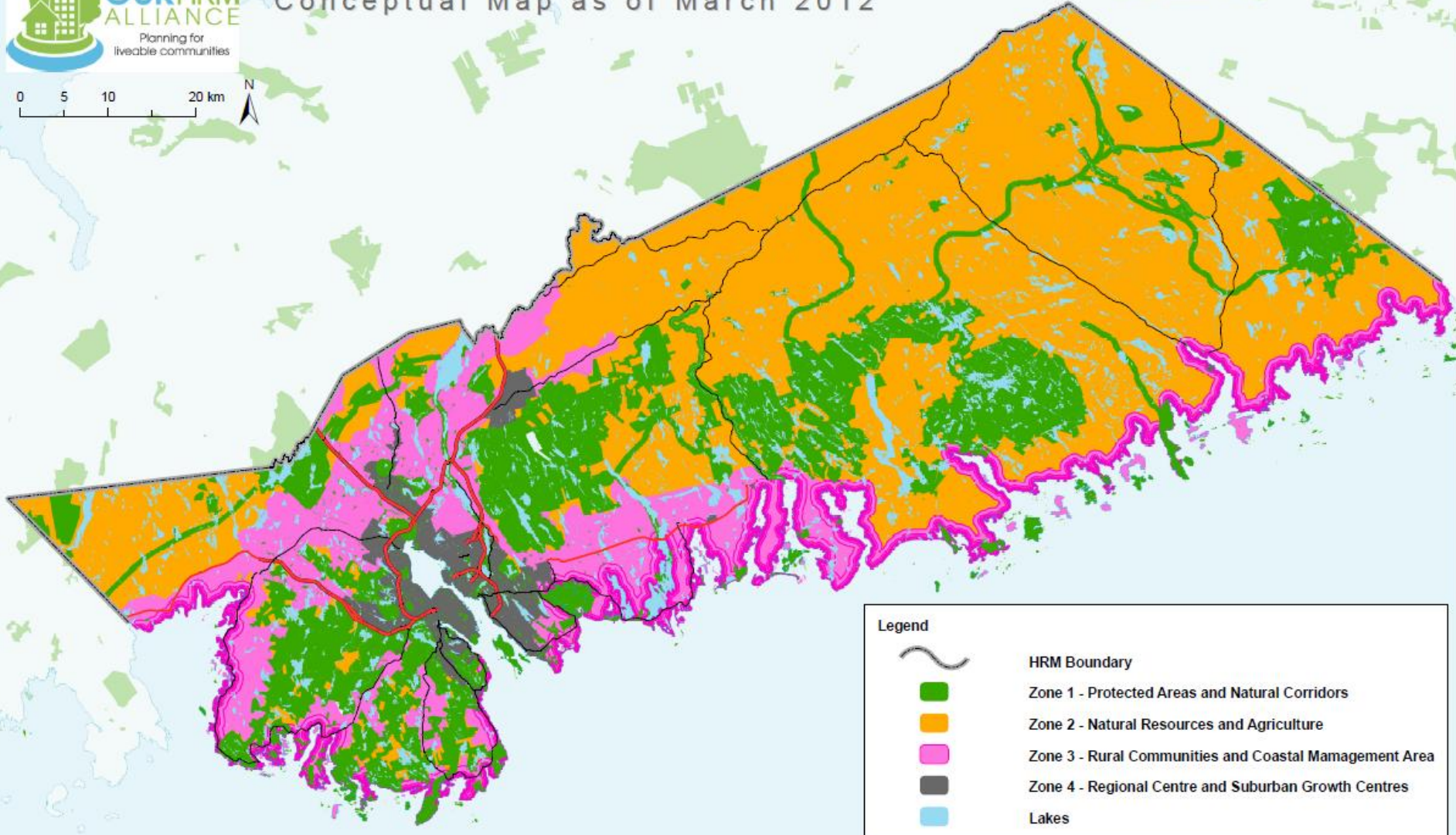






# Greenbelting Plan for Halifax Regional Municipality: A Four Zone Approach

Conceptual Map as of March 2012



Legend	
	HRM Boundary
	Zone 1 - Protected Areas and Natural Corridors
	Zone 2 - Natural Resources and Agriculture
	Zone 3 - Rural Communities and Coastal Management Area
	Zone 4 - Regional Centre and Suburban Growth Centres
	Lakes





# Zone One – Protected Areas and Natural Corridors

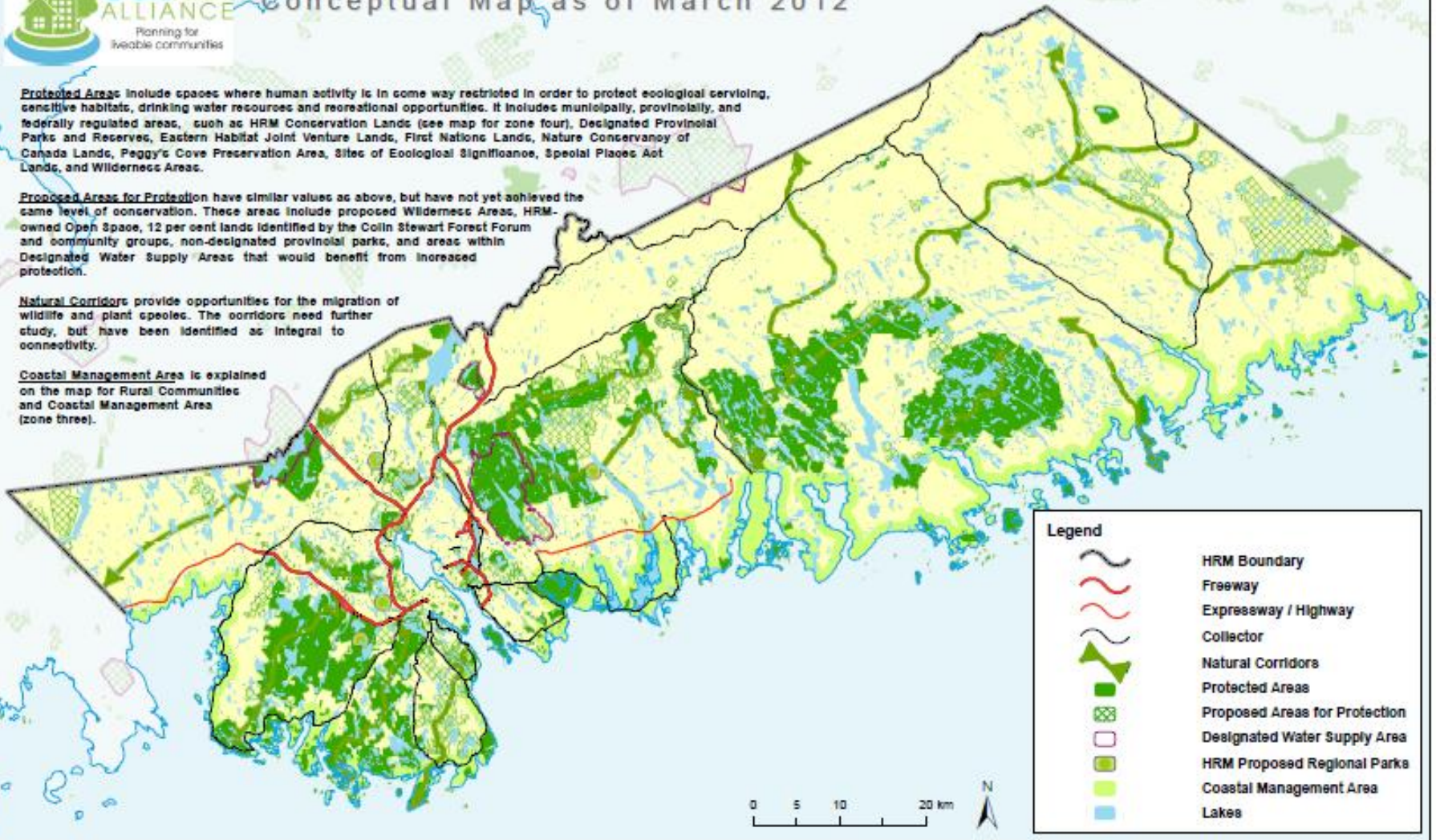
## Conceptual Map as of March 2012

**Protected Areas** include spaces where human activity is in some way restricted in order to protect ecological services, sensitive habitats, drinking water resources and recreational opportunities. It includes municipally, provincially, and federally regulated areas, such as HRM Conservation Lands (see map for zone four), Designated Provincial Parks and Reserves, Eastern Habitat Joint Venture Lands, First Nations Lands, Nature Conservancy of Canada Lands, Peggy's Cove Preservation Area, Sites of Ecological Significance, Special Places Act Lands, and Wilderness Areas.

**Proposed Areas for Protection** have similar values as above, but have not yet achieved the same level of conservation. These areas include proposed Wilderness Areas, HRM-owned Open Space, 12 per cent lands identified by the Colin Stewart Forest Forum and community groups, non-designated provincial parks, and areas within Designated Water Supply Areas that would benefit from increased protection.

**Natural Corridors** provide opportunities for the migration of wildlife and plant species. The corridors need further study, but have been identified as integral to connectivity.

**Coastal Management Area** is explained on the map for Rural Communities and Coastal Management Area (zone three).



**Legend**

- HRM Boundary
- Freeway
- Expressway / Highway
- Collector
- Natural Corridors
- Protected Areas
- Proposed Areas for Protection
- Designated Water Supply Area
- HRM Proposed Regional Parks
- Coastal Management Area
- Lakes





## Zone Two - Natural Resources and Agriculture

Conceptual Map as of March 2012

Natural Corridors are explained on the map for *Protected Areas and Natural Corridors (zone one)*.

Recognizing that agriculture and natural resource extraction are important sectors of Nova Scotia's economy, these activities should be supported with vibrant Resource and Agricultural Growth Centres.

The lands identified for both Agriculture Potential and Forestry Potential refer to data available from HRM as found in the Generalized Future Land Use map in the RMPS.

Coastal Management Area explained on the map for *Rural Communities and Coastal Management Area (zone three)*.







# Zone 3 - Rural Communities and Coastal Management Area

## Conceptual Map as of March 2012

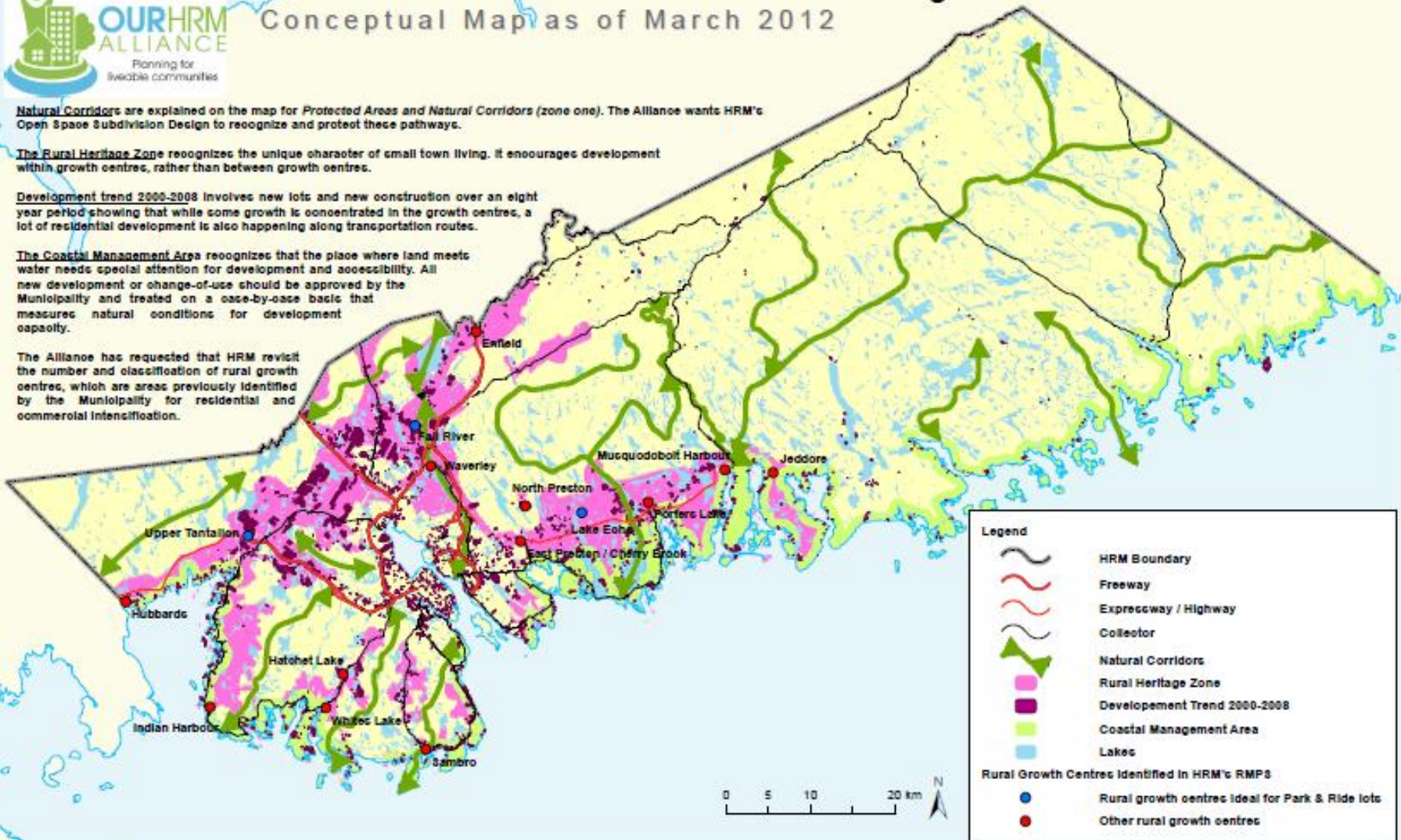
**Natural Corridors** are explained on the map for *Protected Areas and Natural Corridors (zone one)*. The Alliance wants HRM's Open Space Subdivision Design to recognize and protect these pathways.

The **Rural Heritage Zone** recognizes the unique character of small town living. It encourages development within growth centres, rather than between growth centres.

**Development trend 2000-2008** involves new lots and new construction over an eight year period showing that while some growth is concentrated in the growth centres, a lot of residential development is also happening along transportation routes.

The **Coastal Management Area** recognizes that the place where land meets water needs special attention for development and accessibility. All new development or change-of-use should be approved by the Municipality and treated on a case-by-case basis that measures natural conditions for development capacity.

The Alliance has requested that HRM revisit the number and classification of rural growth centres, which are areas previously identified by the Municipality for residential and commercial intensification.

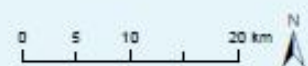


**Legend**

- HRM Boundary
- Freeway
- Expressway / Highway
- Collector
- Natural Corridors
- Rural Heritage Zone
- Development Trend 2000-2008
- Coastal Management Area
- Lakes

**Rural Growth Centres Identified in HRM's RMP3**

- Rural growth centres ideal for Park & Ride lots
- Other rural growth centres

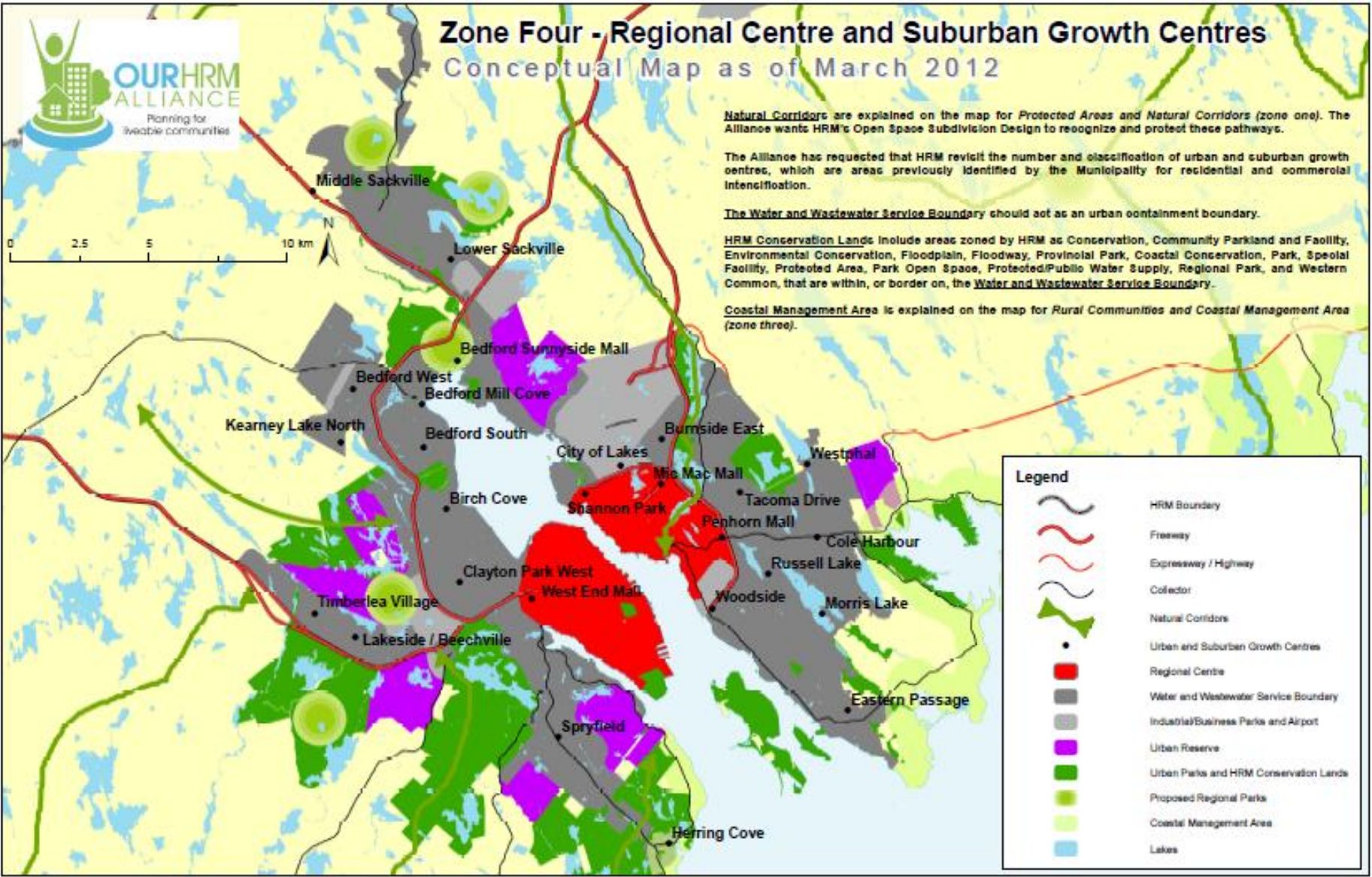
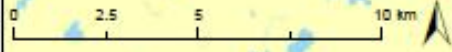






# Zone Four - Regional Centre and Suburban Growth Centres

## Conceptual Map as of March 2012



**Natural Corridors** are explained on the map for Protected Areas and Natural Corridors (zone one). The Alliance wants HRM's Open Space Subdivision Design to recognize and protect these pathways.

The Alliance has requested that HRM revisit the number and classification of urban and suburban growth centres, which are areas previously identified by the Municipality for residential and commercial intensification.

**The Water and Wastewater Service Boundary** should act as an urban containment boundary.

HRM Conservation Lands include areas zoned by HRM as Conservation, Community Parkland and Facility, Environmental Conservation, Floodplain, Floodway, Provincial Park, Coastal Conservation, Park, Special Facility, Protected Area, Park Open Space, Protected/Public Water Supply, Regional Park, and Western Common, that are within, or border on, the **Water and Wastewater Service Boundary**.

**Coastal Management Area** is explained on the map for Rural Communities and Coastal Management Area (zone three).

Legend	
	HRM Boundary
	Freeway
	Expressway / Highway
	Collector
	Natural Corridors
	Urban and Suburban Growth Centres
	Regional Centre
	Water and Wastewater Service Boundary
	Industrial/Business Parks and Airport
	Urban Reserve
	Urban Parks and HRM Conservation Lands
	Proposed Regional Parks
	Coastal Management Area
	Lakes

# HotSpots

## Exemplify need for the Greenbelting Solution

- Ingramport
- Blue Mountain-Birch Cove
- Herring Cove/Purcell's Cove/Backlands
- Reef in Bedford Basin
- Sackville Rivers Watershed



## 2. Invest In Downtown and Growth Centres



Calgary is a city that recognizes the need for growth in its core.

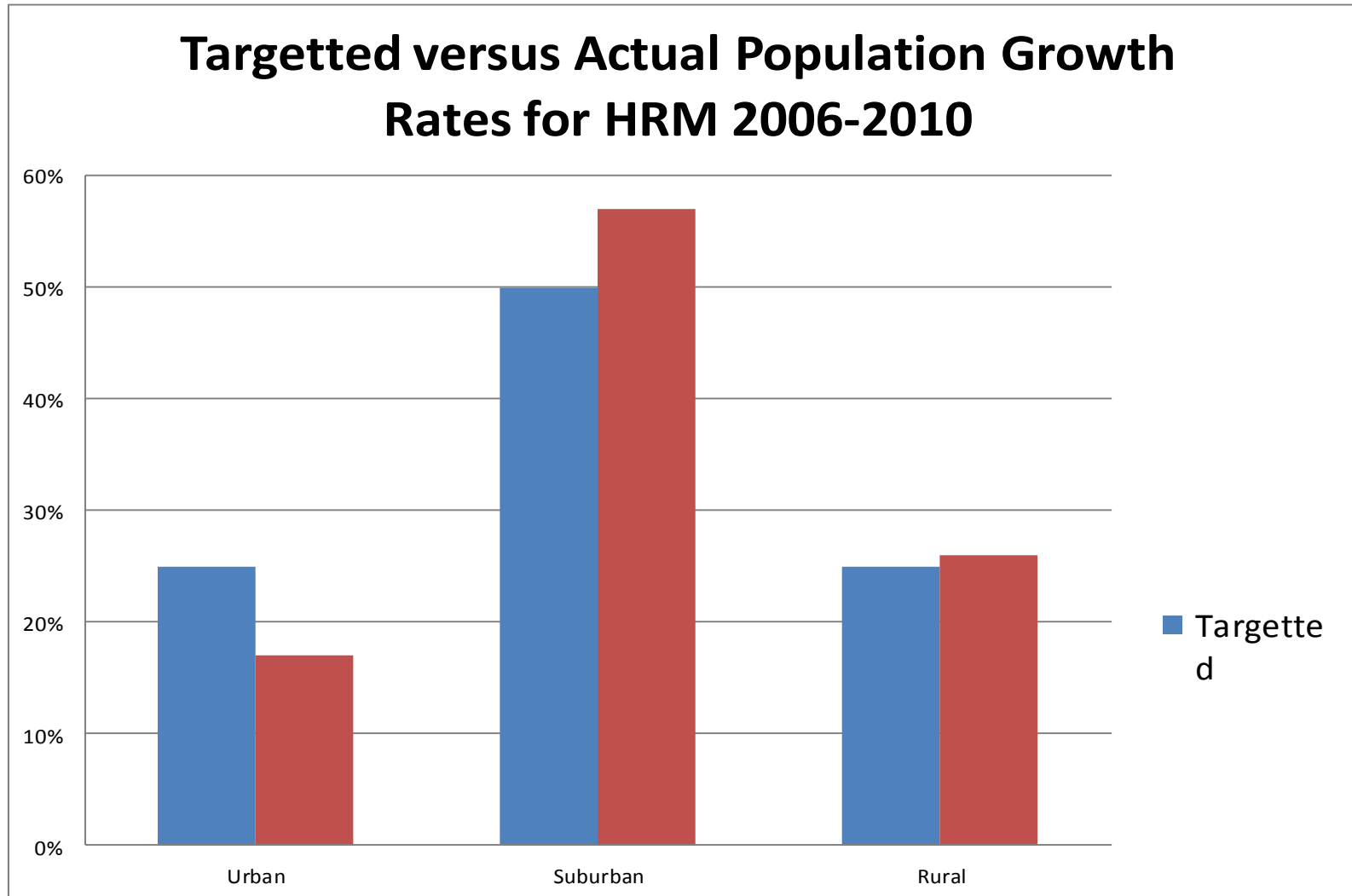


### 3. Prioritize Investment In Transit and Active Transportation



Winnipeg recognizes the need for a light rail transit system, despite the cost

# 4. Adhere to Residential Growth Targets



# 5. Evaluate Development Charges To Ensure Municipality Is Not Burdened By Growth



Markham is a city that charges enough in Capital Cost Contributions to deter sprawl



# 6. Protect Water Resources



The Sackville River in HRM is threatened by runoff from storm water overflow and improper development

## 7. Commit to Measuring Success of Actions Identified in the RMPS



Toronto is subjected to evaluations by arms' length auditors.

# Moving forward

- Making the Seven Solutions an election issue – meeting candidates, mayoral forum on September 19.
- Questionnaire from both councillor and mayoral candidates.
- Moving the issues of Alliance members forward.



**OURHRM**  
ALLIANCE

Planning for  
liveable communities

[www.ourhrmalliance.ca](http://www.ourhrmalliance.ca)