



**Your Council.
Your Say.**
HRM's District Boundary Review

Phase 2:
Polling District
Boundary Review
Regional Council – November 30, 2010




Required by legislation
(Municipal Government Act)

Reviews the size of Council

And

Specific Polling District
Boundaries



PHASE 2: POLLING BOUNDARY REVIEW

Phase 1 – Governance

“Regional Council’s decision of August 3, 2010 to retain the status quo of
23 districts in HRM”



PHASE 2: POLLING BOUNDARY REVIEW

Phase 2 – Review of Polling District Boundaries



PHASE 2: POLLING BOUNDARY REVIEW

Phase 2 –Legislative Direction on Boundaries

MGA Section XVI

369 (1) *...every eight years the council shall conduct a study of the number of boundaries of polling districts in the municipality, their fairness and reasonableness and the number of councillors*

369 (2) *After the study is complete, and before the end of the year in which the study is conducted he council shall apply to the Board (NSUARB) to confirm or alter the number and boundaries of polling districts and the number of councillors*

MGA also outlines criteria to be used in evaluating polling districts

NSUARB has outlined specifics on how the study is to be conducted and acceptable voter variances (generally +/- 10%)



PHASE 2: POLLING BOUNDARY REVIEW

Phase 2 – Public Consultation

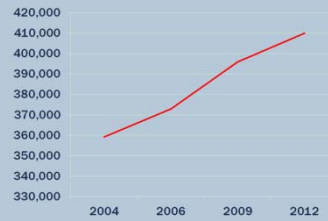
Take proposed boundary changes out to the public for comment

Revise if necessary
Council ratifies

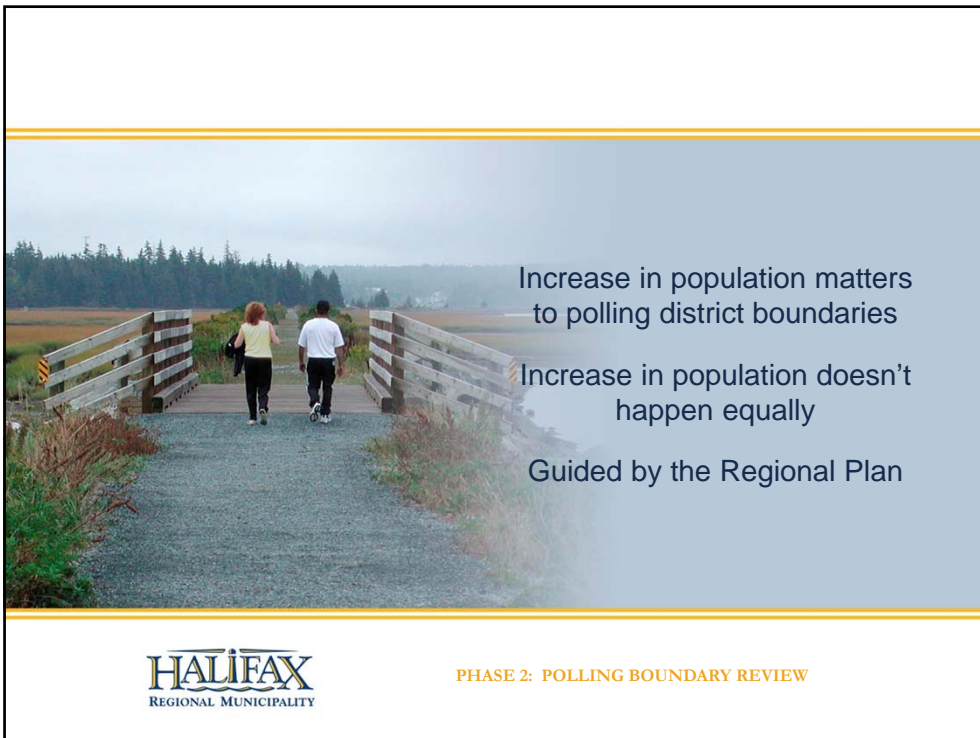
Submitted
to the Nova Scotia Utility and
Review Board (NSUARB) by
December 31, 2010



HRM's population is growing
410,000 by 2012



PHASE 2: POLLING BOUNDARY REVIEW



PHASE 2: POLLING BOUNDARY REVIEW

Based on growth & population projections 11 of 23 current districts will be either over or under the required voter average by 2012.

Some changes to polling district boundaries are required



PHASE 2: POLLING BOUNDARY REVIEW

Phase 2 – Committee's Direction for Revising Boundaries

Take growth into account

Ensure parity between districts

Minimize the change to voters

Keep communities together
within the same electoral districts

Use identifiable boundaries

Meet the NSUARB requirement of voter equity (+/- 10% of average)



PHASE 2: POLLING BOUNDARY REVIEW

Phase 2 – Public Consultation

Staff Review Team: Finance, Planning, Development, Civic Addressing,
GIS & Data Services, Legal & Clerks Office

Met with Councillors requesting to meet

Reviewed by Committee

Ads in metro & local papers & radio

Presentation & maps posted on halifax.ca

Seven (7) public meetings/ call for written submissions

***Minutes & Written Submissions contained in Attachments 2 & 3 of
the report***



PHASE 2: POLLING BOUNDARY REVIEW

Proposed 2012 Polling District Boundaries

The polling district boundaries proposed for the 2012 Municipal Election are contained in the 23 maps before Council and posted on halifax.ca on today's agenda.



PHASE 2: POLLING BOUNDARY REVIEW

2012 Projected Voters per proposed District

Total Projected 2012 Voters*	327,613	
Average Voters / District	10% Lower	10% Higher
14,244	12820	15668
* from Environics Analytics report		

DIST_ID	Total Voters 2012	Percentage Deviation
1	12,791	-10.2%
2	15,978	12.2%
3	15,285	7.3%
4	16,202	13.7%
5	14,640	2.8%
6	14,822	4.1%
7	15,035	5.6%
8	13,222	-7.2%
9	12,733	-10.6%
10	14,981	5.2%
11	13,472	-5.4%
12	12,836	-9.9%
13	13,232	-7.1%
14	13,716	-3.7%
15	14,417	1.2%
16	12,995	-8.8%
17	13,237	-7.1%
18	13,059	-8.3%
19	15,126	6.2%
20	15,985	12.2%
21	14,349	0.7%
22	15,140	6.3%
23	14,361	0.8%



PHASE 2: POLLING BOUNDARY REVIEW

Recommendation of the Governance & District Boundary Review
Committee of Regional Council

That Halifax Regional Council ratify the recommendations of the Governance & Boundary Review Committee regarding polling district boundaries, as contained in Attachments 4 and 5 of the Committee report dated November 22, 2010, for submission by HRM to the NSUARB.



PHASE 2: POLLING BOUNDARY REVIEW