

May 9, 2006  
Halifax Regional Council

**TO:** Mayor Kelly and Members of Halifax Regional Council

**SUBMITTED BY:** Stephanie Parsons  
for Terry Myer, Chair  
Advisory Committee for Persons with Disabilities

**DATE:** April 10, 2006

**SUBJECT:** Advisory Committee for Persons With Disabilities Annual Report

**ANNUAL REPORT**

**ORIGIN**

As per the Committees terms of reference the Committee is required to submit a report of activities to Council during the first quarter of each year. The report provides an update on the activities of the Committee during 2005-2006.

**RECOMMENDATIONS**

There are no recommendations associated with this report.

**BACKGROUND**

The Advisory Committee for Persons with Disabilities was established pursuant to s.11(4) of the Halifax Regional Municipality Act S.N.S.1995, c.3 to advise and assist Council to facilitate and to promote the access and accessibility of all citizens to their community including municipal government, programs and services.

The main responsibility of the Committee is to advise Halifax Regional Municipal Council on the impact of Municipal policies, programs and services on persons with disabilities.

We would like to thank staff for their cooperation and support regarding the many concerns raised by the Advisory Committee for Persons with Disabilities.

We would also like to thank the members who have volunteered their time on behalf of persons with disabilities in our community in 2005. The members of the Committee were Joanne Coffey, Nancy Mann, Patrick Harrington, Past Chair, Warren Reed, Past Vice Chair, Betty MacDonald, Jeff Wall, Jen Powley, Meredith Hutchings, Lynn Demont, Mary Newcombe, Derek Mathers, Cathy Cranidge, Daniel McLellan, Mary Wallworth. Councillor Meade and Councillor Murphy.

**DISCUSSION**

During the year the committee met with the following persons to discuss and provide input on the following topics

<b>Topic</b>	<b>HRM Staff/Consultants</b>
Inclusive Playgrounds	Mr. Blair Blakeney, Coordinator, Capital Projects Mr. Kevin Conley, Project Manager, Capital Projects
Active Transportation Plan	Mr. Chris Lowe, Chief Planner, SGE Acres, Mr. Joseph Lilly, Planner, SGE Acres, Ms. Roxanne MacInnis, Planner
Regional Plan	Ms. Roxanne MacInnis, Planner
Access - A - Bus Metro Link	Mr. Larry Hilton, Supervisor, Special Services
Cultural Plan	Holly Richardson, Community Coordinator
Accessibility to HRM Facilities	Mr. Phil Townsend, Manager Capital Projects

### **Inclusive Playgrounds**

The Committee has been active in the design of the playground. Parents of disabled Children and other stakeholders have put forth a great team effort and contributed lots of ideas. HRM has committed approximately \$250,000 to the playground. Citizens applied to 25 foundations and raised \$51,000.00

### **Accessible Gas Stations**

The Committee raised concern regarding the decrease of full service gas stations and its impact on persons with disabilities. We thank Council for expressing our concerns to the Nova Scotia Retail Gasoline Dealers Association and the Nova Scotia Utility and Review Board and the NS Department of Environment and Labor. Unfortunately unless the province enacts legislation to regulate gas stations, we need to rely of the courtesy of the attendants.

### **Barrier Free Design and Building Codes**

The Committee has advised the Regional Planning Committee of its concerns regarding the Universal Design of franchises. The Committee is of the opinion that the change of use clauses needs to be removed and replaced with a change of an occupancy clause. As the By-law currently stands, if an older building was a coffee shop and changes ownership and still remains a coffee shop, they are not required to bring the building up to code. Where as a change of occupancy will require that the new owner bring the building up to code.

The Committee was an active participant in the amendment to the NS Building Code requiring that a certain percentage of new multiple unit buildings provide for barrier free units. The Committee recommended that ten percent of the units be barrier free, the province will be enacting a five percent clause which is anticipated to come into effect May 1, 2006.

The Province of Ontario Disabilities Act received Royal Assent in December 2001. It establishes requirements of the Government of Ontario, municipalities, public transportation organizations, school boards, hospitals, colleges and universities, to identify, prevent and remove barriers to people with disabilities. It has set a precedent which allows the municipalities to stipulate accessibility requirements when granting business licences. The Act also requires that municipalities provide an accessibility plan. The Committee encourages Regional Council to advocate for a Nova Scotia Disabilities Act.

The Committee is pleased to see that HRM has adopted Universal Design as a desirable standard for future planing.

### **Impact Training Session**

Six members of Council participated in a Impact Training Session. The session was conducted by

**Advisory Committee for Persons with Disabilities  
Annual Report**

**Page 4**

---

the Committee in association with the Canadian National Institute for the Blind. The purpose of the program is to enable participants to gain insight to the problems and obstacles that persons with disabilities may face and to provide a better understanding of why certain designs do not work. The Impact Training Session has been previously provided to Transportation Services and Human Resources Staff.

**Accessible Transportation**

Adequate accessible transportation is still a focus of the committee. The committee has provided various suggestions to staff. Of major concern to persons with disabilities is the access to sidewalks and bus shelters in the winter. We would suggest that Council request that staff give priority to clearing the snow from the sidewalks and bus shelters along the nine accessible transit routes.

Thank you Your Worship, Members of Council and staff for continuing to support and address the needs of persons with disabilities We will continue to work to make the municipality barrier free.

**Accessibility to Facilities in HRM**

There have been many concerns raised with the accessibility of City Hall this year. The Committee has been working with the Manager of Capital Projects to address the most recent concerns regarding automatic door closures and access to the washrooms.

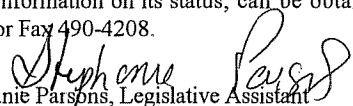
At the request of the Committee, Mr. Townsend has contracted a company to provide an accessibility assessment of Halifax City Hall . At the April 10, 2006 meeting of the Advisory Committee for Persons With Disabilities, Mr. Townsend presented a the final report to the Committee. He advised the Committee that he has identified the washrooms and the Argyle Street entrance as a priority and that he has included accessability upgrades as part of the proposed 2006-2007 budget. The Committee passed a motion accepting the contents of the Accessibility Audit and staffs recommendation to proceed with accessability upgrades to the second and third floor washrooms and the Argyle Street entrance. These upgrades may not solve all our problems but would provide some assistance in removing some of the issues.

**ATTACHMENTS:**

1. Terms of Reference, Advisory Committee for Persons with Disabilities.
2. Accessibility Audit, Halifax Old City Hall, January 2006.

Additional copies of this report, and information on its status, can be obtained by contacting the office of the Municipal Clerk at 490-4210, or Fax 490-4208.

Report Prepared by:

  
Stephanie Parsons, Legislative Assistant

Report Approved by:

Advisory Committee for Persons with Disabilities

**HALIFAX REGIONAL MUNICIPALITY**  
**ADVISORY COMMITTEE FOR PERSONS WITH DISABILITIES**

**TERMS OF REFERENCE**

**Revised October 23, 2004**  
**Revised February 24, 2004**

The Advisory Committee for Persons with Disabilities was established pursuant to s.11(4) of the Halifax Regional Municipality Act S.N.S.1995, c.3 to advise and assist Council to facilitate and to promote the access and accessibility of all citizens to their community including municipal government, programs and services. Accessibility for this purpose meaning the removal of all barriers confronting citizens with disabilities, including attitudinal barriers.

**1. OBJECTIVE**

The main responsibility of the Committee is to advise Halifax Regional Municipal Council on the impact of Municipal policies, programs and services on persons with disabilities.

- 1.1 To facilitate the full participation of all citizens with disabilities in civic and community affairs by ensuring that policies, programs and services do not impose barriers to such participation.
- 1.2 To increase civic and community awareness regarding the disability communities within HRM by promoting effective communication.
- 1.3 To work towards the elimination of physical and attitudinal barriers facing persons with disability by advising Council on issues and concerns raised by citizens.
- 1.4 To ensure HRM's disability communities have an equitable opportunity to voice their views on disability and other issues affected by monitoring the effectiveness of HRM policies, programs and services.

**2. RESPONSIBILITIES**

- 2.1 To advise Council on matters related to the status of persons with disabilities.
- 2.2 To review and or monitor existing and proposed by-laws of Council to promote full participation of persons with disabilities in their community.

- 2.3 Act as a resource for all municipal departments in responding to issues and concerns of persons with disabilities.
- 2.4 Review and or monitor the accessibility of existing and proposed municipal services and facilities.
- 2.5 To advise Council and through Council municipal departments and the public about strategies designed to achieve the objectives of this Committee.
- 2.6 To receive and review information from Council or its committees and commissions and make recommendations.

3. **COMPOSITION**

- 3.1 Members of the Committee shall be appointed by Council and will consist of not less than 8 residents of HRM who shall come from the disability communities, including parents and advocates; and two members of Council.

4. **SUB-COMMITTEES**

- 4.1 The Committee may establish subcommittees to deal with specific issues, subject to the submission of a work plan (identifying issues, goals, time frame, scope of work and resources required), and Council approval. The ability of a committee to establish subcommittees, other than through the Council approval process is to identify specific subcommittees in the body of the objects of the committee whereby they can outline the role and scope of subcommittees and the number of subcommittees to be set.
- 4.2 The Committee shall develop terms of reference and time lines for any such sub-committees as referred to in 4.1.

5. **OFFICERS**

- 5.1 The Committee shall yearly elect a Chairperson from among its members at the first meeting of the year.
- 5.2 The Committee shall yearly elect a Vice-chairperson from among its members at the first meeting of the year.
- 5.3 The officers of the Committee shall be elected from among the 8 residents who serve as members.

6. **QUORUM**

- 6.1 Quorum shall consist of not less than 50% + 1 of the voting members.
- 6.2 Meetings can be held without a quorum present, however a quorum will be required for voting purposes.

7. **MEETINGS**

- 7.1 The Committee shall meet no less than four times per year. The Council will provide Municipal Clerk resources **for all regular and special meetings** and additional support will be subject to the approved and/or revised work plans of the committee where the number of meetings and resources required are to be identified.
- 7.2 In case of emergency, the Chairperson or designate can call a meeting with reasonable notice.
- 7.3 Upon receipt of a written petition of the majority of the members of the Committee, the Chairperson shall summon a special meeting for the purpose and at the time mentioned in the petition, on at least three days' notice.

8. **RELATIONSHIP TO COUNCIL AND CAO**

- 8.1 The Committee shall make recommendations to Council and/or the Chief Administrative Officer solely in an advisory capacity.
- 8.2 Significant issues, plans and programs impacting on persons with disabilities and the disability community shall be referred to the Committee for its consideration and recommendations to Council and/or the Chief Administrative Officer.
- 8.3 Members of the committee and Council shall come together on a periodical basis to participate in a joint working session.
- 8.4 The CAO will appoint an advisor(s), with skills and knowledge appropriate to the subject matter, as recommended by Directors and General Managers, in consultation with the Committee.

9. **APPOINTMENTS**

- 9.1 A public appointment process encouraging representation from HRM's diverse communities be used with regard to appointments to this Committee.

9.2 All appointments shall be for a two-year term following Council's normal selection and appointment process. Members may be re-appointed for no more than three consecutive terms.

10. **RESIGNATIONS**

10.1 Any resignation from the Committee shall be tendered in writing to the Chairperson, who will advise Council through the Municipal Clerk.

10.2 The name of a replacement member shall be obtained through the most recent public appointment process from the list maintained by the Municipal Clerk

10.3 When approved by Council, the new appointee shall serve the remainder of the vacant term.

11. **ABSENTEEISM**

11.1 In the case of any member missing three meetings without the consent of the Committee, the member shall be deemed to have resigned.

12. **PROCEDURE**

The meeting shall follow the rules of order (Administrative Order #1) approved by Council as amended from time to time.

13. **REPORT TO COUNCIL**

13.1 The Committee shall submit a report of activities to Council during the first quarter of each year.

13.2 The Chairperson of the Committee, or a designate, may make reports to Council on the activities of the Committee as necessary, or as requested by Council, together with such other presentations that the Committee may deem advisable.

14. **AMENDMENTS**

14.1 The Committee may from time to time recommend to Council the amendment of these Terms of Reference following an appropriately voted resolution.



15. **REIMBURSEMENT FOR EXPENSES**

- 15.1 Each member of the committee shall serve without remuneration, but may be reimbursed by Council for any necessary expenses incurred while engaged in official duties, provided that such expenses are approved by Council in advance.

(feb2000)

# **Accessibility Audit**

## **Halifax Old City Hall** Halifax, Nova Scotia

prepared for the  
Halifax Regional Municipality

January, 2006

### **STREETLINES**

Architectural Services for Independent Living

---

**Cynthia M. Street, Architect, M.Sc.**

1681 Fairfield Road,  
Halifax, Nova Scotia  
B3H 4E8

**Telephone: (902) 422-5484**

# **Halifax Old City Hall**

1841 Argyle Street  
Halifax, Nova Scotia  
B3J 3Y8

## **Contents**

---

<b>Executive Summary</b>	<i>ii</i>
<b>1.0 Introduction</b>	<b>1</b>
<b>2.0 Inventory of Non- or Partially Compliant Items</b>	<b>4</b>
<b>Appendix A: Building Access Checklist</b>	
<b>Appendix B: Photographs</b>	

## **Executive Summary**

---

The **Halifax Old City Hall** is a National Historic Building. Three levels of accessibility have been defined in the Building Access Checklist. For a building to achieve a barrier-free standard of Level 3, all items must be in compliance. It should be noted that some items within Sections are not part of the Nova Scotia Building Code Regulations, but were included to raise the standard above minimum. Levels 2 and 1 permit lesser degrees of compliance.

Regarding accessibility into and throughout the building, there have been a number of complaints, requests, and suggestions:

1. Accessible entrance at Argyle Street is controlled from the security desk. There is no indication to a visitor if the buzzer signal is working. Signage is confusing/deceiving. The door itself requires repair. Out of town visitors in particular would be left with a negative impression of Halifax with this unwelcoming reception.
2. Elevator is inadequate to accommodate some wheelchairs and scooters.
3. Main entrance from the Grand Parade is not open to wheelchair adaptation.
4. Washroom access.
5. Council chamber - lack of secondary exit.
6. Central stair - no areas of refuge.

From the audit, the primary areas of concern include, in order of significance: the accessible entrance, all washrooms, elevator cab size, ramp leading from the Grand Parade to accessible entrance, minor ramp considerations at the main level (floor 2), and main reception counter.

## **1.0 Introduction**

---

### **General**

This building has been audited using the Nova Scotia Building Code Regulations 2004 (NSBCR) with additional items from the CSA B651 standards for accessibility . These items are referenced by code number in the building access checklist under their respective headings. For the **Old City Hall Building**, compliance with the NSBCR would be adequate to meet the minimum standard, but CSA items are recommended and, indeed, have been applied in provincially owned buildings. The term “accessible” used here refers to manual wheelchair access.

The audit sheets refer to “levels” of accessibility. For a building to achieve a barrier-free standard of Level 3, all items from the Building Access Checklist must be adhered to, including those items above and beyond the NSBCR. Levels 2 and 1 permit decreasing degrees of compliance and were originally created to address varying building occupancies. This would give the building some flexibility in achieving “barrier-free” status at a cost that was appropriate for that occupancy. Thus, to achieve:

Level 3 - items marked “1, 2, and 3” would apply.

Level 2 - items marked “1 and 2” would apply.

Level 1 - only items marked “1” would apply.

The audit process required some subjectivity and common sense. Certain doors may not presently be in a BF path of travel (eg) doors approached by stairs. If there was an alternate way in, the data for the stair door may not be included in the inventory. If there was no other way in, or if the door needs to be accessible to reach an area of refuge, or if it may reasonably be expected that people who have difficulty walking will use the stair, the data was included.

Items in Section I (Stair or Stairwell) are taken from CSA Standards and Part 3 and 9 of the National Building Code. They are not part of the NSBCR barrier-free standards, and compliance with these items is not required in this building unless major renovations occur in those areas. Including this section could have a significant financial impact, and again in this case, common sense ( cost against benefit) should prevail when deciding upon a renovation. For example, it is usually impossible or very difficult to change the riser height in a stairwell.

Other areas where it may make sense to deviate from the code are as follows:

- 1) Expanding existing vision panels in fire rated doors - these doors cannot be altered because the door is designed with a certain fire rating label. The size and location rule applies to “if” there is a vision panel present, but vision panels themselves are not mandatory. Vision panels in doors should be no more than 900 from the floor, but the door could equally have no vision panel and still be compliant.
  
- 2) Location of toilet paper dispensers - may have to be above the grab bar if they are the large roll dispensers which will dispense too close to the floor if installed as per code. Compliance should be redefined as “reachable by a user when seated.”
  
- 3) Location of grab bar - if it is (eg) 40 mm too low, could be considered “close enough,” in an existing building, but must be enforced in new construction.
  
- 4) Urinal - if there is an accessible stall in the men’s washroom, the urinal need not comply as per code.
  
- 5) Fire extinguishers or temporary fixtures - sometimes protrude into a path of travel but can be easily relocated by in-house maintenance and are not identified here as non-compliance.
  
- 6) Staff only areas. At the present time, there are no wheelchair users among staff. Although there is the distinct possibility a staff person will be hired who uses a wheelchair, in some cases it is best provided on an as-needed basis, (eg) staff lunch room or photocopy room where counters are high, or where a door or opening is narrow, where cost may be prohibitive.
  
- 7) Heritage sites - alternate means of compliance in grey area situations such as in heritage sites such as the Old City Hall Building would have to be considered on a case by case basis.

### **Halifax Old City Hall**

The Old City Hall, designed by Rhodes and Currie Architects, is a National Historic Building. It was constructed on the site of the old Dalhousie medical school in 1888 and was officially opened in 1890. Cost of construction - \$105,000.00.

The building is used solely for city hall functions and has no other occupancy. There are 48+/- municipal employees, none of whom have a noted disability. 2000 people visit between June and September (5 to 25 per day), compared with late fall and winter when the numbers dwindle to very few.

Regarding accessibility into and throughout the building, there have been a number of complaints, requests, and suggestions:

1. Argyle St. "accessible" entrance - A call button is available, but nothing seems to happen from the user's point of view when the button is pushed. Lock must be disengaged at the security desk via pneumatic actuator when and if the signal is heard. Wood replica heritage style door expands in dampness and has become difficult to open. Signage in particular is confusing and deceiving: "For access to building, please use main entrance from Grand Parade." The term "access" here does not refer to wheelchair access. At the main entrance, a sign points to and reads "Wheelchair access Argyle Street entrance." Yet another sign (hand drawn) has been posted as of Jan. 14/06 at the Argyle entrance which attempts to clarify: "Notice - Only couriers, persons with disabilities is (sic) to use this door. All couriers must sign in at the front desk." Entrance into the Old City Hall clearly needs to be addressed.
2. Elevator - inadequate size for some wheelchairs and scooters. Elevator was upgraded last in 1985, inspected annually, but scooters have enlarged.
3. Main door entrance from Grand Parade - unable to create ramp.
4. Main level men's washroom - wheelchair once trapped between doors.
5. Council Chambers - how to exit if main doors became impassable? Occupant load 117 (30 - 40 staff, plus the public).
6. No areas of refuge from upper levels. Central stair is the only exit.

Attention is drawn to the Clerk's Office wherein the path leading from the waiting area is inaccessible, and where the counter height at the reception desk is a barrier due to the need for privacy. The inner offices are not public and were not audited. The high counter height is addressed by having a receptionist come forward to greet any wheelchair users. But this goes against the principle of universal design. If the general public is welcome to this location, modifications need to be made to accommodate all.



## **2.0 Inventory of Non or Partially Compliant Items**

---

Copies of original audits sheets, plans and photographs, if available, are located in Appendices 1 - 3.

### **Section A. Parking**

Accessible parking is possible in the Grand Parade area, although none is indicated. The path of travel to the designated barrier-free entrance includes a paved sidewalk which should be but is not designed as a ramp. At the present time, the most accessible parking would be at any of the nearby public metered spaces.

#### **Grand Parade**

A-2 no designated accessible parking space

### **Section D. Barrier-Free Path of Travel - Exterior Walks**

#### **From Duke Street**

Path leading to this entrance is barrier-free, consisting of brick pavers, and has a level landing at the door. But Duke Street itself is problematic for slope.

#### **From Argyle Street**

Path leading to this entrance is level, barrier-free, consisting of exposed aggregate pavement and brick pavers, and has a level landing at the door. A public metered parking space for disabled users is adjacent to this entrance. A front seat passenger using a wheelchair would have to navigate over a steep curb cut (intended for vehicles) to access the Argyle Street door.

#### **From Grand Parade**

This is the main ceremonial entrance and has architectural (heritage) significance. It would be a challenge to create a new accessible entrance here. Given the presence of alternate barrier-free entrances, this location has not been audited. It is distinctly not wheelchair accessible with its six riser stair.

## **Section E. Ramp or Platform Lift**

### **Level 1 (basement) leading to vault**

- E-1 ramp slope 1:8 instead of 1:12 max.
- E-19 ramp handrail 55 instead of 30-40
- E-22 ramp handrail 30 from wall instead of 40 min.
- E-23 no horizontal extensions to handrail at top and bottom of ramp
- E-24 no termination at top and bottom of handrail

### **Argyle entrance interior**

- E-1 ramp slope 1:10 instead of 1:12 max.
- E-16 ramp width is >1100, 2 handrails required
- E-17 ramp width is >2200, intermediate handrail required
- E-23 no horizontal extensions to handrail at top and bottom of ramp
- E-24 no termination at top and bottom of handrail

## **Section F. Entrance and Door**

Only doors in a BF path of travel or potential path of travel into the building are documented. All secondary exit doors which are not general use "pedestrian entrances" or doors which lead to stairs are not part of this inventory. Thus, at the present time, the main ceremonial entrance is not suitable for and has not been audited for wheelchair access. Compliance under the 50% rule would require one entrance at grade level to be barrier-free and equipped with a (proper) power door. The Argyle St. door is presently the designated BF entrance.

### **Duke Street**

- F-3 no power door operator present
- DR-11 fast closing time (< secs.)
- DR-12 vision panel 1160 instead of 900 from floor

### **Argyle Street**

- F-3 no independently controlled power door operator present
- DR-12 vision panel 1300 instead of 900 from floor

### **Grand Parade main entrance reception counter**

- F-6 max. height 1065 instead of 865
- F-7 clear height for knee space 660 instead of 685

### **Clerk's office reception counter level 2**

Request from Municipal Clerk's office that counter remain at height to preserve "privacy." Staff greet visitors from outside the counter. Public area is restricted to the doorway and seating. Thus, audit was not performed in inner office area, and barrier-free path of travel not established for wheelchair access. Clear width of opening into inner offices is 700. Recommend that audit proceed on as needed basis.

F-6 max. height of counter 1170 instead of 865

### **Section G. Barrier-Free Path of Travel - Interior Route**

The main corridors are wide and accessible and are interrupted only by fire extinguishers and drinking fountains.

#### **Floor 2**

G-10 Municipal Clerk's office, clear distance leading to inner offices to right of waiting area is 700 instead of 920, but not presently intended as BF path of travel

G-15 drinking fountain projects >100 between 680 and 1980 from floor

### **Section H. Elevator**

H-4 beep signals door to close, but no automatic reopening activator. Door slams hard on person in closing.

H-7 inside car size 1400 x 1230 instead of 1725 x 1300

H-8 min. dist. between back wall and door 1230 instead of 1370

H-16 no visual or audible indication that call is registered

H-19 indication characters on call buttons inside cab worn off (black on brass)

H-26 no flux coil on telephone

H-27 no volume control on telephone

H-28 no handrails on non-access walls

H-37 no audible signal when elevator stops

H-38 no floor indicator on side jambs, all levels

### **Section I. Stair or Stairwell**

Stair accessibility is not part of the NSBCR which addresses mainly wheelchair access.

Items in this checklist have been taken from CSA Standards, and Part 3 and 9 of the NBC in order to broaden the definition of "barrier-free" to include individuals who have visual or mobility conditions.

**Central Stair - floors 1 -2, 2-3, 3-4 (floor 1 is "basement")**

- I-11 no slip resistant nosing
- I-12 nosing not color contrasted
- I-17 handrail 110 instead of 30-50 (heritage style)
- I-19 handrail not continuous
- I-20 handrail not continuous around landing
- I-23 no detectable warning at top of stair
- I-25 no horizontal extension to handrail at top or bottom
- I-29 no Area of Refuge, fire and smoke separated
  
- I-14 stair 3-4 - handrail one side only instead of on 2 (width >1100)

**Section J. Washroom (with stalls)**

**Floor 1 women's**

- J-2 stall size 1380 x 1500 instead of 1500 x 1500
- J-8 outside door pull 90 instead of 140
- J-10 inside locking device not operable with one hand
- J-11 coat hook front wall instead of side, 1580 ht. instead of 1370 max.
- J-14 toilet tank top not attached - but adequately secured
- J-15 dist. from centreline of toilet and adjacent wall 420 instead of 460
- J-16 dist. from centreline of toilet and opposite wall or obstruct. 930 instead of 1030 min.
- J-18 toilet dispenser at 900 ht. front wall instead of 460-600 ht. side wall
- J-25 side grab bar extension in front of toilet 200 instead of 450
- J-40 top of lavatory 950 ht. instead of 865 max.
- J-47 lavatory drain pipe not insulated - but adequate knee space provided
- J-49 faucet handles round instead of lever type
- J-52 height to bottom of mirror 1220 instead of 1000
  
- DR-1 clear area in front of pull side of washroom door <1500x1500
- DR-7 excessive opening force required - difficult to open for frail or wheelchair user

**Floor 1 men's**

- J-2 stall size 1370 x 1480 instead of 1500 x 1500
- J-8 outside door pull 90 instead of 140
- J-10 inside locking device not operable with one hand
- J-11 coat hook front wall instead of side, 1580 ht. instead of 1370 max.
- J-12 top of toilet seat 490 from floor instead of 400-460 max.

- J-14 toilet tank top not attached - but adequately secured
- J-16 dist. from centreline of toilet and opposite wall or obstruct. 910 instead of 1030 min.
- J-18 toilet dispenser at 900 ht. front wall instead of 460-600 ht. side wall
- J-25 side grab bar extension in front of toilet 230 instead of 450
- J-29 height of urinal rim 530 instead of 488-512 max.
- J-34 no grab bars
- J-41 clear height under front of vanity 640 instead of 735 min.
- J-42 clear knee width under lavatory <750
- J-43 clear knee depth under lavatory <205
- J-44 clear knee height 205 back from front edge lavatory <685
- J-47 lavatory drain pipe not insulated - but adequate knee space provided
- J-49 faucet handles round instead of lever type
- J-52 height to bottom of mirror 1220 instead of 1000

- DR-1 push side of door: space beside latch <300  
pull side of door: space beside latch <600; clear area in front of door <1500x1500
- DR-7 excessive opening force required - difficult to open for frail or wheelchair user

### **Floor 2 women's**

- J-2 stall size 1400 x 1500 instead of 1500 x 1500
- J-8 outside door pull 90 instead of 140
- J-10 inside locking device not operable with one hand
- J-11 coat hook front wall instead of side, 1640 ht. instead of 1370 max.
- J-12 top of toilet seat 480 instead of 400-460 max.
- J-14 toilet tank top not attached - but adequately secured
- J-16 dist. from centreline toilet and opposite wall or obstruct. 1000 instead of 1030 min.
- J-18 toilet dispenser at 880 ht. front wall instead of 460-600 ht. side wall
- J-25 side grab bar extension in front of toilet 130 instead of 450
- J-40 top of lavatory 940 ht. instead of 865 max.
- J-47 lavatory drain pipe not insulated - but adequate knee space provided
- J-52 height to bottom of mirror 1240 instead of 1000

- DR-1 pull side of inner washroom door, space beside latch 560 instead of 600 min.
- DR-5 outer washroom door, round "heritage" type handle instead of lever type

### **Floor 2 men's**

- J-2 stall size 1390 x 1490 instead of 1500 x 1500
- J-8 outside door pull 90 instead of 140

- J-10 inside locking device not operable with one hand
  - J-11 coat hook front wall instead of side, 1580 ht. instead of 1370 max.
  - J-12 top of toilet seat 470 from floor instead of 400-460 max.
  - J-14 toilet tank top not attached - but adequately secured
  - J-16 dist. from centreline of toilet and opposite wall or obstruct. 900 instead of 1030 min.
  - J-18 toilet dispenser at 900 ht. front wall instead of 460-600 ht. side wall
  - J-25 side grab bar extension in front of toilet 130 instead of 450
  - J-29 height of urinal rim 630 instead of 488-512 max.
  - J-34 no grab bars
  - J-40 top of lavatory 915 ht. instead of 865 max.
  - J-41 clear height under front of vanity 640 instead of 735 min.
  - J-47 lavatory drain pipe not insulated - but adequate knee space provided
  - J-52 height to bottom of mirror 1260 instead of 1000
- 
- DR-1 pull side inner door: space beside latch 530 instead of 600  
pull side outer door: clear area in front of door <1500x1500
  - DR-5 outer washroom door, round "heritage" type handle instead of lever type
  - DR-7 inner and outer doors are heavy for frail or wheelchair user

**Floor 3 women's**

- J-2 stall size 1400 x 1500 instead of 1500 x 1500
  - J-8 outside door pull 90 instead of 140
  - J-10 inside locking device not operable with one hand
  - J-11 coat hook front wall instead of side, 1630 ht. instead of 1370 max.
  - J-12 top of toilet seat 480 instead of 400-460 max.
  - J-14 toilet tank top not attached - but adequately secured
  - J-16 dist. from centreline toilet and opposite wall or obstruct. 900 instead of 1030 min.
  - J-18 toilet dispenser at 900 ht. front wall instead of 460-600 ht. side wall
  - J-25 side grab bar extension in front of toilet <450
  - J-40 top of lavatory 885 ht. instead of 865 max.
  - J-47 lavatory drain pipe not insulated - but adequate knee space provided
  - J-49 faucet handles pivot type instead of lever
  - J-52 height to bottom of mirror 1240 instead of 1000
- 
- DR-11 door closing time <3 secs.
  - DR-5 outer washroom door, round "heritage" type handle instead of lever type

**Floor 3 men's**

- J-2 stall size 1400 x 1500 instead of 1500 x 1500
- J-8 outside door pull 90 instead of 140
- J-10 inside locking device not operable with one hand
- J-11 coat hook front wall instead of side, 1630 ht. instead of 1370 max.
- J-12 top of toilet seat 470 from floor instead of 400-460 max.
- J-14 toilet tank top not attached - but adequately secured
- J-16 dist. from centreline of toilet and opposite wall or obstruct. 960 instead of 1030 min.
- J-18 toilet dispenser at 900 ht. front wall instead of 460-600 ht. side wall
- J-25 side grab bar extension in front of toilet <450
- J-29 height of urinal rim 670 instead of 488-512 max.
- J-34 no grab bars
- J-41 clear height under front of vanity 710 instead of 735 min.
- J-47 lavatory drain pipe not insulated - but adequate knee space provided
- J-49 faucet handles pivot type instead of lever
- J-52 height to bottom of mirror 1240 instead of 1000
- DR-1 pull side outer washroom door space beside latch 380 instead of 600  
pull side inner washroom door space beside latch 450 instead of 600
- DR-8 clear space between doors in series <1200

**Floor 4 women's**

- J-2 stall size 1350 x 1500 instead of 1500 x 1500
- J-8 outside door pull 90 instead of 140
- J-10 inside locking device not operable with one hand
- J-11 coat hook front wall instead of side, >1370 max.
- J-12 top of toilet seat 485 instead of 400-460 max.
- J-14 toilet tank top not attached - but adequately secured
- J-16 dist. from centreline toilet and opposite wall or obstruct. <1030 min.
- J-18 toilet dispenser front wall instead of 460-600 ht. side wall
- J-25 side grab bar extension in front of toilet <450
- J-47 lavatory drain pipe not insulated - but adequate knee space provided
- J-49 faucet handles pivot type instead of lever
- J-52 height to bottom of mirror >1000
- DR-1 push side inner washroom door, space beside latch <300  
pull side inner washroom door 500 beside latch instead of 600  
pull side outer washroom door <600 beside latch
- DR-8 clear space between 2 doors in series <1200
- DR-11 door closing time <3 secs.

**Floor 4 men's**

- J-8 outside door pull 90 instead of 140
- J-10 inside locking device not operable with one hand
- J-11 coat hook front wall instead of side >1370 max.
- J-12 top of toilet seat 480 from floor instead of 400-460 max.
- J-14 toilet tank top not attached - but adequately secured
- J-16 dist. from centreline of toilet and opposite wall or obstruct. <1030 min.
- J-18 toilet dispenser >460-600 ht. side wall
- J-25 side grab bar extension in front of toilet <450
- J-29 height of urinal rim 660 instead of 488-512 max.
- J-31 clear floor width in front of urinal <800
- J-34 no grab bars
- J-47 lavatory drain pipe not insulated - but adequate knee space provided
- J-49 faucet handles pivot type instead of lever
- J-52 height to bottom of mirror >1000
  
- DR-1 pull side outer washroom door space beside latch <600; clear area in front of door 1450x1580 instead of 1500x1500  
pull side inner washroom door space beside latch 470 instead of 600
- DR-8 clear space between doors in series <1200

**Section L. Drinking Fountain**

**Floor 1**

- L-9 Clear ht. knee space 520 instead of 680
- L-15 Fountain projecting 200 into circulation route - not recessed

**Floor 3**

- L-15 Fountain projecting into circulation route - not recessed

**Section N. Other Employee/Public Area**

**Meeting Room (Council Chamber)**

The council chamber has been wired by the telephone pioneers with Aliant for assisted hearing, but as yet has never been tried.

**Section S. Signage**

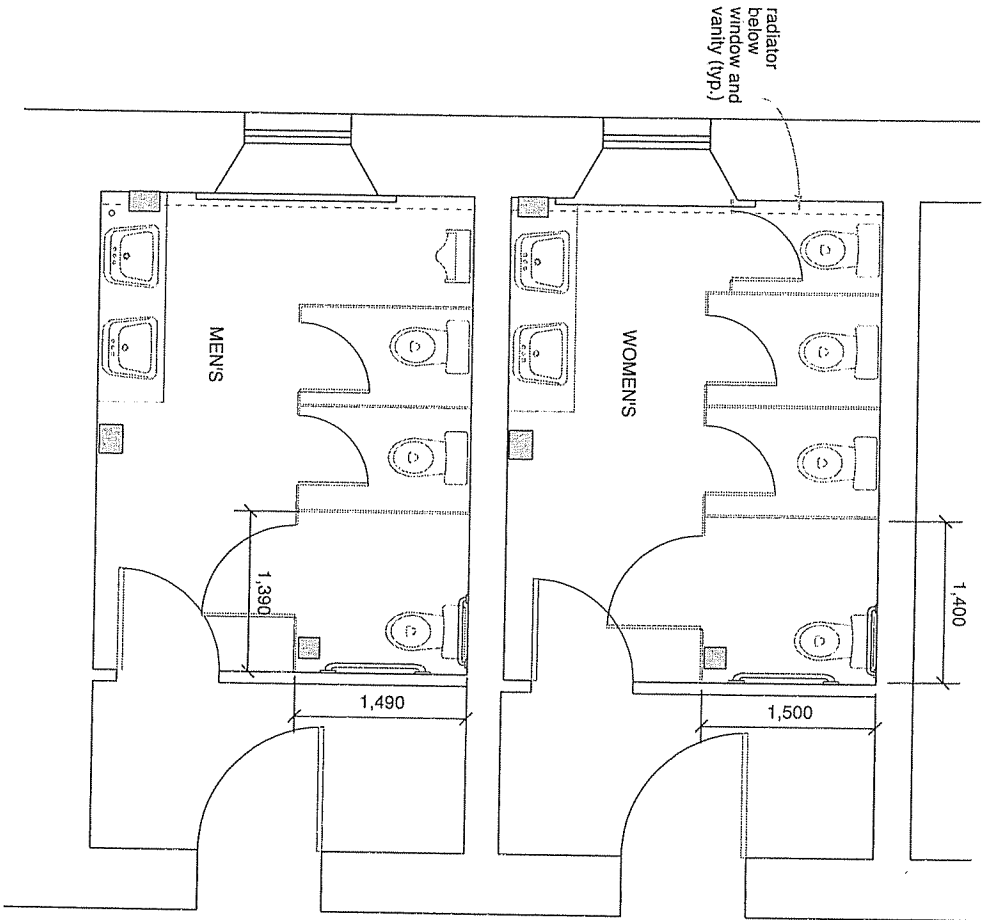
Signage is required to indicate the BF entrance or the Path of Travel leading to the entrance, and if not obvious, the location of elevator, BF washrooms, telephone, areas of refuge (if any), and means of egress.




S1-11

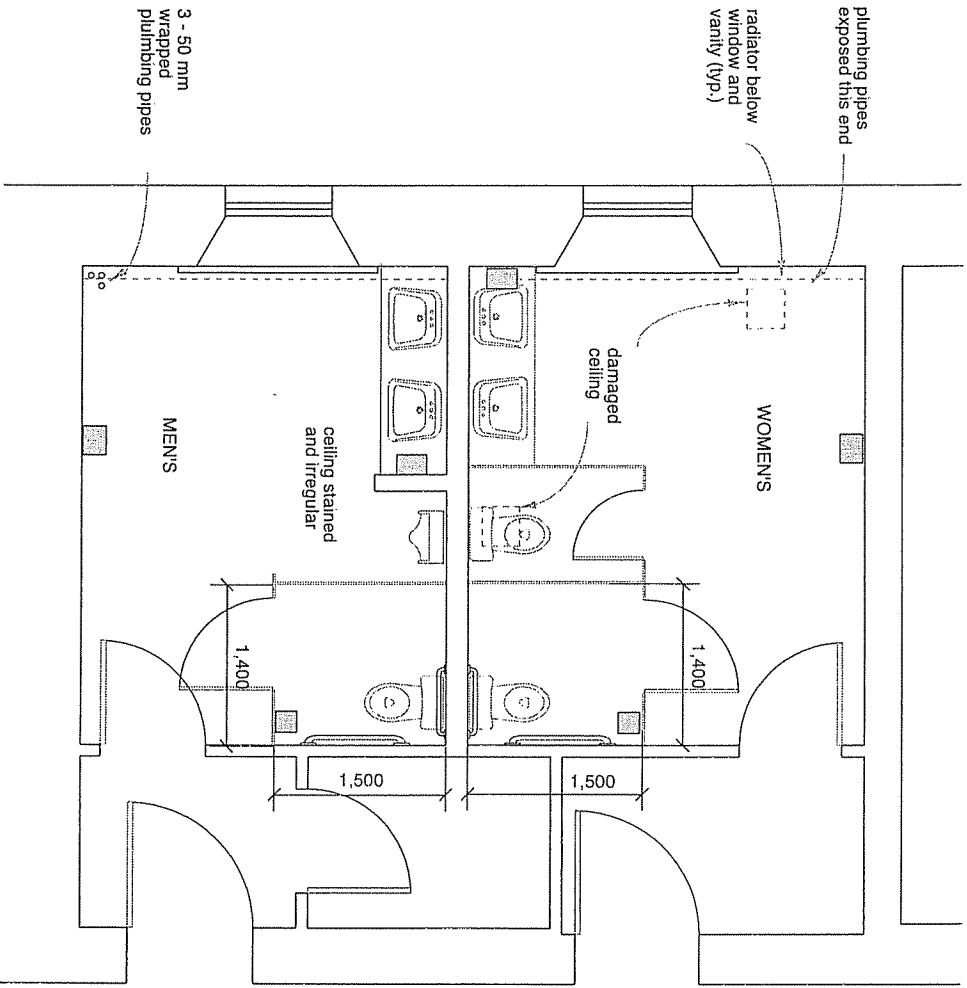
The only signage present for people with disabilities occurs near the main entrance indicating “Wheelchair Accessible Argyle Street Entrance.” At Argyle entrance, one sign directs visitors to the main door, a second hand drawn sign states: “Jan. 14/06. Notice - Only couriers, persons with disabilities is (sic) to use this door. All couriers must sign in at the front desk.”

A new sign as described in the NSBCR would be desirable to designate the BF entrance at Argyle.

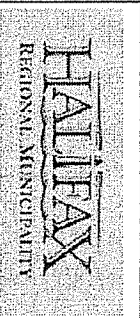


EXISTING WASHROOM PLAN - FLOOR 2

	
<b>Streetlines</b> <i>Architectural Services for Independent Living</i>	
Cynthia Steel, Architect, M.Sc. 1681 Fairbairn Road, Halifax, N.S. B3H 4B8 (902) 422-5484	
project <b>BF RENOVATIONS          HALIFAX OLD CITY HALL</b>	
dept. project no.	2070283084
title <b>EXISTING PLAN</b>	
date	14 MAR./06
scale	1:50
drawing	sheet
CHW1-EP.L2.0	A-1



EXISTING WASHROOM PLAN - FLOOR 3



**Streetlines**  
*Architectural Services for Independent Living*

Cynthia Street, Architect, M.Sc.  
 1681 Fairfield Road, Halifax, N.S. B3H 4B8  
 (902) 422-5484

project  
**BF RENOVATIONS  
 HALIFAX OLD CITY HALL**

dept. project no.  
**2070283084**

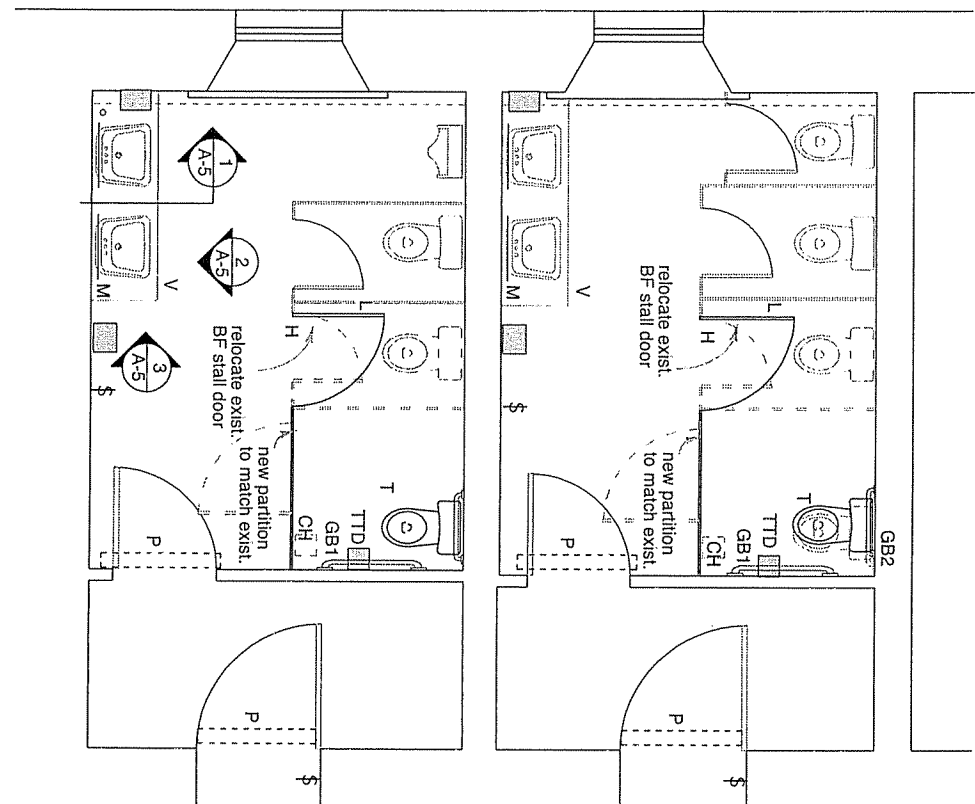
title  
**EXISTING PLAN**

date  
**14 MAR./06**

scale  
**1:50**

drawing  
**CHW/1-EPL3.0**

sheet  
**A-2**



WASHROOM PLAN - FLOOR 2

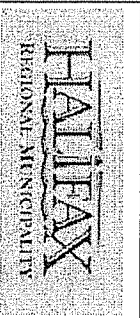
LEGEND

existing partition

to be removed

- T - remove existing toilet and provide new with top of toilet seat 400-460 above floor
- GB1 - replace angled grab bar with horizontal bar
- GB2 - relocated grab bar if necessary
- L - replace locking device with one handed slider type
- H - ensure gravity hinge allows door to close automatically
- CH - replace coat hook
- TTD - relocate toilet tissue dispenser
- M - existing mirror tilted out at top
- V - replace vanity, reinstall exist. sinks
- P - power operator inswing door
- ↔ - door actuator - wired for simultaneous operation of inner and outer door

NOTE: Make good all finish flooring, walls, ceiling where disturbed by renovation.



General contractor shall check/verify all dimensions and report any discrepancies before construction.

All work to be completed in accordance with the National Building Code of Canada and Local Building Regulations. Codes and regulations take precedence over drawings and descriptions if variances occur.

**Streetlines**  
Architectural Services for Independent Living

Cynthia Street, Architect, M.Sc.  
1481 Fairfield Road, Halifax, N.S. B3H 4E8  
(902) 422-5484

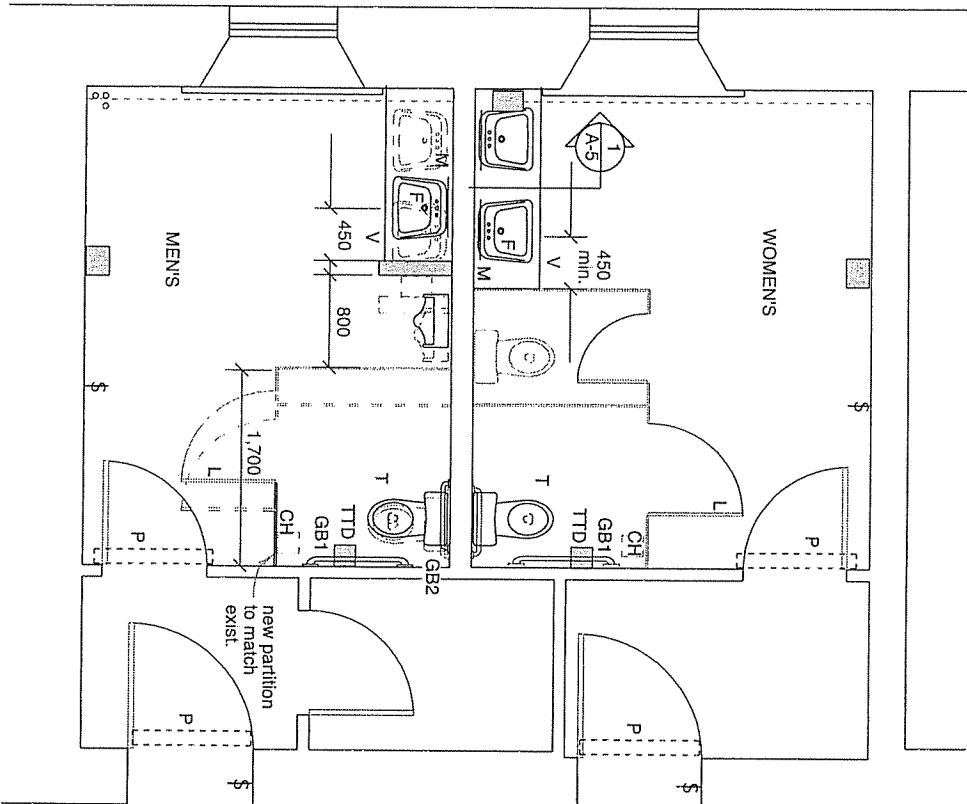
project  
BF RENOVATIONS  
HALIFAX OLD CITY HALL

dept. project no.  
2070283084

title  
PROPOSED PLAN

date	14 MAR./06	scale	1:50
------	------------	-------	------

drawing	CHW1-PL2.0	sheet	A-3
---------	------------	-------	-----



WASHROOM PLAN - FLOOR 3

- LEGEND**
- new partition
  - existing partition
  - - - - - to be removed
  - T - remove existing toilet and provide new with top of toilet seat 400-460 above floor
  - GB1 - replace angled grab bar with horizontal bar
  - GB2 - relocate grab bar if necessary
  - L - replace locking device with one handed slider type
  - CH - replace coat hook
  - TTD - relocate toilet tissue dispenser
  - M - existing mirror tiled out at top
  - V - replace vanity, reinstall exist. sinks
  - F - replace faucet with single lever type
  - P - power operator inswing door

↔ door actuator - wired for simultaneous operation of inner and outer door

NOTE: Make good all finish flooring, walls, ceiling where disturbed by renovation.

**NOTE TO COMMITTEE**

1. Women's barrier free stall partitions are to remain unchanged on floor 3, since conflict between inswinging room door and stall door does not occur here, as it does elsewhere. The existing 1400 dimension was considered to be adequate in this location since there will be and expanded stall in level 2 women's.
2. Renovations at this stage are primarily functional, due to budget constraints.



General contractor shall check/verify all dimensions and report any discrepancies before construction.

All work to be completed in accordance with the National Building Code of Canada, the current revision, and with Provincial and Local Building Regulations. Codes and regulations take precedence over drawings and descriptions if variances occur.

**Streelines**  
 Architectural Services for Independent Living

Gyuhia Steen, Architect, M.Sc.  
 1681 Fairfield Road, Halifax, N.S. B3H 4E8  
 (902) 422-5484

project  
**BF RENOVATIONS  
 HALIFAX OLD CITY HALL**

dept. project no.  
 2070283084

title  
**PROPOSED PLAN**

date	scale
14 MAR./06	1-50
drawing	sheet
CHW1-PL3.0	A-4



General contractor shall check/verify all dimensions and report any discrepancies before construction.

All work to be completed in accordance with the National Building Code of Canada, current revision, and with Provincial and Local Building Regulations. Codes and regulations take precedence over drawings and descriptions if variances occur.

**Streetlines**  
*Architectural Services for Independent Living*

Cynthia Street, Architect, M.Sc.  
 1681 Fairfield Road, Halifax, N.S. B3H 4E8  
 (902) 422-5484

project  
**BF RENOVATIONS  
 HALIFAX OLD CITY HALL**

dept., project no.  
 2070283084

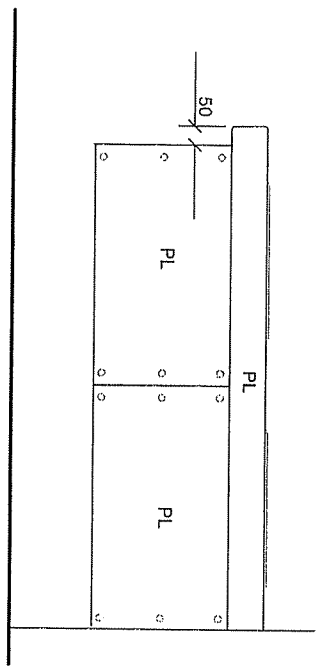
title  
**SECTION/ELEVATION  
 VANITY**

date  
 14 MAR./06

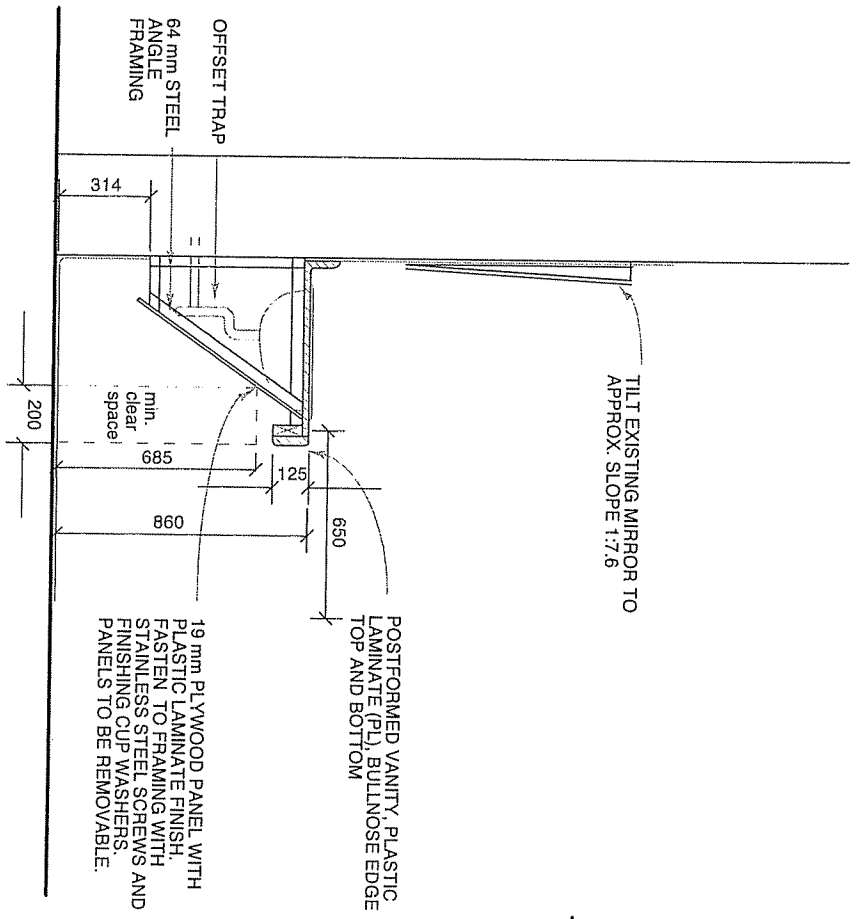
scale  
 1:20

drawing  
 CHW1-SE1.0

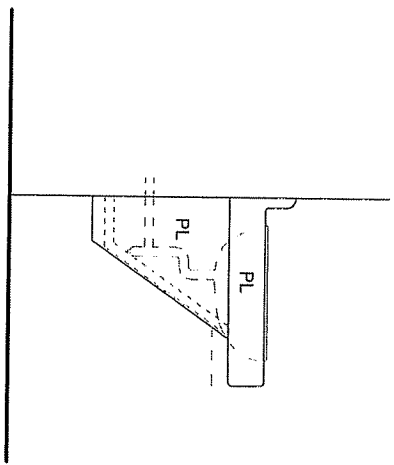
sheet  
 A-5



**2**  
**A-5**  
 FRONT ELEVATION - VANITY  
 SCALE 1:20

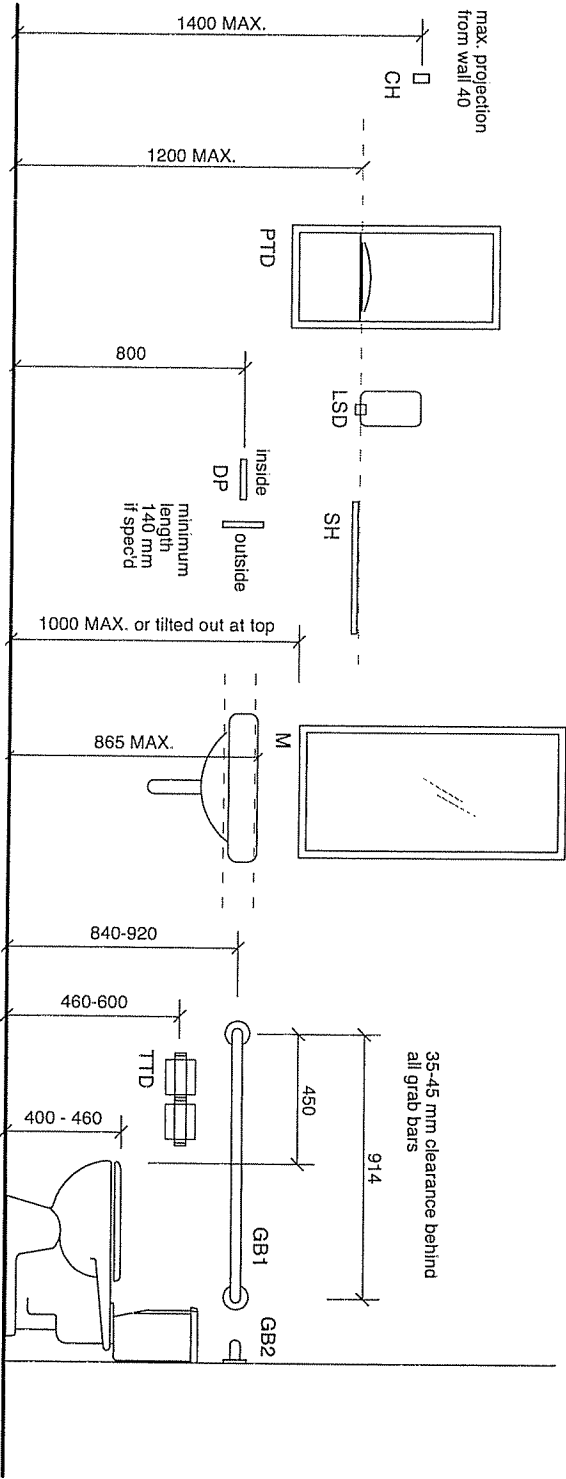


**1**  
**A-5**  
 SECTION - VANITY (typ.)  
 SCALE 1:20



**3**  
**A-5**  
 GABLE END - VANITY  
 SCALE 1:20

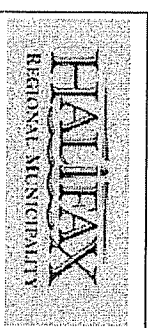
TYPICAL - WHERE GABLE END IS EXPOSED



1  
A-6 MOUNTING HEIGHTS FOR BARRIER-FREE INSTALLATION (TYP.)  
SCALE 1:20

SPECIFICATIONS

- CH CLOTHES HOOK
- DP DOOR PULL
- GB GRAB BAR
- LSD LIQUID SOAP DISPENSER
- M MIRROR
- PTD PAPER TOWEL DISPENSER
- SH SHELF
- TTD TOILET TISSUE DISPENSER



**Streetlines**  
Architectural Services for Independent Living

Cynthia Street, Architect, M.Sc.  
1681 Fairfield Road, Halifax, N.S. B3H 4E8  
(902) 422-5484

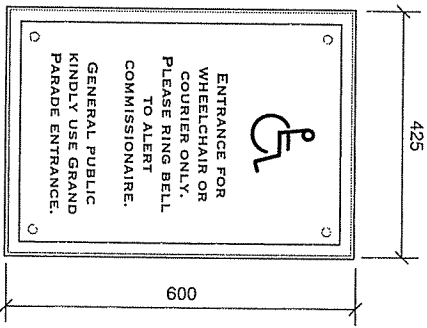
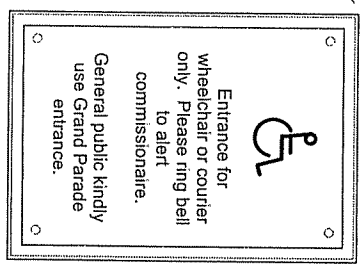
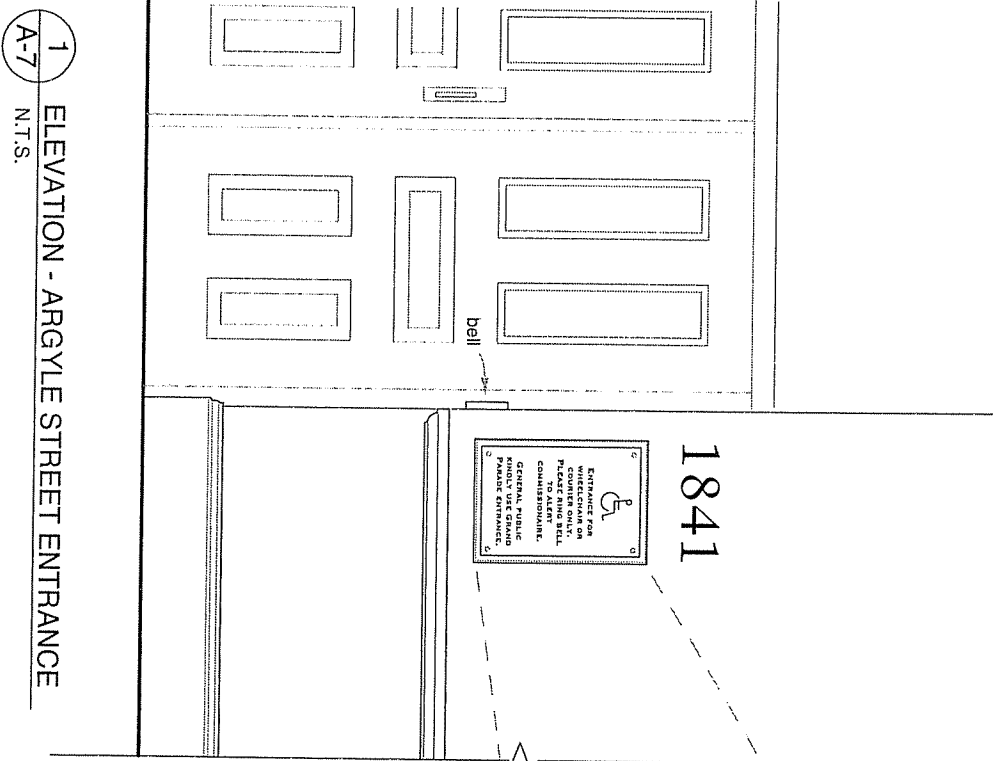
project  
BF RENOVATIONS  
HALIFAX OLD CITY HALL

dept. project no.  
2070283084

title  
ELEVATION - BF HEIGHTS

date	14 MAR./06	scale	1:20
------	------------	-------	------

drawing	CHW1-EL.1.0	sheet	A-6
---------	-------------	-------	-----



2  
A-7

SIGN OPTIONS  
SCALE 1:10

<p><b>Streetlines</b> Architectural Services for Independent Living</p> <p>Gymbia Street, Architect, M.Sc. 1661 Funded Road, Halifax, N.S. B3H 4E8 (902) 422-2484</p>	
<p>project <b>BF RENOVATIONS HALIFAX OLD CITY HALL</b></p>	
<p>dept. project no. <b>2070283084</b></p>	
<p>title <b>EXTERIOR SIGNAGE</b></p>	
date <b>14 MAR./06</b>	scale <b>AS NOTED</b>
drawing <b>CHW1-SN1.0</b>	sheet <b>A-7</b>