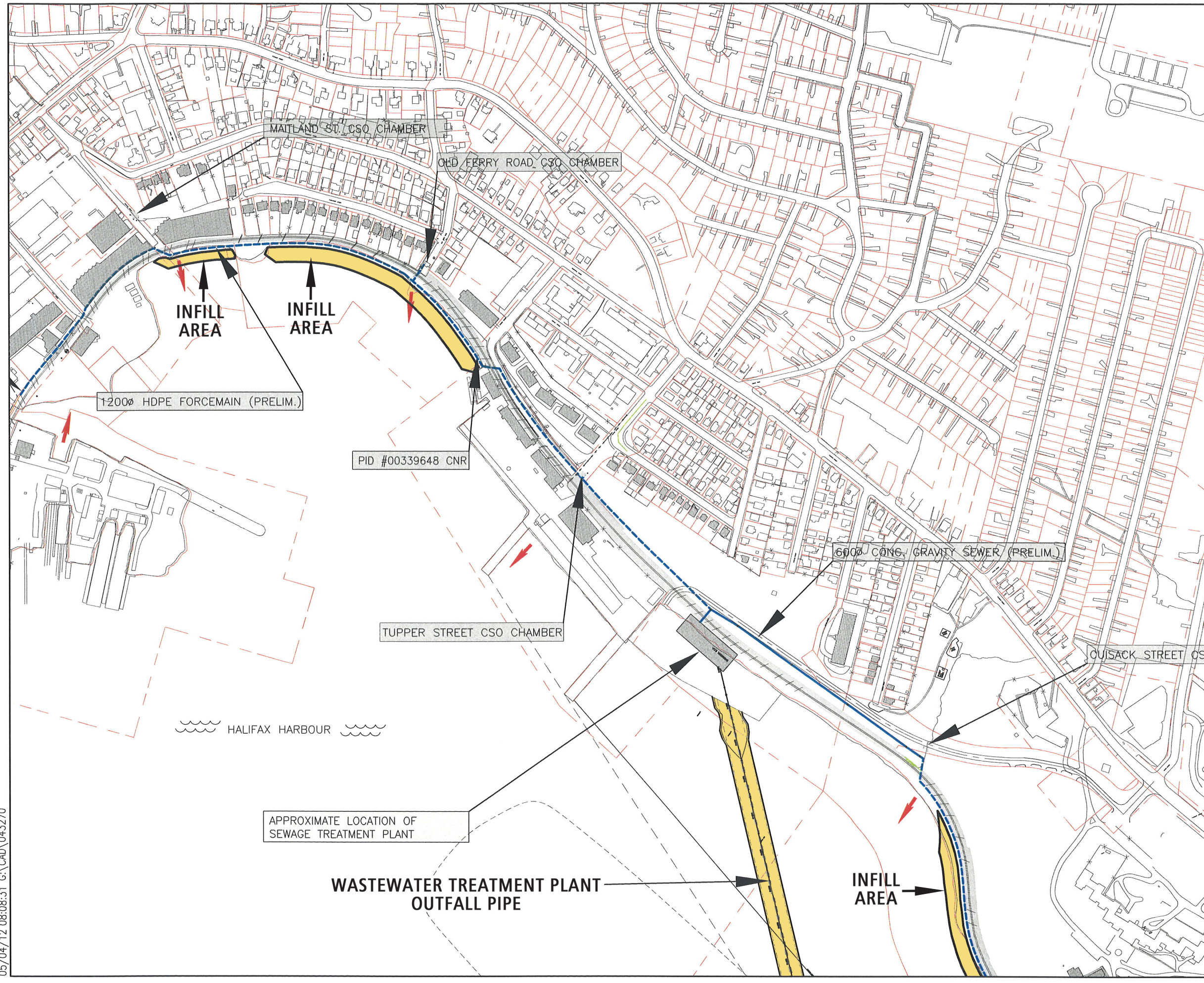


PLAN LEGEND

	EXISTING		PROPOSED
	SANITARY (GRAVITY)		SANITARY (FORCEMAIN)
	SANITARY (PRESSURE)		EXISTING COMBINED SEWER
	OVERFLOW/OUTFALL		INFILL AREA



HALIFAX
REGIONAL MUNICIPALITY

HALIFAX HARBOUR SOLUTIONS PROJECT

DEXTER | **harbour engineering**
INCORPORATED

INTERCEPTORS (DESIGN STATEMENT)
DARTMOUTH COVE TO CUISACK ST. CSO

Date: 05/01/06	Project No. 04-3270
Scale: 1:5000	Figure No. 3-3

INTERCEPTORS - GA.dwg
 05/04/12 08:08:31 C:\CAD\043270