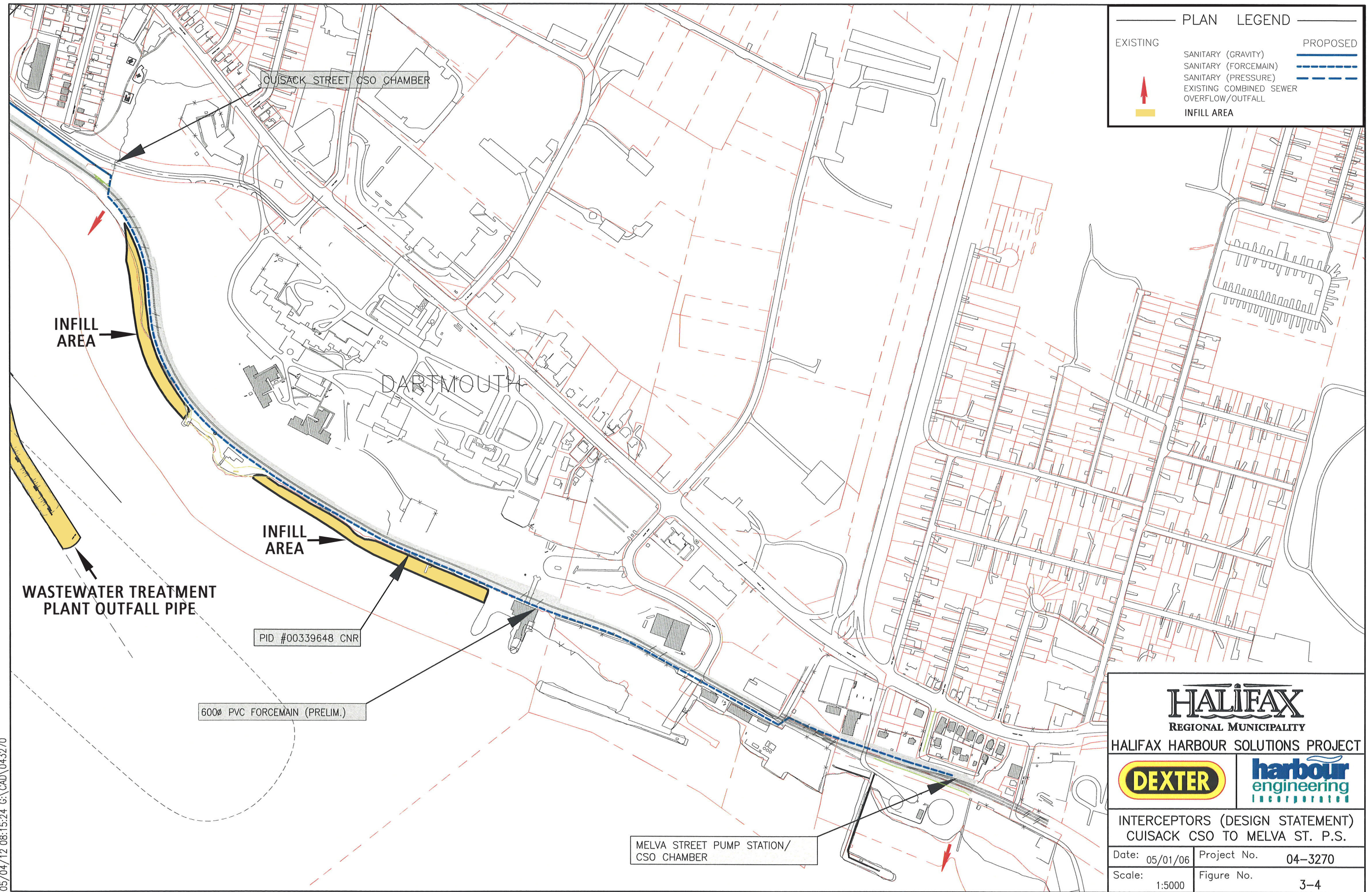


**PLAN LEGEND**

EXISTING	SANITARY (GRAVITY)	PROPOSED
	SANITARY (FORCEMAIN)	
	SANITARY (PRESSURE)	
	EXISTING COMBINED SEWER	
	OVERFLOW/OUTFALL	
	INFILL AREA	



INTERCEPTORS - GA.dwg  
 05/04/12 08:15:24 G:\CAD\043270

**HALIFAX**  
REGIONAL MUNICIPALITY

**HALIFAX HARBOUR SOLUTIONS PROJECT**

INTERCEPTORS (DESIGN STATEMENT) OUISACK CSO TO MELVA ST. P.S.	
Date: 05/01/06	Project No. 04-3270
Scale: 1:5000	Figure No. 3-4