

The background features a large, abstract geometric design. A dark blue triangle points downwards from the top left, meeting a lighter blue triangle that points upwards from the bottom left. These two triangles meet at a point in the center-right of the image. The top right and bottom right areas are solid dark blue. The word "HALIFAX" is written in white, bold, sans-serif capital letters in the top right dark blue area.

HALIFAX

Making Connections:

2014-19 Halifax Active Transportation Priorities Plan

Presentation to Transportation Standing
Committee

July 23, 2014

Presentation Overview

- 1) Background
- 2) Stakeholder and Public Engagement
- 3) AT Progress since 2006
- 4) Priorities for 2014-19
 - i. Walking
 - ii. Bicycling
 - iii. Multi-use Facilities
 - iv. Safety and Promotion
- 5) Implementation, Monitoring and Evaluation



Planning Framework

HRM Regional Plan (RP+5)

Transportation Plan

Road
Network

Transit

TDM

Parking

Active
Trans-
portation

Objectives of the Active Transportation Functional Plan (2006)

1. Establish a complete, integrated and readily accessible region-wide network
2. Double mode share for walking and bicycling (by 2026)
3. Promote, Educate, and Support AT

The *2014-19 Halifax AT Priorities Plan* maintains these objectives.



Objectives of the AT Plan Review

1. Engage stakeholders and the public to find out what is working and also where they feel the gaps are;
2. Review progress since the 2006 plan was approved;
3. Set priorities for the next five years.



Objective 1:

Engage Stakeholders and Public

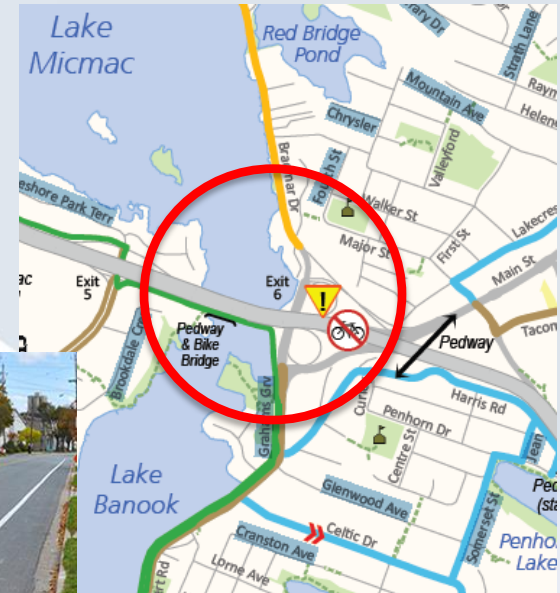
- Input from 800 residents (via six open houses and an online survey).
- Stakeholders: internal HRM, Province, non-profit organizations, community groups, businesses, others.



Objective 1: Engage Stakeholders and Public

Public priorities include:

- Facilities for all ages / abilities
- Connectivity
- More greenways
- More bicycle lanes
- Enforcement / maintenance
- Programs and events
- Specific projects and areas



Objective 2: Review progress since 2006

Goal: Complete AT Network:

AT Infrastructure Type	Amount (km) 2006	Amount (km) 2013
Sidewalk	See note*	878
Bicycle Lane	14	105
Greenway	68	135

- *4km/ year have been built by HRM; additional gained in new subdivisions.*
- significant growth in number of kilometers of facilities.
- many of these facilities are disconnected.

Objective 2:

Review progress since the 2006

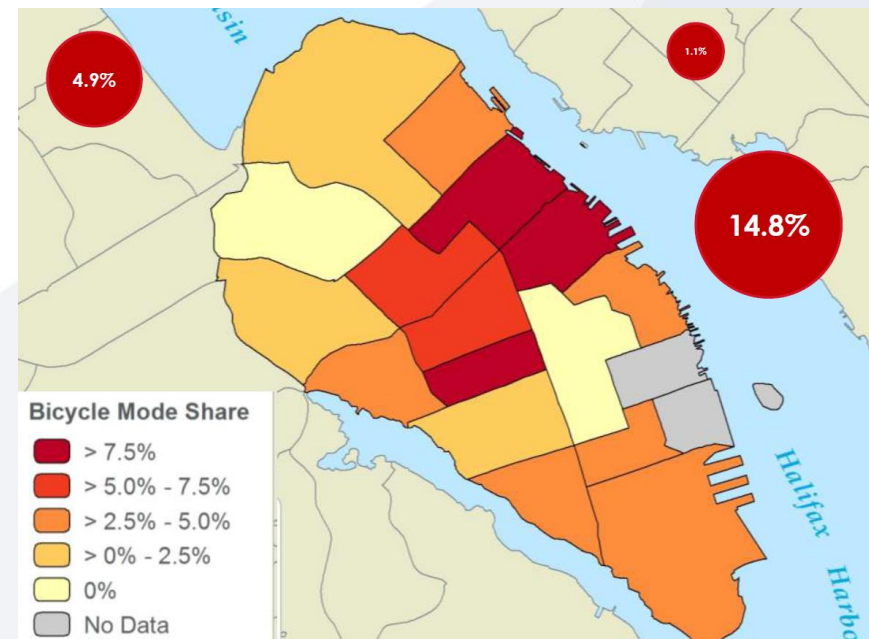
Goal: Double AT Modal Share:

- Very high AT mode share on the peninsula.
- Need a new way to evaluate AT mode share change for 2014-19.

Walking modal share to work (Census)

Community	1996	2001	2006	2011
Halifax Chebucto	25.8	27.2	30.4	26.4
Halifax Citadel	49.6	52.4	54.6	48.5
Halifax Needham	30.3	34.4	33.5	26.9

Bicycling modal share to work (2011 Census)



Objective 3:

Set priorities for the next five years

AT Priorities 2014-19: Introduction

This Plan:

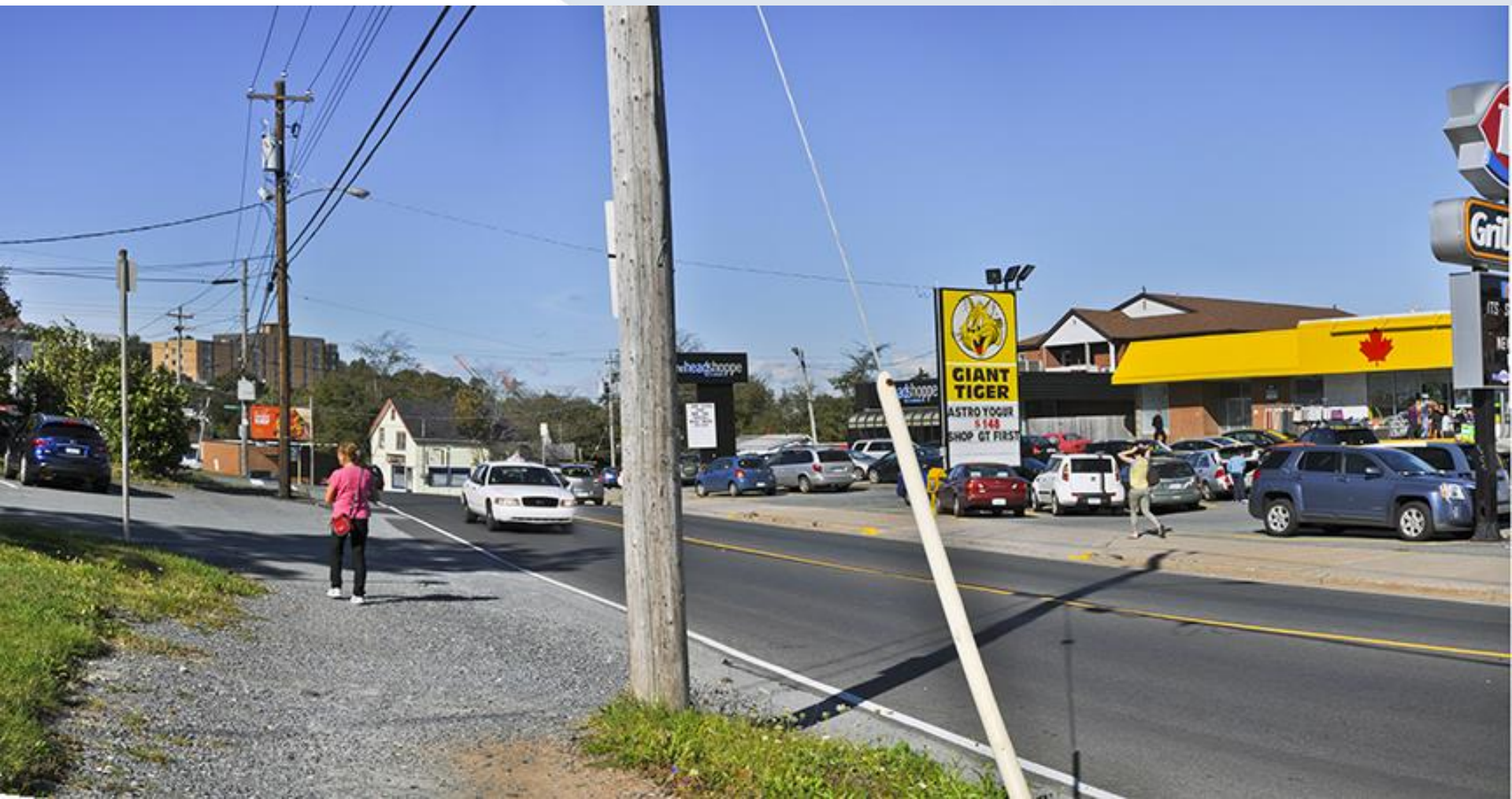
1. Proposes strategic direction, but **does not request approval to implement specific projects, policies or budgets.**
2. Enhances 2006 Functional Plan by:
 - providing clear implementation plan and targets;
 - focusing on network connectivity; and,
 - proposing proactive approach to AT facility development.

Walking

- 15 strategic recommendations
- \$19 million over five years
- Specific targets to carry out the recommendations



Walking



HALIFAX

Sidewalks on busy urban roads with transit

Walking



Rural pedestrian program

HALIFAX

Walking



Accessibility, Walkability, and Community Design **WALKMAX**

Bicycling

- 15 strategic recommendations
- \$6.5 million over five years
- Specific targets to carry out the recommendations



Bicycling

- Connect fragments
- Facility types that appeal to novices

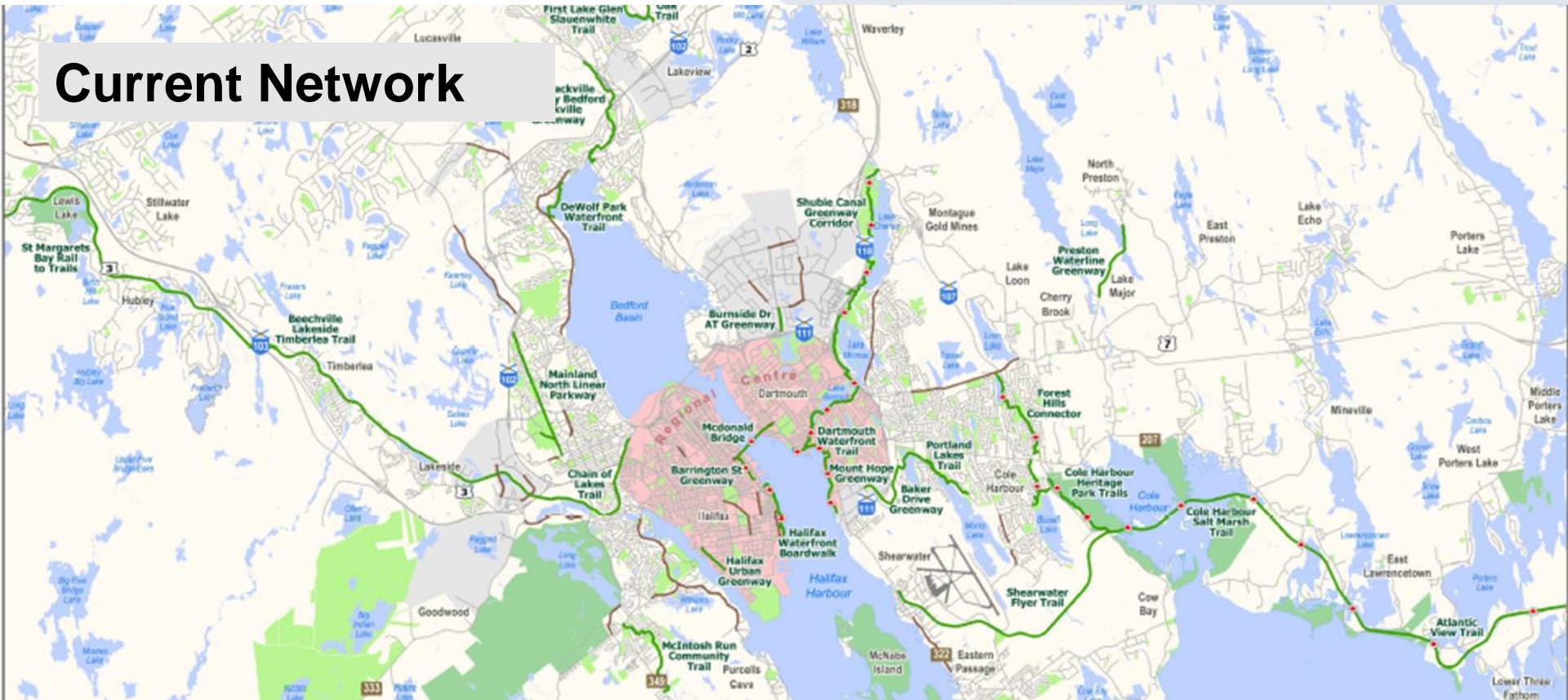


Focus on new cyclists

HALIFAX

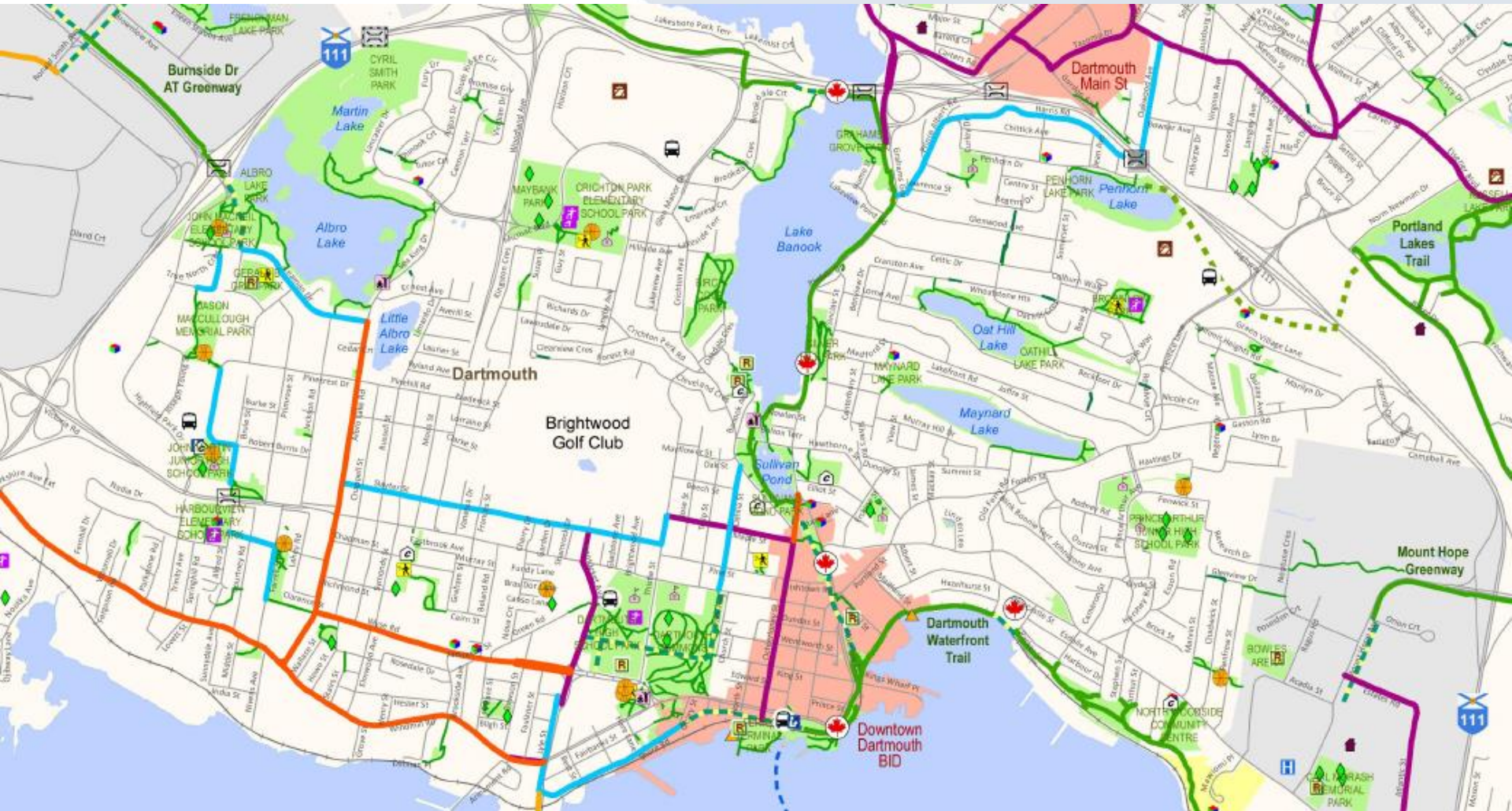
Bicycling

Current Network



HALIFAX

Bicycling



Regional Centre Bike Network

Bicycling



Regional Centre Bike Network

Bicycling

Outside the Regional Centre



- **Connections to Local Destinations**
- **Connecting Fragments**

HALIFAX

Bicycling



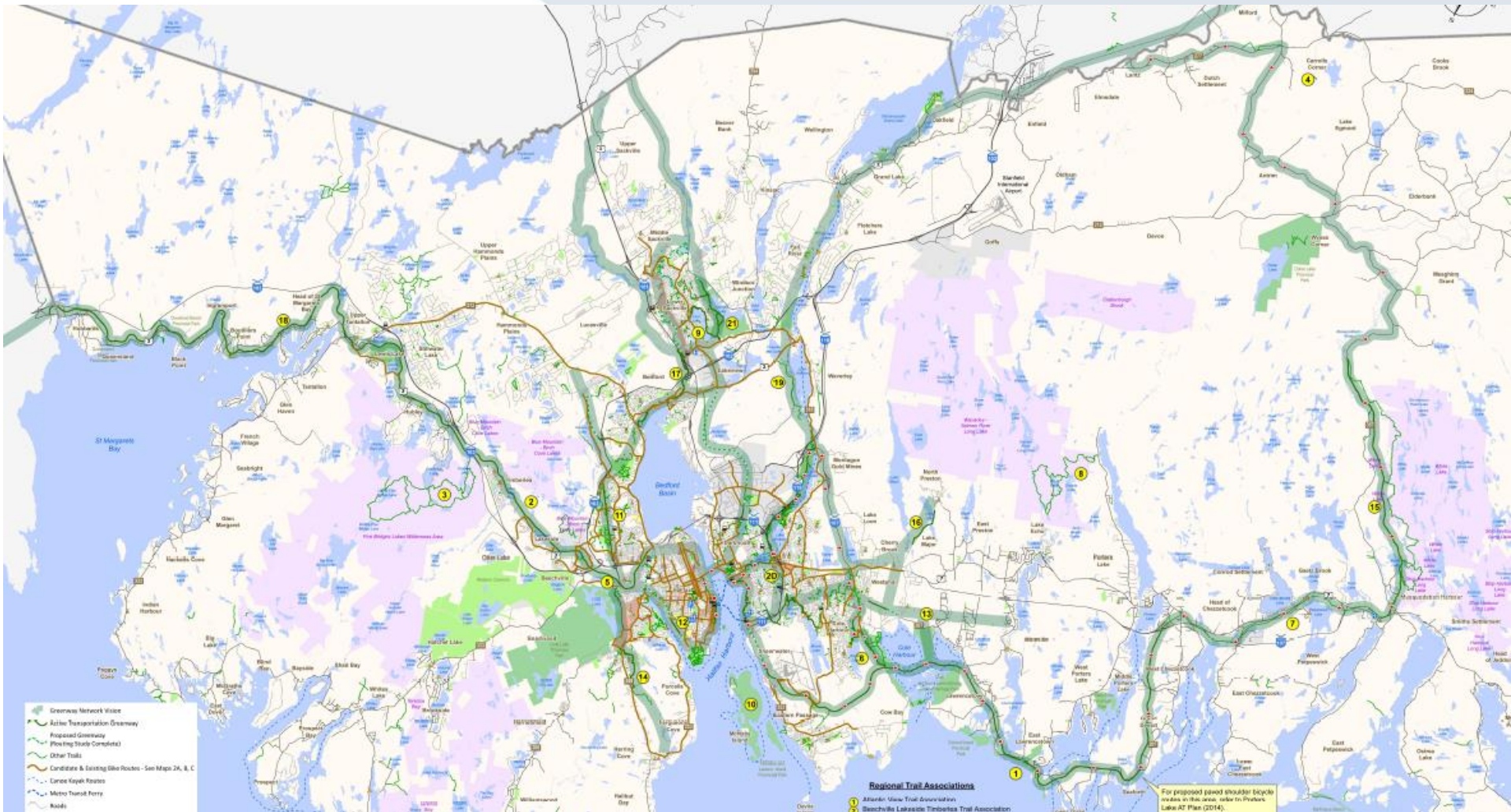
HALLOW

Multi Use Facilities

- 9 strategic recommendations
- \$17 million over five years
- Specific targets to carry out the recommendations



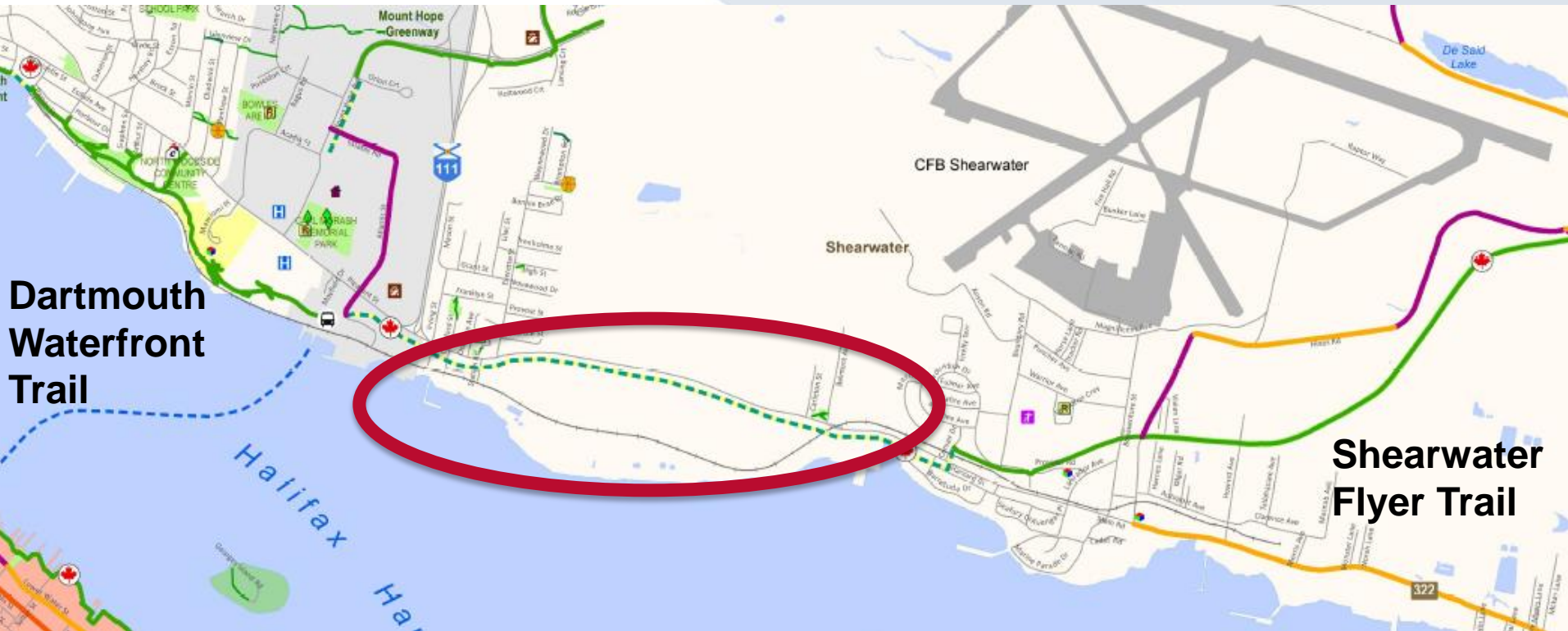
Multi-Use Facilities



HALIFAX

Endorse the Regional Greenway Vision

Multi-Use Facilities



**Dartmouth
Waterfront
Trail**

**Shearwater
Flyer Trail**

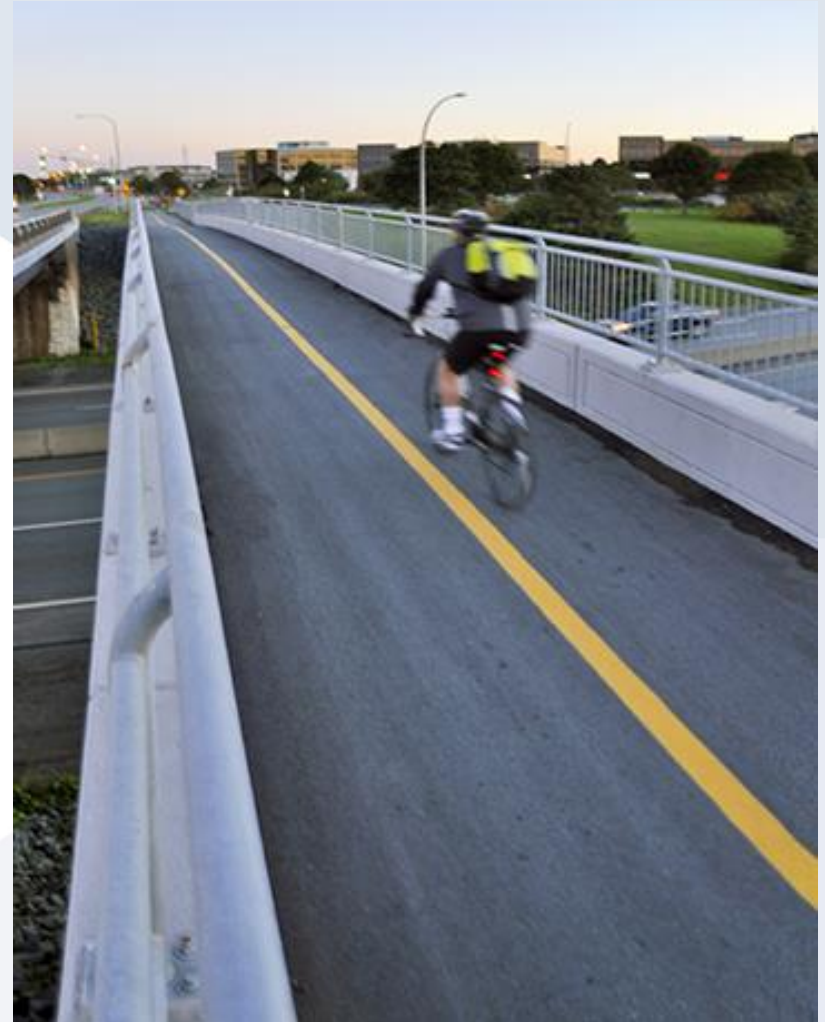
**Connect Greenway Trails
(To each other and also to surrounding communities)**

HALIFAX

Multi-Use Facilities

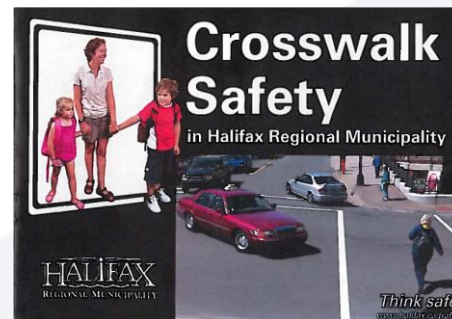
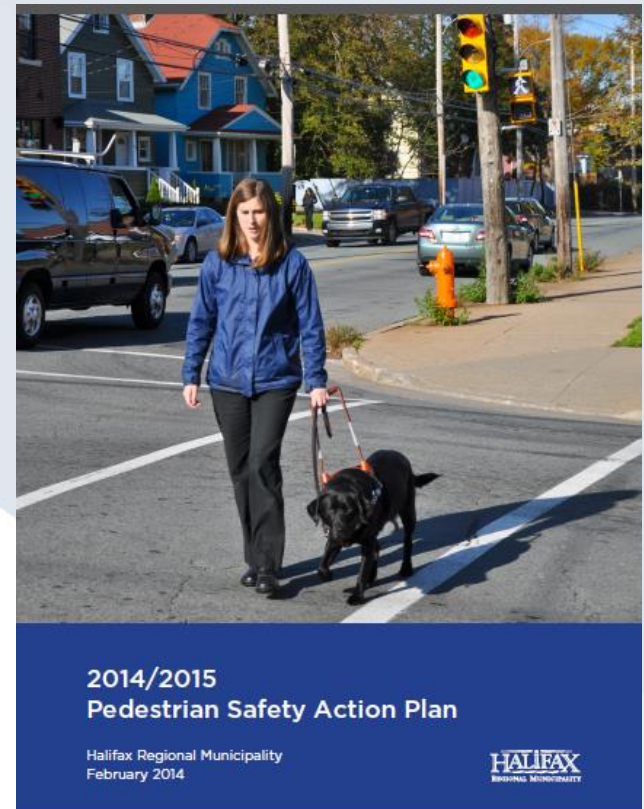


Multi-Use Facilities



AT Priorities 2014-19: Safety and Promotion

- AT events.
- Support safety education and skills training/ review current approach.
- Pedestrian Safety Action Plan.
- Monitoring of collisions and impacts.



Implementation

- Priority projects and “Class D” budgets identified.

Infrastructure Type	Proposed Capital 2014 - 2019
Walking	\$19 million
Cycling	\$6.5 million
Multi-Use	\$17 million
Total	\$42.5 million

- 2014-15 approved capital budget for new active transportation facilities is \$3,850,000
 - \$2,000,000 sidewalks
 - \$1,000,000 AT Plan Implementation
 - \$850,000 Trails (AT Greenway)

Monitoring and Evaluation

- Targets set for
 - establishing the network;
 - change in modal share;
 - support facilities; and,
 - programs and events.
- HRM origin and destination study to evaluate mode share change.



Halifax “AT” Vision for the Future

Urban



Suburban



Rural



Making Connections: 2014-19
Halifax Active Transportation
Priorities Plan

July 23, 2014

HALIFAX

Thank You



July 23, 2014

HALIFAX