



Budgetary Overview

As of November 17th, 2014, compensation should be at approx. 59.00 percent, while revenue and all other expenses should be at approx. 60.92 per cent.

- Revenue – 63.86 per cent.
- Compensation overall (including overtime) – 56.57 per cent. Overtime – 69.64 per cent.
- All other expenses – 68.94 per cent.
- Net Budget overall – 57.57per cent.

Upcoming Events

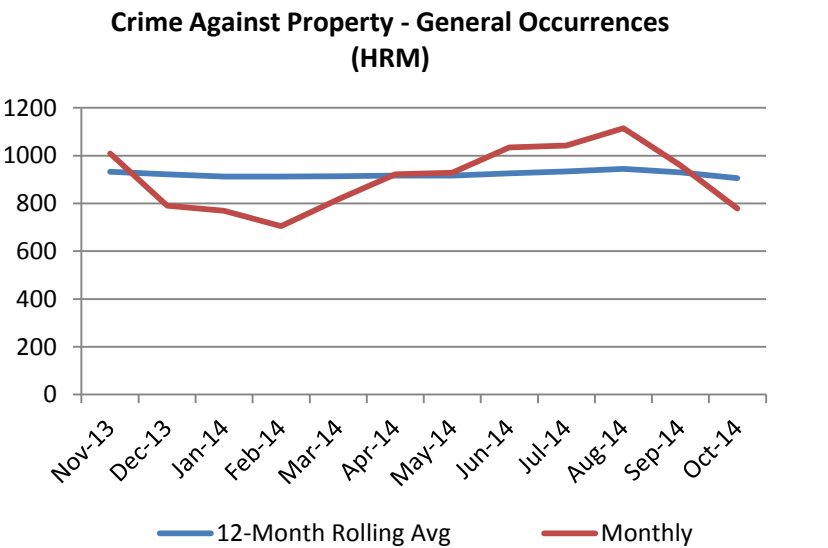
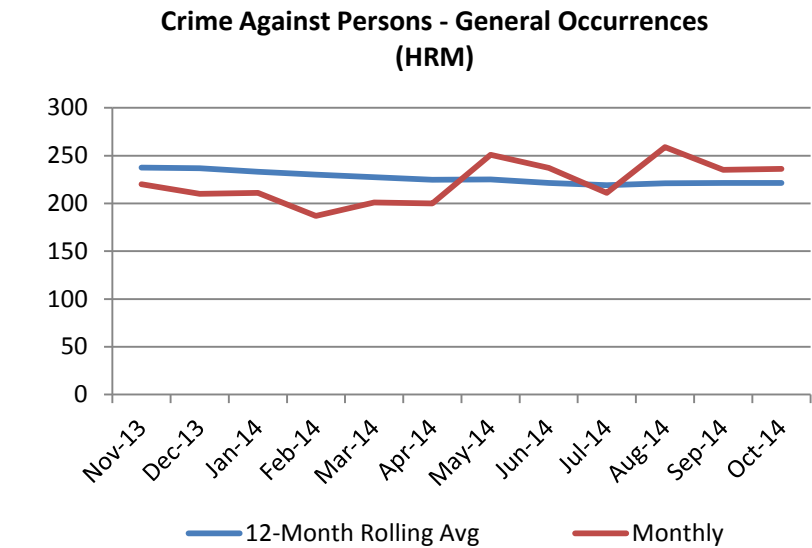
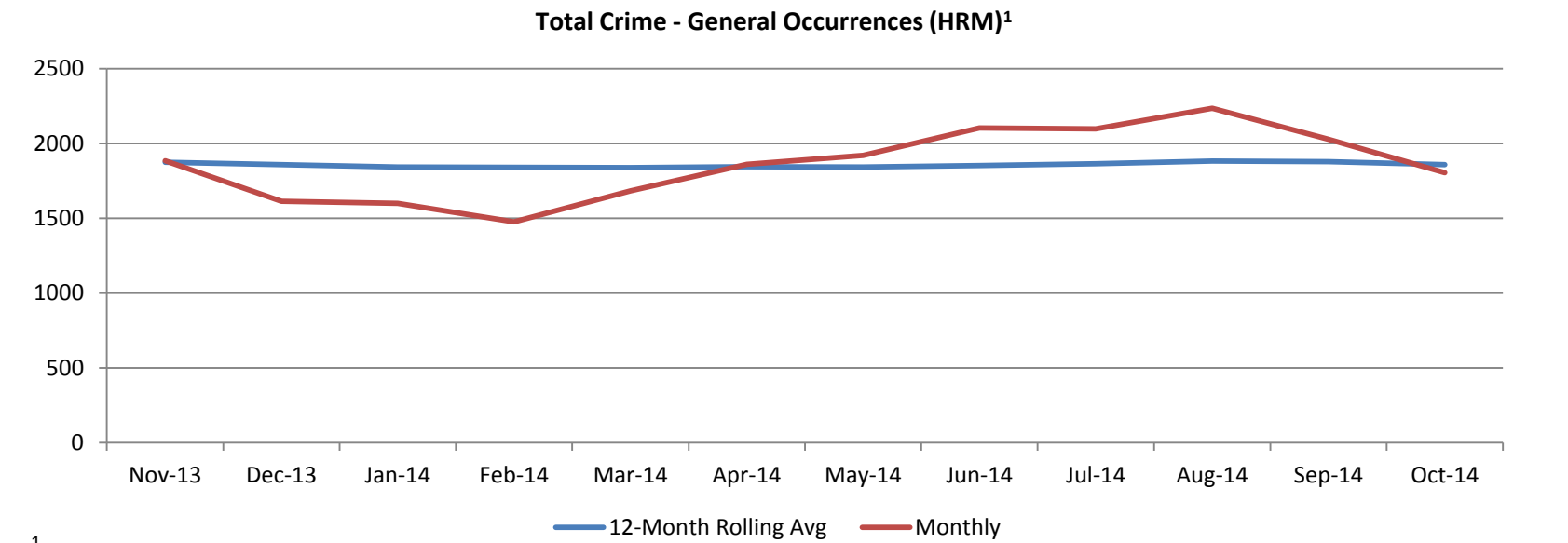
November 1 to 30 - National Community Safety and Crime Prevention Month

To mark the month, we'll be sharing our Top Ten Crime Prevention Tips with citizens via our web and social media sites. We'll also be offering up an officer from our Community Relations and Crime Prevention Section for media interviews.

November 25 to December 10 - The 16 Days of Activism Against Gender Violence

November 25 is the International Day for the Elimination of Violence Against Women. It marks the first day of the 16 Days of Activism Against Gender Violence, and December 10 – International Human Rights Day – is the final day. As part of the 16 Days of Activism Against Gender Violence, Canada commemorates National Day of Remembrance and Action on Violence Against Women on December 6 to mark the anniversary of the murder of 14 young women at École Polytechnique de Montréal in 1989.

Crime Trends – HRM Wide



* Above charts represent primary offences.

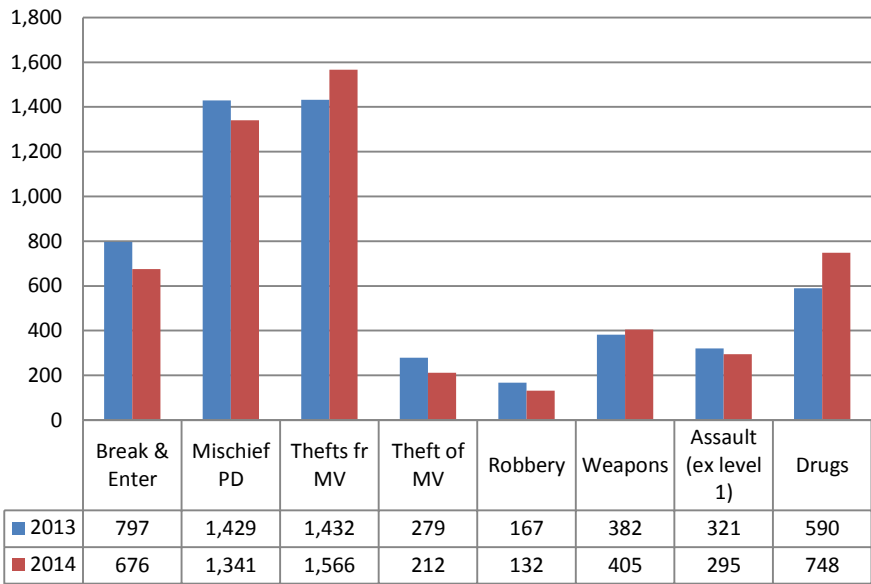


HRM Board of Police Commissioners Monthly Dashboard: November 17, 2014

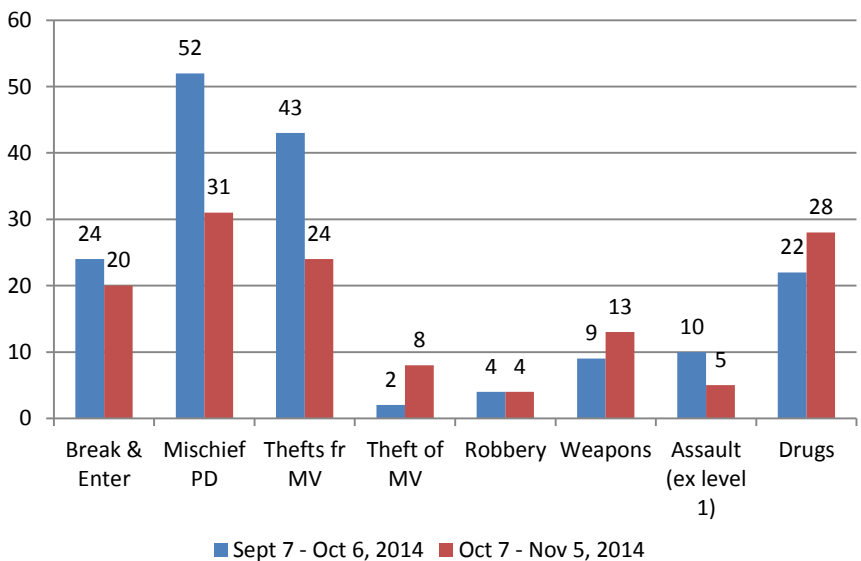
Comstat Incidents - HRP

Comstat Overview

HRP Comstat - General Occurrences (Jan. 1 to Nov. 5)



Central Division - Comstat General Occurrences



Comstat incidents comprise break and enters, mischief property damage, thefts from vehicles, thefts of vehicles, robbery, weapon-related offences, assault causing bodily harm, assault with a weapon, aggravated assault and drug-related offences.

Central Division

Central Division had 133 Comstat related events from Oct 7-Nov 5. Total Property Offences accounted for 83 incidents (62%) while Total Persons Offences accounted for 50 incidents or (38%). Proactive focus at this time is directed at the Spring Garden Rd/Salter St areas and Brunswick St East to Hollis St. This area has been subject to a variety of incidents including weapons, theft of motor vehicle, mischief, drug, and break and enters. There was a theft of a large piece of machinery from a construction site in the downtown area, item valued at \$40,000.00.

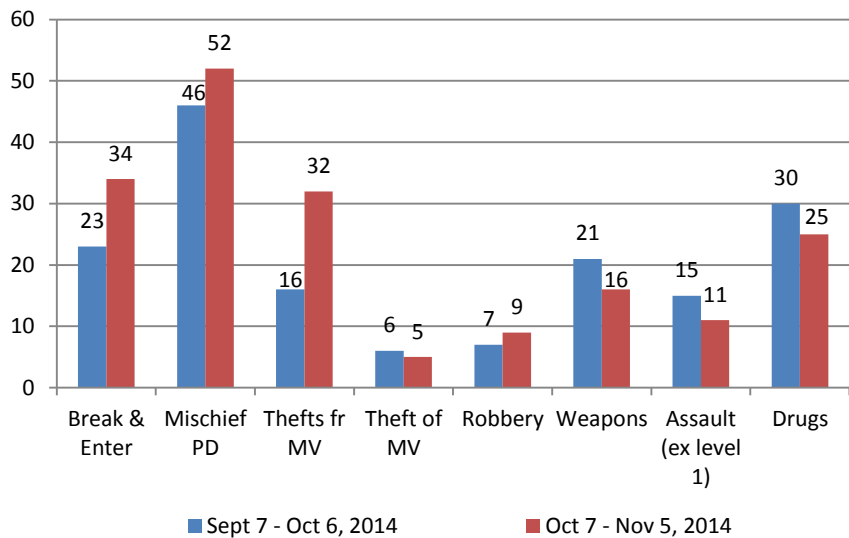
East Division

East Division had 184 Comstat related events from Oct 7-Nov 5. Total Property Offences accounted for 123 incidents (67%) while Total Persons Offences accounted for 61 incidents (33%). Four arsons were reported between Oct 25-Oct 30. Between Oct 16-Oct 24 a notable theft occurred at 41 Borden Ave. in which construction type machinery was taken, valued at approx. \$40,000.00. Several incidents relating to theft of tires from dealerships have been noted since September. This was a previous issue in winter of 2014. Several current Comstat targets were arrested in relation to break and enters. Proactive focus continues in North End Dartmouth in relation to property crime.

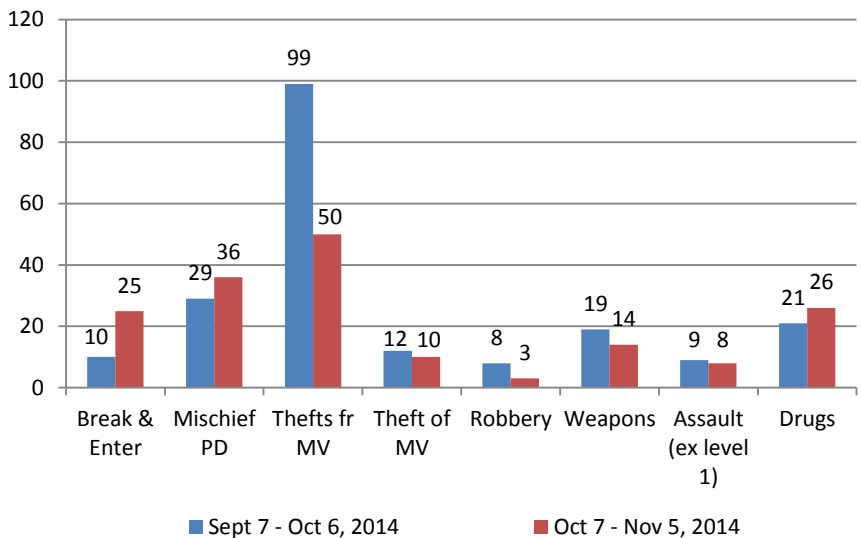
West Division

West Division had 172 Comstat related events from Oct 7 - Nov 5. Total Property Offences accounted for 121 incidents (70%) while Total Persons Offences accounted for 51 incidents (30%). This period saw a decrease in theft from motor vehicle incidents with the arrest of several targets. There was also a slight increase in breaks, some as a result of a lone male hitting numerous homes on the same day. With the assistance of the public the male was apprehended and charged. Proactive focus continues in the Paper Mill Lake area in Bedford and the Dawn St area in Fairview.

East Division - Comstat General Occurrences



West Division - Comstat General Occurrences



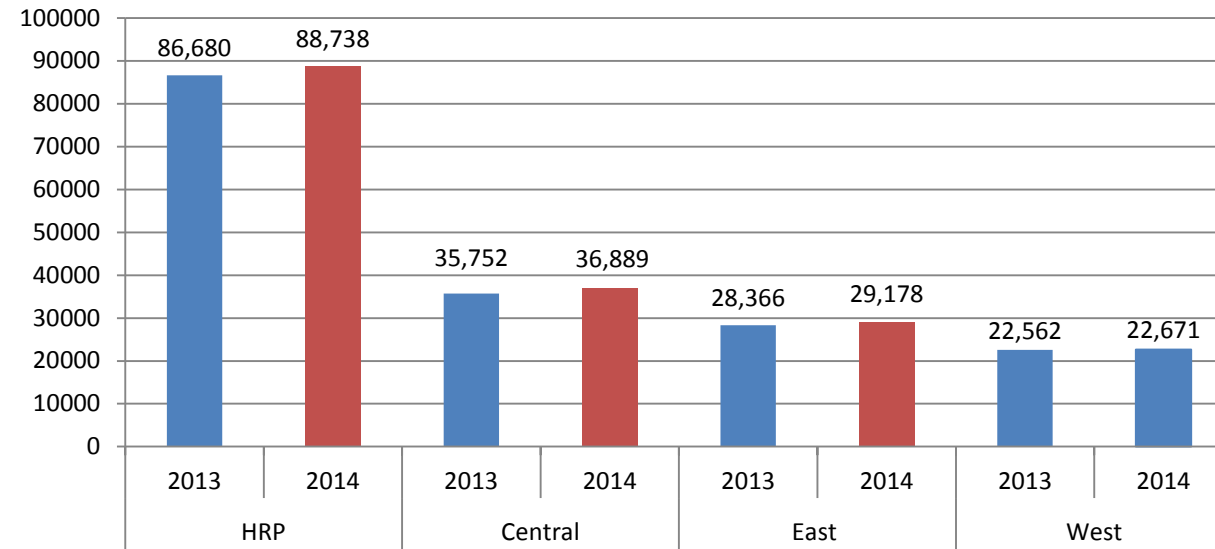
* Above charts represent primary offences.



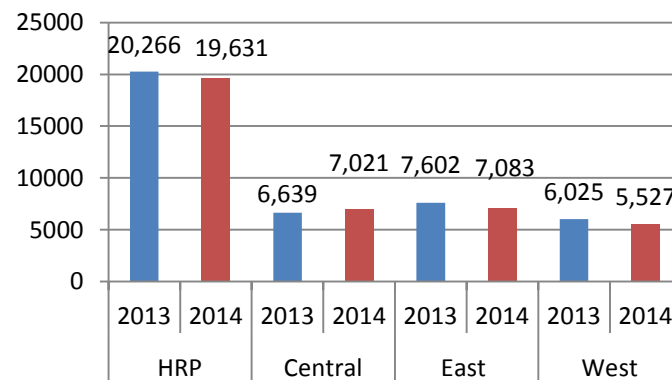
HRM Board of Police Commissioners Monthly Dashboard: November 17, 2014

Calls for Service - HRP

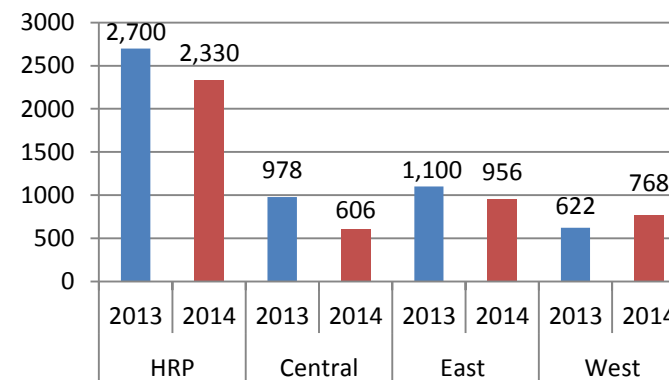
HRP Calls for Service Jan. 1 - Nov. 5
(excluding Traffic Stops & Proactive Assignments)



Traffic Stops Jan. 1 - Nov. 5

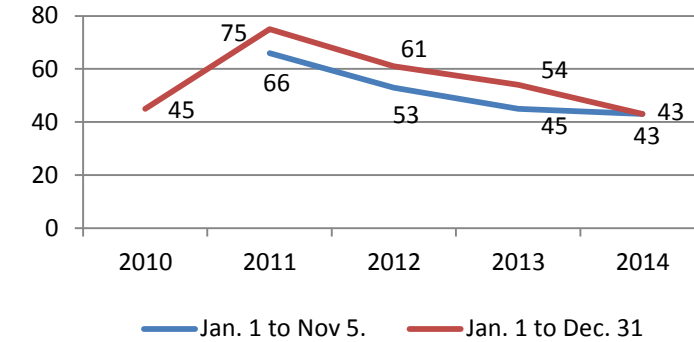


Proactive Assignments Jan. 1 - Nov. 5



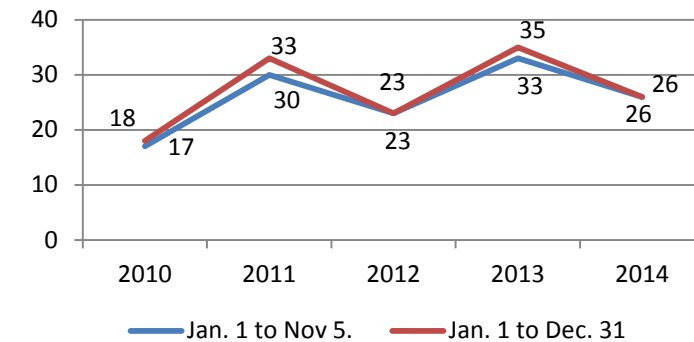
Firearms & Homicides – HRM Wide

Firearms Discharged



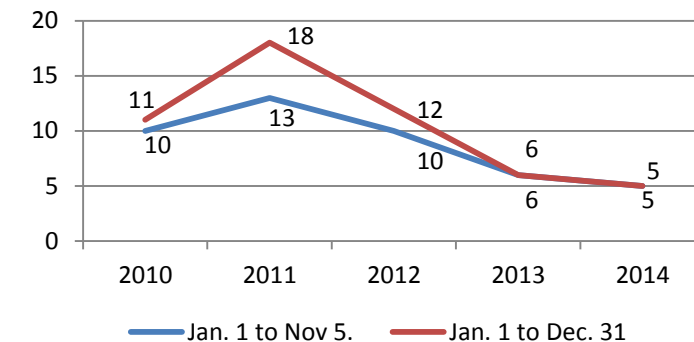
2010 stats do not include discharges from pellet guns

Attempted Homicides



Error rate +/- 1 due to reclassification after data extraction

Homicides



2013 stats do not include 2 motor vehicle-related deaths