



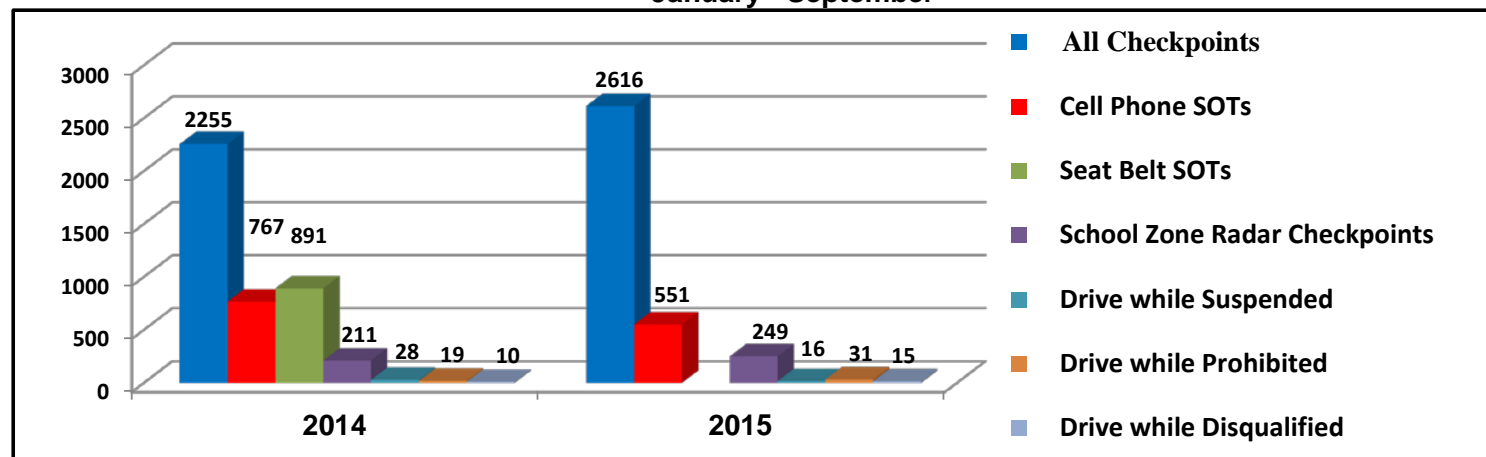
Hfx. District - Board of Police Commissioner's Dashboard - October 16th, 2015

Item No. 7.1.3

January 1st - September 30th, 2014 - 15 Comparison

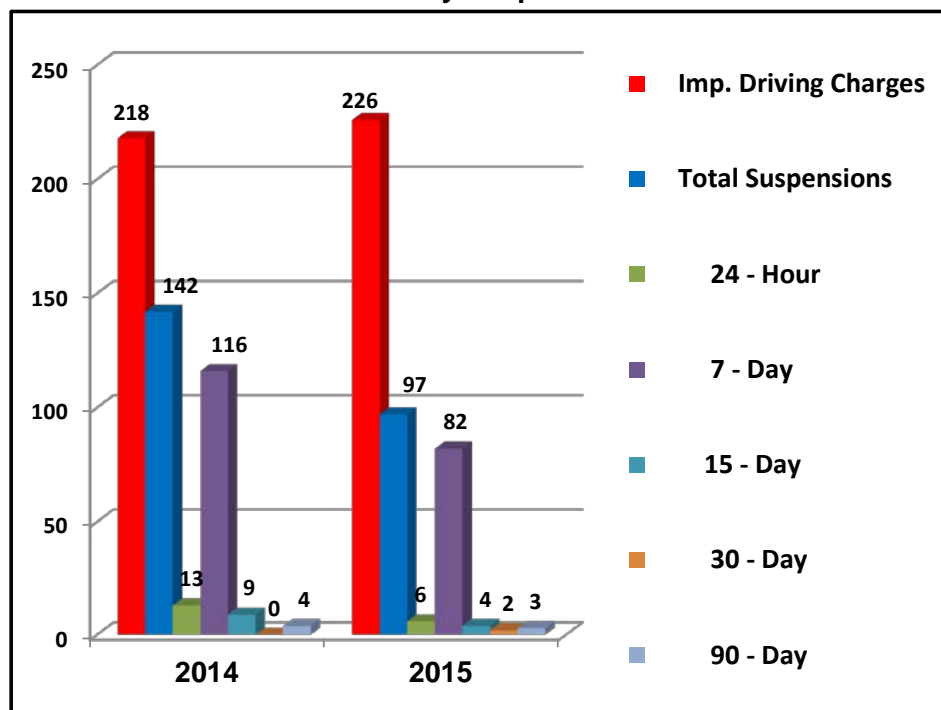
Road Safety Initiatives

January - September



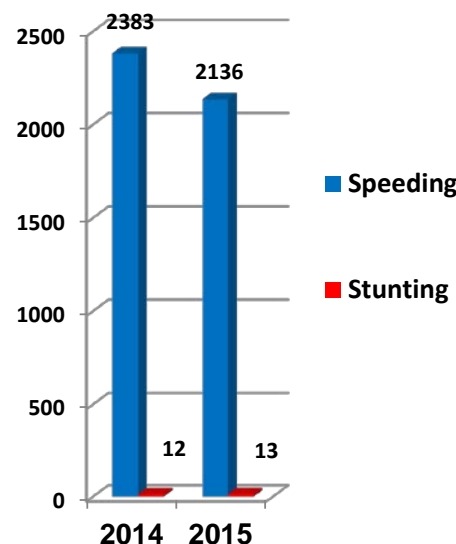
Impaired Driving

January - September



Aggressive Driving

January - September



Summary

Road Safety

From January 1st - September 30th, 2015, Hfx. District held 2,616 overall checkpoints, a +16% increase over the same period last year. Of those, 249 radar enforcement checkpoints were in school zones within the District, an +18% increase over the same period last year. An +8% increase in SOTs for Driving while Suspended/Prohibited or Disqualified was experienced

Impaired Driving

From Jan. 1st - Sept. 30th, 2015, Hfx. District received one hundred and seventy-three 911 calls from the public, a +23% increase over the same period in 2014. They contributed in charging one hundred and eleven drivers for impaired driving and eighteen driving suspensions, forty-four calls were unfounded. Hfx. District experienced a +4% increase in impaired driving charges over the same period in 2014. Impaired driving suspensions decreased by -32% over the same period.

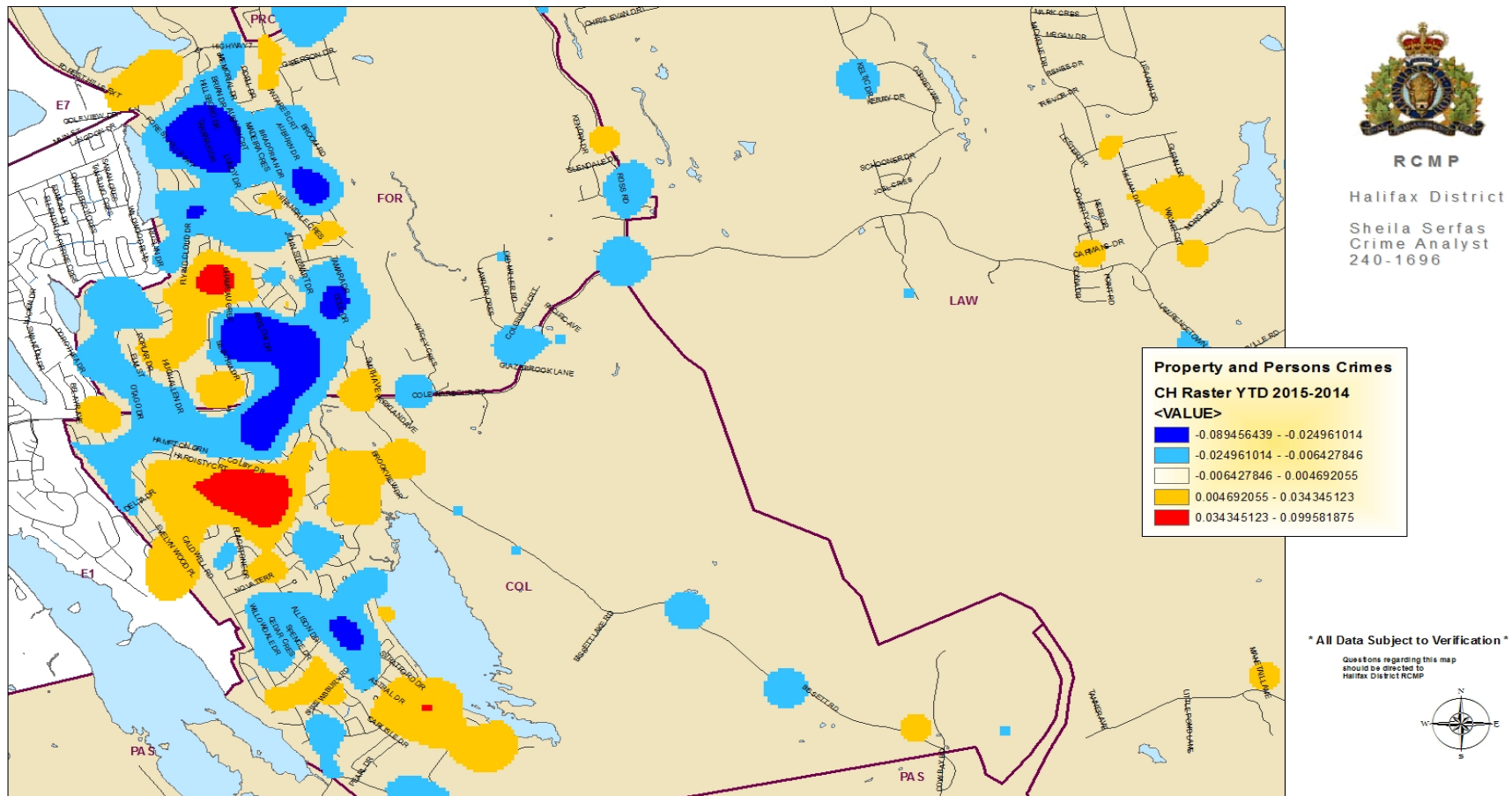
Aggressive Driving

A -10% decrease in speeding SOTs was seen and a +8% increase in stunting during January to September 2015.



Hfx. District - Board of Police Commissioner's Dashboard - October 16th, 2015

Comstat Crime Year to Date



This Document Is for Intelligence Purposes Only... Not for Legal Use... This Document Is Not to Be Reclassified, Copied, Reproduced, Used in Whole or Part or Further Disseminated, Without the Consent of the Originator This document is the property of the RCMP

Crime Reduction - Targeted enforcement in "Hot Spots" have been an integral part of Halifax District's Crime Reduction Strategy over the last several years. Hotspots were created for only Comstat Crimes for YTD 2014 and 2015. The map above depicts movement and reduction of crime Year To Date when subtracting YTD 2015 from the same period for 2014. The blue areas in the map are Comstat Crimes that were hot areas in 2014 that are now cooled, and the red being YTD for 2015 for the same types of crime. There has been a significant reduction in Comstat Crimes in Cole Harbour YTD. The areas in red will be further analysed to ensure we are conducting the right type of enforcement for the crimes occurring.