



Budgetary Overview

As of March 2, 2015, compensation should be at approximately 91.57 percent of the annual plan, while revenue and all other expenses should be at approximately 91.57 per cent.

- Revenue – 102.11 per cent.
- Compensation overall (including overtime) – 88.67 per cent.
Overtime – 106.17 per cent.
- All other expenses – 96.60 per cent.
- Net Budget overall – 89.65 per cent.

Upcoming Events

Church Service for the Elimination of Racial Discrimination

Halifax Regional Police is proud to once again be a part of the church service that is held annually at Cornwallis Street Baptist Church to mark the International Day for the Elimination of Racial Discrimination.

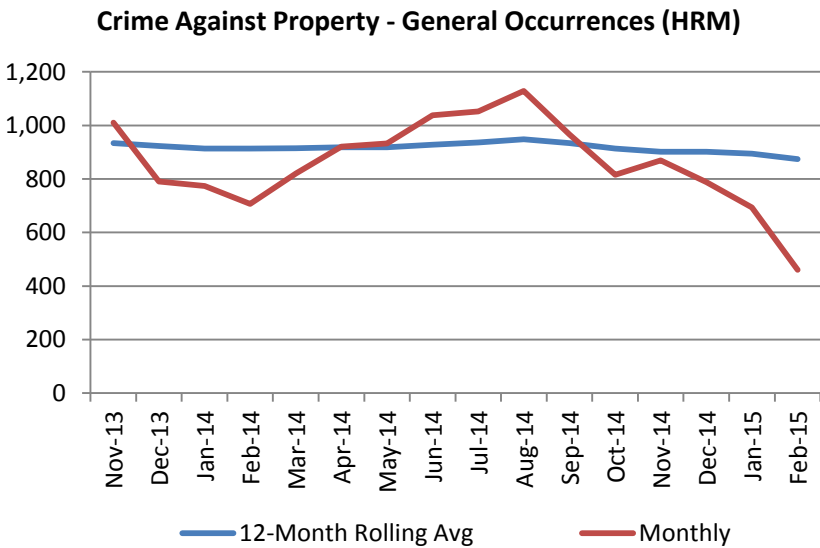
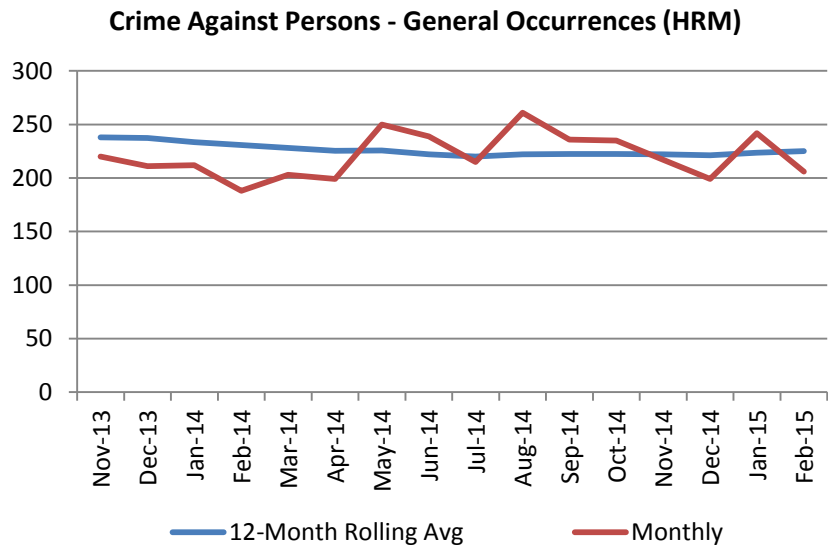
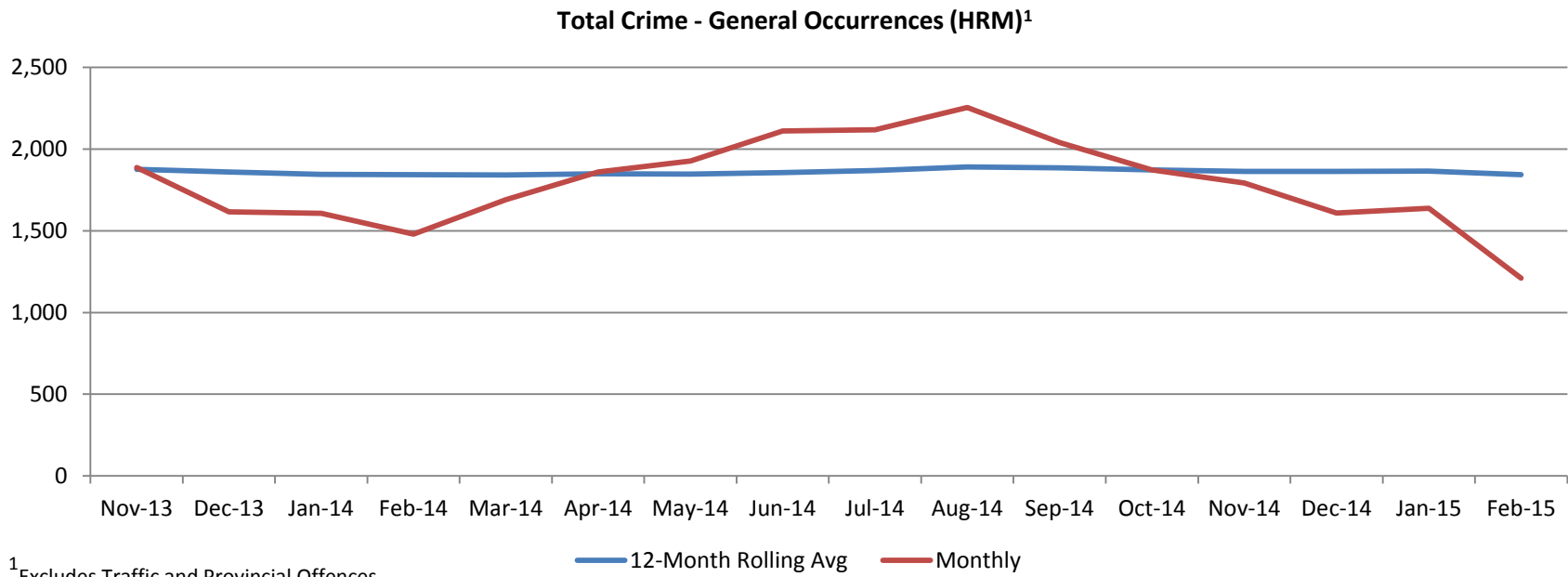
Chief Blais will publically reaffirm the commitment of Halifax Regional Police to eliminate racial discrimination and Cst. Shaun Carvery, our Diversity Officer, will bring remarks.

HRP employees will be acting as the church choir for this service.

When: March 22 at 10:45 a.m.

Where: Cornwallis Street Baptist Church
5457 Cornwallis Street, Halifax

Crime Trends – HRM Wide



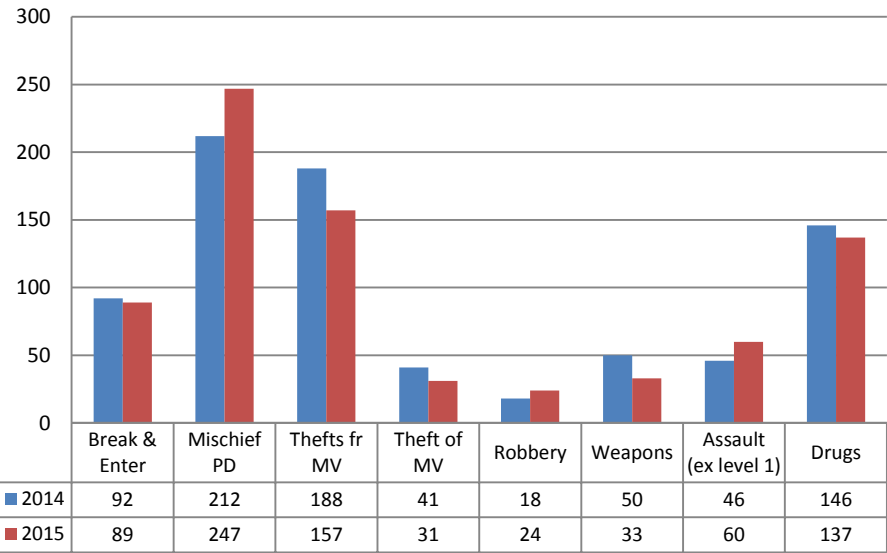
* Above charts represent primary offences.



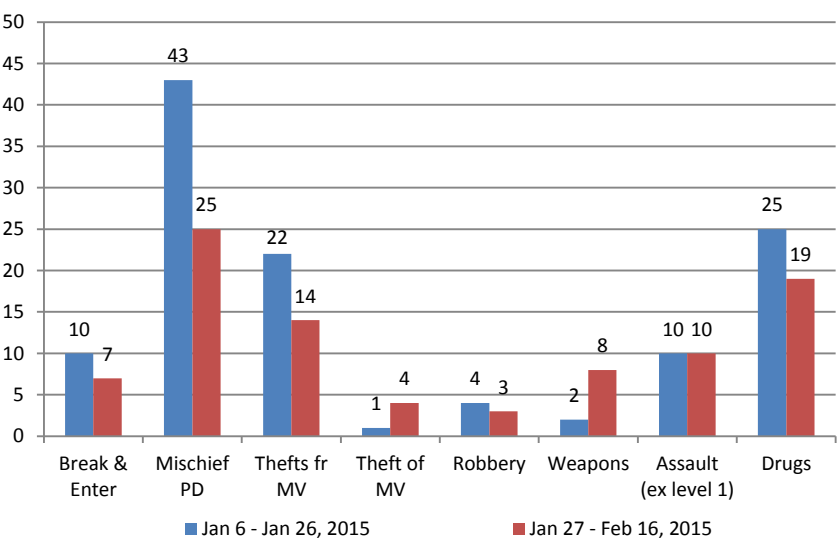
HRM Board of Police Commissioners Monthly Dashboard: February 28, 2015

Comstat Incidents - HRP

HRP Comstat - General Occurrences (Jan. 1 to Feb. 28)



Central Division - Comstat General Occurrences



Comstat Overview

Comstat incidents comprise break and enters, mischief property damage, thefts from vehicles, thefts of vehicles, robbery, weapon-related offences, assault causing bodily harm, assault with a weapon, aggravated assault and drug-related offences.

Central Division

Overall, Central Division saw a decrease of 21 incidents or 22.83 per cent in total person/property offences. This drop is mainly attributed to a decrease in mischief and property damage and theft from motor vehicle incidents. Mischief offences decreased by 18 incidents or 41.86 per cent throughout the division, while theft from motor vehicle offences decreased by eight incidents or 36.36 per cent. There were three robbery offences this period and charges were laid in two out of the three incidents, one in the Quinpool Road area and the other in the Downtown area.

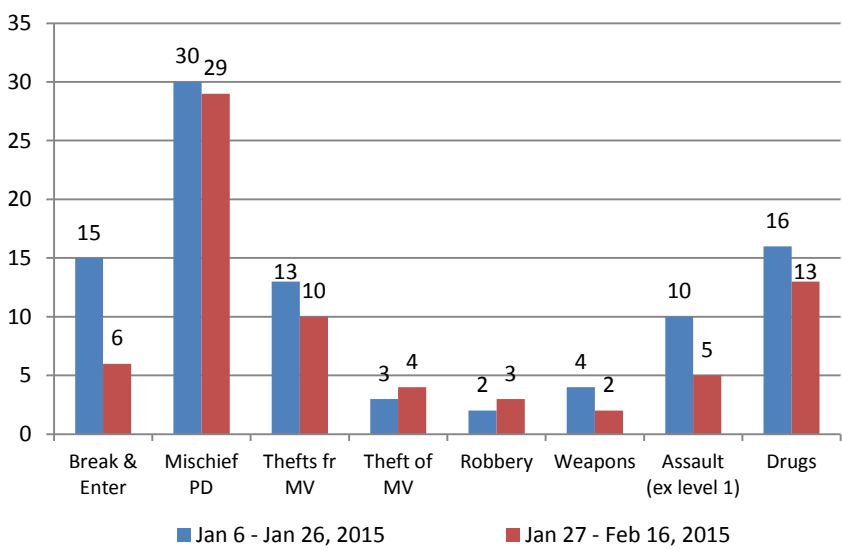
East Division

Overall, East Division saw a decrease of 18 incidents or 23 per cent in total person/property offences. The decrease is mainly attributed to a decrease in break and enters and assaults excluding level 1. Break and enter offences decreased by five incidents or 50 per cent and assaults excluding level 1 were down by nine incidents or 60 per cent. There was a minor increase in robbery offences in the north end of Dartmouth from two to three incidents, however, charges were laid in two incidents.

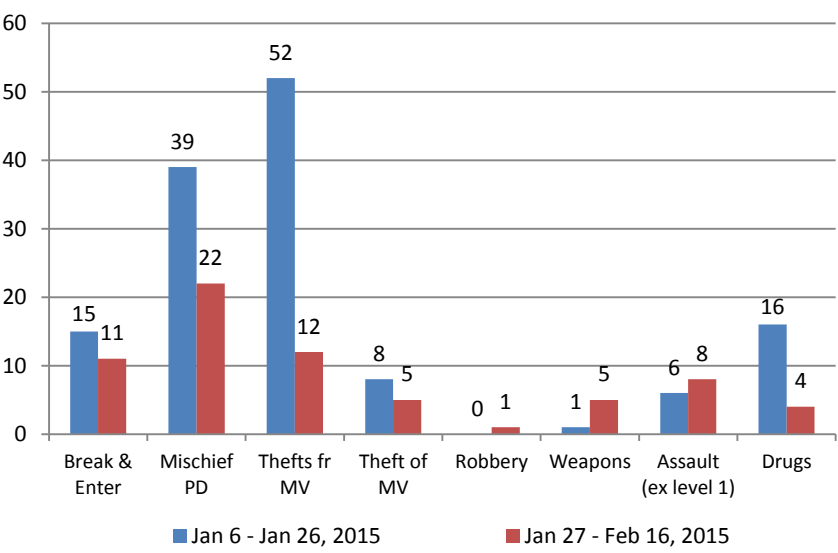
West Division

This past comstat period saw a significant decrease in overall total person/property offences in West Division. The most significant decreases were in theft from motor vehicle and mischief-related offences. Although break and enter offences decreased slightly as well, there was a residential break and enter trend developing early in the period and information on a possible suspect was distributed to police officers. There have been no similar breaks in the past two weeks and the incidents remain under investigation. Residential break and enters will be the focus for the next period.

East Division - Comstat General Occurrences



West Division - Comstat General Occurrences



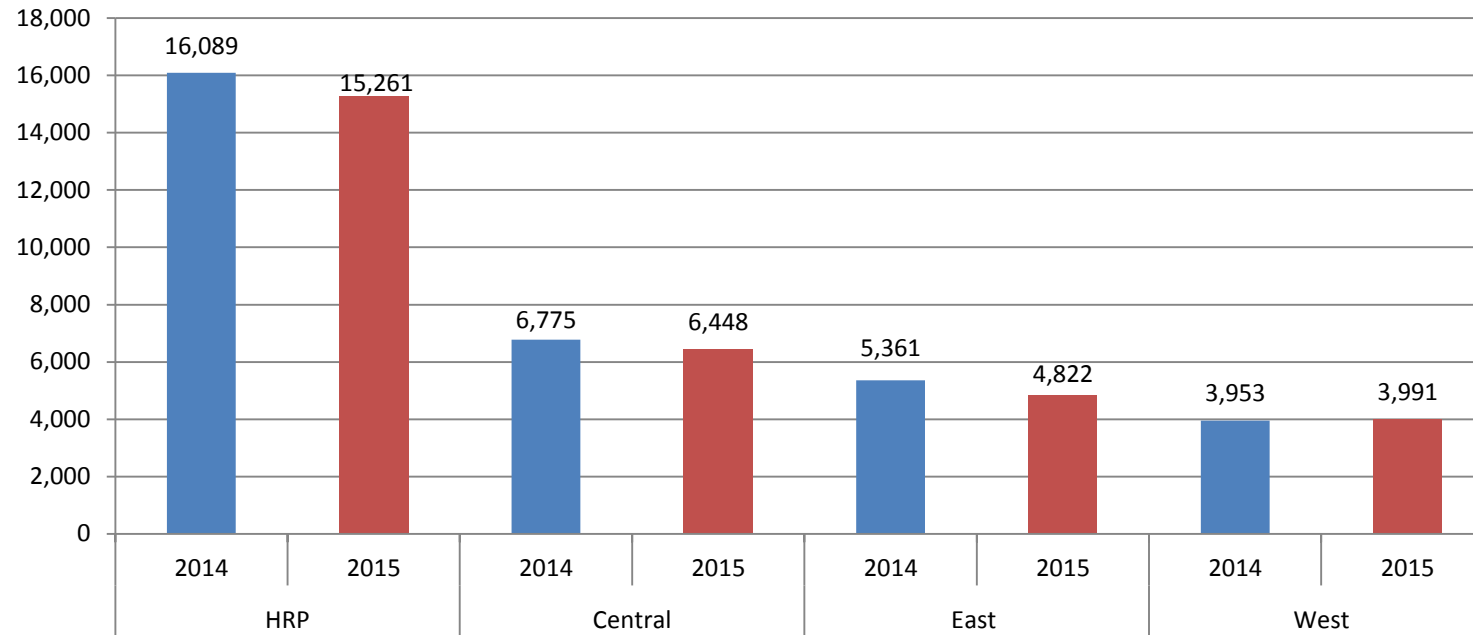
* Above charts represent primary offences.



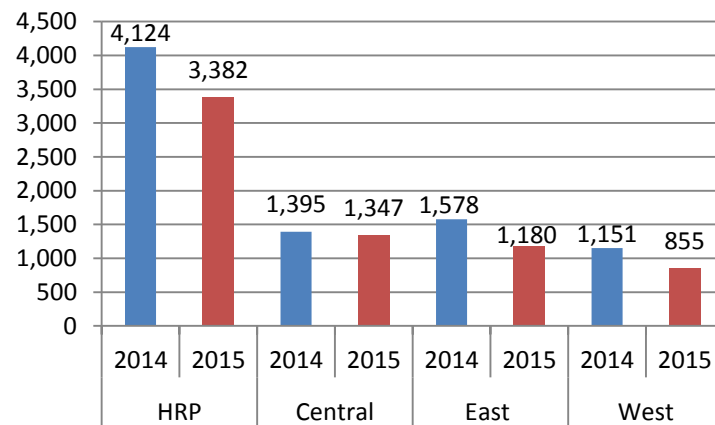
HRM Board of Police Commissioners Monthly Dashboard: February 28, 2015

Calls for Service - HRP

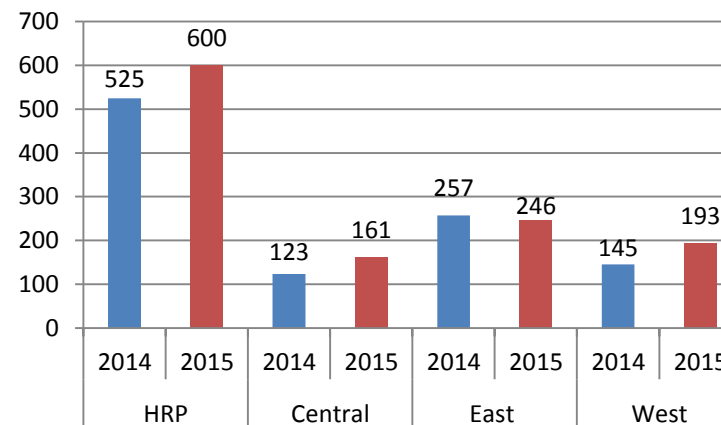
HRP Calls for Service (Jan. 1 to Feb. 28)
(excluding Traffic Stops & Proactive Assignments)



Traffic Stops (Jan. 1 to Feb. 28)

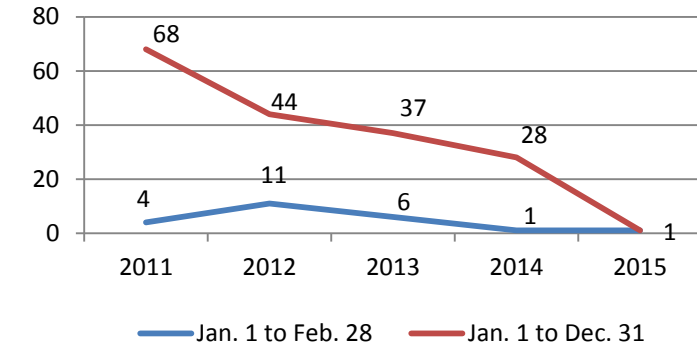


Proactive Assignments (Jan. 1 to Feb. 28)



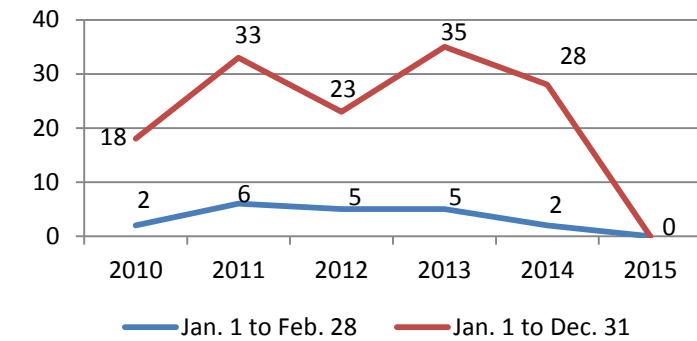
Firearms & Homicides – HRM Wide

Firearms Discharged



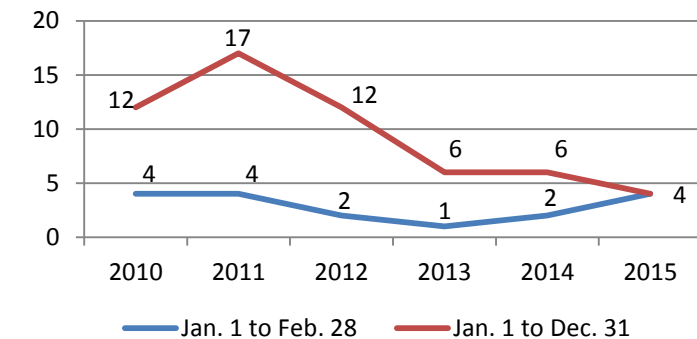
Includes criminally motivated shootings only.

Attempted Homicides



Error rate +/- 1 due to reclassification after data extraction.

Homicides



Homicide figures refer to # victims, not events.

2013 stats do not include 2 motor vehicle-related deaths.