



VEHICLE / PEDESTRIAN COLLISIONS

**RCMP Halifax District: January to August
2014**

DISCLAIMER: All figures presented in this report reflect the information held on the Versadex system at the time of data extraction and are subject to change without notice.

Summary

- 8 vehicle/pedestrian collisions were **reported** in the January - August 2014 period in the RCMP Halifax District coverage area.

Note: This report presents strictly vehicle/pedestrian collisions and excludes those incidents involving bicycles.

Snapshot

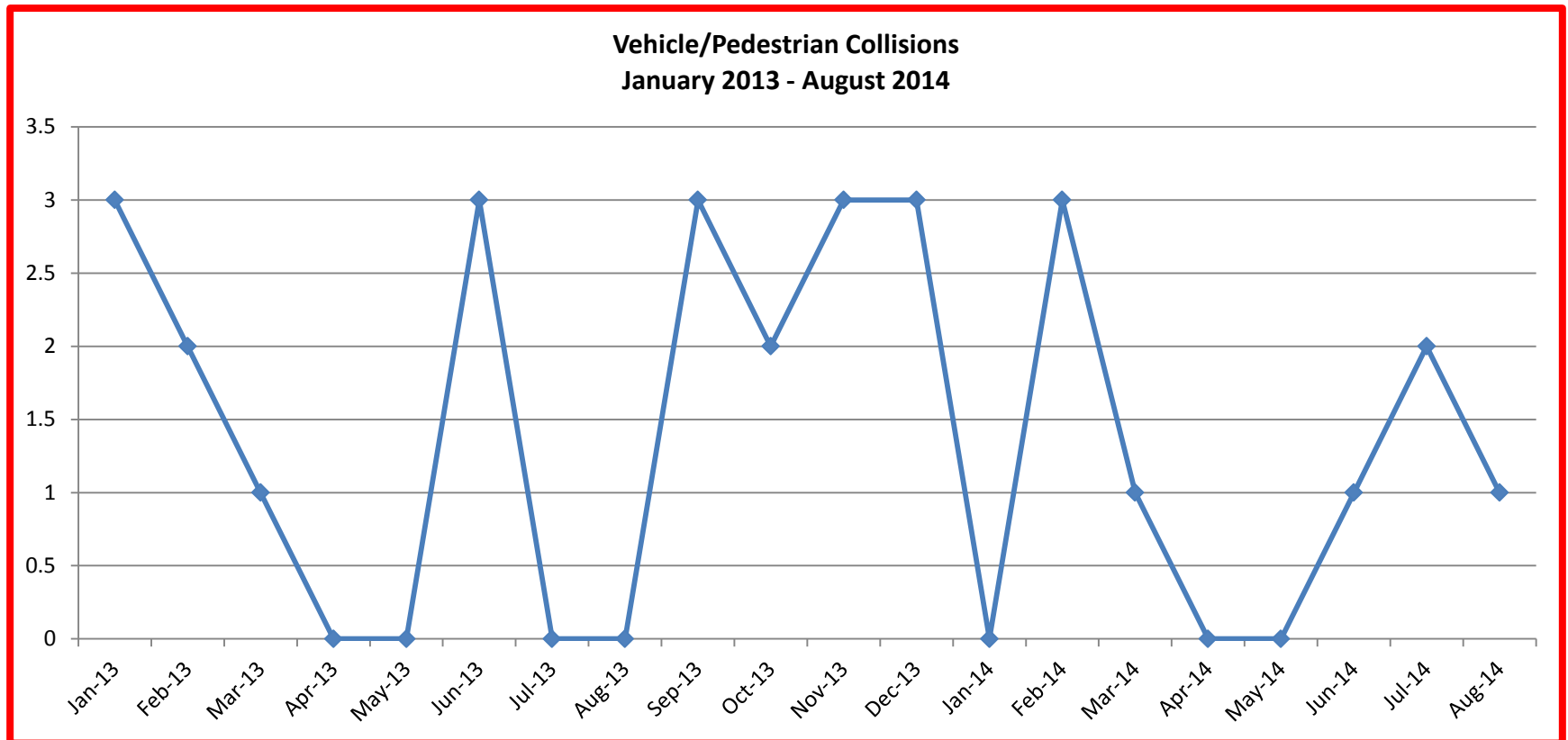
January – August 2014	
Month	# Incidents
January	0
February	3
March	1
April	0
May	0
June	1
July	2
August	1
TOTAL YTD	8

January – August 2014	
Type*	# SOTs
Driver	3
Pedestrian	0
Pending - SUI	0
No SOT	5
TOTAL YTD	3

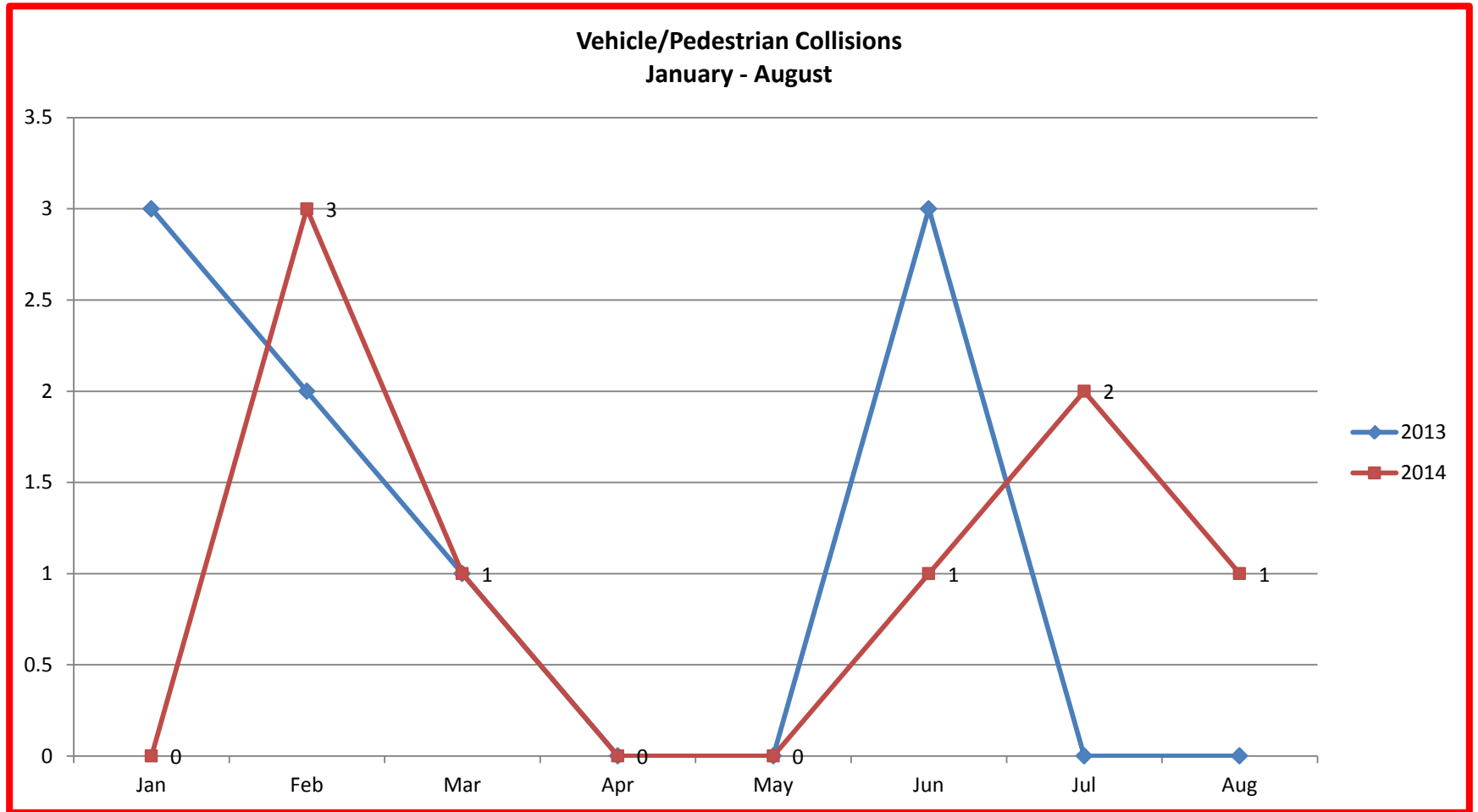
* Excludes SOTs unrelated to collision (e.g., no insurance)

Trends

The number of reported vehicle/pedestrian collisions decreased by one or -11% in the past eight months of 2014 when compared to January to August of 2013.



Trends

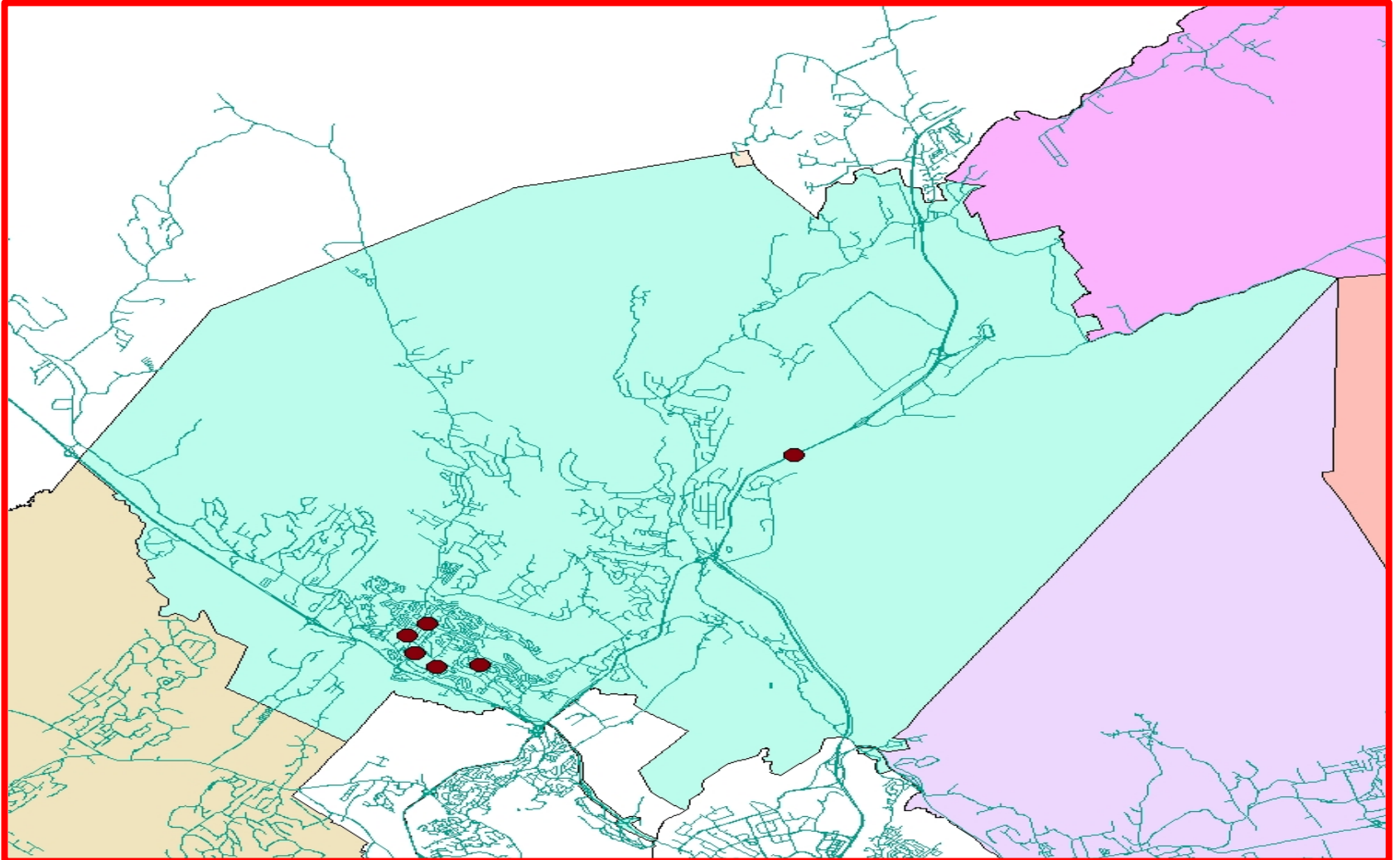


Districts

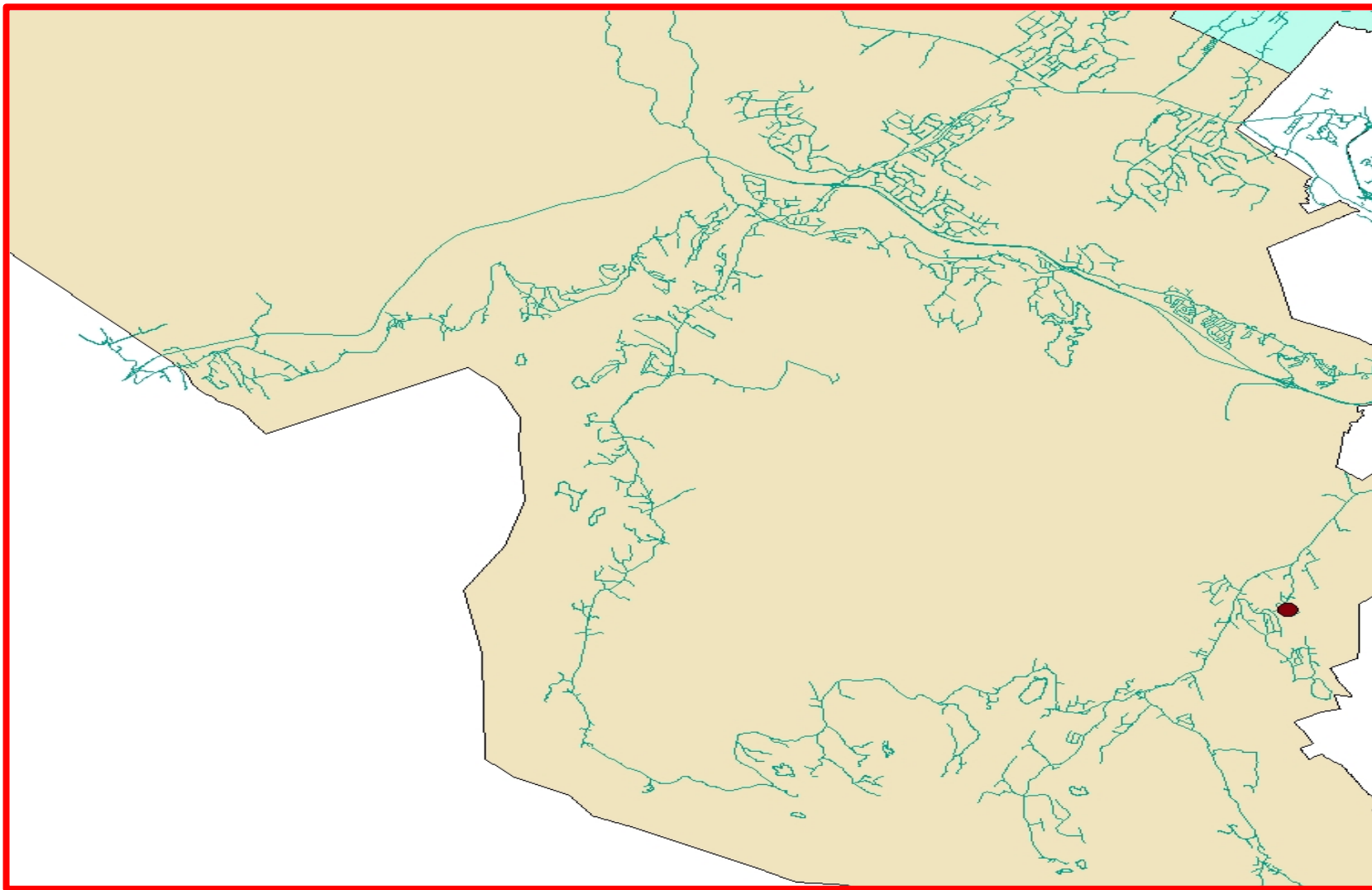
Tantallon experienced a substantial decrease in **reported** vehicle/pedestrian collisions in January – August 2014 compared to January - August 2013, while Lower Sackville had seven collisions in the first eight months of 2014 compared to three over the same period in 2013.

January - August		
District	2013	2014
Cole Harbour	1	0
Lower Sackville	3	7
Musquodoboit Hbr.	0	0
North Central	0	0
Sheet Harbour	0	0
Tantallon	5	1
TOTAL	9	8

Sackville



Tantallon



Collision Types

In the first eight months of 2014 four incidents of vehicle/pedestrian collisions reported occurred in Parking Lots or Roadside compared to the same period in 2013.

A total of four occurred in crosswalks (marked or unmarked) in the first eight months of 2014 compared to one compared to the same period in 2013.

January - August		
COLLISION TYPE	2013	2014
Crosswalks (Marked or Unmarked)	1 (11%)	4 (50%)
Parking Lots/Roadside	8 (89%)	4 (50%)

Injuries

88% of the 8 pedestrian victims experienced an injury, six were minor and one a fatality in the reported incidents between January and August 2014.

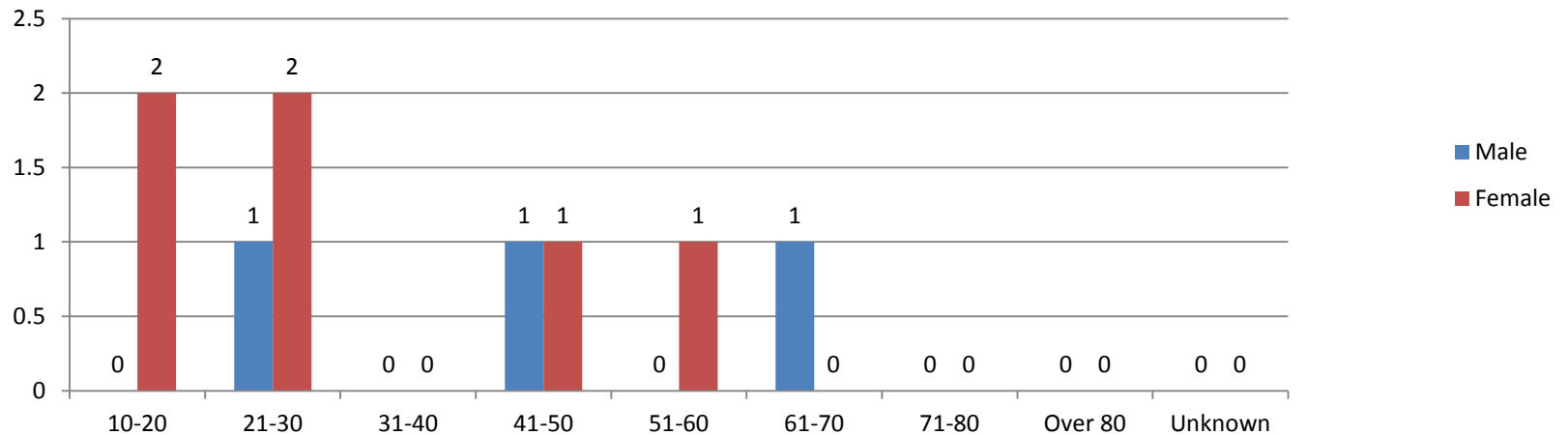
No drivers reported an injury.

January – August 2014		
INJURY TYPE (PEDESTRIANS)	#	%
No Injury	1	13%
Minor	6	75%
Moderate	0	0%
Serious	0	0%
Fatality	1	13%
TOTAL	8	

Pedestrian Characteristics

63% of all of the pedestrian victims were in the 10 - 30 years age range.

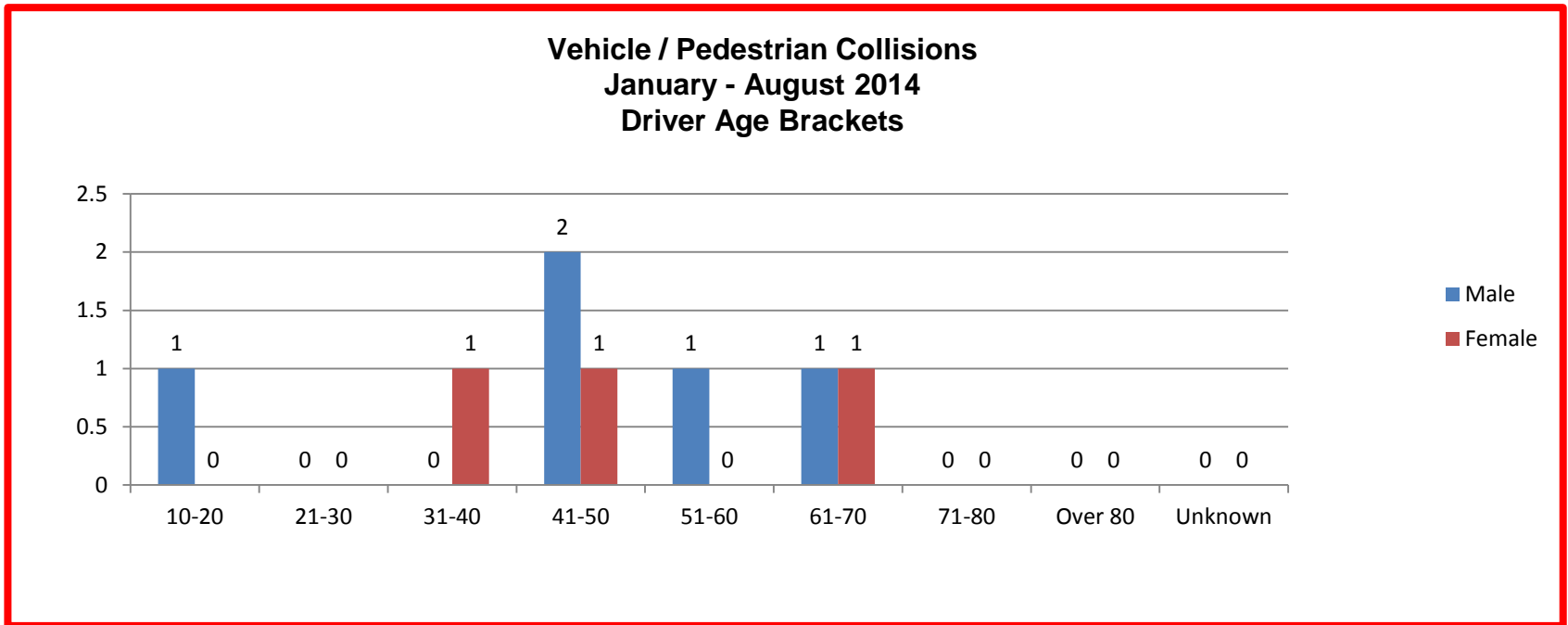
**Vehicle / Pedestrian Collisions
January - August 2014
Pedestrian Age Brackets**



Driver Characteristics

Males accounted for 63% of drivers involved in the reported vehicle/pedestrian collisions during the Jan-August 2014 period.

This is in contrast to the proportion of males of approximate driving age in HRM, which is nearly 48% according to the HRM 2011 census.



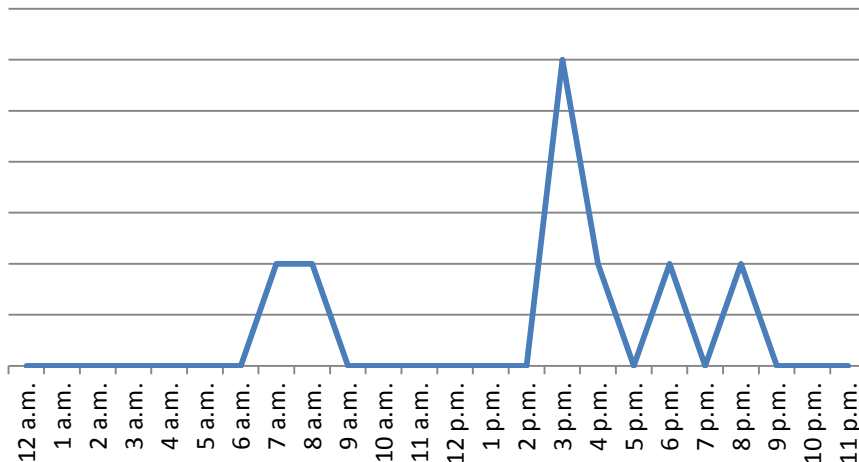
Peak Collision Times

Reported vehicle/pedestrian collisions peaked during the 3 – 4p.m. time period during January - August 2014, followed by the 7 – 8 a.m. time period.

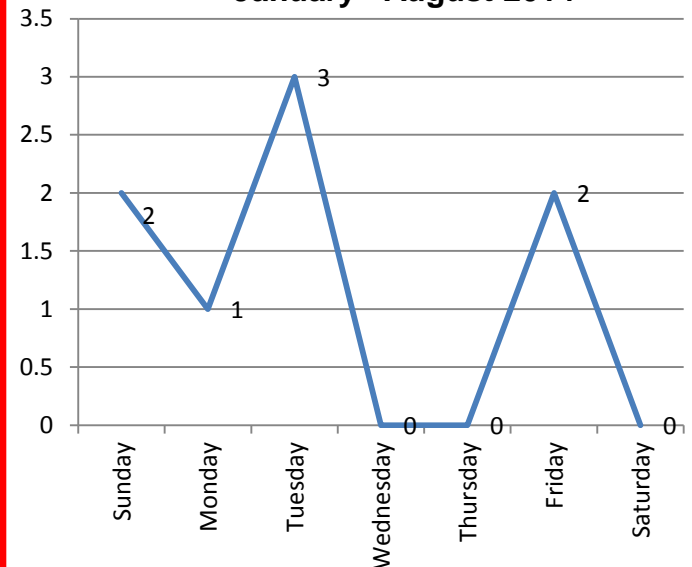
Weekdays were the most common days for vehicle/pedestrian collisions, with the exception of Wednesdays. This is in contrast to the 2013 trend, where Wednesday was the peak day for collisions.

Note: Due to the small numbers, these trends cannot be deemed statistically significant.

**Time of Day
January - August 2014**



**Day of Week
January - August 2014**



Weather & Lighting Conditions

100% of the reported vehicle/pedestrian collisions throughout this time period occurred during clear weather conditions.

63% of the collisions took place during daylight.

63% of the collisions took place during daylight with clear weather conditions.

