



# VEHICLE / PEDESTRIAN COLLISIONS

**HRM: January to November 2014**

**DISCLAIMER:** All figures presented in this report reflect the information held on HRP systems at the time of data extraction and are subject to change without notice.

# Summary

- 280 vehicle/pedestrian/bicycle collisions were **reported** in the January-November 2014 period in Halifax Regional Municipality.
- Of these collisions, 57 involved bicycles.
- The remaining 223 incidents were strictly vehicle/pedestrian collisions, with 229 pedestrian victims.
  
- **TOTAL VEHICLE/PEDESTRIAN COLLISIONS IN HRM: 223**
- **TOTAL VEHICLE/PEDESTRIAN VICTIMS IN HRM: 229**

Note: This report presents strictly vehicle/pedestrian collisions and excludes those incidents involving bicycles.

# Snapshot

January – November 2014	
Month	# Incidents
January	27
February	23
March	22
April	11
May	11
June	19
July	16
August	13
September	22
October	20
November	39
<b>TOTAL YTD</b>	<b>223</b>

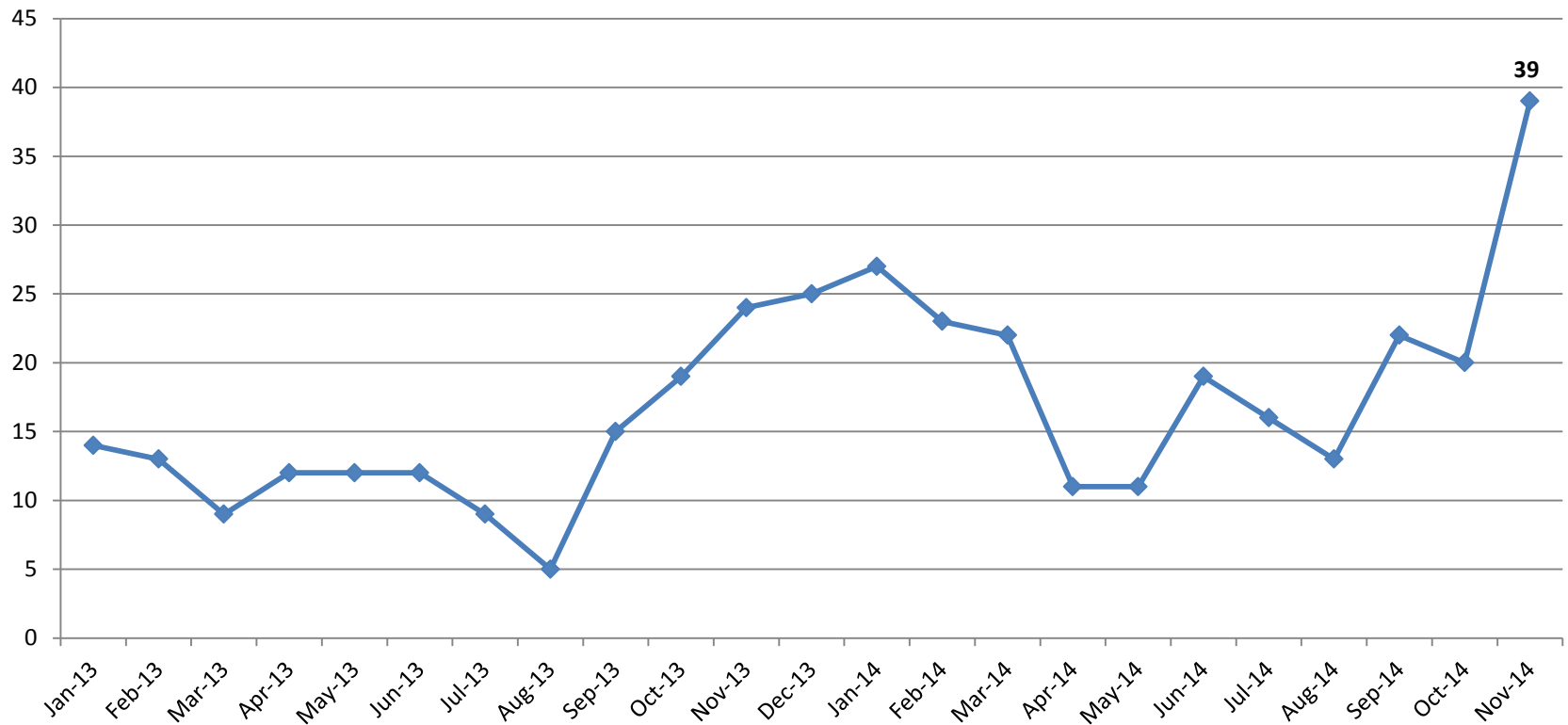
January – November 2014	
Type*	# SOTs
Driver	90
Pedestrian	13
Pending / SUI	4
No SOT	116
<b>TOTAL</b>	<b>223</b>

\* Excludes SOTs unrelated to collision  
(e.g., no insurance)

# Trends

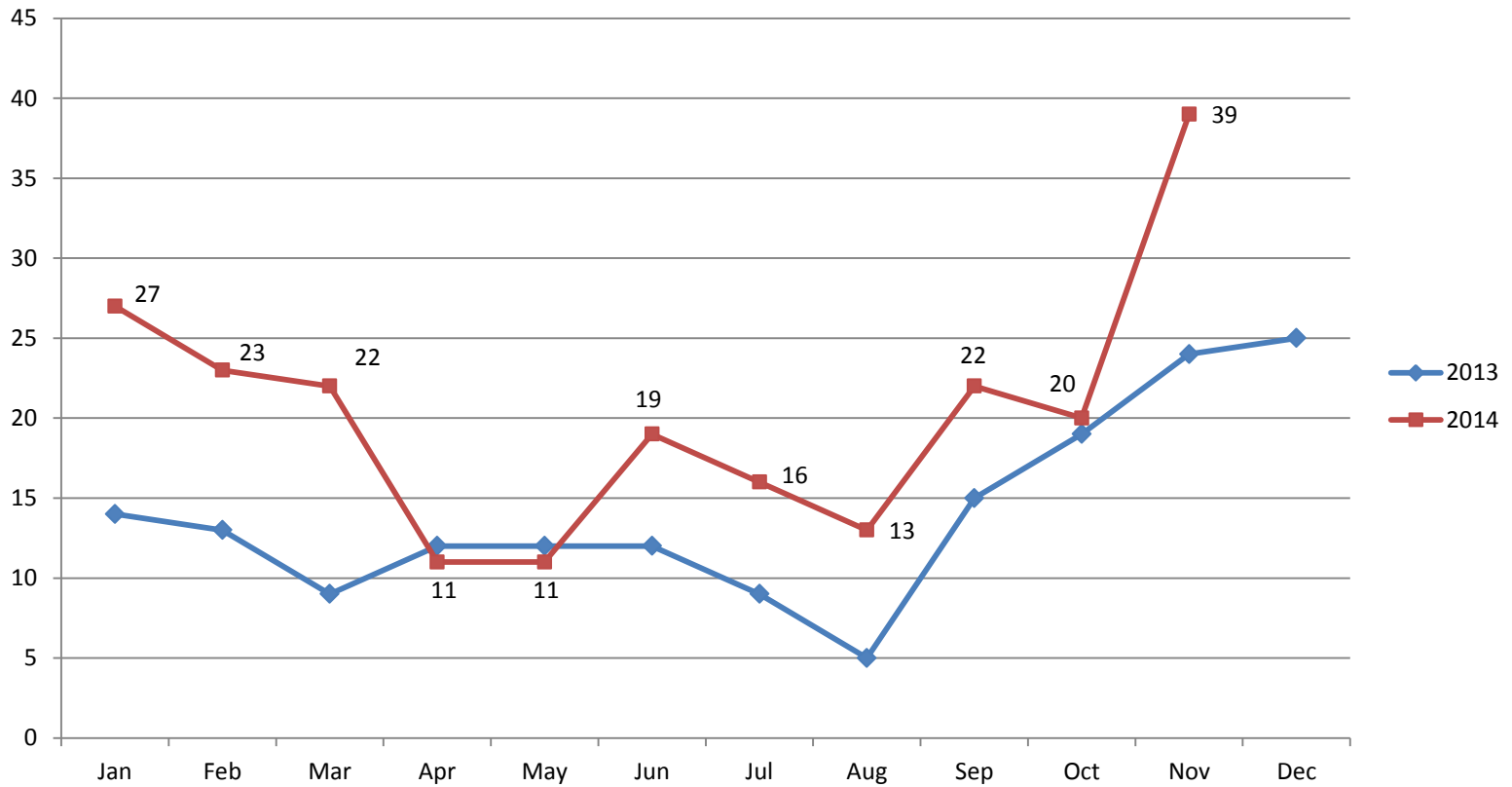
In 2013 the number of vehicle/pedestrian collisions increased gradually throughout the Fall and Winter months. A similar trend is occurring in 2014, although November saw a sharp increase.

**Vehicle/Pedestrian Collisions**  
**January 2013 - November 2014**



# Trends

Vehicle/Pedestrian Collisions  
2013 vs 2014



# Divisions & Districts

All HRP divisions had a larger number of reported vehicle/pedestrian collisions in Jan-Nov 2014 compared to Jan-Nov 2013.

Sackville has had double the number of incidents in 2014 compared to the previous year.

January - November			
DIVISION/DISTRICT	2013	2014	% Change
Central	54	88	↑ 63.0%
East	32	55	↑ 71.9%
West	41	64	↑ 56.1%
<b>HRP</b>	<b>127</b>	<b>207</b>	<b>↑ 63.0%</b>
Cole Harbour	5	2	↓ 60.0%
Sackville	6	12	↑ 100.0%
Musquodoboit Hbr.	0	0	0.0%
North Central	0	0	0.0%
Sheet Harbour	0	0	0.0%
Tantallon	6	2	↓ 66.7%
<b>RCMP</b>	<b>17</b>	<b>16</b>	<b>↓ 5.9%</b>
<b>HRM TOTAL</b>	<b>144</b>	<b>223</b>	<b>↑ 54.9%</b>

# Focus on November (HRP)

There were 18 more vehicle/pedestrian collisions reported in the HRP service area in November 2014 compared to October 2014.

Considerable increases took place in Central and East Divisions.

HRP		
DIVISION	Oct 2014	Nov 2014
Central	5	19
East	5	11
West	9	7
HRP	19	37

# Focus on November (HRP)

Compared to October 2014, 3 more collisions were reported in the 0600-0700 timeframe and 9 more were reported in the 1800-2000 timeframe.

Of the 11 which occurred from 1800-2000, 7 took place in Central Division (5 of these were in crosswalks).

HRP		
TIME PERIOD	Oct 2014	Nov 2014
0600-0700	0	3
1800-2000	2	11



# Focus on November (HRP)

A larger proportion of collisions in November took place during adverse weather conditions compared to October.

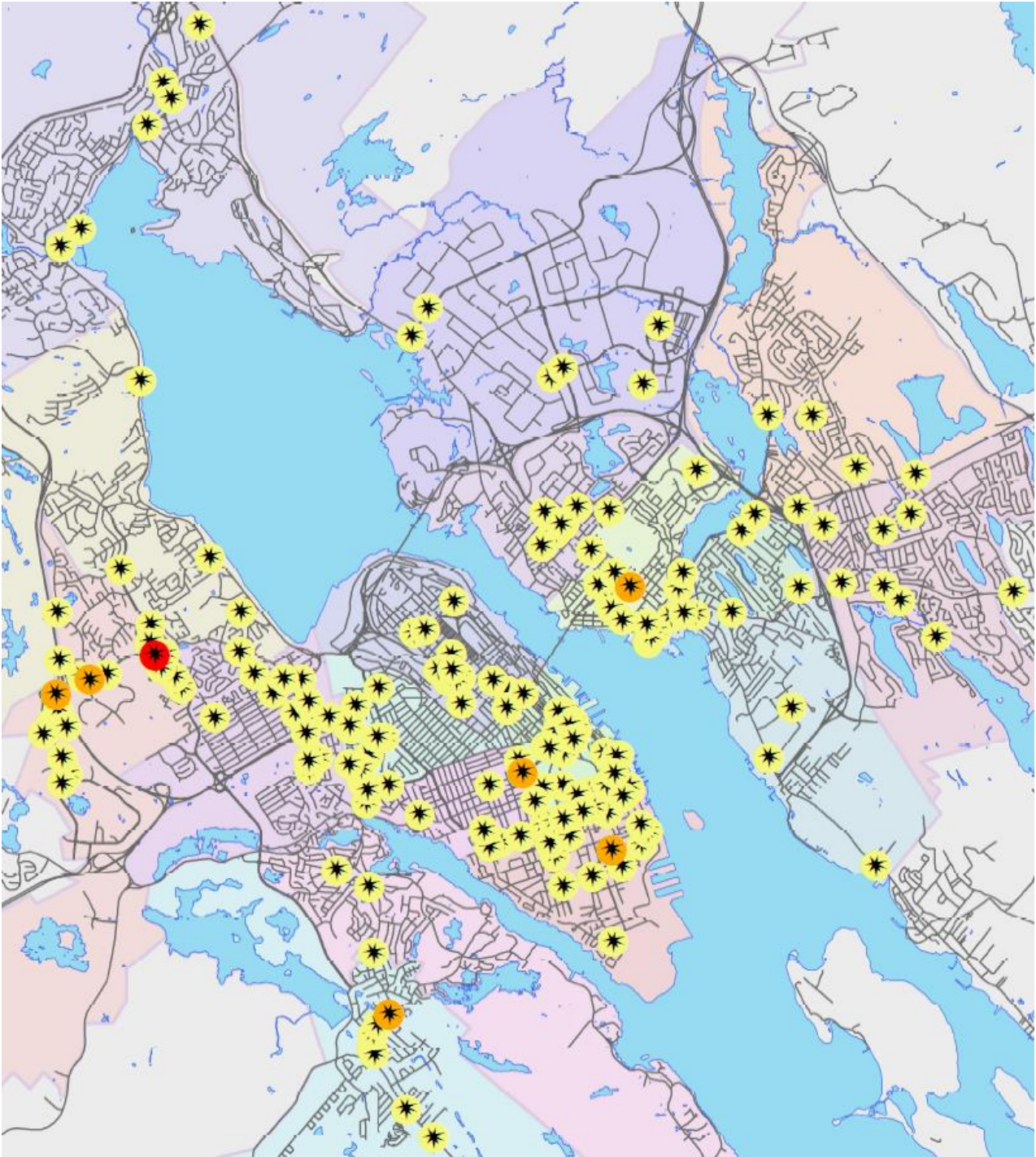
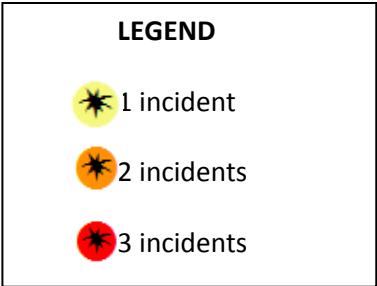
HRP		
WEATHER	Oct 2014	Nov 2014
Clear/Sunny	12 (67%)	9 (35%)
Overcast	0 (0%)	5 (19%)
Rain/Fog	6 (33%)	12 (46%)
Unknown	1	11*

\* Not yet available  
% excludes unknowns

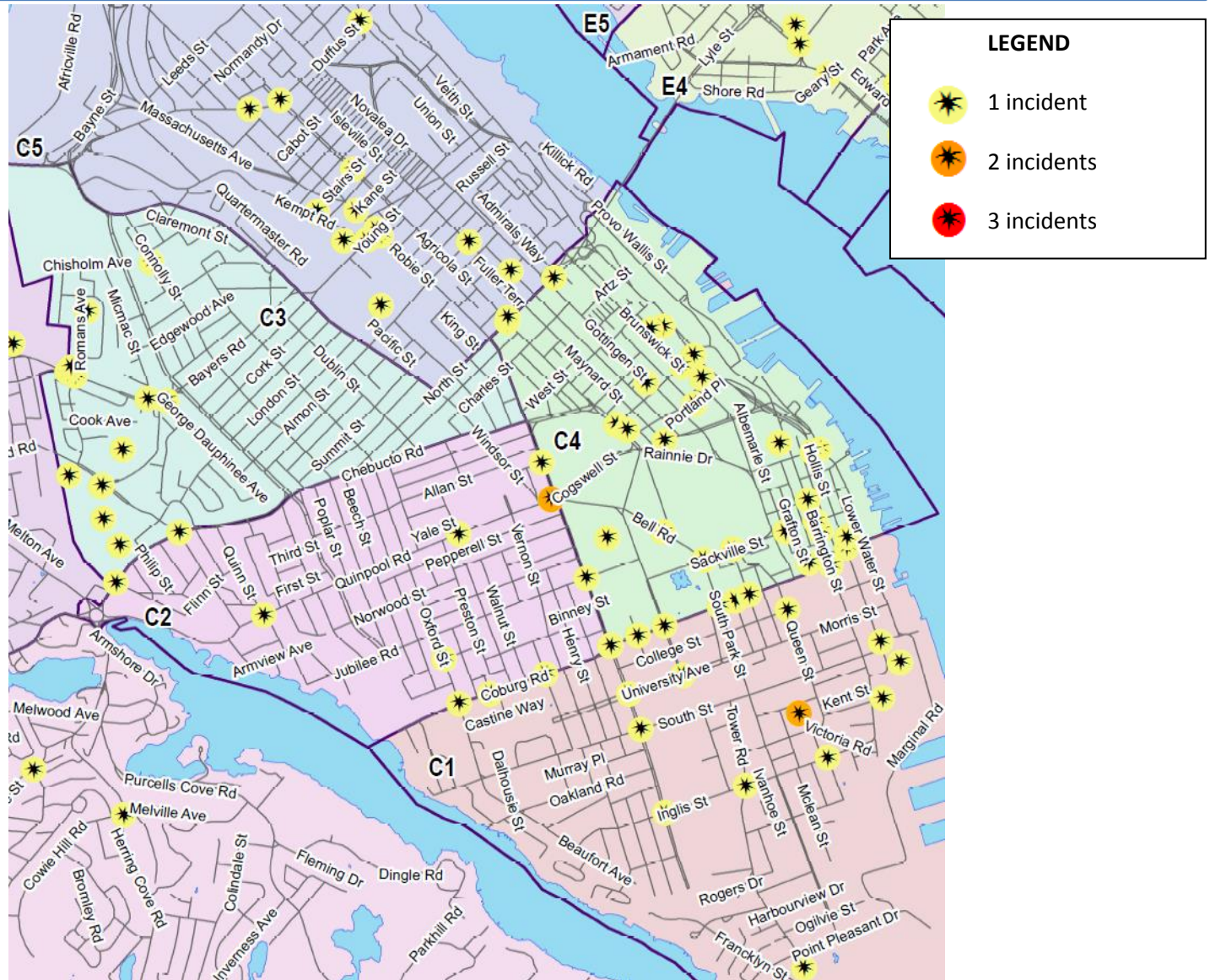
A larger proportion of collisions in November occurred during darkness compared to October (78% in Nov; 42% in Oct).

HRP		
WEATHER	Oct 2014	Nov 2014
Daylight	11 (58%)	8 (22%)
Dark	8 (42%)	29 (78%)

# HRP Area

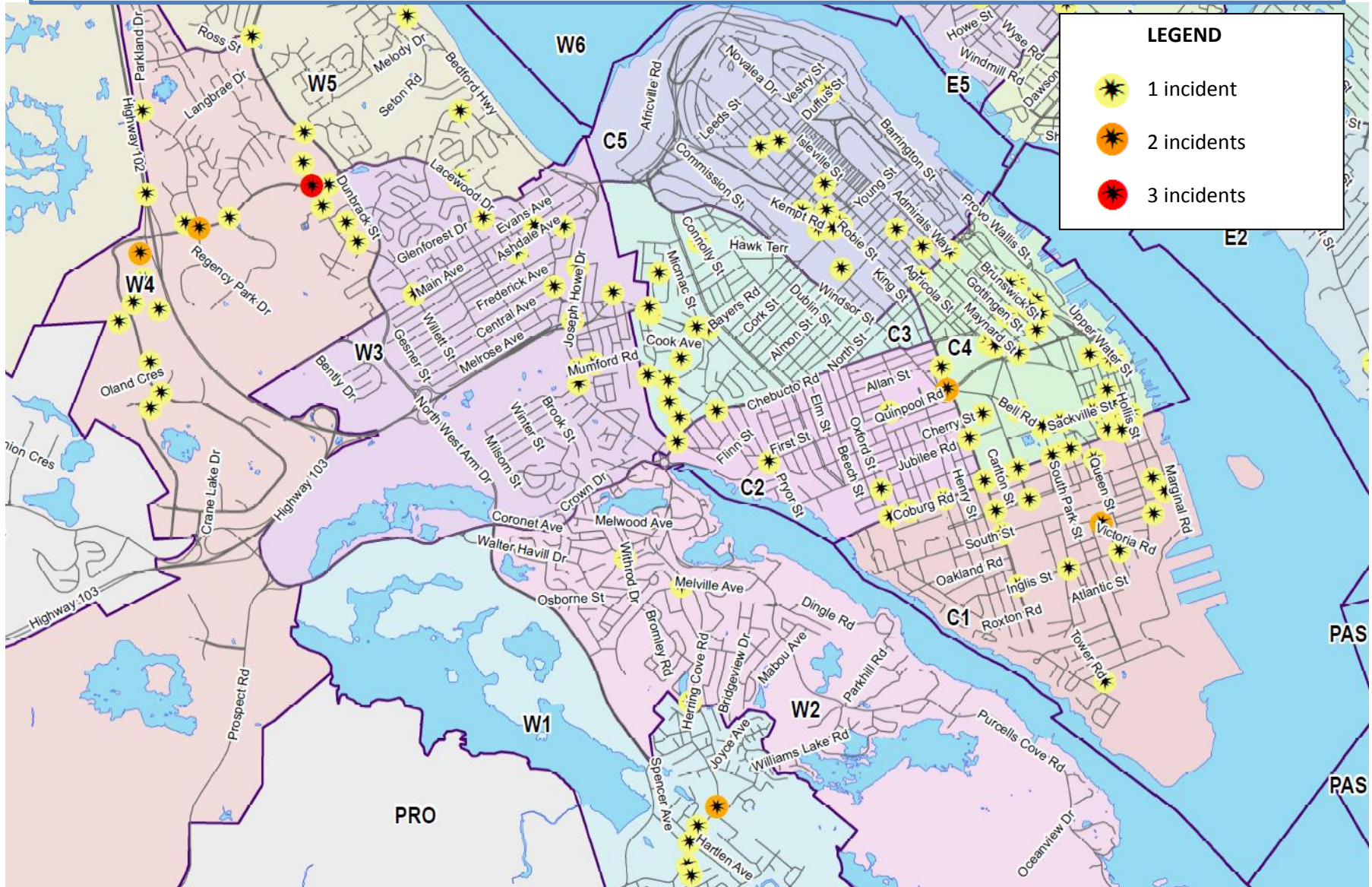


# Central Division

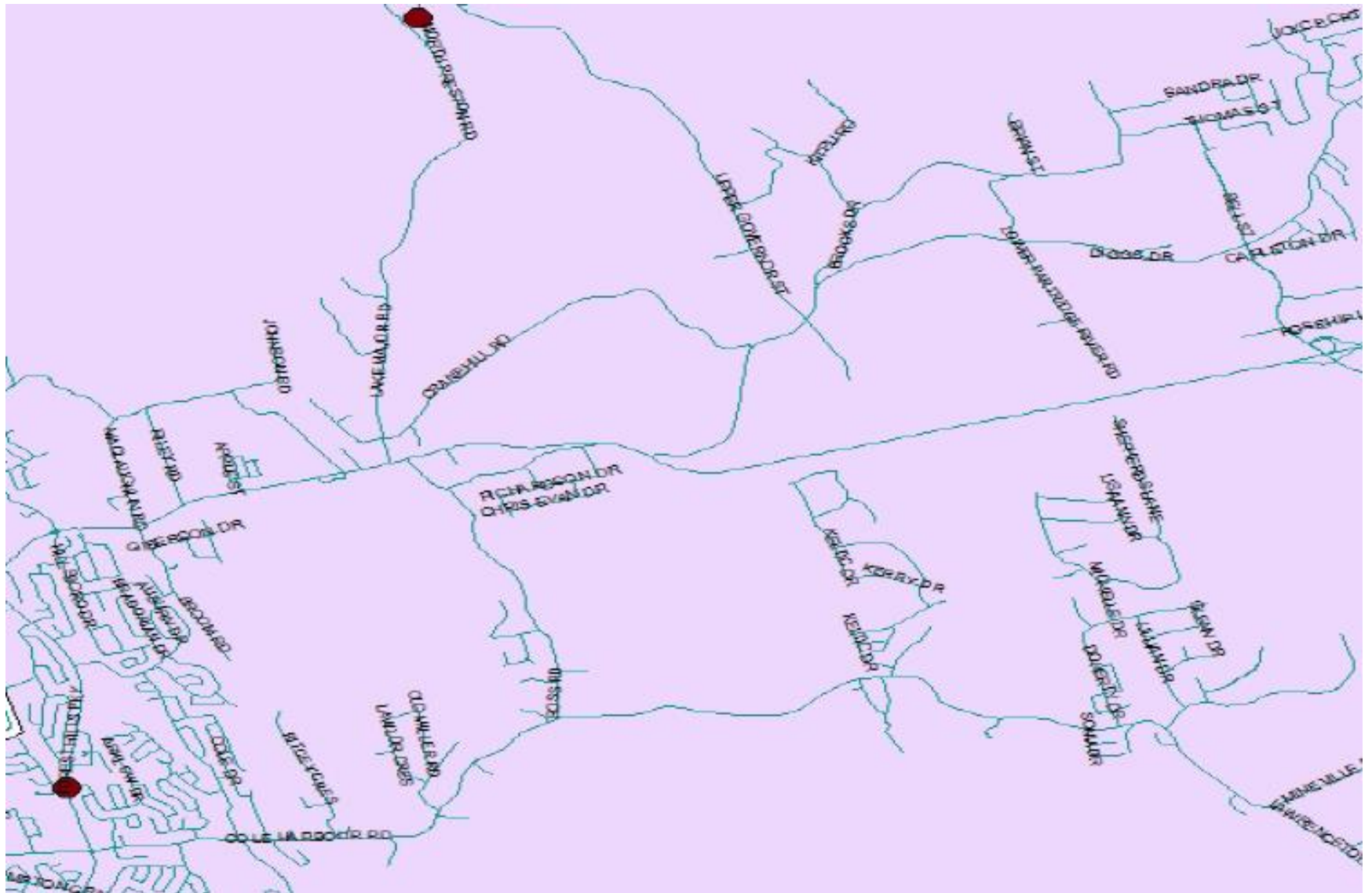




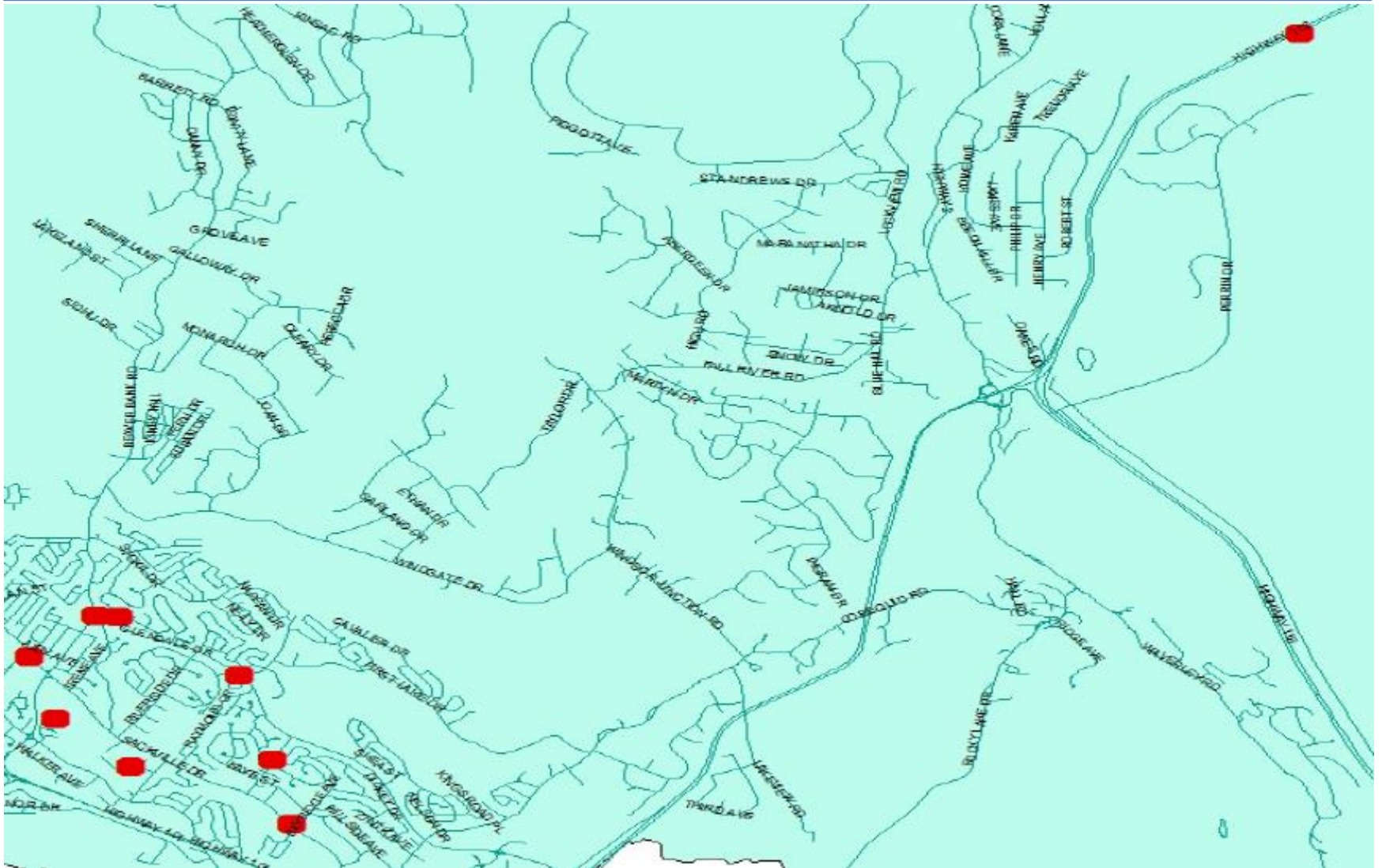
# West Division



# Cole Harbour



# Sackville







# Collision Types

In both 2013 and 2014 the majority of vehicle/pedestrian collisions reported from January to November occurred in crosswalks.

The proportion of reported collisions that took place in parking lots decreased in the 2014 period compared to 2013.

January - November		
COLLISION TYPE	2013	2014
Crosswalks	82 (57%)	134 (60%)
Parking Lots	33 (23%)	32 (14%)

# Injuries

81% of the 229 pedestrian victims experienced either no injury or minor injury in the reported incidents between January and November 2014.

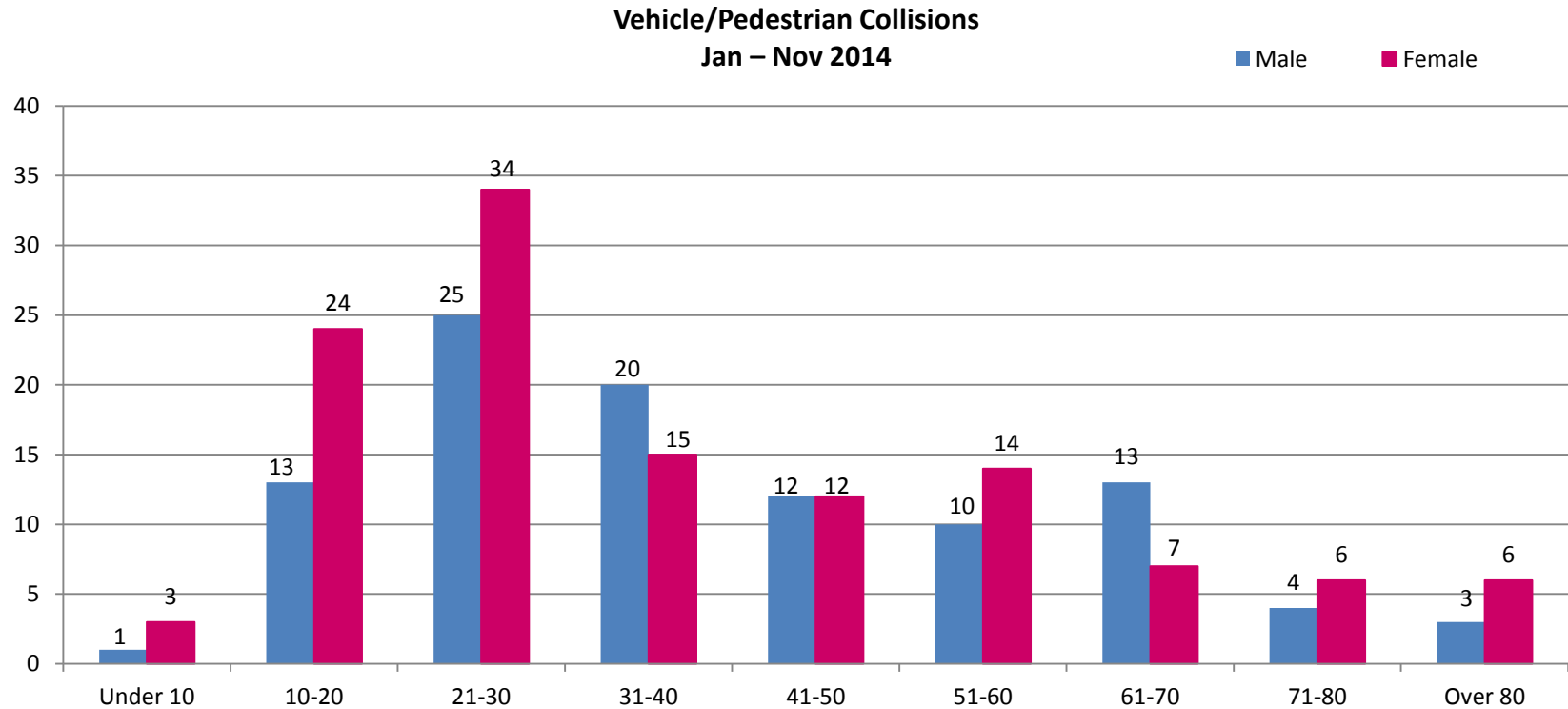
There have been four fatalities so far this year in HRM.

Two drivers reported minor injuries.

January – November 2014		
INJURY TYPE (PEDESTRIANS)	#	%
No Injury	73	31.9%
Minor	113	49.3%
Moderate	27	11.8%
Serious	9	3.9%
Fatality	4	1.8%
Unknown	3	1.3%
<b>TOTAL</b>	<b>229</b>	

# Pedestrian Characteristics

27% of all pedestrian victims were in the 21-30 years age range and 16% were in the 31-40 years age range.

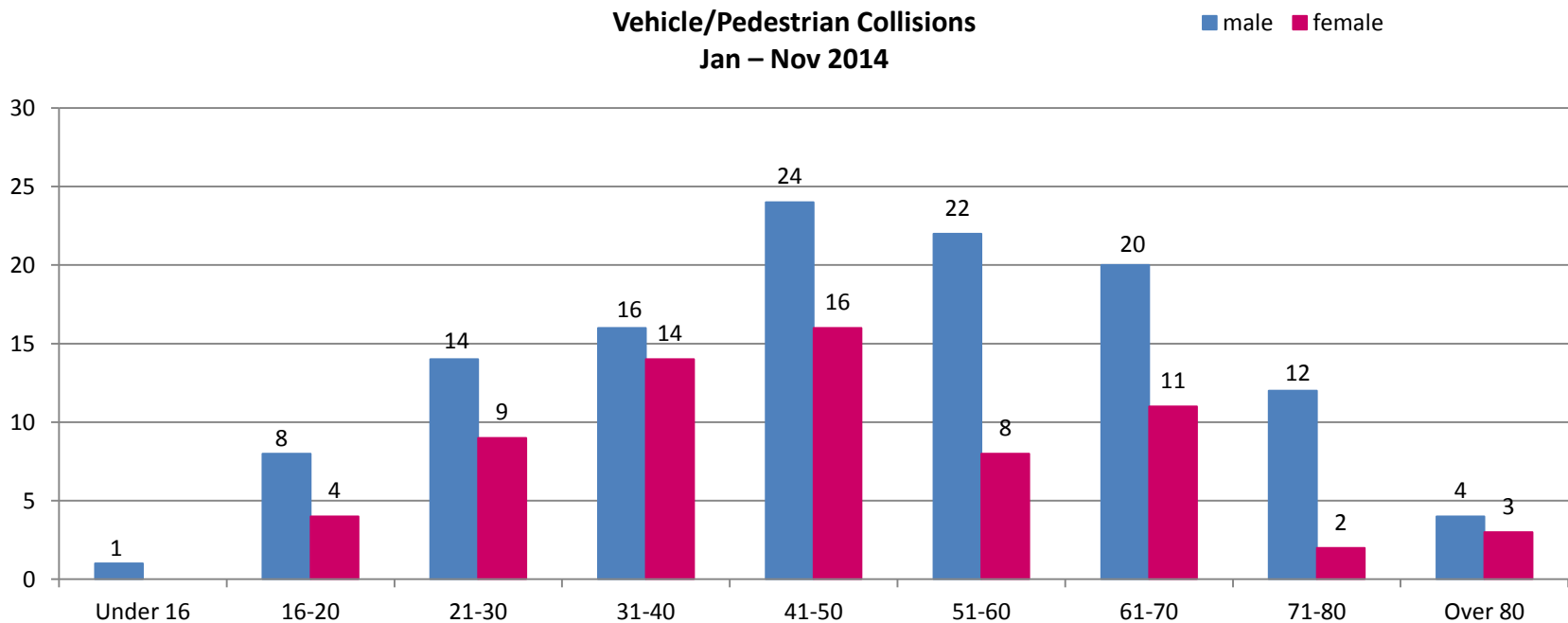


\* Above chart excludes 7 cases where victim age unknown

# Driver Characteristics

Males accounted for approx. 64% of drivers involved in the reported vehicle/pedestrian collisions during the Jan-Nov 2014 period. Note: Excludes 13 cases where driver sex was unknown.

This is in contrast to the proportion of males of approximate driving age in HRM, which is nearly 48% according to the HRM 2011 census.



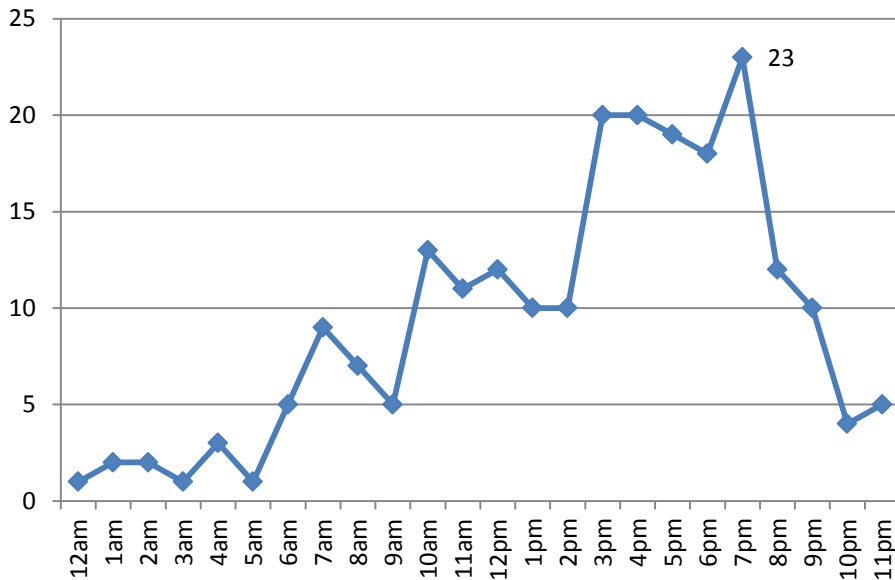
\* Above chart excludes 35 cases where driver sex and/or age unknown

# Peak Collision Times

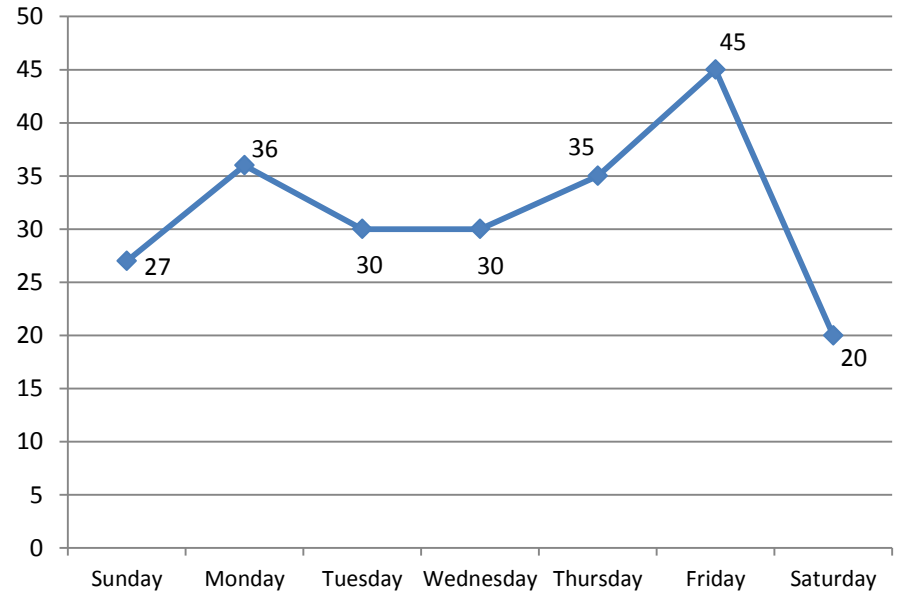
Reported vehicle/pedestrian collisions peaked during the 3-8pm time period during Jan-Nov 2014.

Fridays were the most common days for vehicle/pedestrian collisions.

**Time of Day**  
Jan - Nov 2014



**Day of Week**  
Jan - Nov 2014



# Weather & Lighting Conditions

60% of the reported vehicle/pedestrian collisions throughout this time period occurred during clear or sunny weather conditions.

59% of the collisions took place during daylight.

41% of the collisions took place during daylight with clear weather conditions.

Note: excludes 14 cases where weather conditions unknown.

