



# VEHICLE / PEDESTRIAN COLLISIONS

**HRM: January – October 2015**

**DISCLAIMER:** All figures presented in this report reflect the information held on HRP systems at the time of data extraction and are subject to change without notice.

# Summary

- 220 vehicle/pedestrian/bicycle collisions were **reported** in January-October 2015 in Halifax Regional Municipality.
- Of these collisions, 67 involved bicycles.
- The remaining 153 incidents were strictly vehicle/pedestrian collisions, with 157 pedestrian victims.
  
- **TOTAL VEHICLE/PEDESTRIAN COLLISIONS IN HRM: 153**
- **TOTAL VEHICLE/PEDESTRIAN VICTIMS IN HRM: 157**
  
- **TOTAL VEHICLE/PEDESTRIAN COLLISIONS IN HRM IN OCTOBER 2015: 24**

Note: This report presents strictly vehicle/pedestrian collisions and excludes those incidents involving bicycles.

# Snapshot

2015	
Month	# Incidents
January	24
February	14
March	12
April	15
May	7
June	15
July	6
August	14
September	22
October	24
November	
December	
<b>TOTAL YTD</b>	<b>153</b>

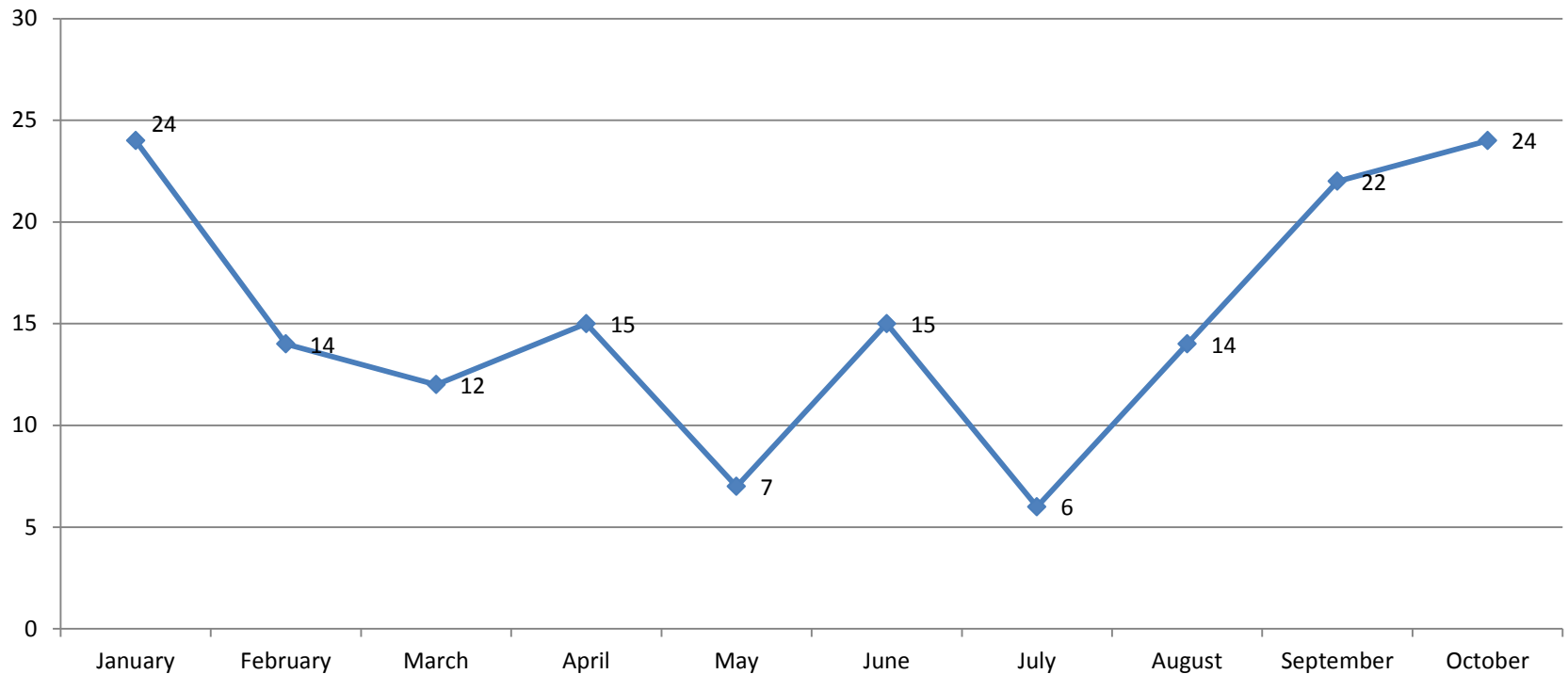
January – October 2015	
Type*	# SOTs
Driver	56
Pedestrian	4
Pending / SUI	0
No SOT	93
<b>TOTAL</b>	<b>153</b>

\* Excludes SOTs unrelated to collision  
(e.g., no insurance)

# Trends

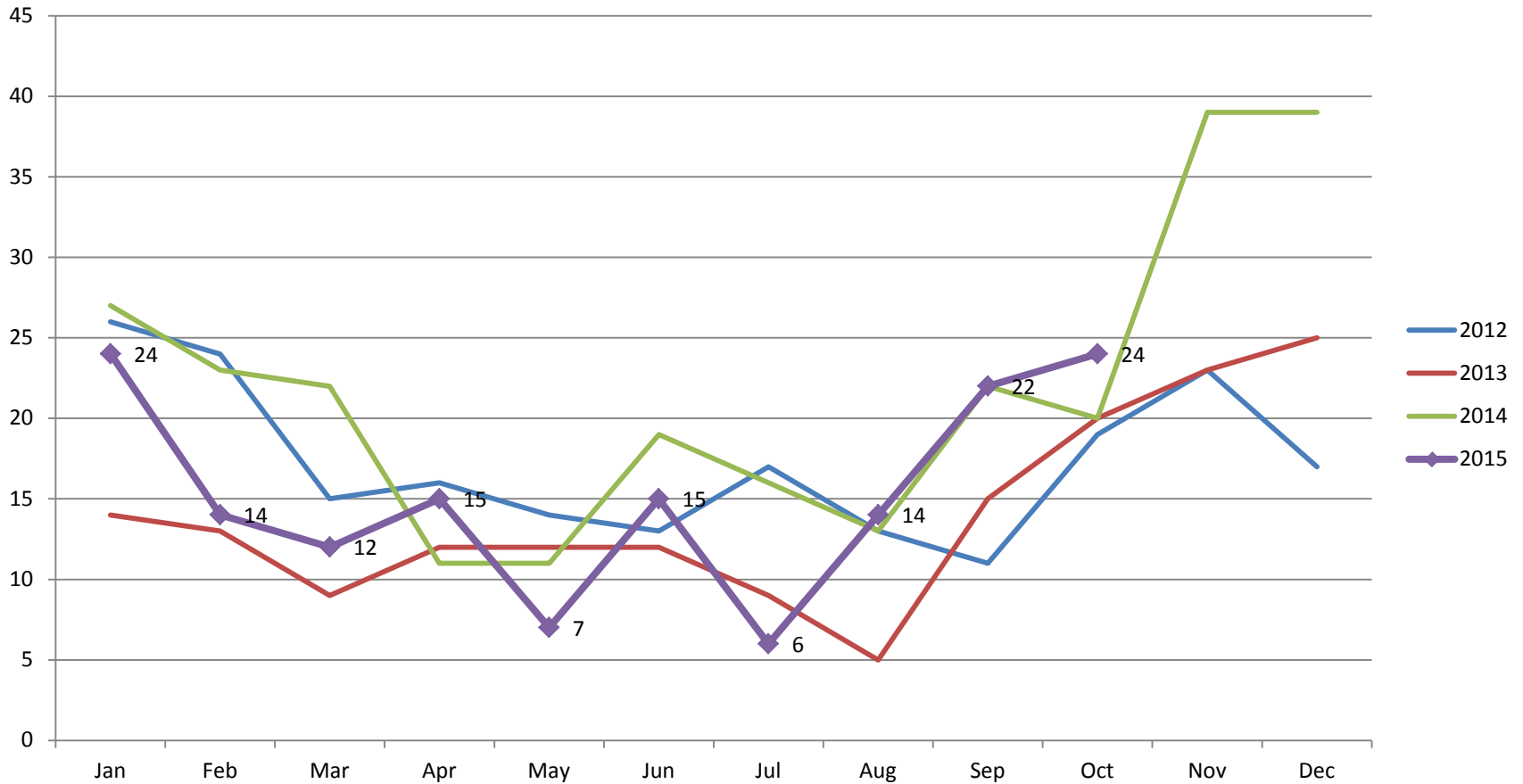
Vehicle/pedestrian collisions have increased by 2 incidents since September; however, there were 31 fewer incidents in January-October 2015 compared to the same period in 2014.

**Vehicle/Pedestrian Collisions  
January-October 2015**



# Trends

Vehicle/Pedestrian Collisions  
2012-2015



# Divisions & Districts

## HRP

Central, East and West Divisions saw a reduction in the number of reported collisions in January-October 2015 compared to the same period in 2014.

## RCMP Halifax District

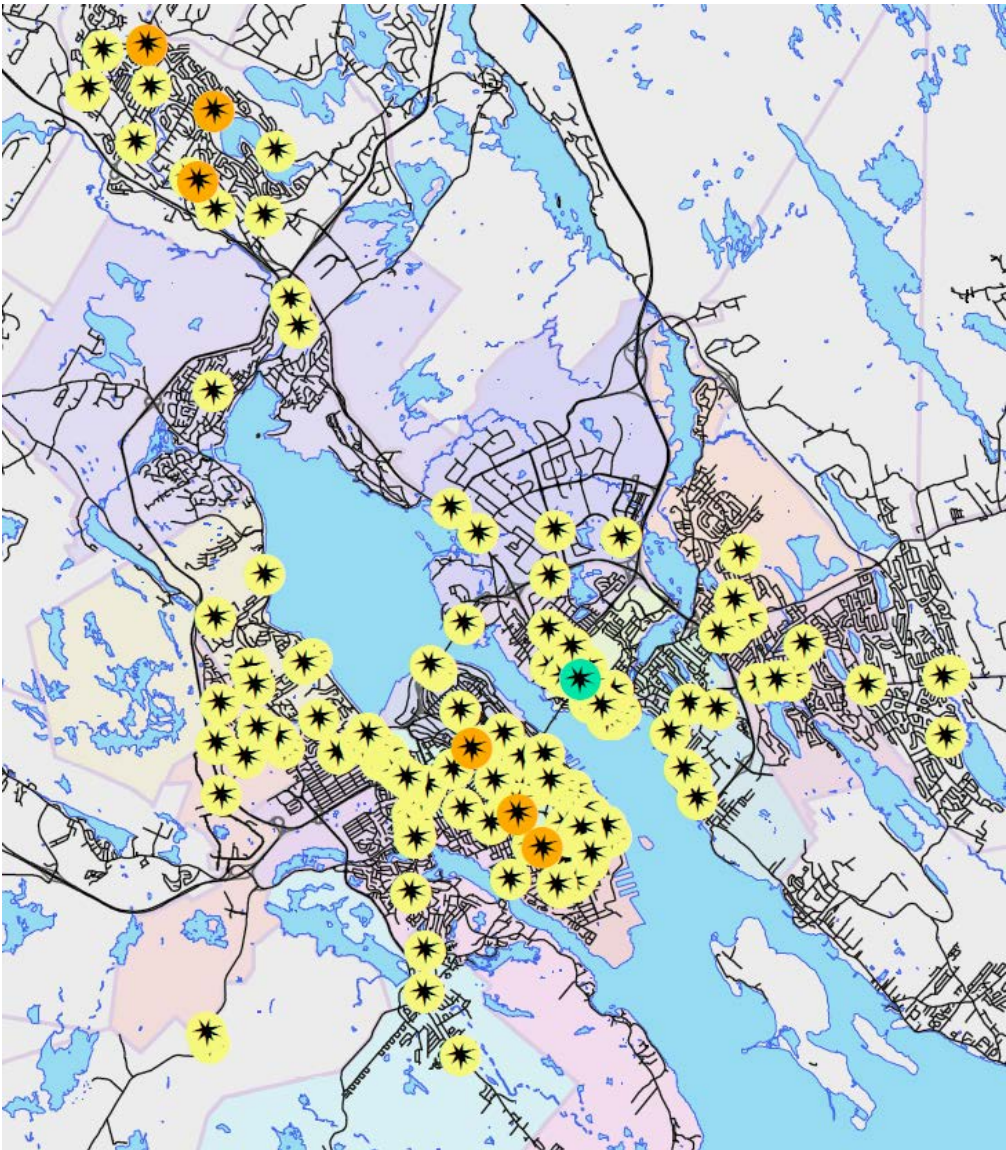
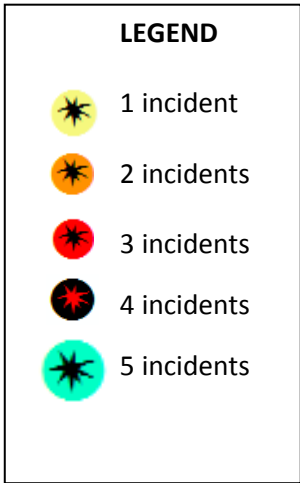
RCMP Halifax District had 8 more collisions in January-October 2015 compared to the previous year.

## HRM

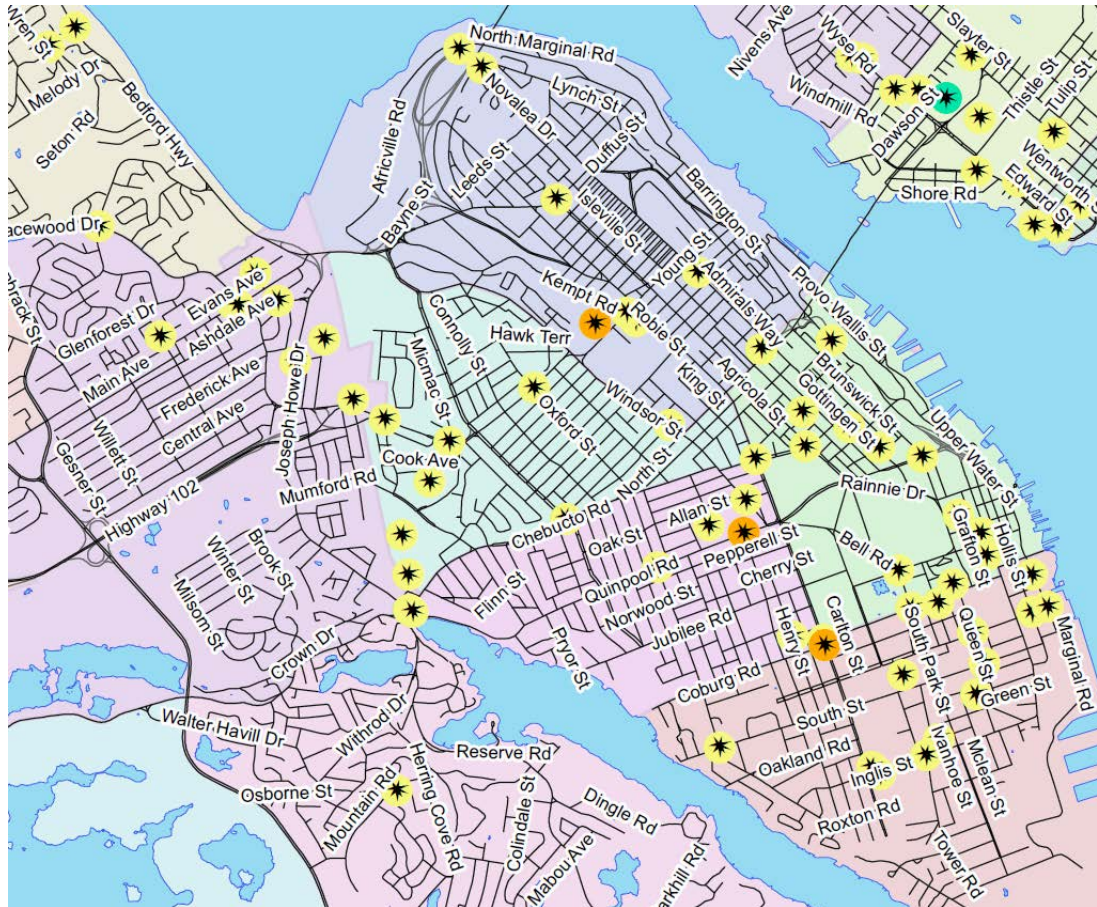
In HRM there was a 16.85% decrease in the number of reported incidents in January-October 2015 compared to January-October 2014.

January-October			
DIVISION/DISTRICT	2014	2015	Change
Central	69	56	↓
East	44	42	↓
West	57	33	↓
<b>HRP</b>	<b>170</b>	<b>131</b>	<b>↓ 22.94%</b>
Cole Harbour	2	4	↑
Sackville	11	16	↑
Musquodoboit Hbr.	0	0	
North Central	0	0	
Sheet Harbour	0	0	
Tantallon	1	2	↑
<b>RCMP</b>	<b>14</b>	<b>22</b>	<b>↑ 57.14%</b>
<b>HRM TOTAL</b>	<b>184</b>	<b>153</b>	<b>↓ 16.85%</b>

# HRP Area



# Central Division

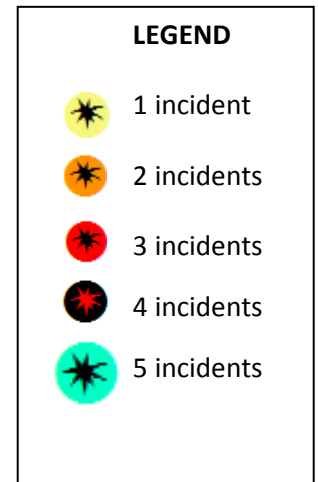
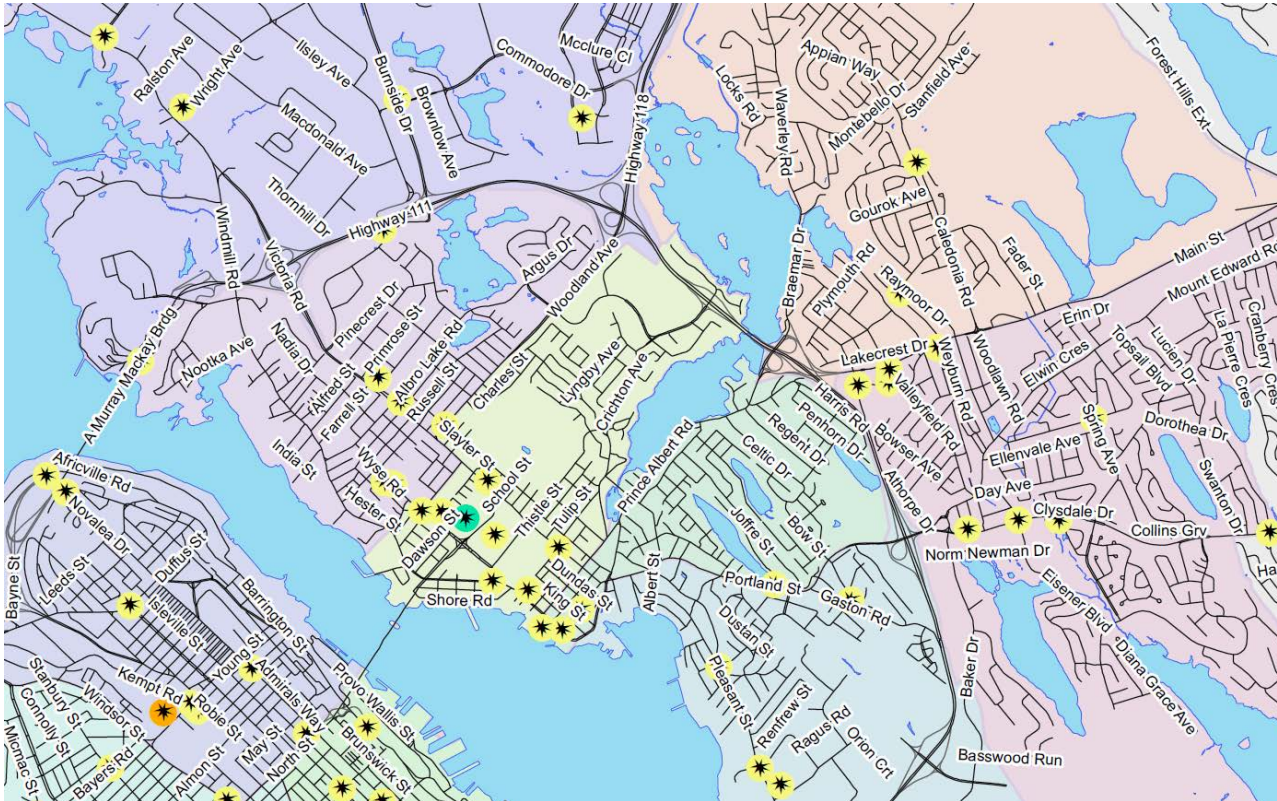


## LEGEND

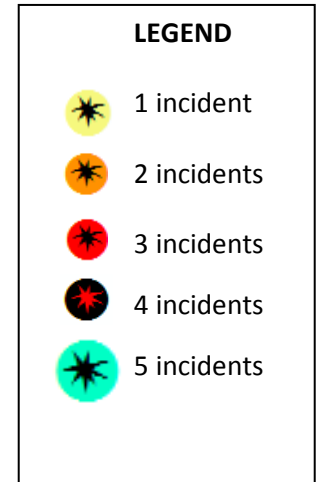
-  1 incident
-  2 incidents
-  3 incidents
-  4 incidents
-  5 incidents



# East Division

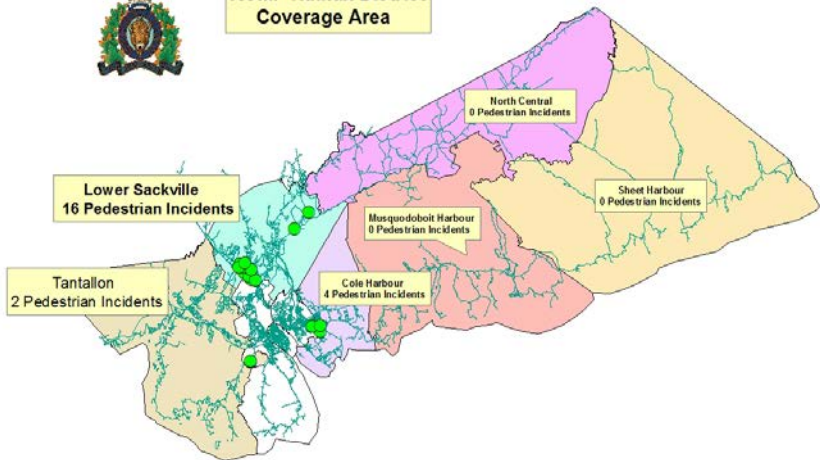


# West Division

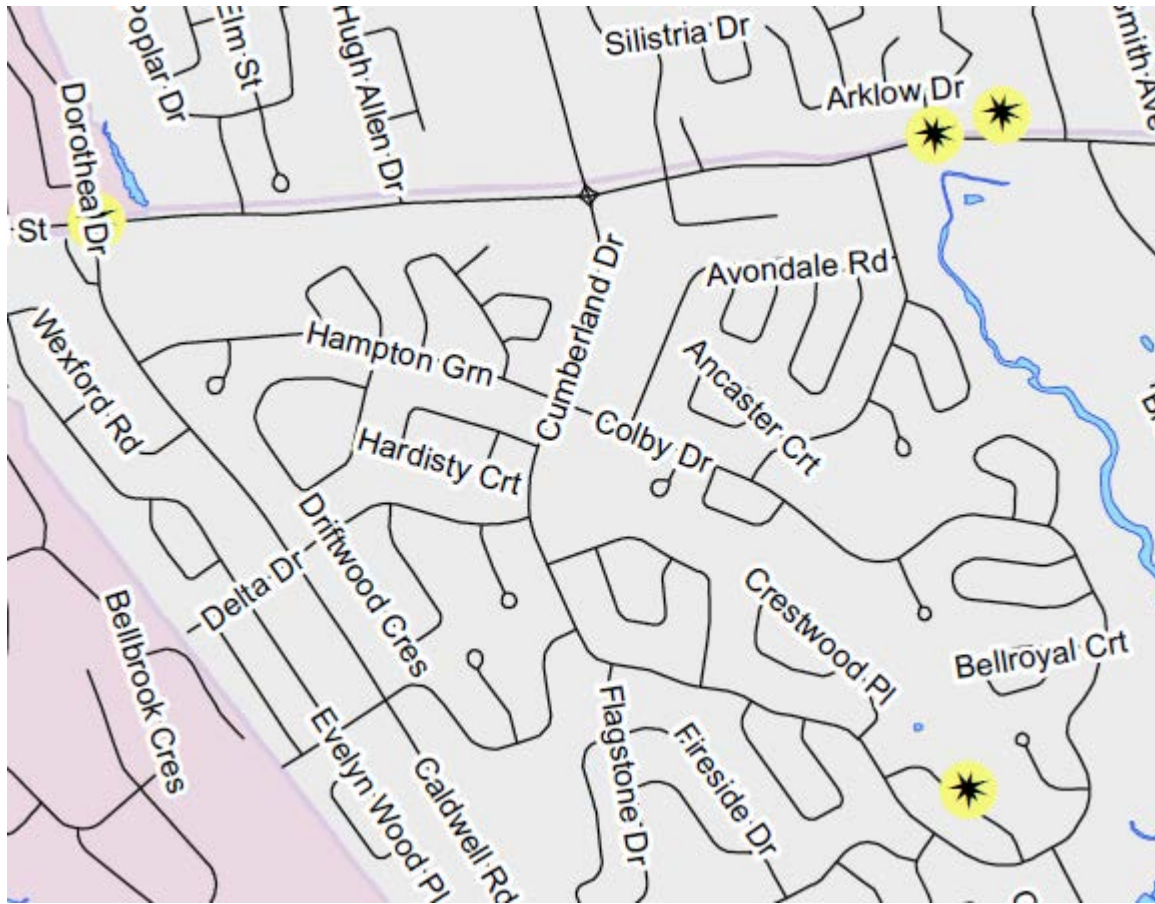




### RCMP Halifax District Coverage Area



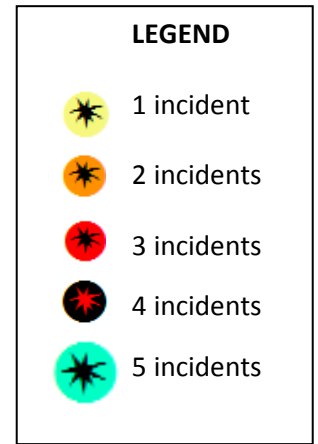
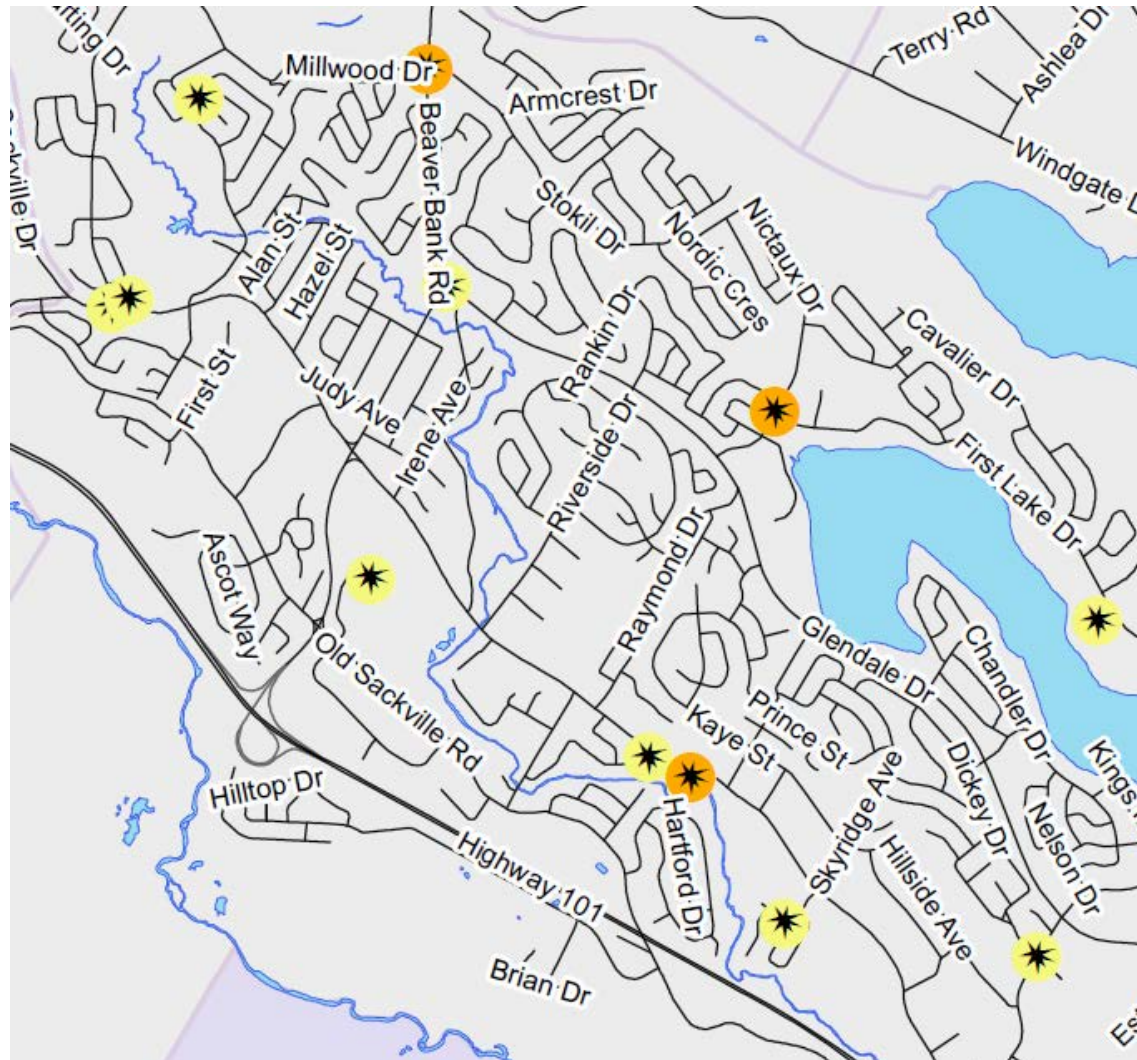
# Cole Harbour



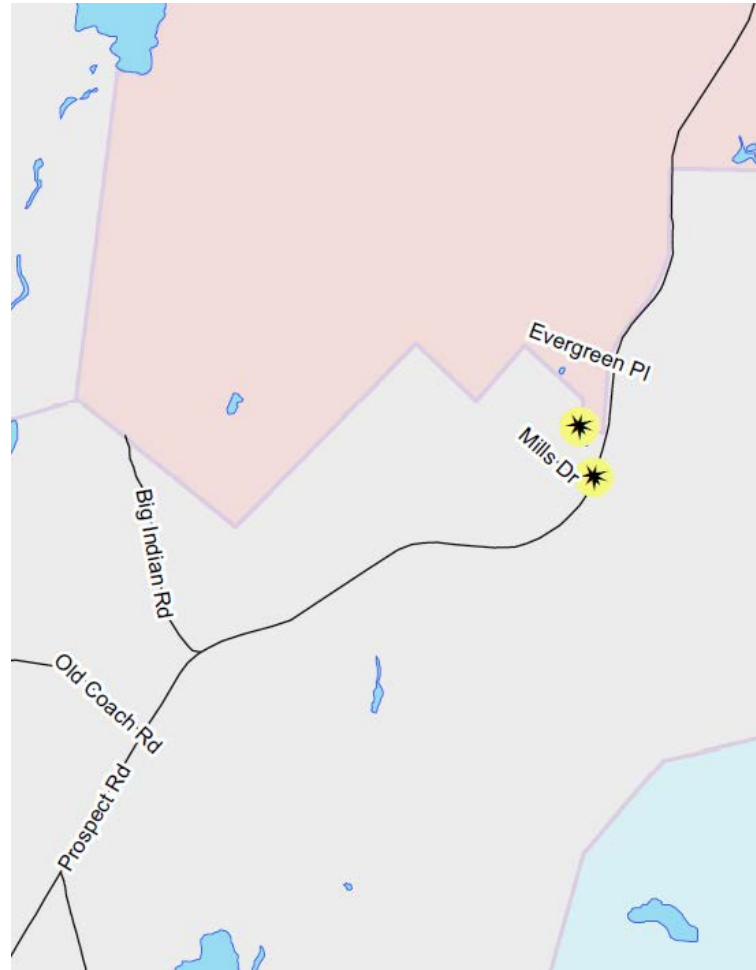
## LEGEND

- 1 incident
- 2 incidents
- 3 incidents
- 4 incidents
- 5 incidents

# Sackville



# Tantallon



## LEGEND

- 1 incident
- 2 incidents
- 3 incidents
- 4 incidents
- 5 incidents

# Collision Types

A smaller proportion of vehicle/pedestrian collisions took place in crosswalks in January-October 2015 compared to the previous year.

The majority of incidents (57.72%) in January-October 2015 did not involve cars turning at an intersection.

January-October		
COLLISION TYPE	2014	2015
Crosswalks	113 (61.41%)	82 (53.59%)

January-October 2015		
Turn Direction	#	%
Left	45	30.20%
Right	18	12.08%
No Turn	86	57.72%
Unknown	4	
<b>TOTAL</b>	<b>153</b>	

% rates exclude unknown cases

# Injuries

76.44% of the 157 pedestrian victims experienced either no injury or minor injury in the reported incidents in January-October 2015.

HRM has had two pedestrian fatalities so far this year.

No driver injuries were reported.

January-October 2015		
INJURY TYPE (PEDESTRIANS)	#	%
No Injury	44	28.03%
Minor	76	48.41%
Moderate	24	15.29%
Severe	3	1.91%
Fatality	2	1.27%
Unknown	8	5.10%
<b>TOTAL</b>	<b>157</b>	

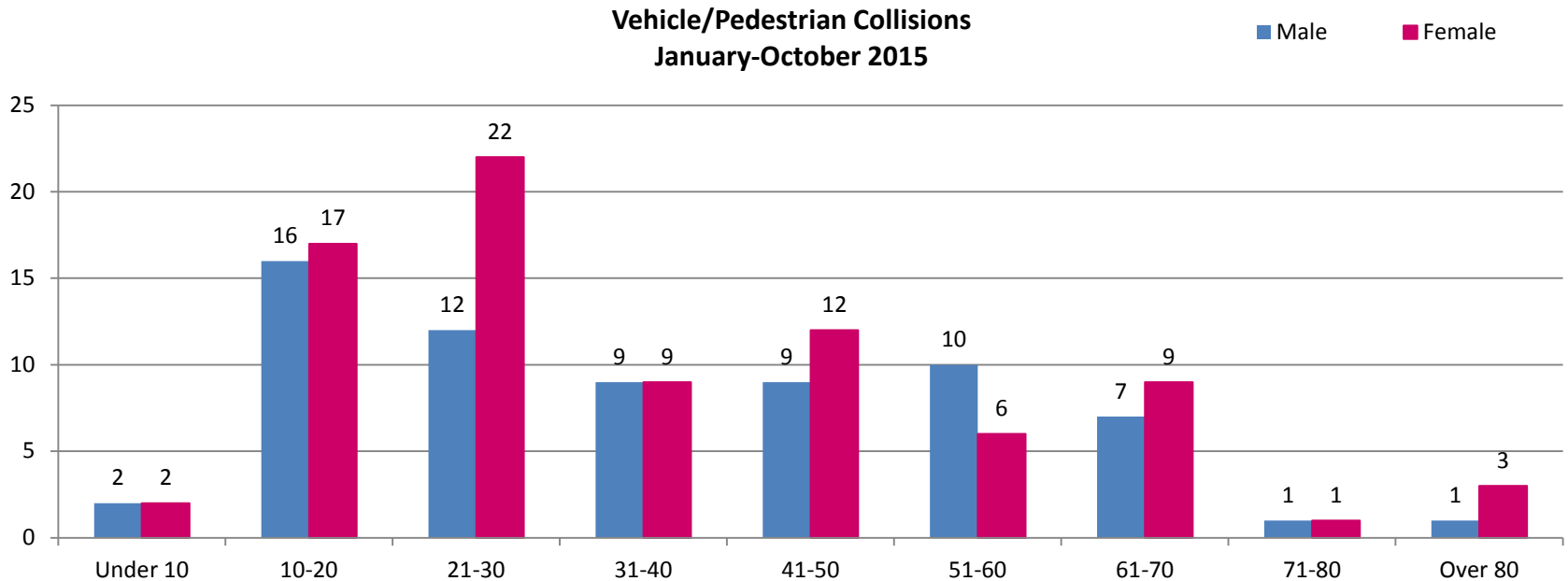


# Pedestrian Characteristics

52.87% of victims were female.

27.2% of female victims were in the 21-30 years age range.

23.9% of male victims were in the 10-20 years age range.



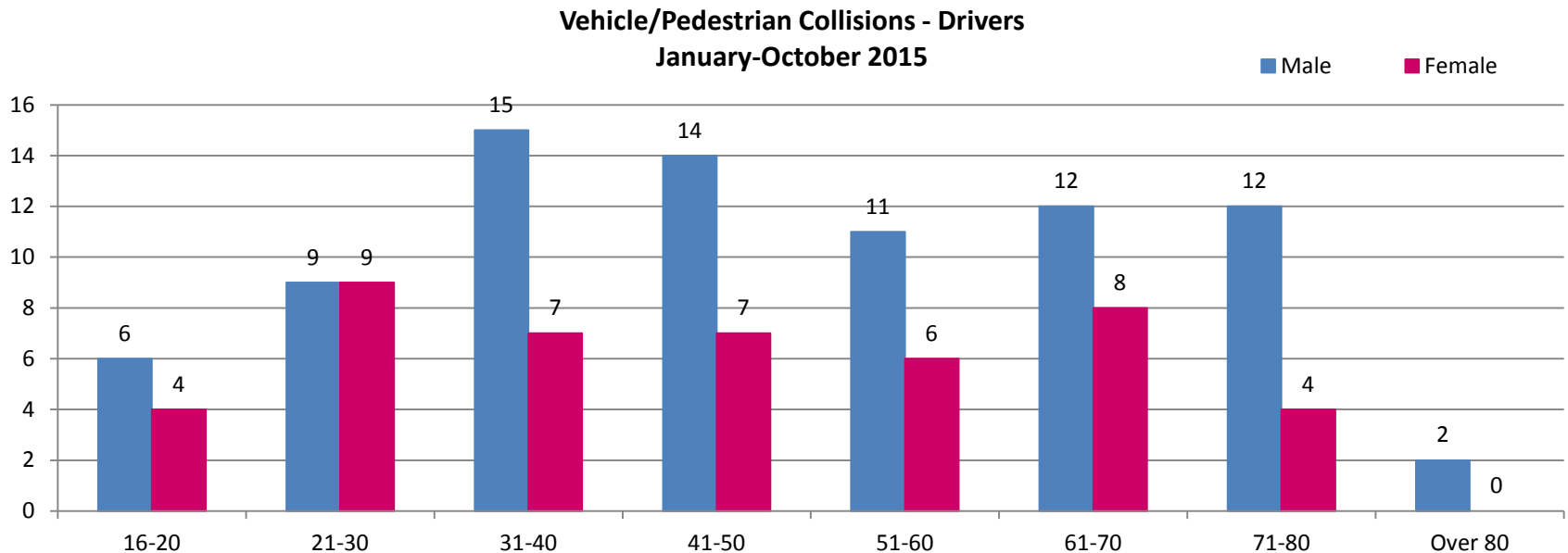
\* Above chart and figures exclude 9 cases where victim age is unknown

# Driver Characteristics

30.99% of drivers were in the 31-40 year age ranges.

Males accounted for 65.3% of drivers involved in the reported vehicle/pedestrian collisions.

This is in contrast to the proportion of males of approximate driving age in HRM, which is nearly 48% according to the HRM 2011 census.



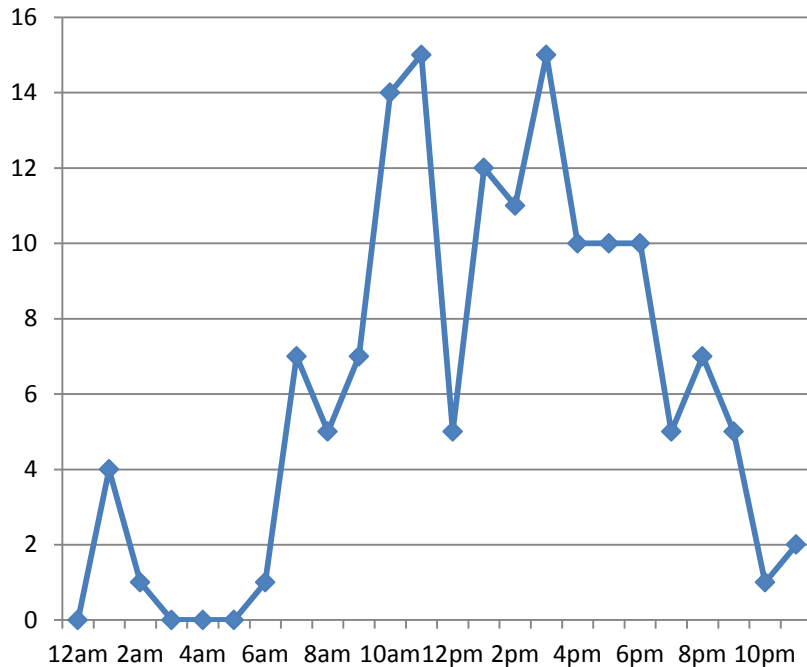
\* Above figures/chart excludes 27 cases where driver sex and/or age is unknown

# Peak Collision Times

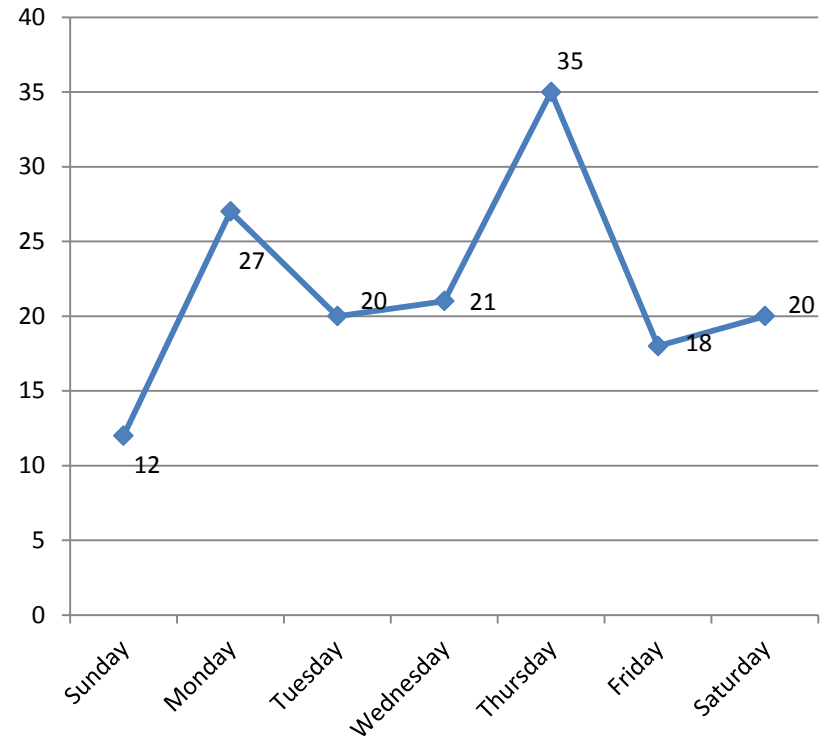
In January-October 2015 the 11am-12pm and 3pm-4pm timeframes saw the highest number of reported collisions.

Thursdays were peak days for vehicle/pedestrian collisions.

**Time of Day**  
January-October 2015



**Day of Week**  
January-October 2015



# Weather & Lighting Conditions

70.8% of the reported collisions in January-October 2015 occurred during clear and/or sunny weather conditions.

5% took place during winter conditions.

75% of the collisions took place during daylight.

44% of the collisions took place during daylight with clear and/or sunny weather conditions.

Note: excludes 33 cases where weather conditions are unknown.

