

# Maritime Centre 2.0

## Reimagining Streetscape of Halifax's Business Core



Preliminary Presentation to DRC  
September 15, 2016



# Maritime Centre 2.0

## Design Features

- A 36ft high, completely redesigned pavilion at ground level
- Reintroducing an overlooked space in the streetscape of Barrington
- Attempt to address and mitigate the wind affect surrounding the building
- Unique coloured glass to complement the stained glass of our neighbour St. Matthew's United Church
- Thoughtfully designed entrances increase access and invite people into the space

# Maritime Centre 2.0

## Design Features

- Indoor and outdoor seating areas
- Small scale streetscape design to be in keeping with historic scale of retail activity along Barrington Street
- Bring more natural light inside the building
- Colourful shadows cast inside to reflect shimmering water and sky





## Neighbourhood Context



## Neighbourhood Context





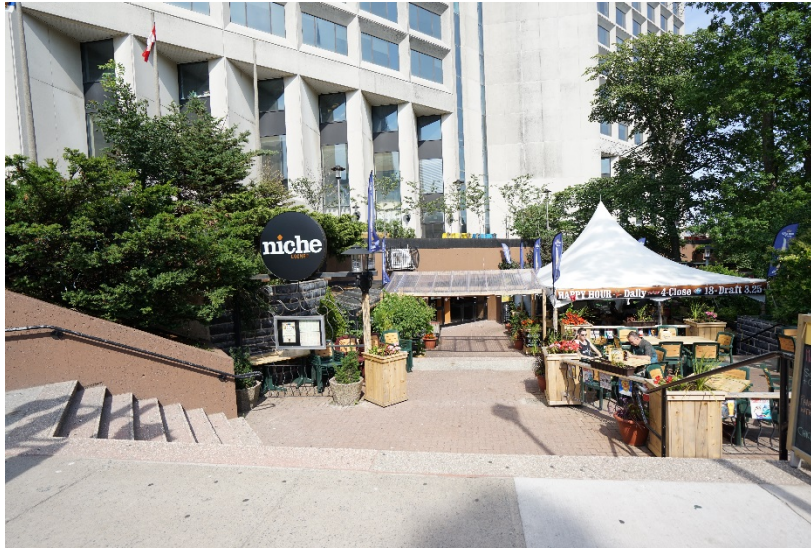
## Neighbourhood Context



## Neighbourhood Context

A | 49





## The Building Today



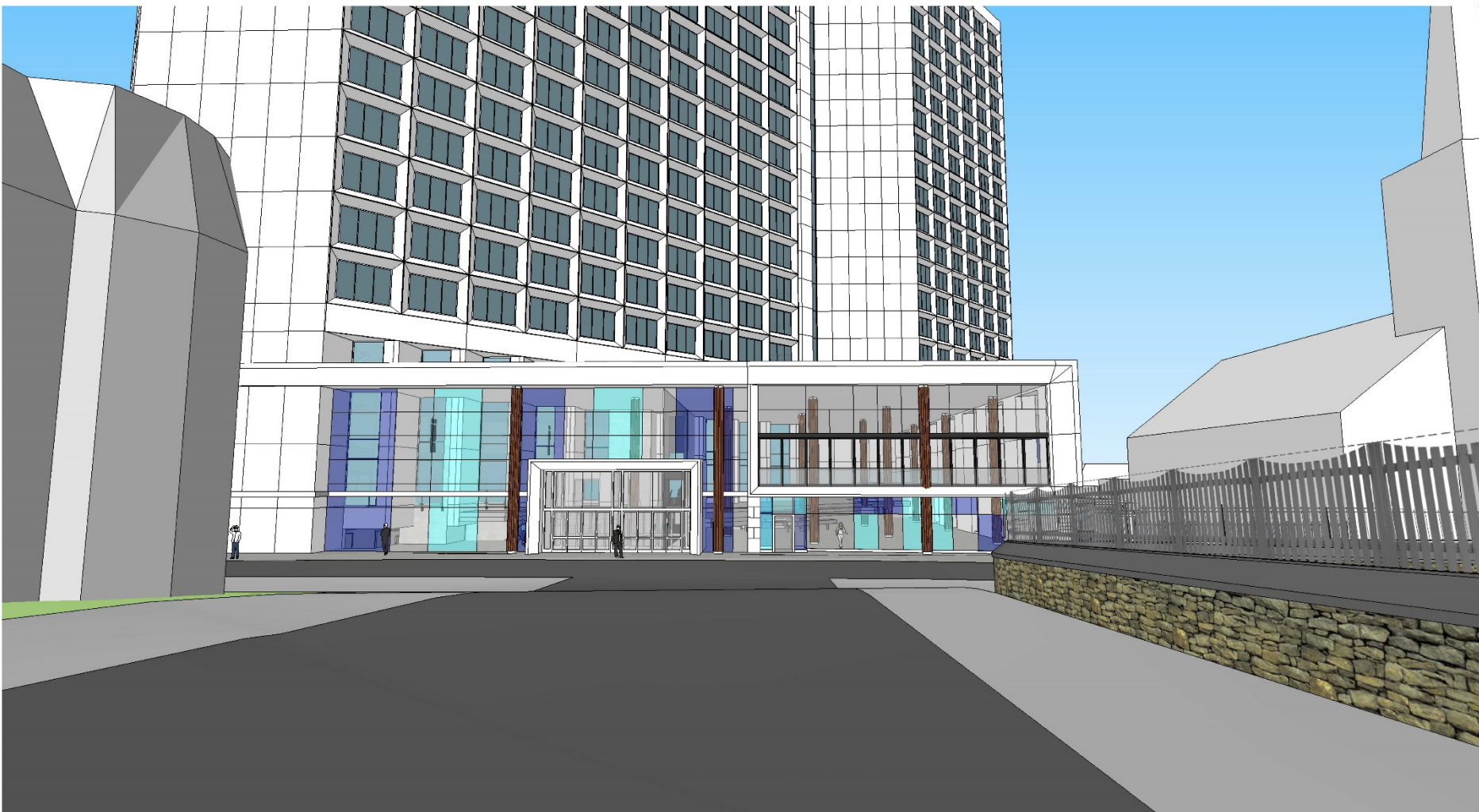


## The Building Today

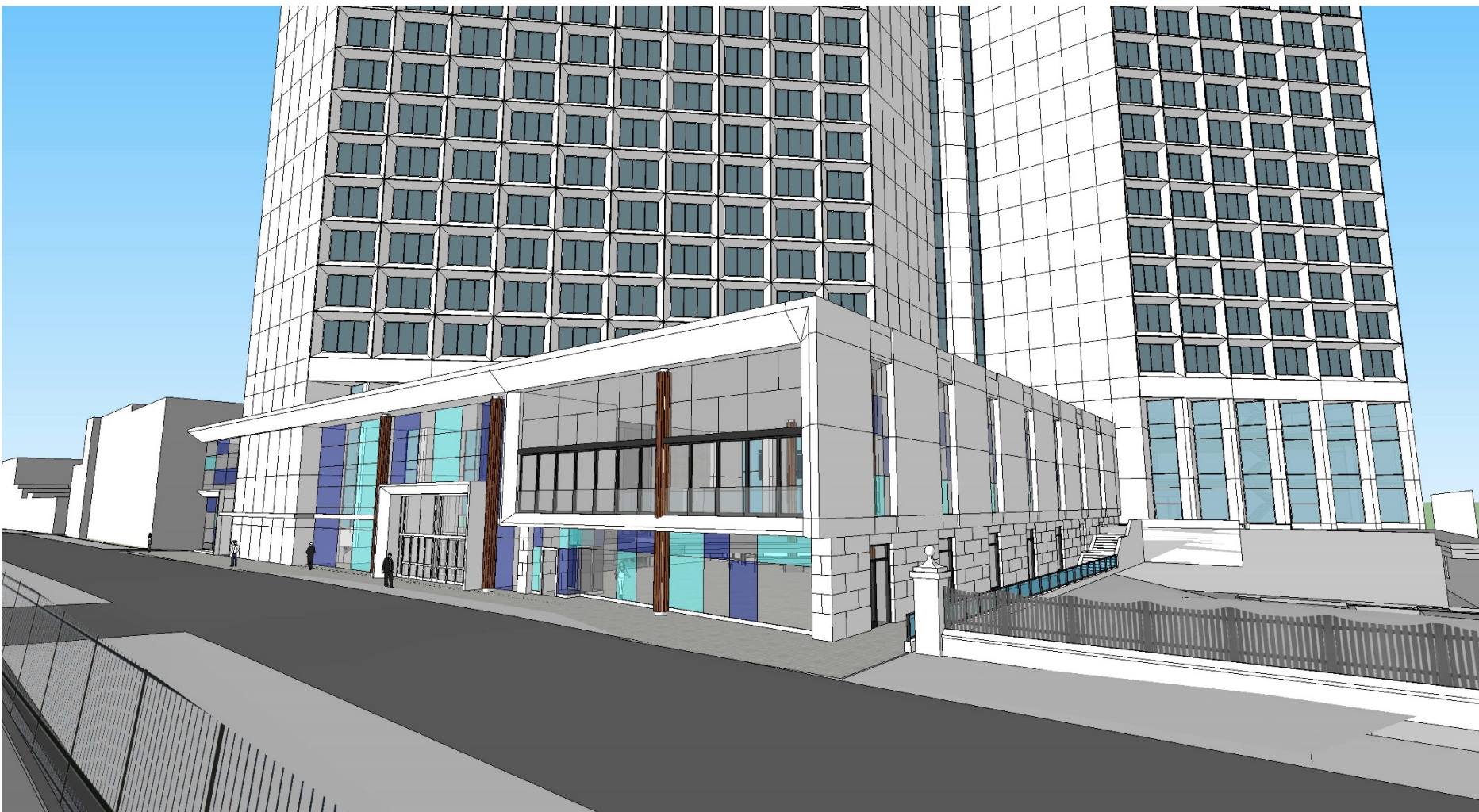


## The Building Today











## Neighbourhood Context







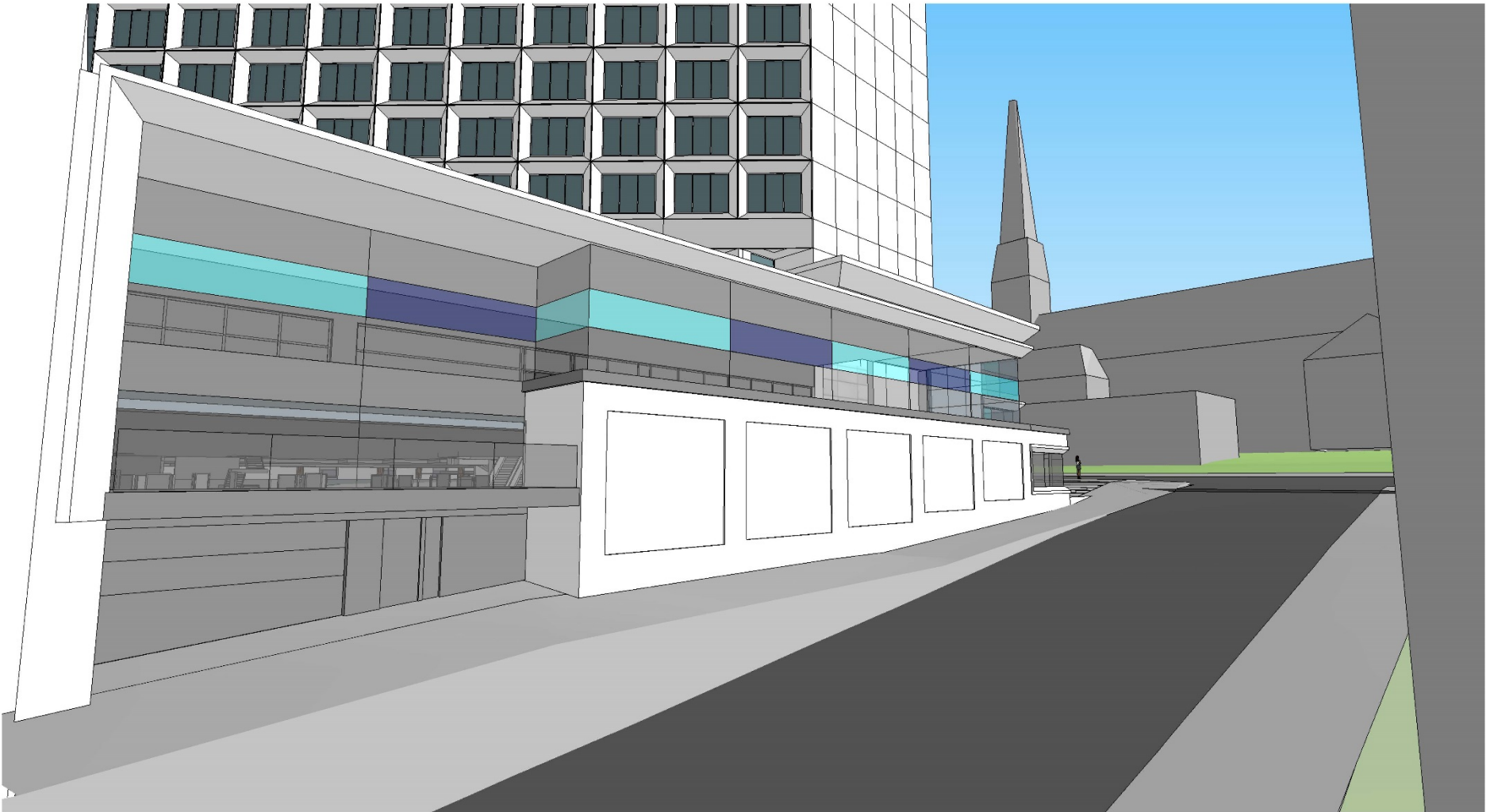
## Neighbourhood Context







# Point of Discussion



# Maritime Centre 2.0

## Design Features

- A 36ft high, completely redesigned pavilion at ground level
- Reintroducing an overlooked space in the streetscape of Barrington
- Attempt to address and mitigate the wind affect surrounding the building
- Unique coloured glass to complement the stained glass of our neighbour St. Matthew's United Church
- Thoughtfully designed entrances increase access and invite people into the space



# Maritime Centre 2.0

## Design Features

- Indoor and outdoor seating areas
- Small scale streetscape design to be in keeping with historic scale of retail activity along Barrington Street
- Bring more natural light inside the building
- Colourful shadows cast inside to reflect shimmering water and sky