

Overview of Facility Projects

- Project 1 – Canada Games Oval
- Project 2 – Bedford Hammonds Plains Community Centre
- Project 3 – Community Facility Master Plan Update
- First Two
 - contain recommendations, final decisions will happen with 11/12 Budget Plans
- Third
 - Info update only to share budget implications in future budgets
 - No decision required today



BIG ICE CANADA GAMES OVAL

Report to Regional Council
March 29, 2011

More than a Municipal Service

- ⦿ “electrifying”
- ⦿ “brought city to life”
- ⦿ “I feel like I live in a cool place”
- ⦿ “I can’t remember last time I saw so many people enjoying themselves... in winter, during NIGHTIME”
- ⦿ “a Christmas gift to the City”

Measurements

- Over 100,000 attendance
- Top HRM web page – even more than transit schedules
- CRA survey 84% support permanent
- 30% said they or family member used it
- Participations rates similar across HRM
- E-mails, letters – over 82% for
- A Save the Oval Web site formed– over 9000 names

Performance of Refrigeration Units

- ⦿ Operated 77 days, 44.5 public recreation skating
- ⦿ Oval was subjected to extreme weather events – heavy rain, snow, freezing rain, fog, etc.
- ⦿ Ice quality usually good
- ⦿ Extreme weather – opened again 48 hrs
- ⦿ Heavy snow – opened again 12-36 hrs

Long Term Arena Strategy Committee

- Due to overwhelming response, support, made recommendation in advance of report
- Citizen's response - met qualities sought destination rink
- Recommended 400m track be made permanent in it's current location, subject to additional due diligence

Background



Construction of Oval

- Refrigerated ice surface to ensure Games events
- Make open to public use before and after
- Options redeploy equipment afterwards
- Regional destination ice surface in urban core
- Later add network community rinks

Community Space

- Social capital & urban placemaking often abstract & idealistic
- Oval - perfect example & impact on city life can be achieved
- People talked about oval as pride of place, gathering, social impact

Community Space - Diversity

- ⦿ Attracting families, seniors, teens, children, individuals, couples, groups
- ⦿ Novice, experienced
- ⦿ Recent immigrants
- ⦿ All income ranges
- ⦿ From across Municipality, visitors
- ⦿ Able bodied, skaters with disabilities

Why so Popular?

- ⦿ Has caught people's imagination
- ⦿ Has tapped into deep seated desire for Canadian winter experience
- ⦿ Unstructured play, festival-like atmosphere
- ⦿ Dependable quality of ice, place to meet
- ⦿ Venue where citizens themselves brought city to life

Cited Reasons For Oval

- Healthy, accessible, outdoors
- All ages, skill levels, backgrounds, financial situations, all skating together
- New immigrants & fellow citizens experience Canadian pastime -not intimidated by skill levels
- Seeing people skating, walking skates over shoulder

Cited Reasons For Oval

- ⦿ Feel Commons more safe
- ⦿ Great, effective use of public space
- ⦿ Location – central, walkability, transportation available
- ⦿ Easy to find, visible
- ⦿ Oval shape
- ⦿ Turned Commons into vibrant place people want to go usually barren, undesirable in winter

Cited Reasons Against Oval

- ⦿ HRM cannot afford
- ⦿ Feel has limited benefits
- ⦿ Feel skaters have plenty of lakes they can use
- ⦿ Feel plenty of indoor arenas they can go to
- ⦿ Concerned about traffic, parking, noise, etc.
- ⦿ Against privatization of public space, must be free to all
- ⦿ Want Commons protected as green space, no structures

Sport Use

- ⦿ Athletes, coaches, officials praised facility
- ⦿ Athletes set 97 new records
- ⦿ Great location
- ⦿ Capable hosting regional, national, international events – to Junior World Level
- ⦿ Interest to use as secondary use – training, competitions
- ⦿ Financial support local training

Discussion



Size & Configuration

- ⦿ Original concept, much smaller design, configuration for urban core destination
- ⦿ Reasonable concept but popularity and feedback caused a rethink
- ⦿ Crowd size – festival-like gatherings
- ⦿ Liked oval configuration
 - More enjoyable experience than traditional shape
 - Better suited different skills, ages at same time
 - Felt safer

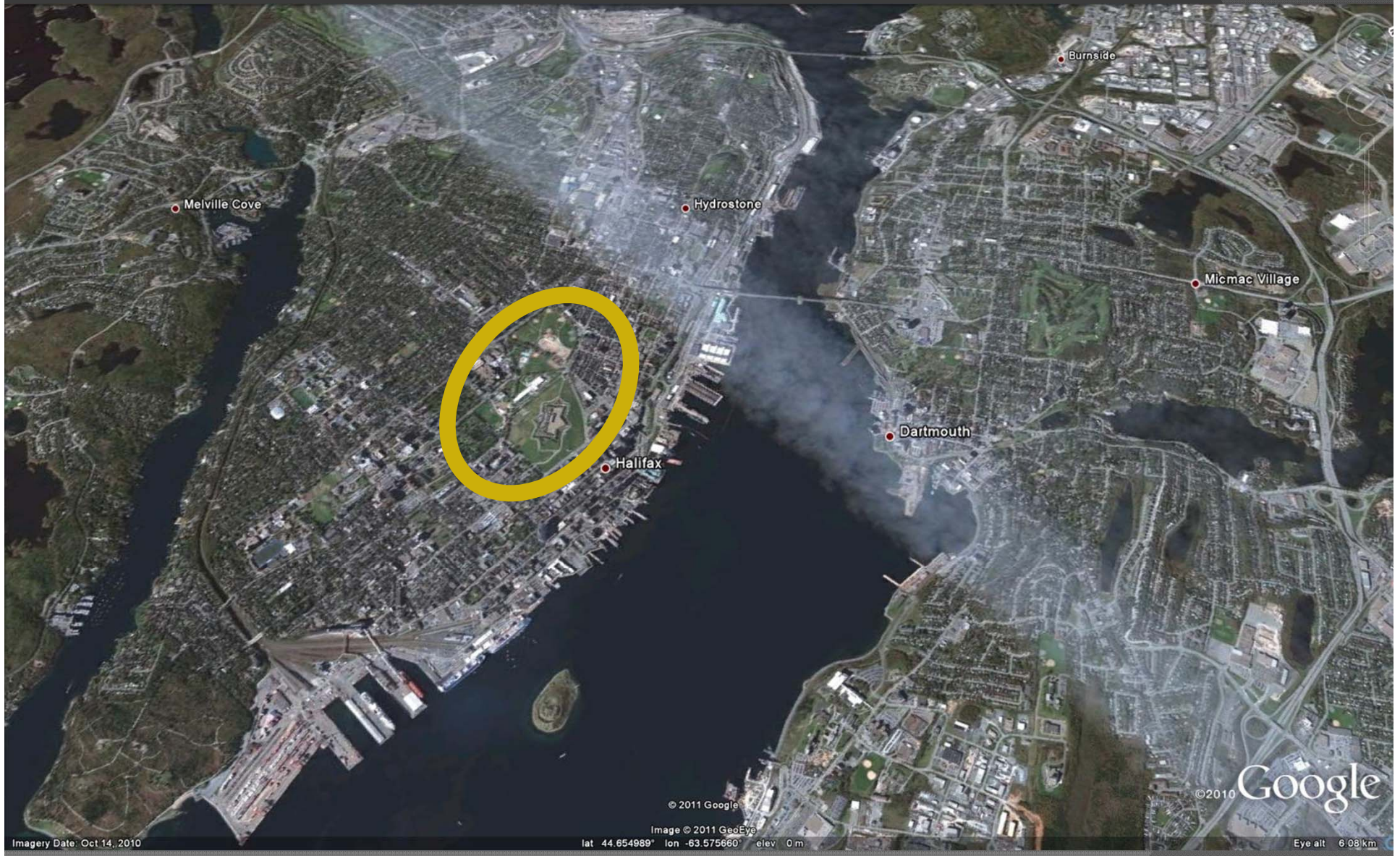
Size & Configuration

- ⦿ Added benefit – meets field of play for speed skating
- ⦿ Athletes in Atlantic Canada must go to Quebec, West to train
- ⦿ new winter sport use all ages
- ⦿ Provides winter tourism opportunity
- ⦿ Additional new summer activities

Site Options

- ◉ Why North Common for temporary oval?
- ◉ 2011 CG Host Society desired high profile site
 - Centrally located, reasonably flat
 - Ability to accommodate crowds
 - Heighten visibility of Games
 - Highlight speed skating as winter sport
 - Easily accessed free venue – public participation
- ◉ North Common fit requirements, large enough for 400 metre track

Site Selection



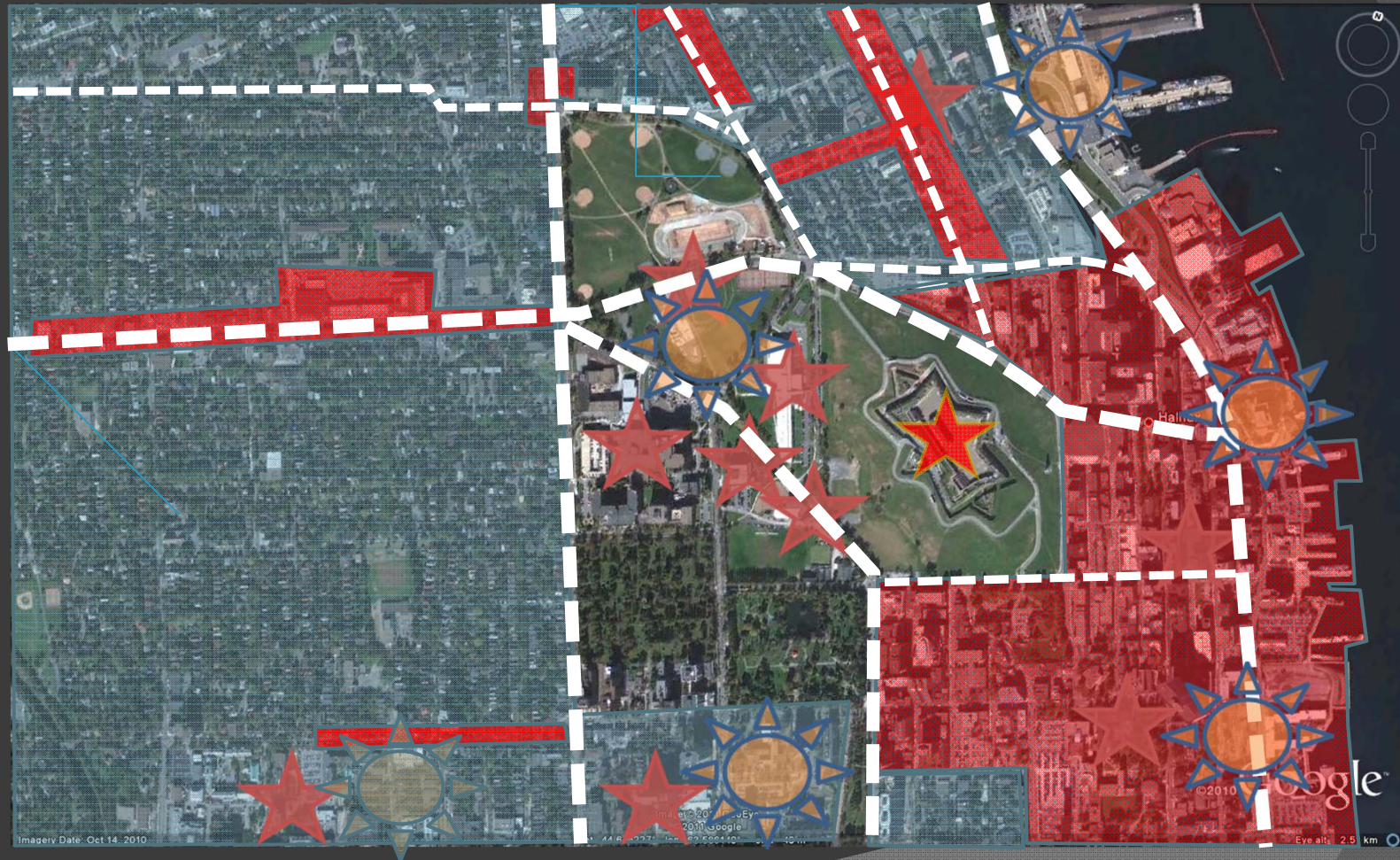
Site Selection Criteria

Conditions for Success

- Suitability - Large/Flat
- Full Program
- Impact on other uses
- Ownership
- Proximity
 - Users
 - Support
 - Critical Mass
 - Access
- “Trip-ability”



Proximity





Central Common
Wanderers Grounds



North Common



Impact on the North Common

- Displacement of bantam ball field and ultimate/soccer field
- Need to integrate oval with prominence and open nature of the Common
 - Grading
 - Fencing
 - Permanent Facilities
 - Green



Policy

*Extracts from the Common Plan
Policies Approved by Halifax City Council, Halifax Common Plan (1994)*

Private Commercial Use and Funding Policies

- 7.1 The city recognizes and supports the contribution made by privately sponsored cultural and recreational events on the Halifax Common.
- 7.2 Private use of city-owned open space for temporary special events will be permitted through Council approval. In giving its permission, Council will be satisfied that the commercial and private event is for the benefit of the city and that it satisfies all goals, objectives and policies in this plan.
- 7.3 In permitting sponsorship of temporary events on the Common, the city will ensure that any promotion or advertising during the event is consistent with and supportive of the overall cultural and social values of the city and its citizens. Council may identify specific products and causes that will not be permitted.
- 7.4 The city will investigate ways to keep the public informed in advance of privately sponsored events.
- 7.5 Commercial sales will be permitted in conjunction with temporary events, subject to acceptable community standards, as judged by Council.
- 7.6 Private donation of permanent facilities should be permitted provided this does not restrict public use and the display of the donor's name meets city standards.
- 7.7 The city will encourage joint ventures with private or non-profit groups to develop and operate cultural and recreational facilities on the Common.
- 7.8 User charges, where applicable, will be the same as for the rest of the City.

Site and Enhancement

- Will require more than simply adding concrete base
- Other improvements require care from aesthetic & functional point of view
- Need to blend in harmoniously with rest of North Common

Site Enhancement

⦿ Structures

- Quality design, materials, construction
- Right design treatment
- Sense of pride and ownership

Site Enhancement

⦿ Landscape

- Modify plans to enhance pathways, lighting & landscape to encompass oval
- Make it attractive year round as opposed to existing temporary look
- Additional spring/summer/fall use by children
- Roller blading, walking, cycling, etc.
- Infield can be Frisbee, other informal activities
- Can introduce whole new users Commons

Budget Implications - Operating

- ⦿ CD – Program related
 - \$150,000*
 - \$50K realigned
- ⦿ TPW – operations related
- ⦿ - \$260,000
- ⦿ Total \$410,000 (\$360,000 new)

Comparisons to other Public Spaces

Beaches

- Free access
- Open 61 days
- Attendance 132,500
- Cost \$467,000

Oval

- Free access
- Open 44.5 days to public
- Attendance over 100,000
- **Projected for 2011/12**
- Free access
- Open up to 90 days
- Attendance could be as high as 180,000
- Plus new summer use
- Cost \$410,000

Phasing of Project

- Phase 1 – hardening the base, some landscaping
- Phase 1 – 2011/12
- Phase 2 – look and feel, enhancing usability
- Phase 2 – 2012/13

Capital Budget Implications – Phase 1

- \$3.75M net new
- Civil work to stabilize site
- Structural slab
- Underground electrical (chillers, lighting)
- Lighting system
- Grading, drainage, landscaping
- Purchase 3 chillers
- Design work required immediately

Phase 1 Timelines

- 2 months – award design contract, complete design, tender documents
- 1 month – tender call, award
- 5 months - construction
- Will utilize advanced capital for design
- Full funding strategy request part of 2011/12 Project Budget
- Timing of essence to start Phase 1 design steps

Capital Budget Implications – Phase 2

- Implementation- 2012/13
- Public consultation - 2011/12
- Approx. \$1.4M – depending on outcome of public engagement
- Amenities: new building to house equipment, washrooms, office, first aid
- Additional landscaping, integration into site

Donations

- ⦿ Numerous interest –how much is donations
- ⦿ One-time or large sums over couple years
- ⦿ Best to be used against capital upgrade
- ⦿ Could do plaques like Public Gardens

Naming Rights, Advertising

- ⦿ What level of interest
- ⦿ Limited informal debate if in “spirit” of Commons
- ⦿ Require Council direction
- ⦿ Naming rights – oval, building
- ⦿ Would determine value and report back
- ⦿ Corporate advertising signs, logos, etc.
- ⦿ Apply against capital project expenses

Recommendations

- Make the oval permanent on North Commons
- Direct staff to include capital & operating funds in proposed 11/12 Budget
- Direct staff to immediately start design Phase 1 funded from advanced capital
- Authorize staff to accept donations towards capital project costs
- Provide direction whether or not to entertain naming rights, advertising

