

11.1.7



PO Box 1749
Halifax, Nova Scotia
B3J 3A5 Canada

Halifax Regional Council
September 4, 2007

TO: Mayor Kelly and Members of Halifax Regional Council

SUBMITTED BY:

A handwritten signature in black ink, appearing to read "Dan English", written over a horizontal line.

Dan English, Chief Administrative Officer

A handwritten signature in black ink, appearing to read "Wayne Anstey", written over a horizontal line.

Wayne Anstey, Deputy Chief Administrative Officer - Operations

DATE: August 13, 2007

SUBJECT: **Request for Permanent Encroachment - Dalhousie University Entrance Sign**

ORIGIN

Application for encroachment on public right of way on University Avenue.

RECOMMENDATION

It is recommended that Halifax Regional Council **approve** the application for permanent encroachment of an entrance sign on University Avenue.

BACKGROUND

Dalhousie University proposes to install an entrance sign on the boulevard of University Avenue west of the Robie Street intersection. As shown in the attached plans, the sign is approximately 7.5 metres long and 5.4 metres wide. It is made of sandstone, ashlar and copper roofing, and stands 4.3 metres at the highest point. Plan LSK-1 also shows the addition of trees in the right of way.

The request for permanent encroachment is presented herein on the basis that such encroachments can only be approved by Council.

DISCUSSION

In general, the HRM right of way is required for municipal purposes, that is pedestrian and vehicular traffic, transit and as a utility corridor. However, University Avenue is a unique street with a wide boulevard and Dalhousie abuts most of the length of the street. The proposed entrance sign will not interfere with Municipal operations, and will improve the visual landscape of the area. In staff's view, the sign encroachment is acceptable in this case.

BUDGET IMPLICATIONS

If approved by Council, the applicant is required to pay a one-time license fee of \$125.00 and an annual encroachment fee of approximately \$125.00.

FINANCIAL MANAGEMENT POLICIES / BUSINESS PLAN

This report complies with the Municipality's Multi-Year Financial Strategy, the approved Operating, Capital and Reserve budgets, policies and procedures regarding withdrawals from the utilization of Capital and Operating reserves, as well as any relevant legislation.

ALTERNATIVES

Council could choose to deny the Encroachment Agreement.

ATTACHMENTS

LSK-1 Layout Plan of Entrance Sign
LSK-2 Plan & Elevation of Entrance Sign

**Request for Permanent Encroachment - Dalhousie University Entrance Sign
Council Report**


- 3 -

September 4, 2007

A copy of this report can be obtained online at <http://www.halifax.ca/council/agendasc/agenda.html> then choose the appropriate meeting date, or by contacting the Office of the Municipal Clerk at 490-4210, or Fax 490-4208.

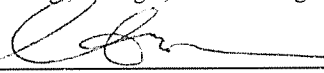
Report Prepared by: Erica Copeland, P.Eng., Design Engineer, Design & Construction, 490-6872
Phil Francis, P.Eng., Manager, Right of Way Engineering, 490-6219

Report Approved by:



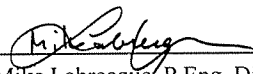
Ken Reashor, P.Eng., Manager, Traffic & Right of Way, 490-6637

Financial Approval by:

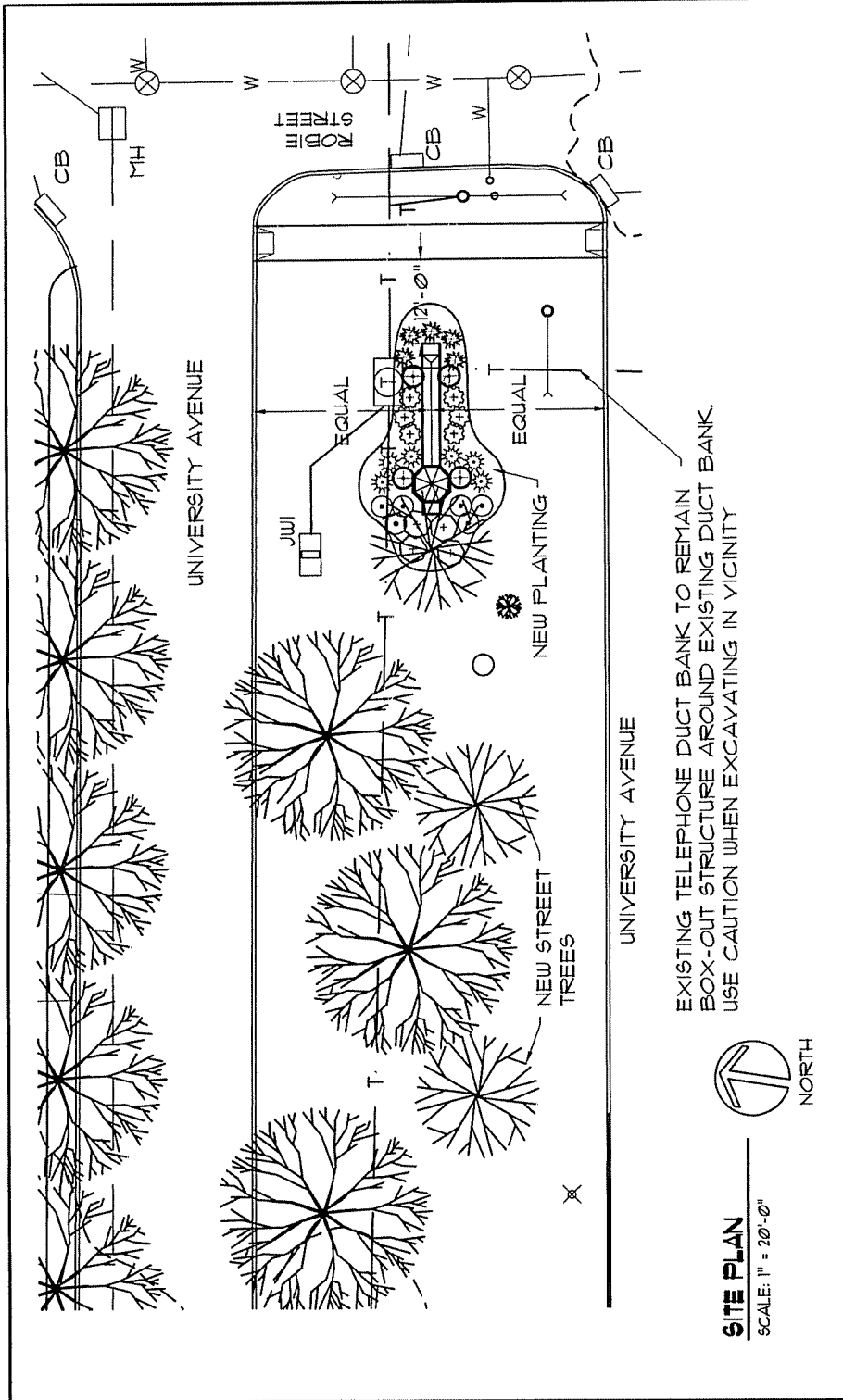


Catherine Sanderson, Senior Manager, Financial Services, 490-1562

Report Approved by:

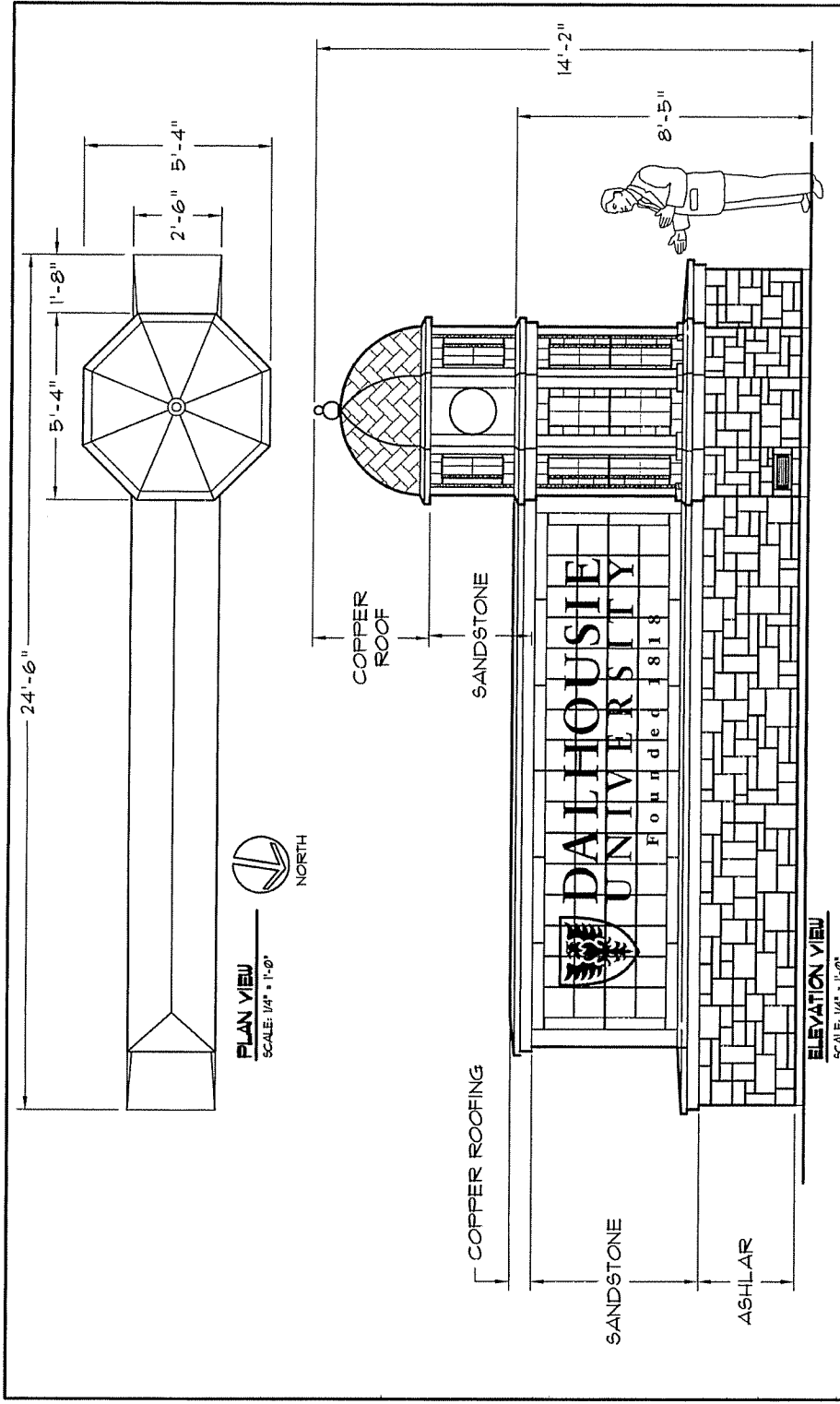


Mike Labrecque, P.Eng., Director, Transportation & Public Works, 490-4855



<p>Vollick McKee Petersmann <small>& ASSOCIATES LIMITED</small></p> <p>LANDSCAPE ARCHITECTURE SITE PLANNING PROJECT MANAGEMENT</p> <p>2030 Gottingen Street Suite 200 Halifax, Nova Scotia Canada B3K 3J9</p> <p>Tel: 902 422 8514 Fax: 902 425 0402 info@vollickmckee.com www.vollickmckee.com</p>	<p>ROBIE STREET CAMPUS SIGN</p> <p>DALHOUSIE UNIVERSITY HALIFAX NOVA SCOTIA</p>		<p>LAYOUT PLAN OF ENTRANCE SIGN</p>	
	<p>SCALE: AS NOTED</p>		<p>DATE: OCTOBER 31, 2005</p>	

S:\Projects\Dalhousie University Projects\05035DAL - Robie Street Campus Sign\05035L



<p>Vollick McKee Petersmann LANDSCAPE ARCHITECTURE SITE PLANNING PROJECT MANAGEMENT</p> <p>2030 Gallaghen Street Suite 200 Halifax, Nova Scotia Canada B3K 3A9 Tel: 902 422 6514 Fax: 902 425 0402 info@vollickmckee.com www.vollickmckee.com</p>	<p>ROBIE STREET CAMPUS SIGN</p> <p>DALHOUSIE UNIVERSITY</p> <p>HALLIFAX NOVA SCOTIA</p>		<p>PLAN & ELEVATION OF ENTRANCE SIGN</p>
	<p>SCALE: AS NOTED</p> <p>DATE: OCTOBER 31, 2005</p>		<p>LSK-2</p>

S:\Projects\Dalhousie University Projects\050355DAL - Robie Street Campus Sign\050355I