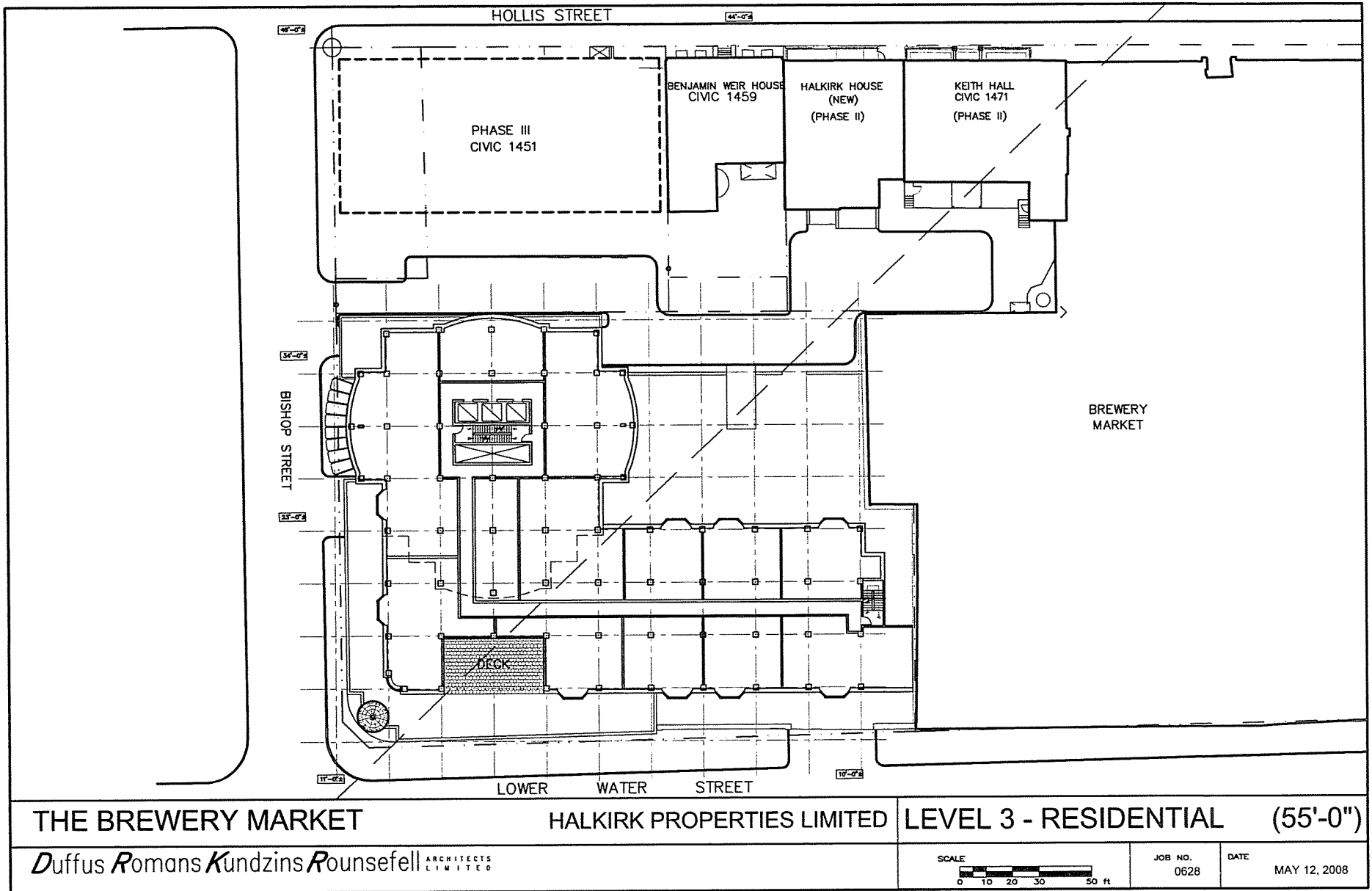
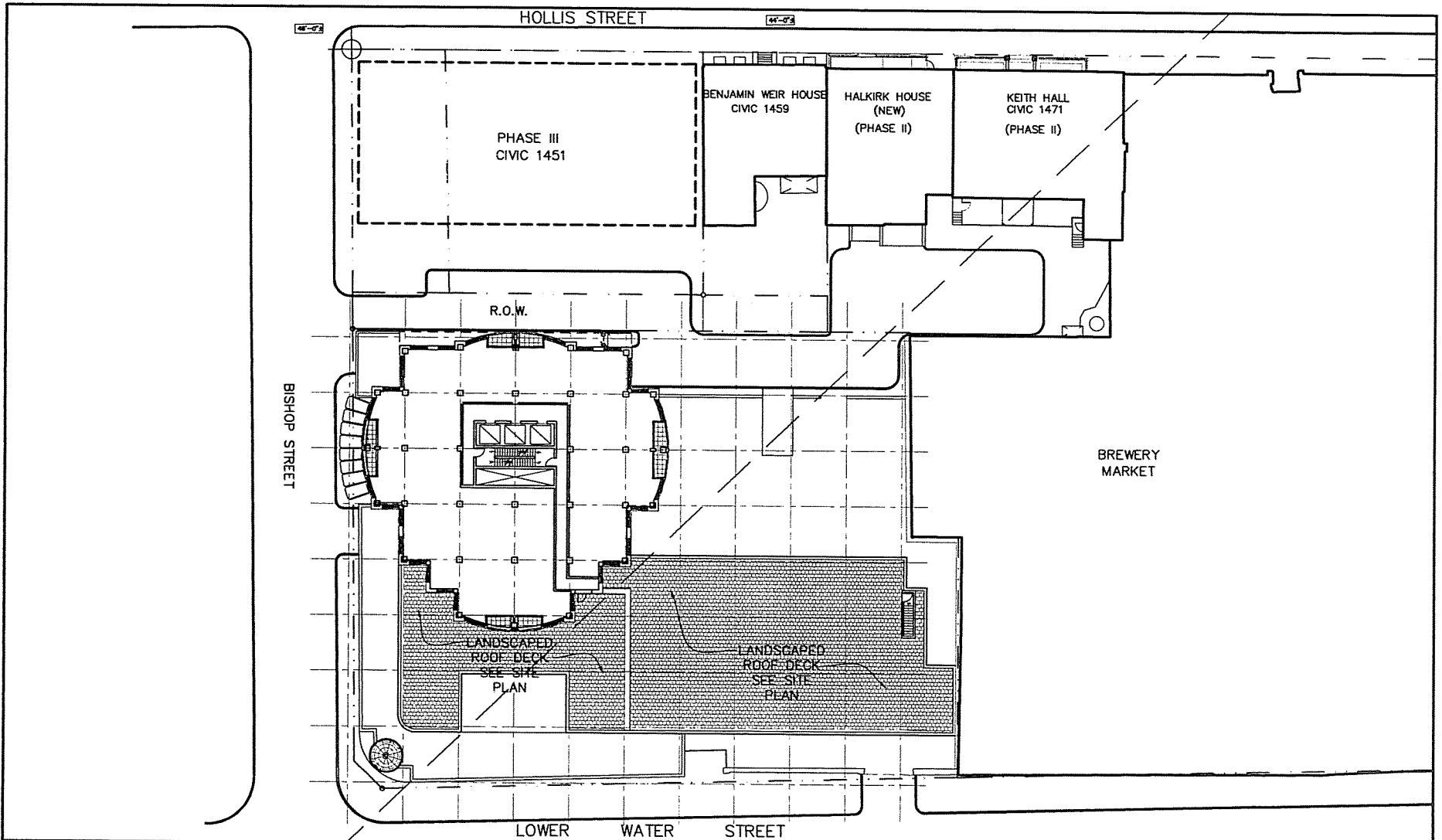


REVISED

Amended pages from Attachment B - circulated at the meeting
May 13, 2008

Re: Item No. 11.1.16 (i)





THE BREWERY MARKET

HALKIRK PROPERTIES LIMITED

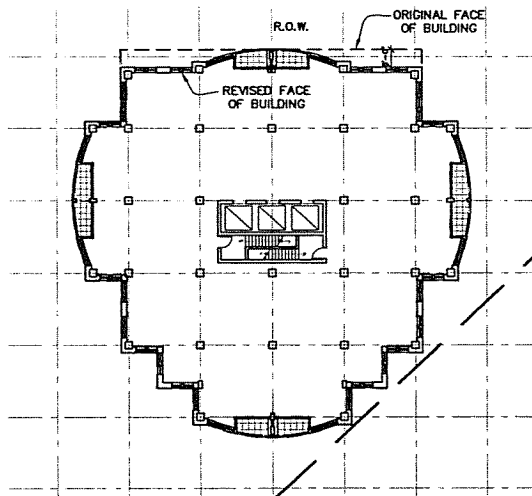
LEVEL 4 - RESIDENTIAL (65'-0")

Duffus Romans Kundzins Rounsefell ARCHITECTS LIMITED

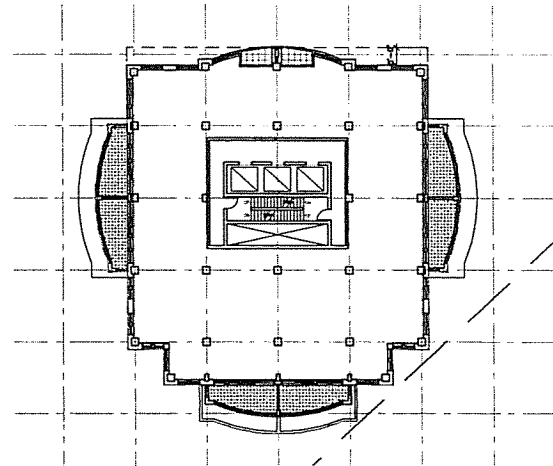


JOB NO.
0628

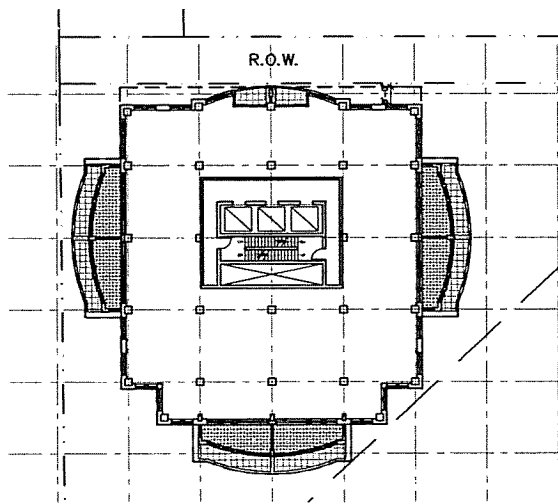
DATE
MAY 12, 2008



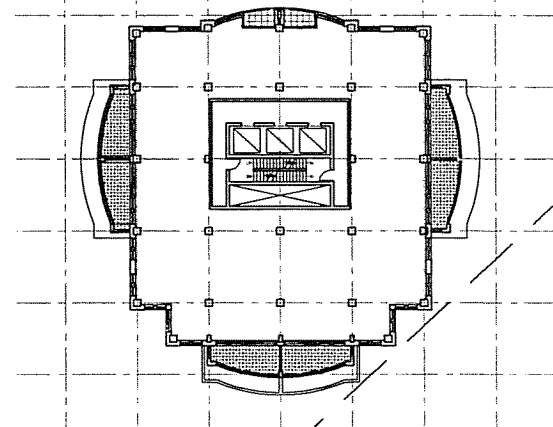
LEVEL 5 TO 11



LEVEL 13



LEVEL 12



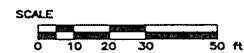
LEVEL 14

THE BREWERY MARKET

HALKIRK PROPERTIES LIMITED

UPPER LEVELS (5-14) - RESIDENTIAL

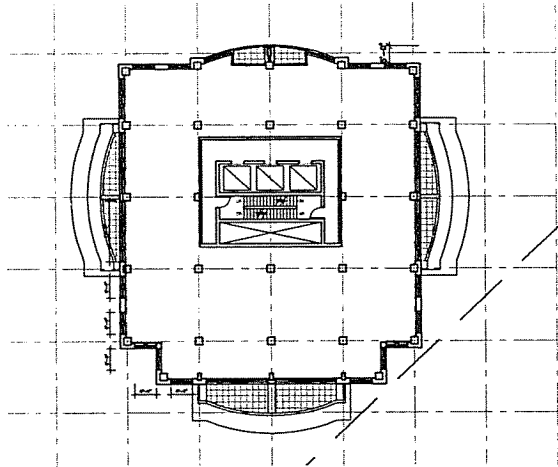
Duffus Romans Kundzins Rounsefell ARCHITECTS LIMITED



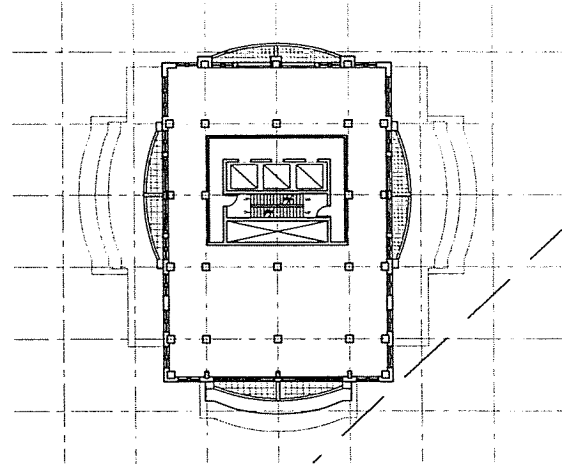
JOB NO.
0628

DATE
MAY 12, 2008

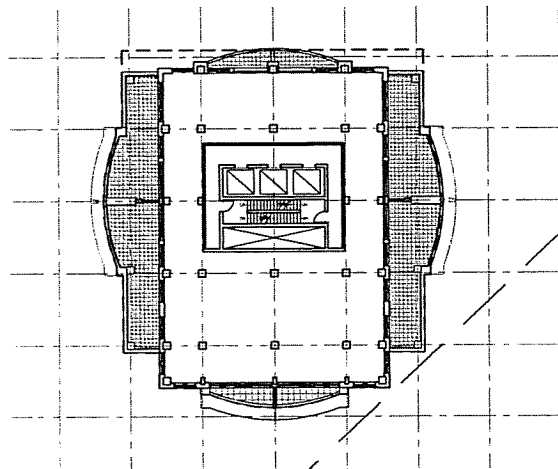
LEVEL 15



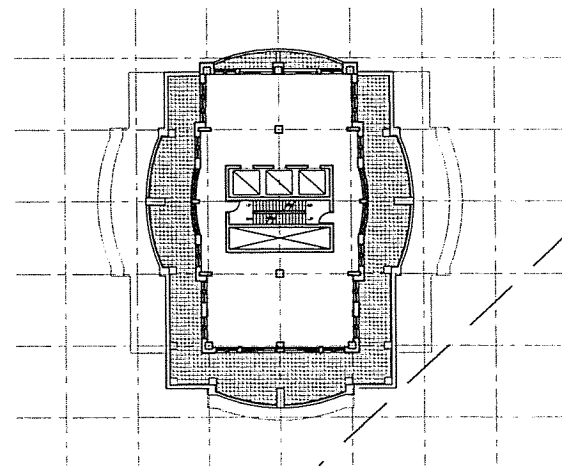
LEVEL 17



LEVEL 16



LEVEL 18



THE BREWERY MARKET

HALKIRK PROPERTIES LIMITED

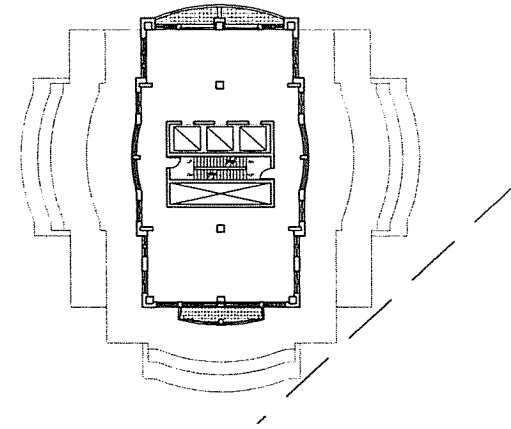
UPPER LEVELS (15 - 18) - RESIDENTIAL

Duffus Romans Kundzins Rounsefell ARCHITECTS LIMITED

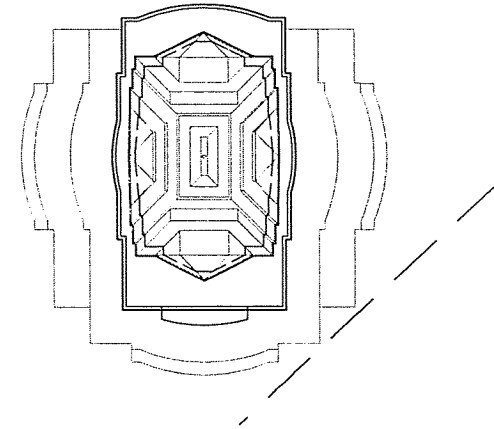


JOB NO.
0628

DATE
MAY 12, 2008



LEVEL 19



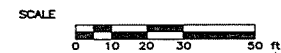
LEVEL PENTHOUSE

THE BREWERY MARKET

HALKIRK PROPERTIES LIMITED

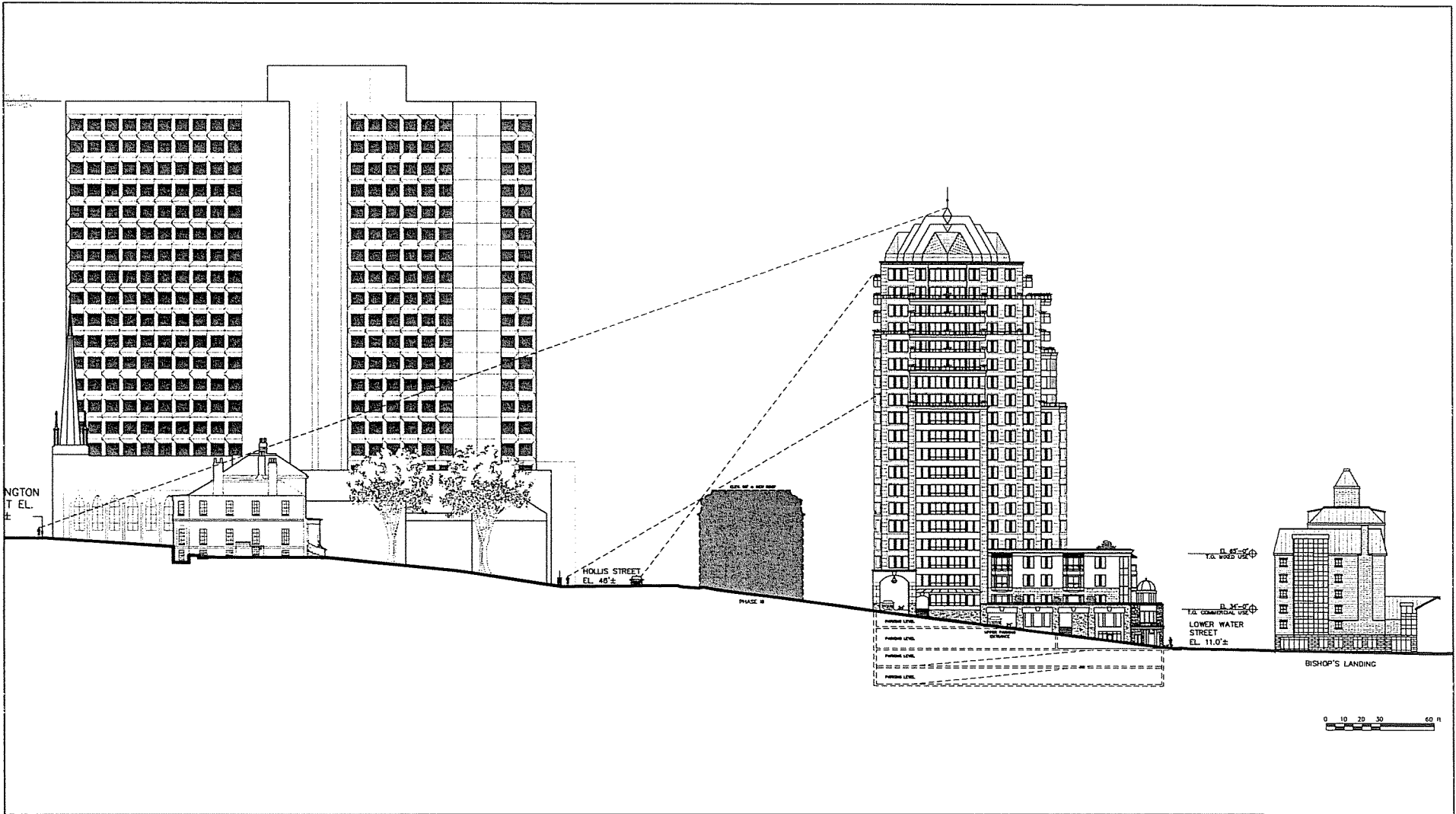
UPPER LEVELS (19&Pent.) - RESIDENTIAL

Duffus Romans Kundzins Rounsefell ARCHITECTS LIMITED



JOB NO.
0628

DATE
MAY 12, 2008



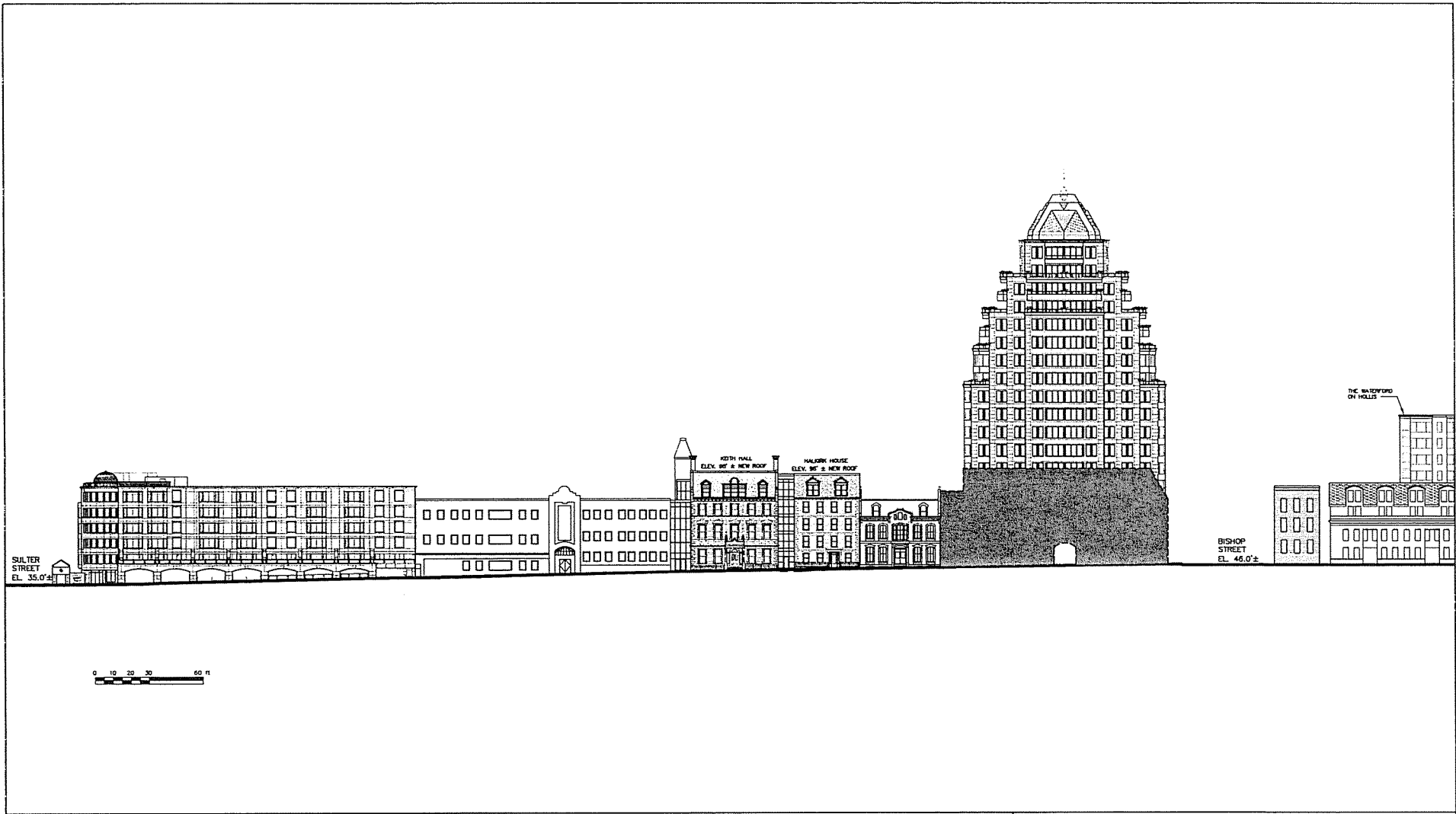
THE BREWERY MARKET - PHASE II
HALKIRK PROPERTIES LIMITED
Duffus Romans Kundzins Rounsefell (P) (S) (C)

BISHOP STREET ELEVATION

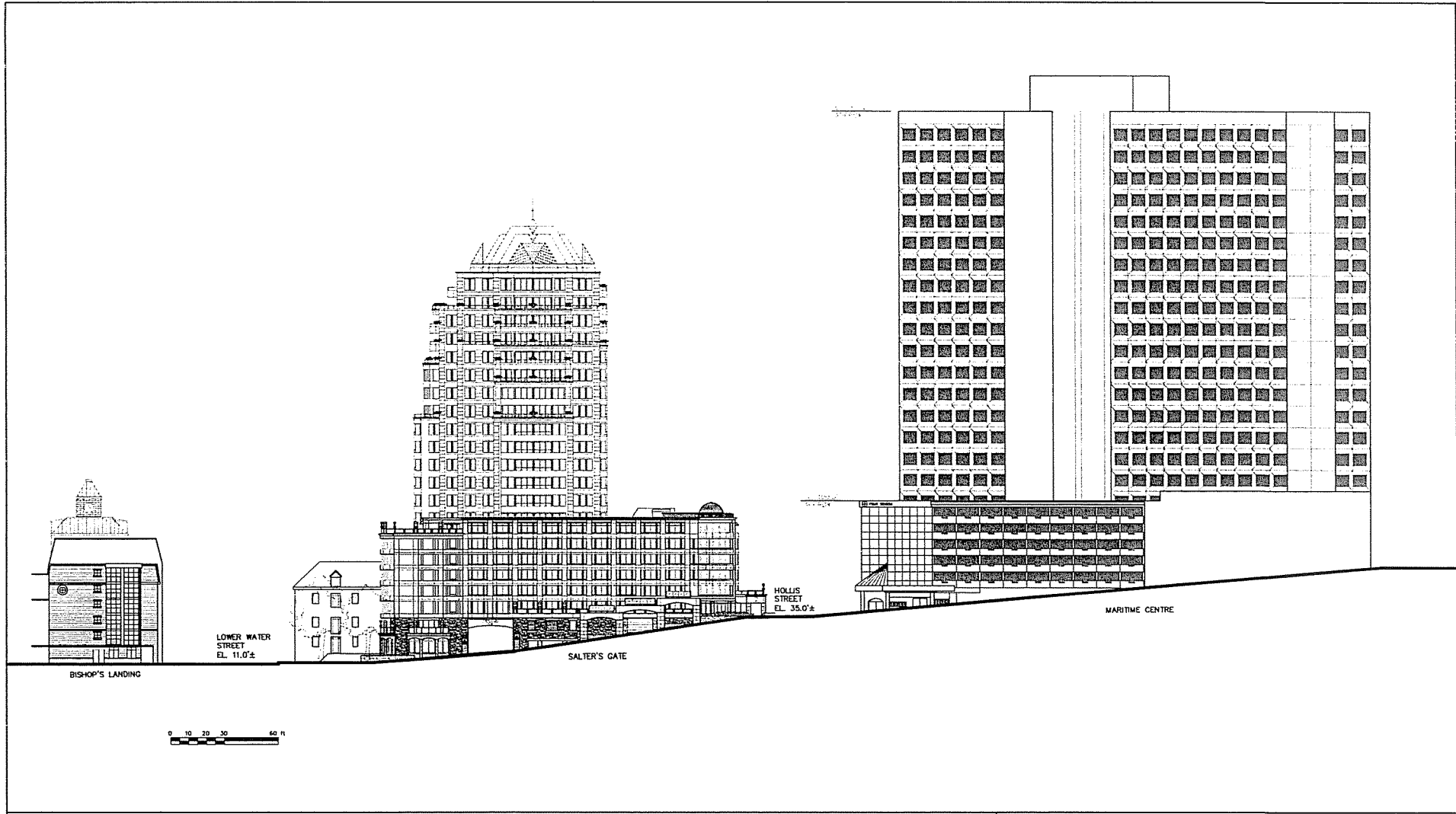
ISSUED FOR
H.R.M. APPLICATION

JOB NO.
0628

DATE
MAY 12, 2008



THE BREWERY MARKET - PHASE II HALKIRK PROPERTIES LIMITED <i>Duffus Romans Kundzins Rounsefell</i>		HOLLIS STREET ELEVATION	
ISSUED FOR H.R.M. APPLICATION		JOB NO. 0628	DATE MAY 12, 2008



THE BREWERY MARKET - PHASE II
HALKIRK PROPERTIES LIMITED
Duffus Romans Kundzins Rounsefell

SALTER STREET ELEVATION

ISSUED FOR
 H.R.M. APPLICATION

JOB NO.
 0628

DATE
 MAY 12, 2008