

Item No. 8.1

Presented by:



SPORTS | ENTERTAINMENT | ATLANTIC

SWATCH JUNIOR WORLD CHAMPIONSHIPS
HALIFAX, CANADA 2012

2012 World Beach Volleyball Host Society
Derek Martin
1549 Lower Water St.
3rd Floor
Halifax, NS B3J 1S2

February 1, 2012

Halifax Regional Council
PO Box 1749
Halifax, NS B3J 3A5

His Worship and Esteemed Members of Council:

As you may know the FIVB Beach Volleyball SWATCH Junior World Championships will be returning to Halifax for the 2012 tournament which will bring athletes and volleyball fans from over 35 countries around the world to Halifax and crown the world's best under-21 beach volleyball teams.

As part of the festivities around this exciting event, we are engaged in discussions with the Canadian Forces to have a CF-18 fly-by 500ft over the event venue at Salter Block to open the event on Championship Sunday, September 2nd. Competition begins at 12:00pm and we are requesting the fly-by take place at 11:45am. Enclosed is a map illustrating the requested flight path.

As part of the request package to be submitted to the Canadian Forces we require a letter from His Worship and Council acknowledging support for the fly-by, specifically stating that permission is granted for the fly-by to take place at 500ft. Please accept this letter as our official request for such a document.

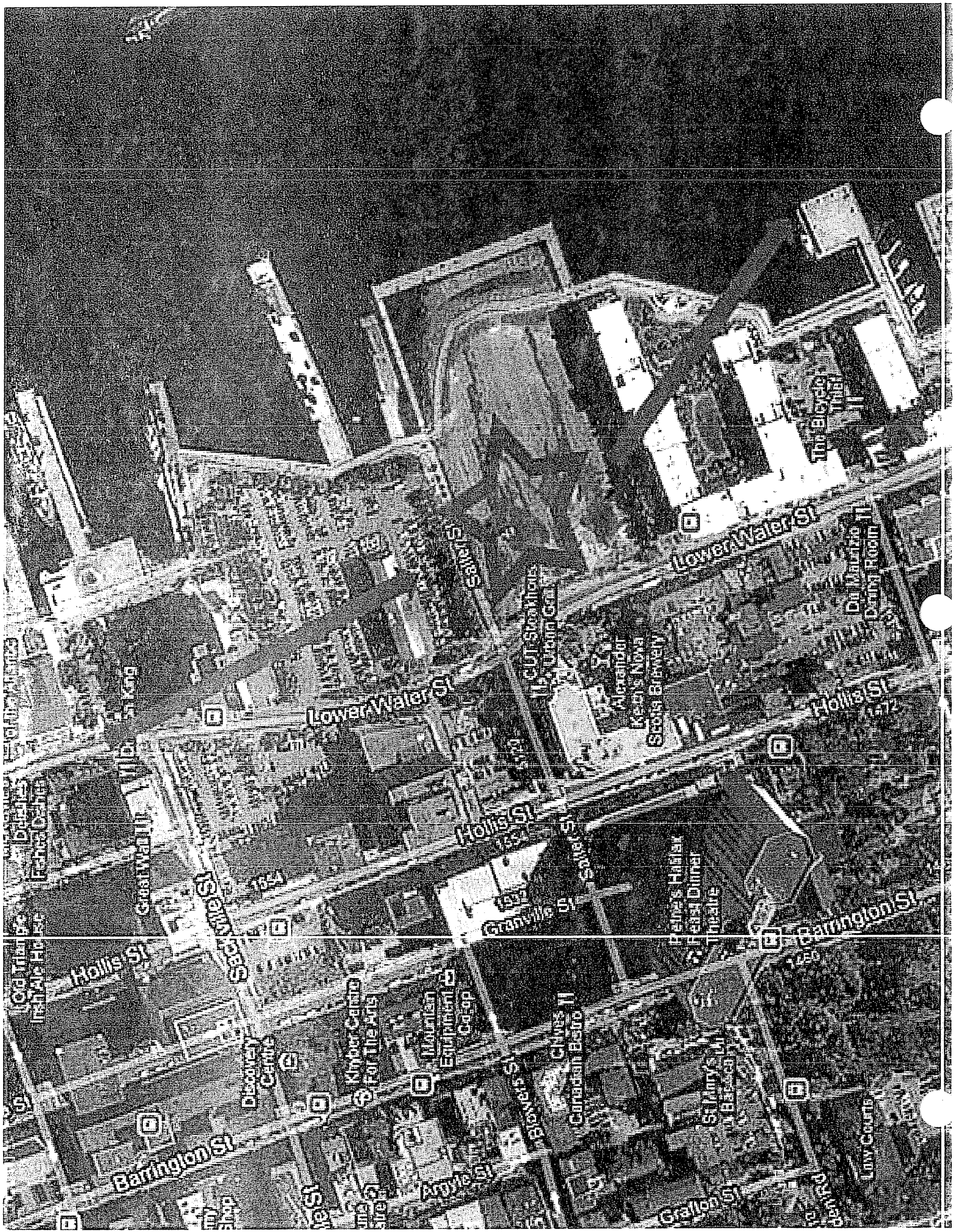
Your support for our event is greatly appreciated and we look forward to seeing you at the beach!

Sincerely,

Derek Martin
President

Enclosure





Old Trial Pt
Fish Air Ho
Great Wall St
Hollis St
Barrington St
1654
Discovery Centre
Kemper Centre
for the Arts
Mountain
Equipment
Co-op
St. Anne's
Caribbean
Bistro
St. Mary's
Bar
Livy Courts
1250

St. Anne's
Caribbean
Bistro
St. Mary's
Bar
Livy Courts
1250

Discovery Centre
Kemper Centre
for the Arts
Mountain
Equipment
Co-op
St. Anne's
Caribbean
Bistro
St. Mary's
Bar
Livy Courts
1250

Discovery Centre
Kemper Centre
for the Arts
Mountain
Equipment
Co-op
St. Anne's
Caribbean
Bistro
St. Mary's
Bar
Livy Courts
1250

Discovery Centre
Kemper Centre
for the Arts
Mountain
Equipment
Co-op
St. Anne's
Caribbean
Bistro
St. Mary's
Bar
Livy Courts
1250

Discovery Centre
Kemper Centre
for the Arts
Mountain
Equipment
Co-op
St. Anne's
Caribbean
Bistro
St. Mary's
Bar
Livy Courts
1250

Discovery Centre
Kemper Centre
for the Arts
Mountain
Equipment
Co-op
St. Anne's
Caribbean
Bistro
St. Mary's
Bar
Livy Courts
1250

Discovery Centre
Kemper Centre
for the Arts
Mountain
Equipment
Co-op
St. Anne's
Caribbean
Bistro
St. Mary's
Bar
Livy Courts
1250

Discovery Centre
Kemper Centre
for the Arts
Mountain
Equipment
Co-op
St. Anne's
Caribbean
Bistro
St. Mary's
Bar
Livy Courts
1250

Discovery Centre
Kemper Centre
for the Arts
Mountain
Equipment
Co-op
St. Anne's
Caribbean
Bistro
St. Mary's
Bar
Livy Courts
1250

Discovery Centre
Kemper Centre
for the Arts
Mountain
Equipment
Co-op
St. Anne's
Caribbean
Bistro
St. Mary's
Bar
Livy Courts
1250

Discovery Centre
Kemper Centre
for the Arts
Mountain
Equipment
Co-op
St. Anne's
Caribbean
Bistro
St. Mary's
Bar
Livy Courts
1250

Discovery Centre
Kemper Centre
for the Arts
Mountain
Equipment
Co-op
St. Anne's
Caribbean
Bistro
St. Mary's
Bar
Livy Courts
1250

Discovery Centre
Kemper Centre
for the Arts
Mountain
Equipment
Co-op
St. Anne's
Caribbean
Bistro
St. Mary's
Bar
Livy Courts
1250

Discovery Centre
Kemper Centre
for the Arts
Mountain
Equipment
Co-op
St. Anne's
Caribbean
Bistro
St. Mary's
Bar
Livy Courts
1250

Discovery Centre
Kemper Centre
for the Arts
Mountain
Equipment
Co-op
St. Anne's
Caribbean
Bistro
St. Mary's
Bar
Livy Courts
1250

Discovery Centre
Kemper Centre
for the Arts
Mountain
Equipment
Co-op
St. Anne's
Caribbean
Bistro
St. Mary's
Bar
Livy Courts
1250