

Settlement and Transportation

DRAFT

DRAFT

DRAFT

LEGEND

Centres

- Regional Centre (Urban Core)
- Agricultural District Centre
- Agricultural Local Centre
- Rural Commuter Centre
- Rural Commuter District Centre
- Rural Commuter Local Centre
- Rural Resource District Centre
- Rural Resource Local Centre
- Suburban District Centre
- Suburban Local Centre
- Urban District Centre
- Urban Local Centre

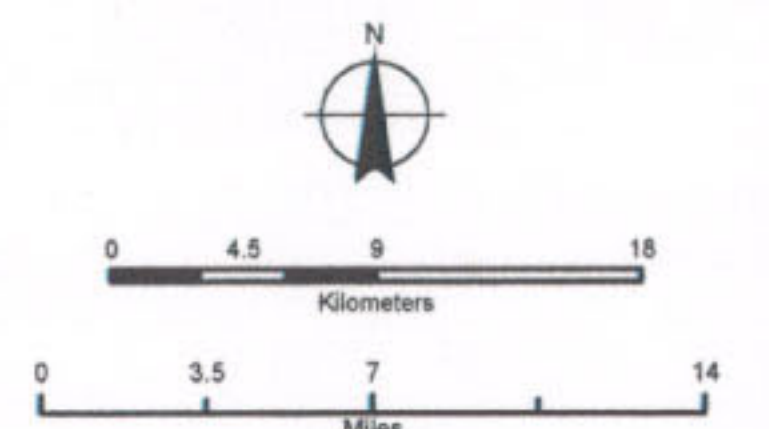
Transit

- Bus Rapid Transit
- Express Bus
- Rural Bus
- Transit Hubs

Other Transportation

- Railways
- Major Roads
- Existing Ferries
- Future Transportation Links
- Transportation Corridors Reserve
- Future Transportation Projects (Listed in Policy)
- Open Space & Natural Resources System

Map 1



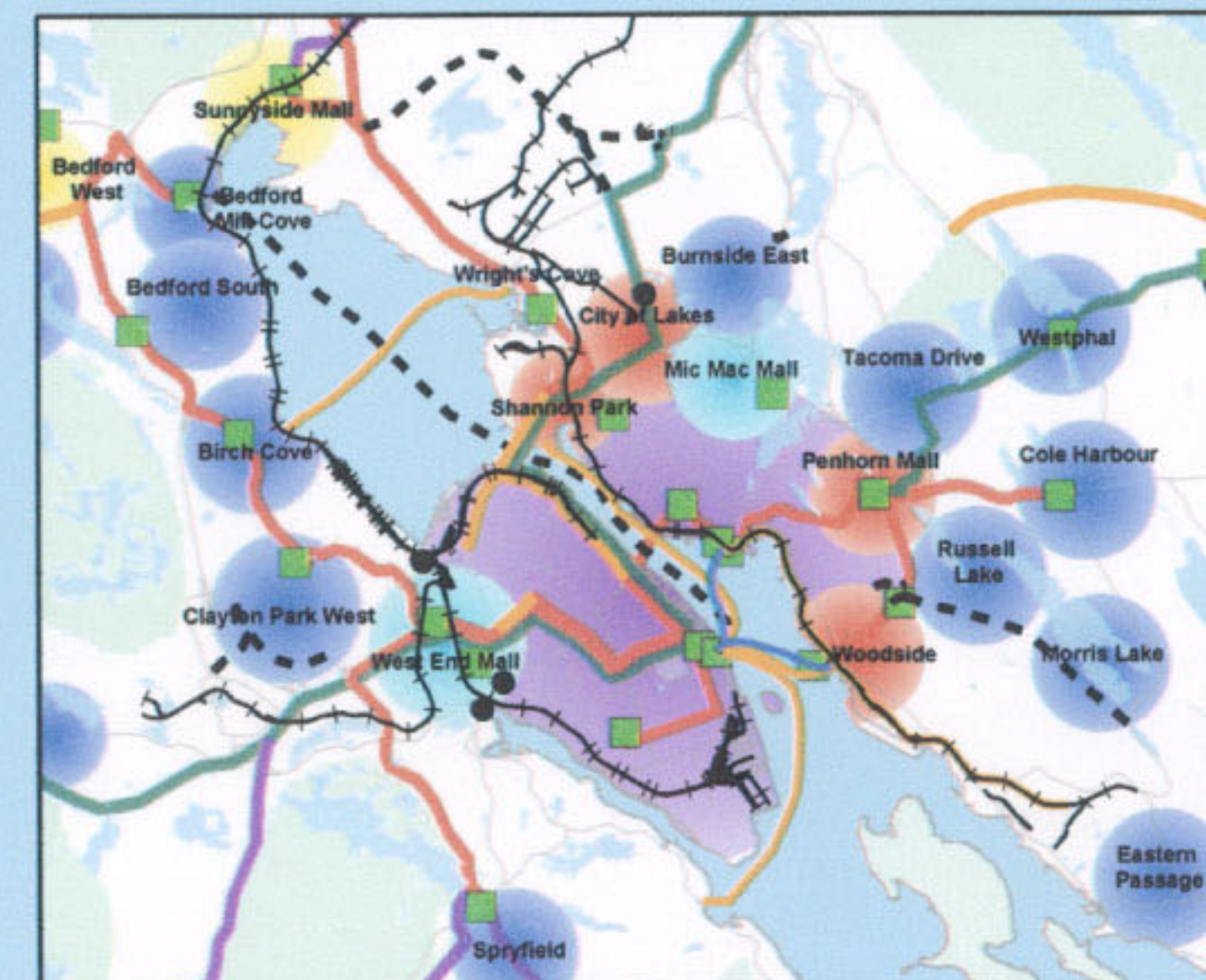
HALIFAX
REGIONAL MUNICIPALITY

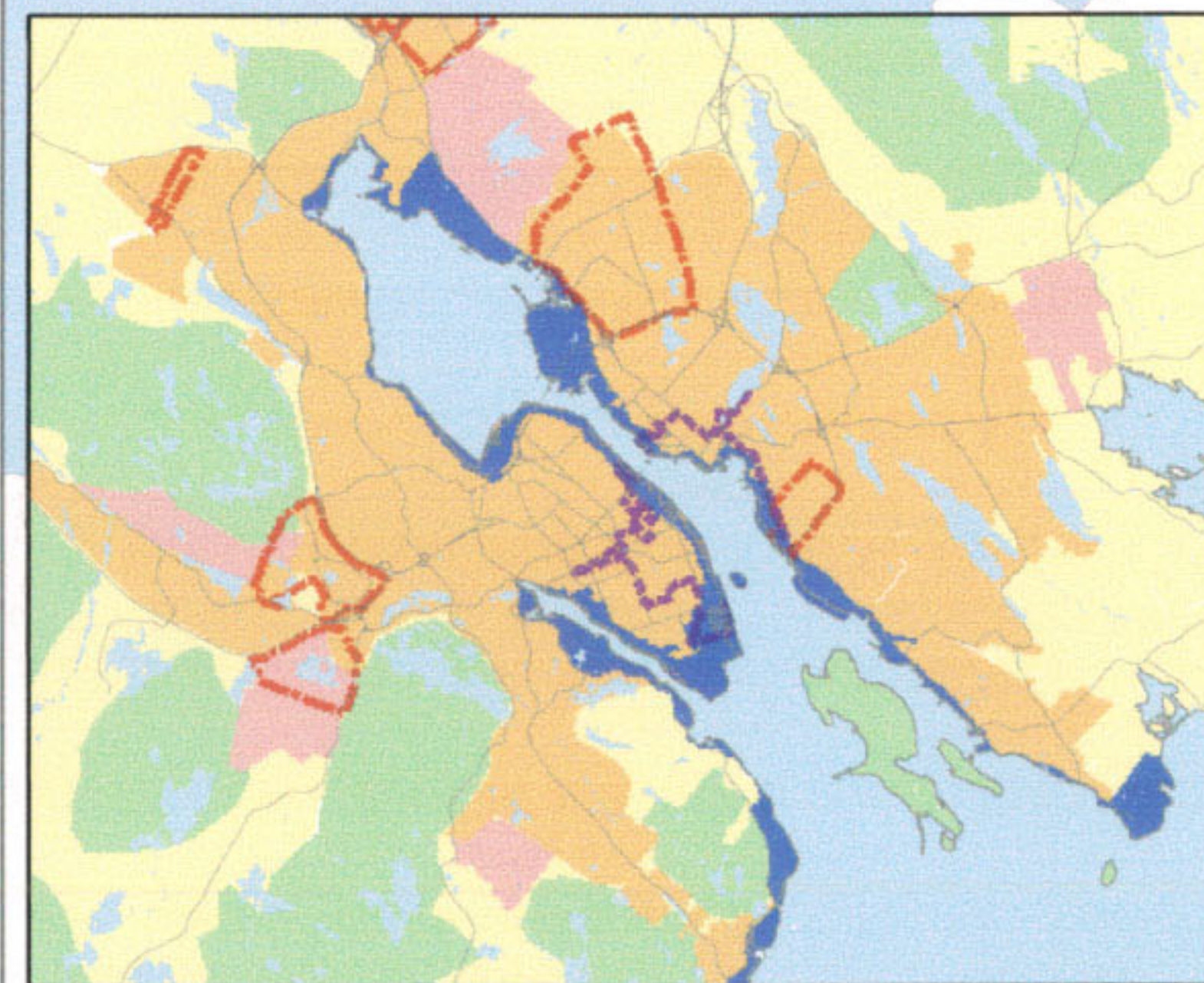
The following is a graphical representation and although care has been taken to ensure the best possible quality, HRM does not guarantee the accuracy of this document.

Notes: This map demonstrates a vision to be implemented over the life of the Regional Plan, through various tools, subject to financial ability and community interest.

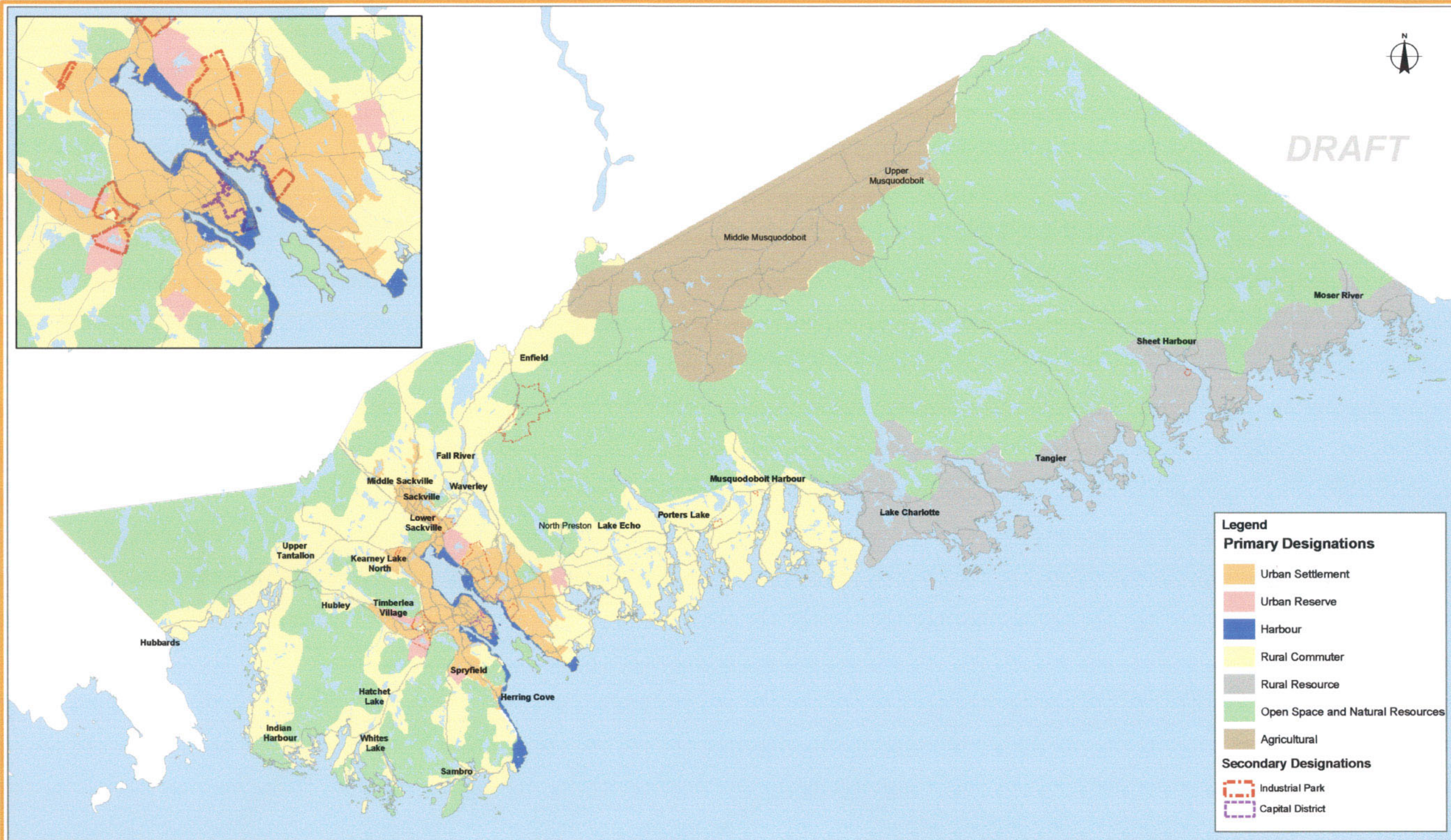
Large scale versions of this document may be viewed on the Regional Planning website, www.halifax.ca/regionalplanning/

* Timberlea Village, Lakeside / Beechville Centres are under review.





DRAFT



Legend

Primary Designations

- Urban Settlement
- Urban Reserve
- Harbour
- Rural Commuter
- Rural Resource
- Open Space and Natural Resources
- Agricultural

Secondary Designations

- Industrial Park
- Capital District



The following is a graphical representation and although care has been taken to ensure the best possible quality, HRM does not guarantee the accuracy of this document.

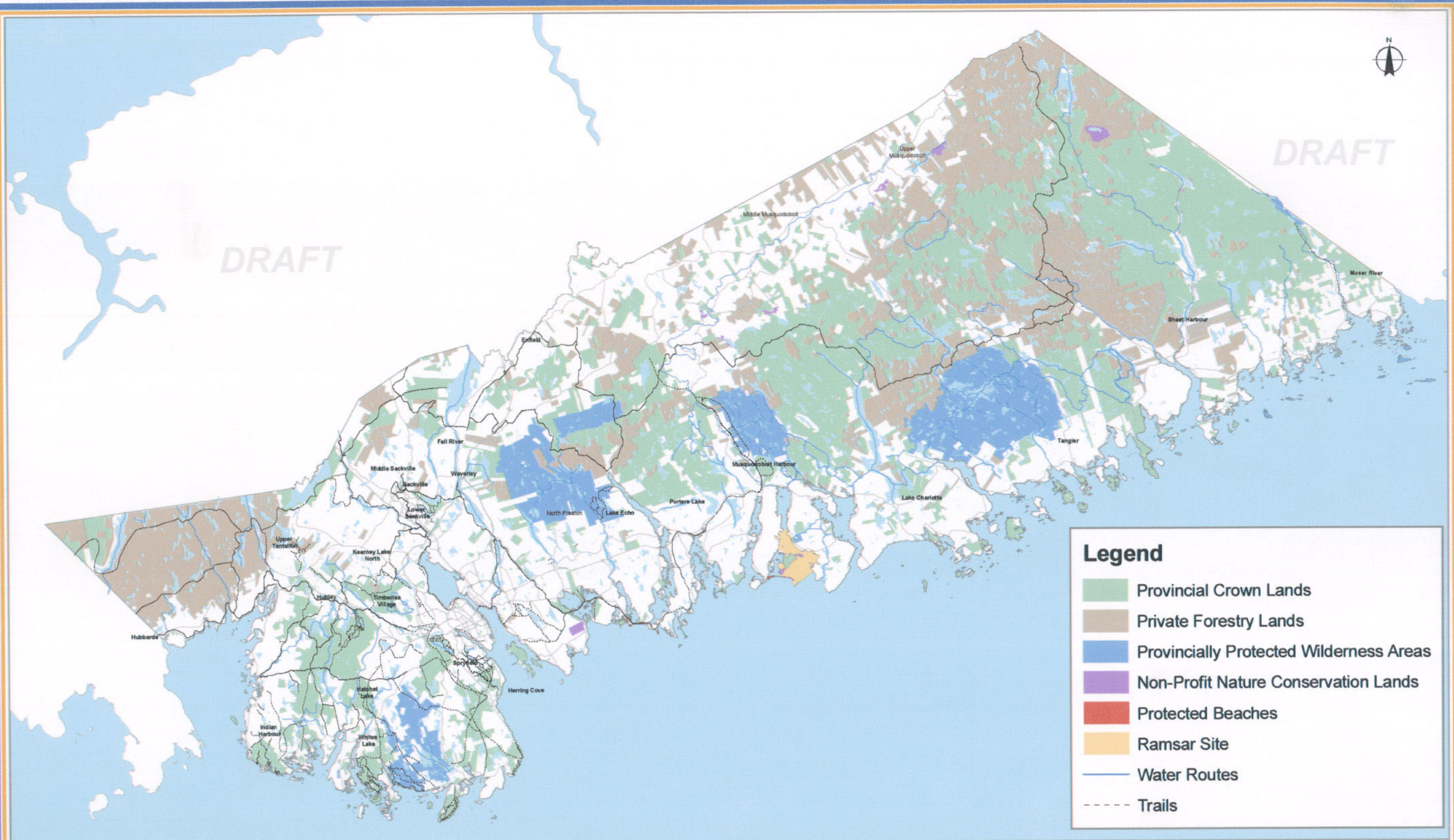
Generalized Future Land Use Map

Map 2

Notes: This map demonstrates a vision to be implemented over the life of the Regional Plan, through various tools, subject to financial ability and community interest. Large scale versions of this document may be viewed on the Regional Planning website, www.halifax.ca/regionalplanning/

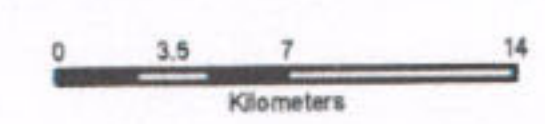
Date: April 18, 2005

HRM - Regional Planning



Legend

- Provincial Crown Lands
- Private Forestry Lands
- Provincially Protected Wilderness Areas
- Non-Profit Nature Conservation Lands
- Protected Beaches
- Ramsar Site
- Water Routes
- Trails



The following is a graphical representation and although care has been taken to ensure the best possible quality, HRM does not guarantee the accuracy of this document.

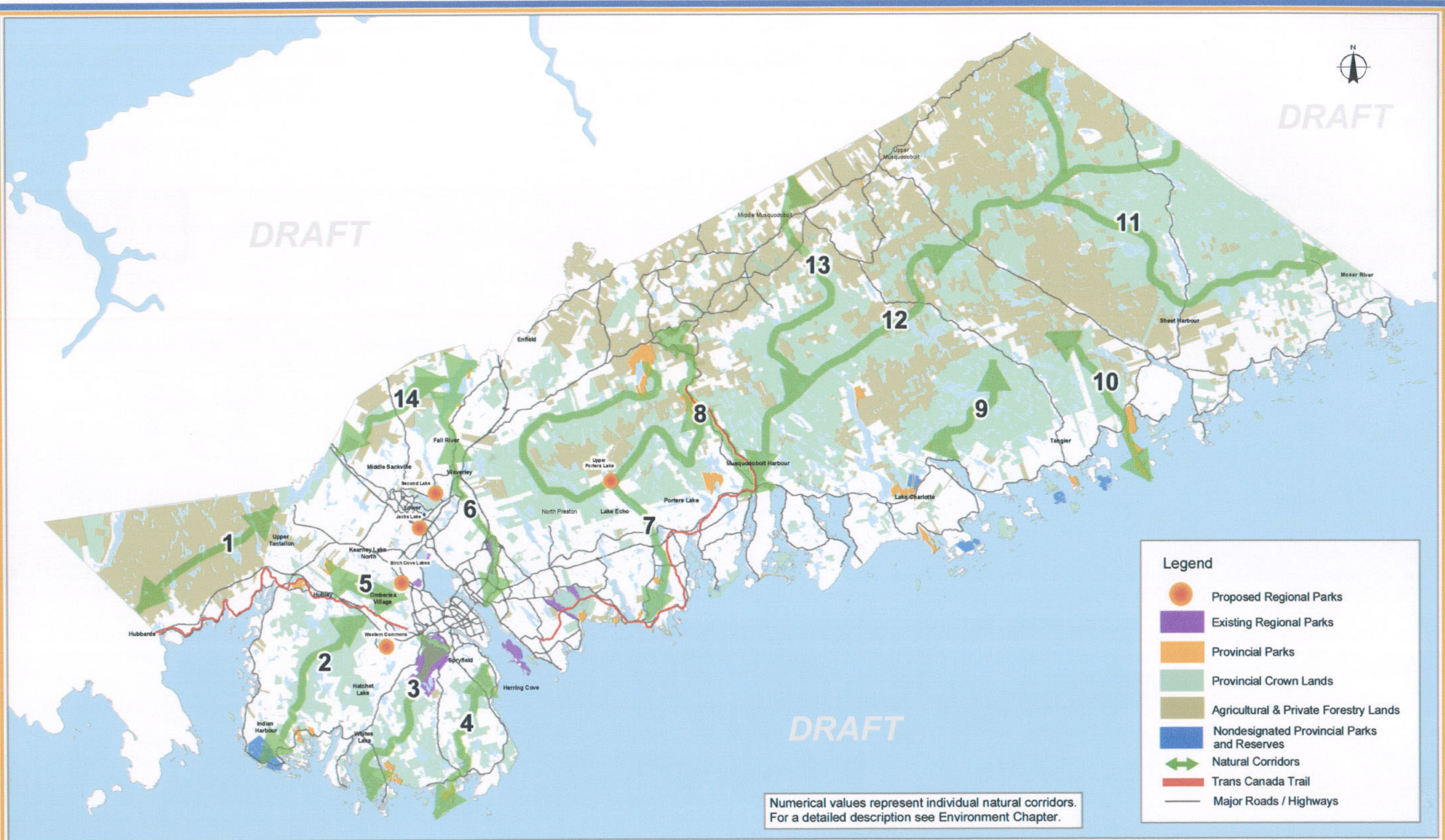
Trails and Natural Networks

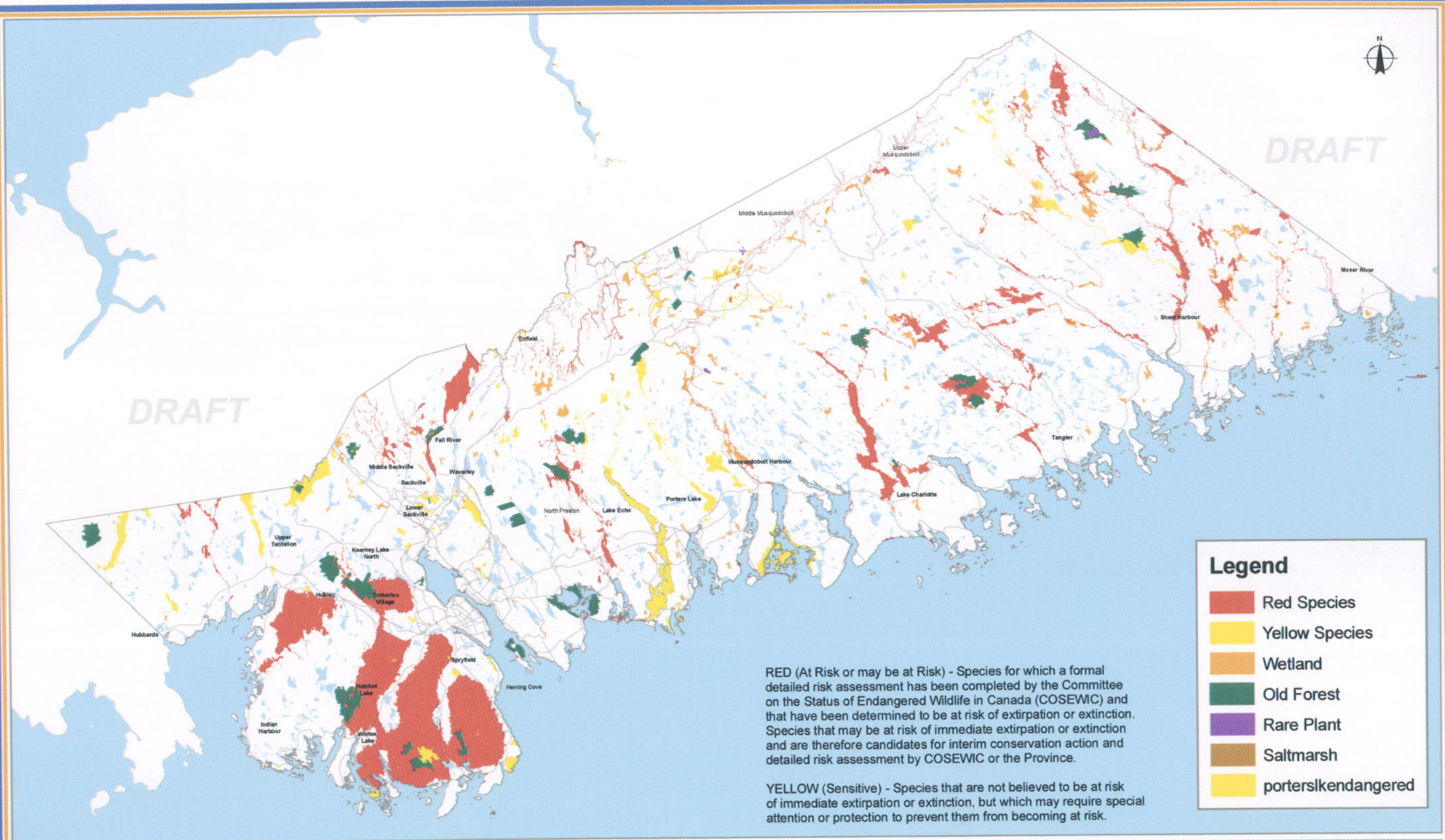
Map 3

Notes: Large scale versions of this document may be viewed on the Regional Planning website. <http://www.halifax.ca/regionalplanning/>

Date: April 18th, 2005

HRM - Regional Planning





Legend

- Red Species
- Yellow Species
- Wetland
- Old Forest
- Rare Plant
- Saltmarsh
- porterslkendangered

RED (At Risk or may be at Risk) - Species for which a formal detailed risk assessment has been completed by the Committee on the Status of Endangered Wildlife in Canada (COSEWIC) and that have been determined to be at risk of extirpation or extinction. Species that may be at risk of immediate extirpation or extinction and are therefore candidates for interim conservation action and detailed risk assessment by COSEWIC or the Province.

YELLOW (Sensitive) - Species that are not believed to be at risk of immediate extirpation or extinction, but which may require special attention or protection to prevent them from becoming at risk.



0 3.5 7 14
Kilometers

The following is a graphical representation and although care has been taken to ensure the best possible quality, HRM does not guarantee the accuracy of this document.

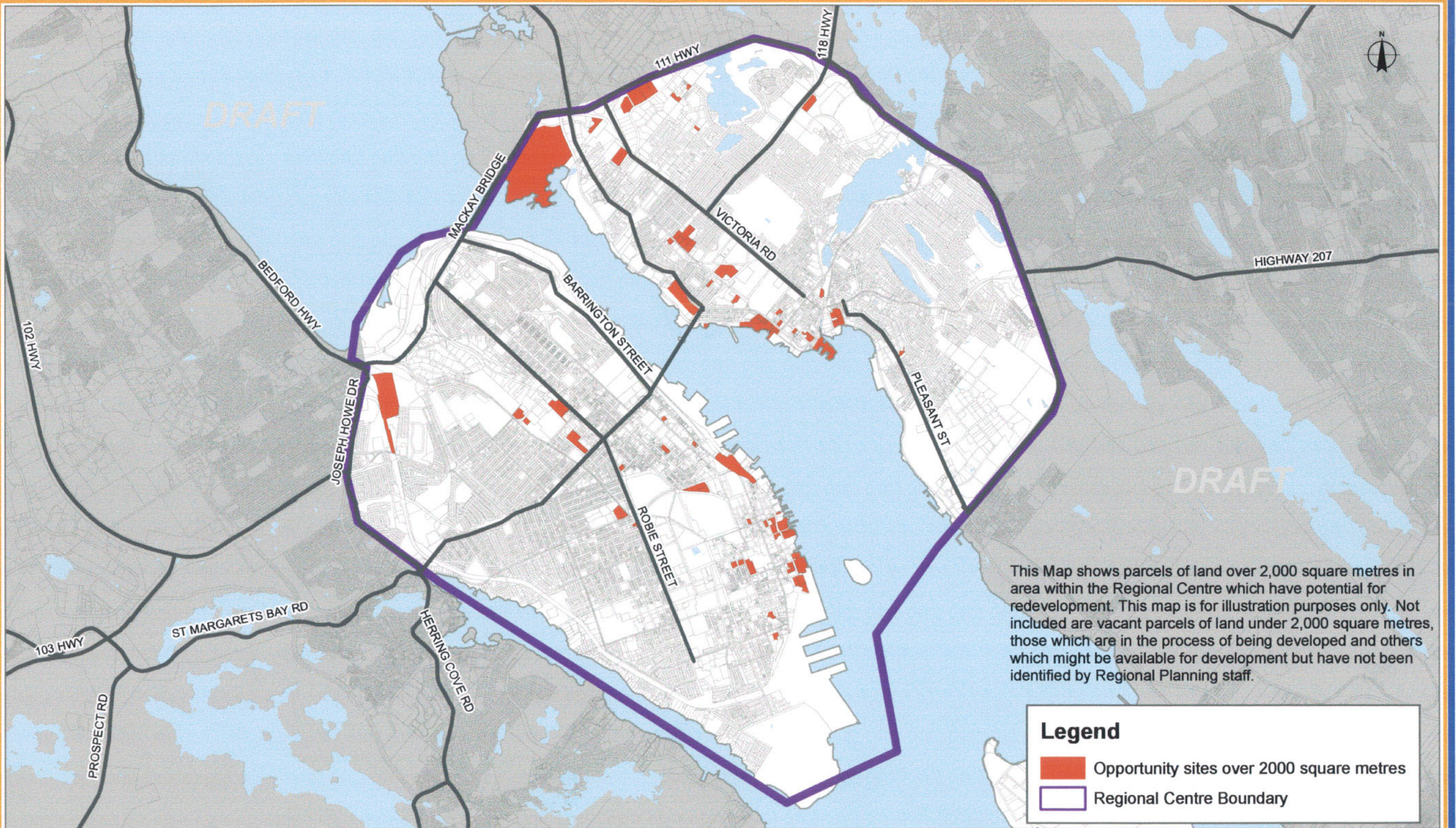
Significant Habitats and Endangered Species

Map 5

Notes: Large scale versions of this document may be viewed on the Regional Planning website, www.halifax.ca/regionalplanning/

Date: April 18th, 2005

HRM - Regional Planning



This Map shows parcels of land over 2,000 square metres in area within the Regional Centre which have potential for redevelopment. This map is for illustration purposes only. Not included are vacant parcels of land under 2,000 square metres, those which are in the process of being developed and others which might be available for development but have not been identified by Regional Planning staff.

Legend

- Opportunity sites over 2000 square metres
- Regional Centre Boundary

Future Transit & Transportation

DRAFT

LEGEND

Future Transportation Routes

- Within 25 Years
- Beyond 25 years (Reserve Corridors)

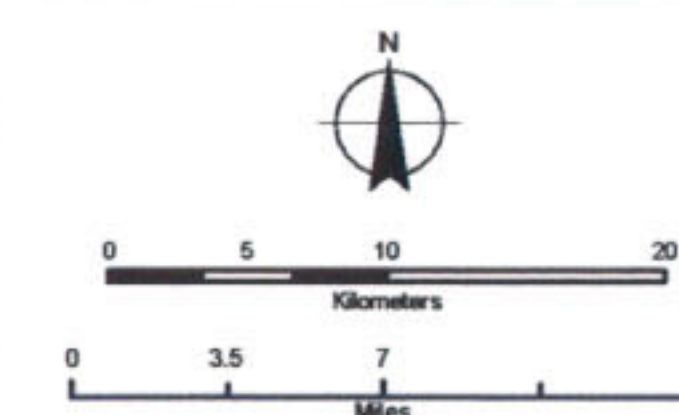
Transit

- Bus Rapid Transit
- Express Bus
- Rural Bus
- Transit Hubs

Other Transportation

- + + + Railways
- Major Roads
- Existing Ferries
- - - Future Ferry Links
- Future Transportation Projects (Listed in Policy)

Map 7

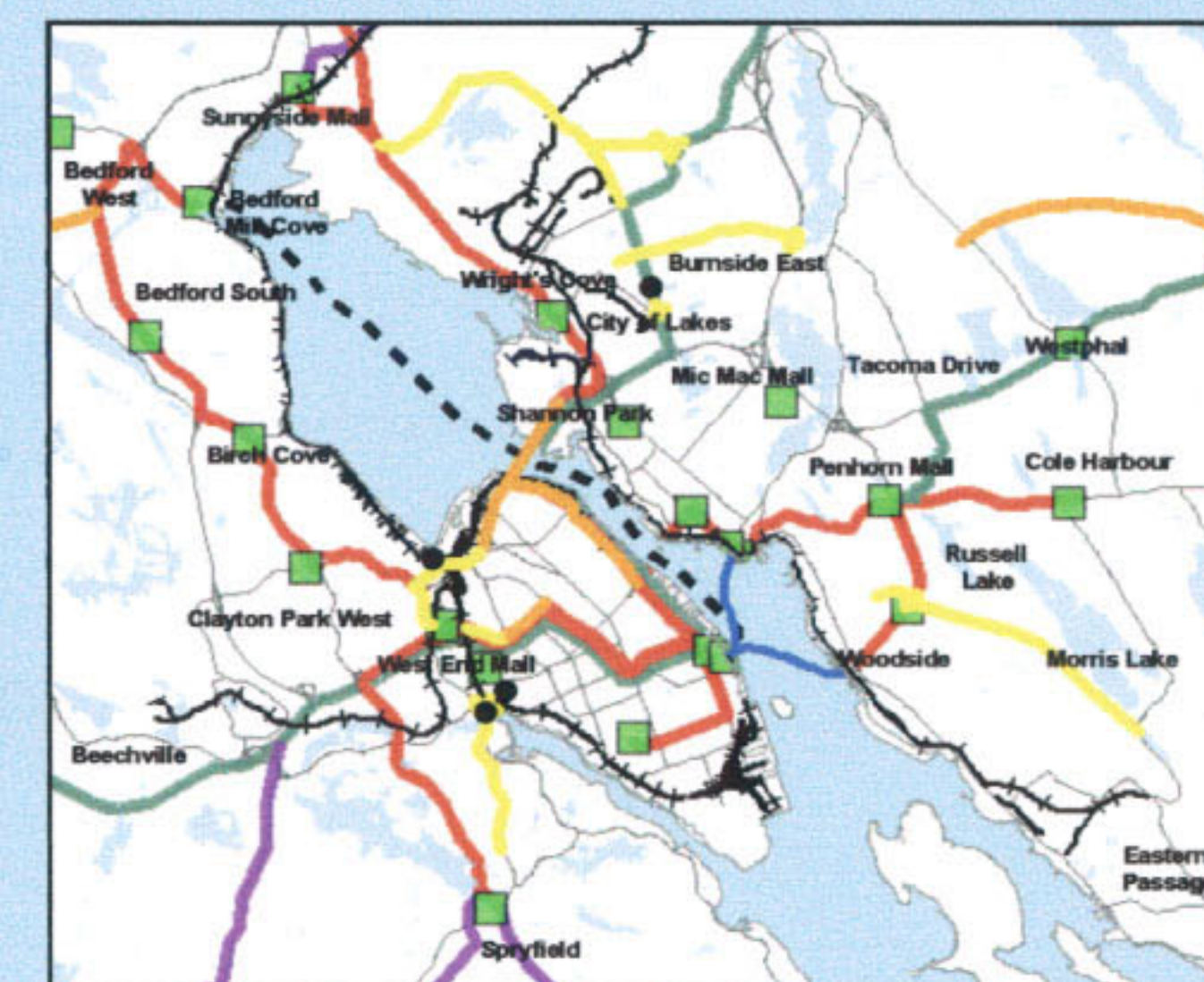


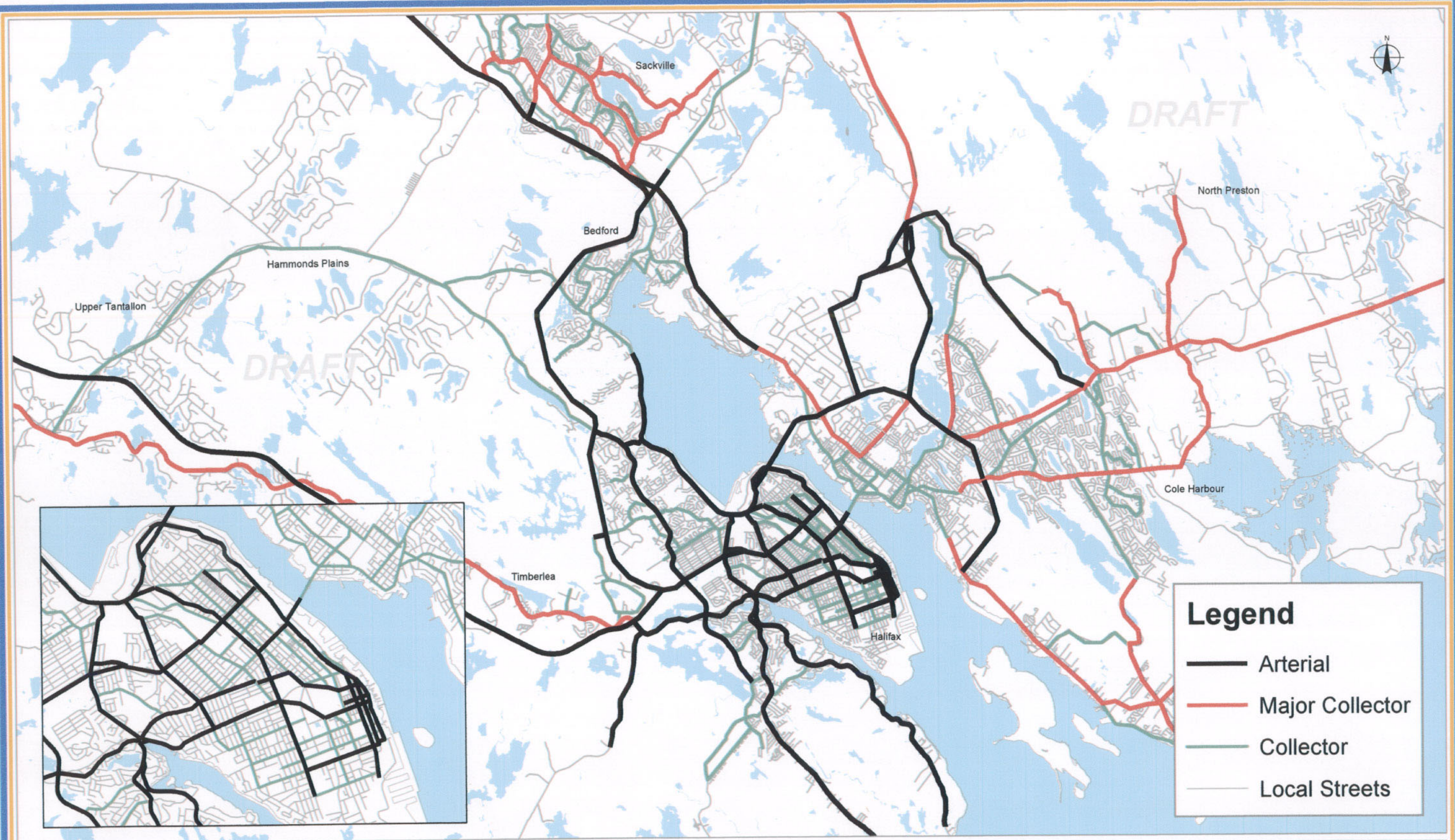
HALIFAX
REGIONAL MUNICIPALITY

The following is a graphical representation and although care has been taken to ensure the best possible quality, HRM does not guarantee the accuracy of this document.

Notes: This map demonstrates a vision to be implemented over the life of the Regional Plan, through various tools, subject to financial ability and community interest.



Large scale versions of this document may be viewed on the Regional Planning website, www.halifax.ca/regionalplanning/



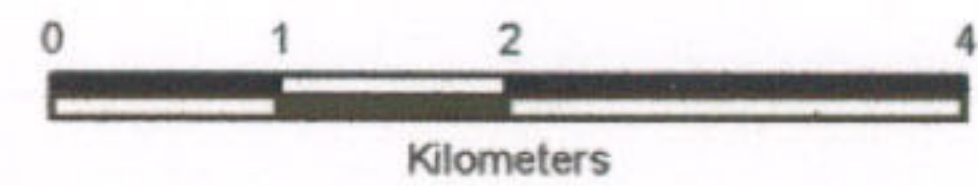
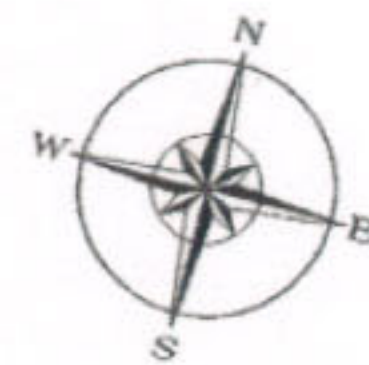


Halifax Harbour Secondary Plan

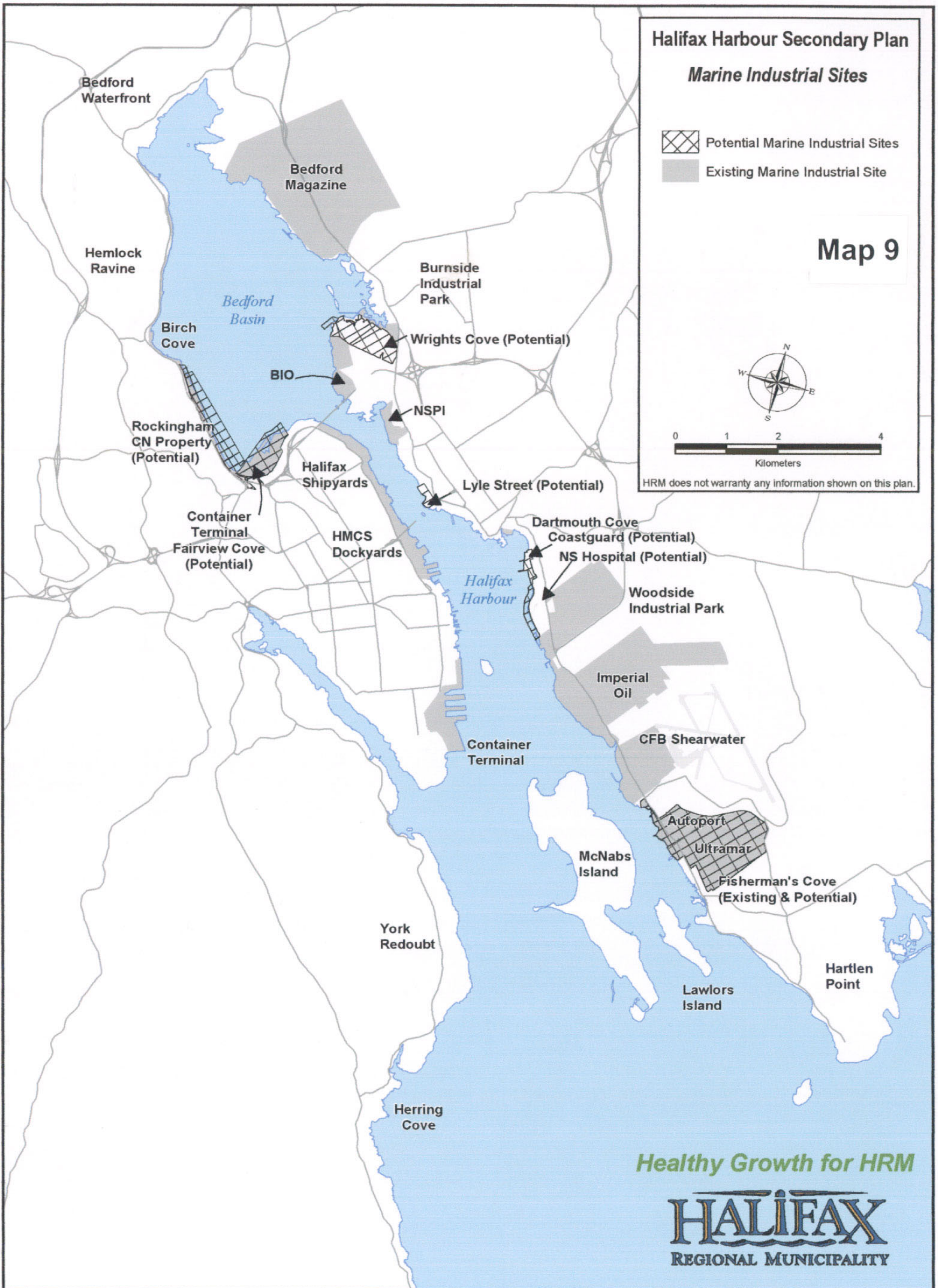
Marine Industrial Sites

-  Potential Marine Industrial Sites
-  Existing Marine Industrial Site

Map 9



HRM does not warranty any information shown on this plan.







Healthy Growth for HRM

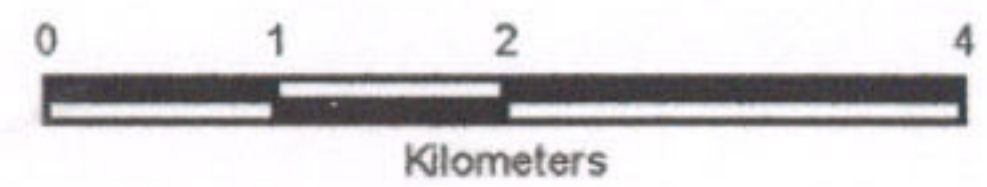
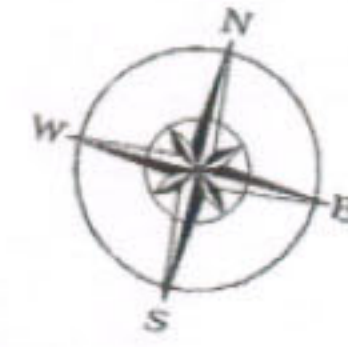
HALIFAX
REGIONAL MUNICIPALITY

Halifax Harbour Secondary Plan

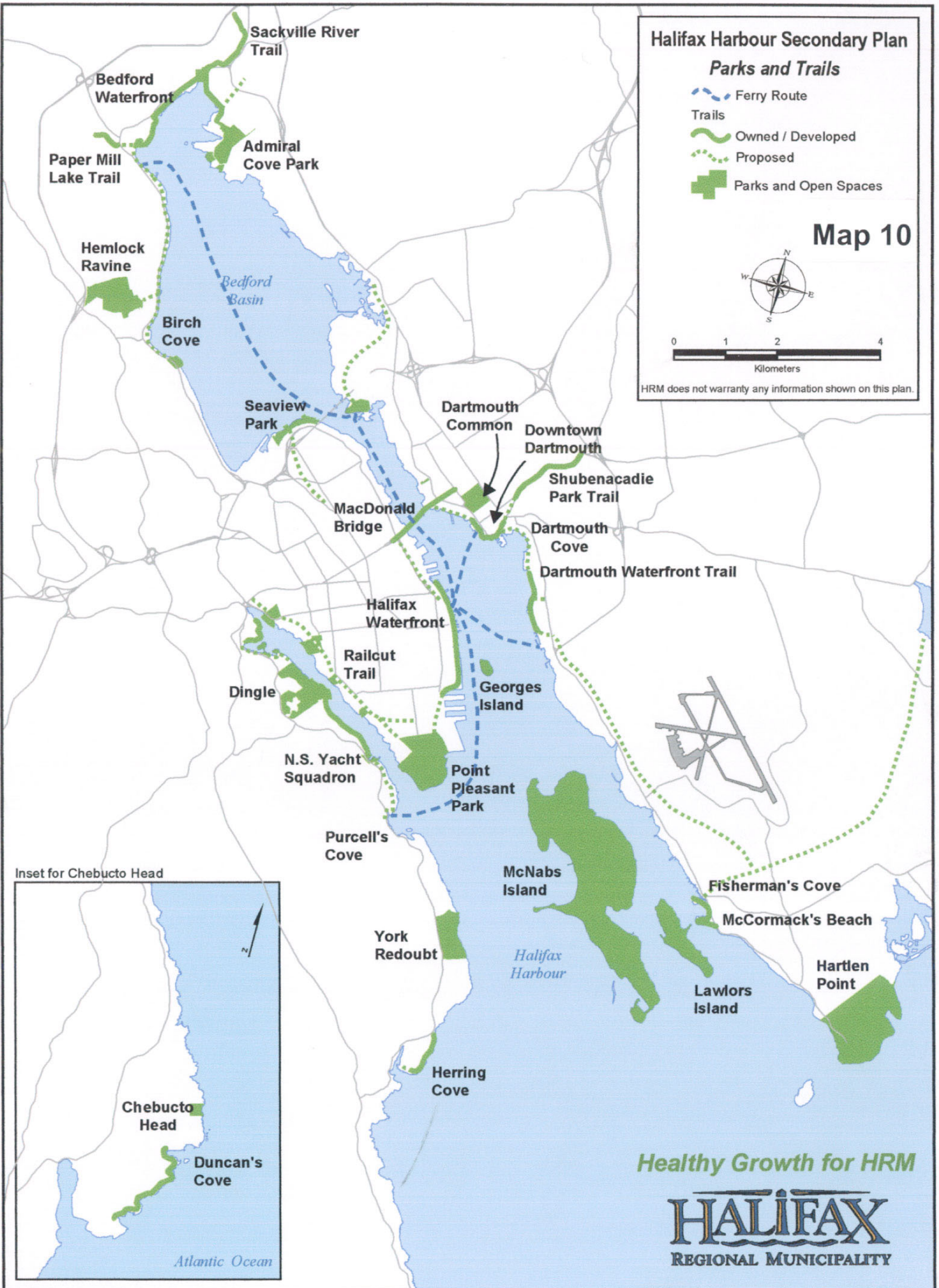
Parks and Trails

-  Ferry Route
- Trails**
 -  Owned / Developed
 -  Proposed
-  Parks and Open Spaces

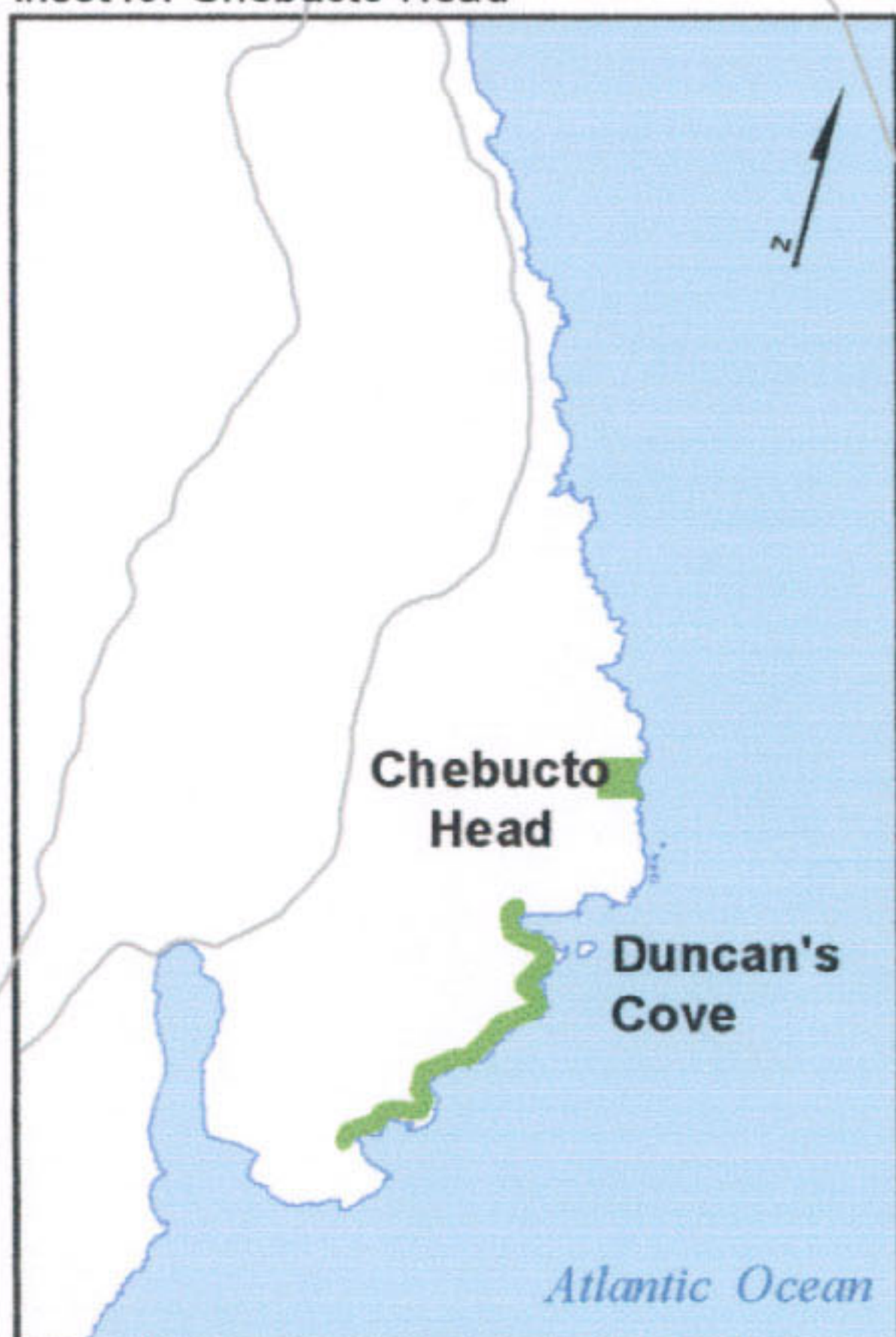
Map 10



HRM does not warranty any information shown on this plan.



Inset for Chebucto Head



Healthy Growth for HRM

HALIFAX
REGIONAL MUNICIPALITY

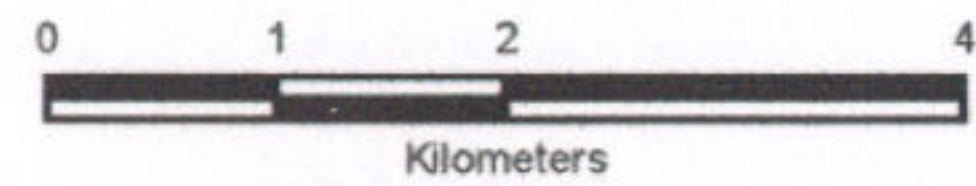
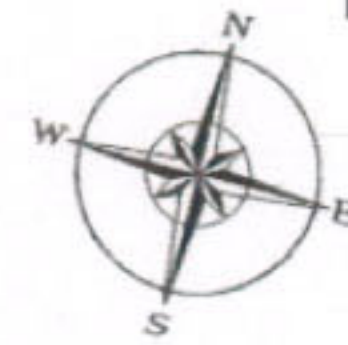
Halifax Harbour Secondary Plan

Potential Residential Sites

 Potential Residential Sites

 Existing Residential Sites

Map 11



HRM does not warranty any information shown on this plan.

Bedford
Waterfront
Phase II

Bedford
Highway
Properties

Bedford
Basin

Shannon Park

Downtown
Waterfront

Dartmouth Cove/
Marine Slips

Halifax
Waterfront

Purcell's
Cove

McNabs
Island

Fisherman's Cove

Lawlors
Island

Herring
Cove

Chebucto
Head

Duncan's
Cove

Atlantic Ocean

Healthy Growth for HRM

HALIFAX
REGIONAL MUNICIPALITY

Cultural Landscape

DRAFT

DRAFT

DRAFT

LEGEND

Cultural Significance

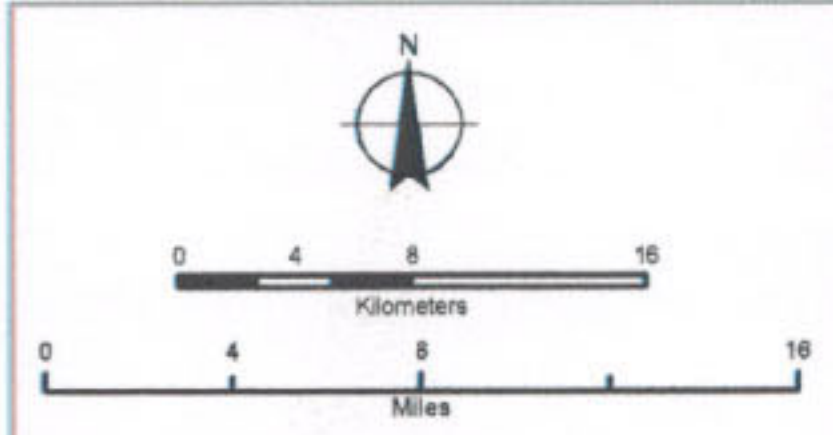
- 0 Category Descriptions:
Zero represents low cultural significance and five indicates high relative cultural significance.
- 1 The values assigned to the categories on this map were created by adding the model criteria together.
- 2
- 3 The result is this map. One final step was performed. The result was recategorized into values from 0 to 5. The original result had 46 distinct values. To make the result more meaningful, it was necessary to reduce the categories to 6 for map purposes.
- 4
- 5

- Major Transportation Routes
- Active Rail Lines

CULTURAL LANDSCAPES MODEL CRITERIA:

- Proximity to heritage properties
- Parcel fabric coded by heritage categories (Year of registration)
- Proximity to historic sites
- Parks and open space
- Proximity to water transportation routes
- Old fields/old growth from the forest inventory
- First Nations Reserves
- Government owned land
- Proximity to churches and cemeteries
- Proximity to abandoned and existing rail lines
- Proximity to abandoned roads and trails
- Proximity to abandoned mines
- Proximity to known archaeological resources
- Results of the Archaeological Potential Model
- Visibility of the ocean (to 24km)
- Islands with government ownership
- Proximity to lighthouses
- Proximity to schools

Map 12



The following is a graphical representation and although care has been taken to ensure the best possible quality, HRM does not guarantee the accuracy of this document.

Notes: This map demonstrates a vision to be implemented over the life of the Regional Plan, through various tools, subject to financial ability and community interest.

Large scale versions of this document may be viewed on the Regional Planning website, www.halifax.ca/regionalplanning7

