

Halifax Harbour Water Quality Monitoring Project Weekly Summary #23

Survey Date: 24 Nov 04
Nature of Survey: Complete Survey
Report File (this document): HHWQMP_report023_041124.doc
Data File: HHWQMP_data023_041124.xls

Data Return:
 Profile: 100%
 Bacteria: 100%
 Chemical: 100%
Overall: 100%

Sample Notes:
 SYC profile data is missing. Additional CTD site B1 sampled.

QA/QC samples:

Chemical Analysis		EE2 - 1m		H2- 10m	
Detectable Parameter	units	reference sample	QA/QC	reference sample	Dup
Ammonia (as N)	mg/L	< 0.05	0.06	0.07	0.05
Total Suspended Solids	mg/L	2.2	9.1	9.5	n/a
Boron	ug/L	3700	3500	3700	3500
Lithium	ug/L	160	150	160	150
Strontium	ug/L	5700	5800	5900	5800
Titanium	ug/L	62	64	57	59
Uranium	ug/L	3.2	3.0	4.5	3.1

Fecal Coliform (CFU/100ml)

Site	C6-1m	F3-1m	HC-10m	F3-10m	D1-10M	EE2-1M
Reference	140	970	20	57	450	830
QA/QC	60	390	15	31	180	340

Regulated parameters with all samples below detection (<EQL)

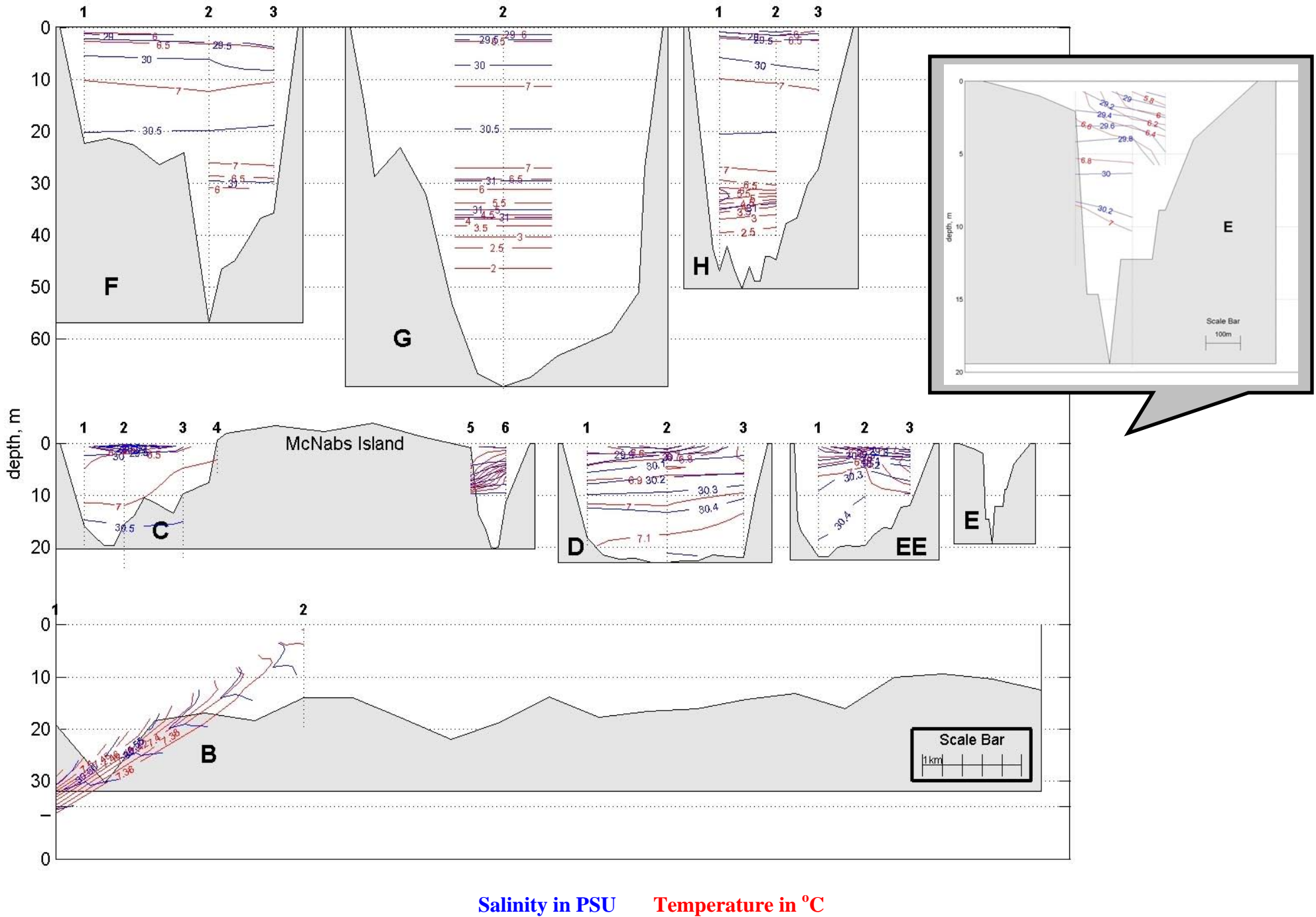
Parameter	EQL(µg/L)	Parameter	EQL(µg/L)	Parameter	EQL(mg/L)
Cadmium	3	Manganese	20	Oil and Grease	5
Chromium	20	Nickel	20	CBOD ₅	5
Copper	20	Zinc	50		
Lead	5				

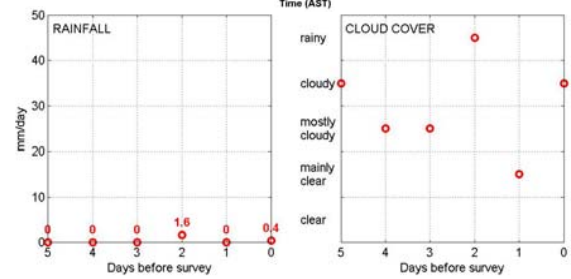
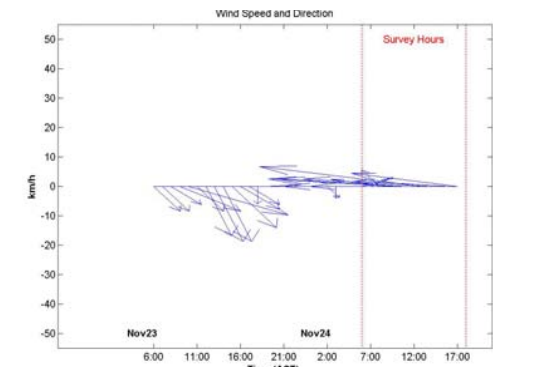
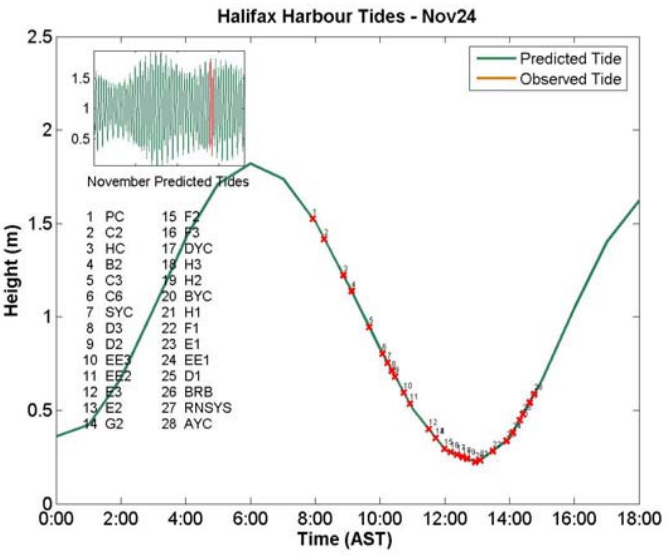
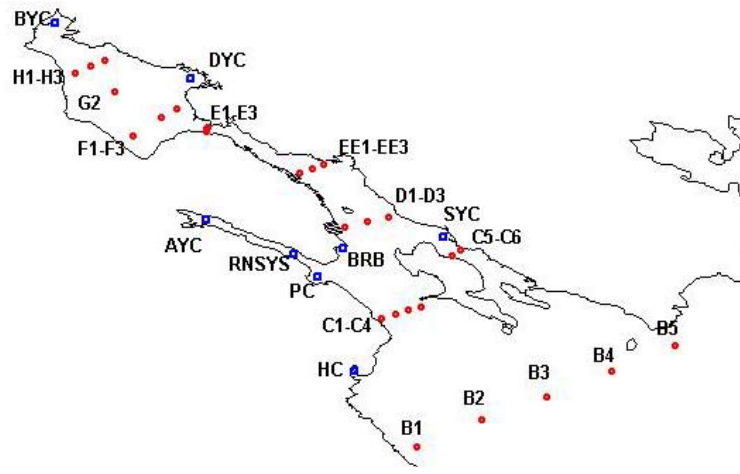
Detectable non regulated metals

Metal	EQL (µg/L)	Number >EQL	Mean (µg/L)	Range (µg/L)
Aluminum	100	1	110	110
Boron	500	16	3500	2300-3800
Lithium	20	16	150	110-170
Strontium	50	16	5700	4000-6100
Titanium	20	16	60	41-69
Uranium	1	16	3.2	2.7-3.6

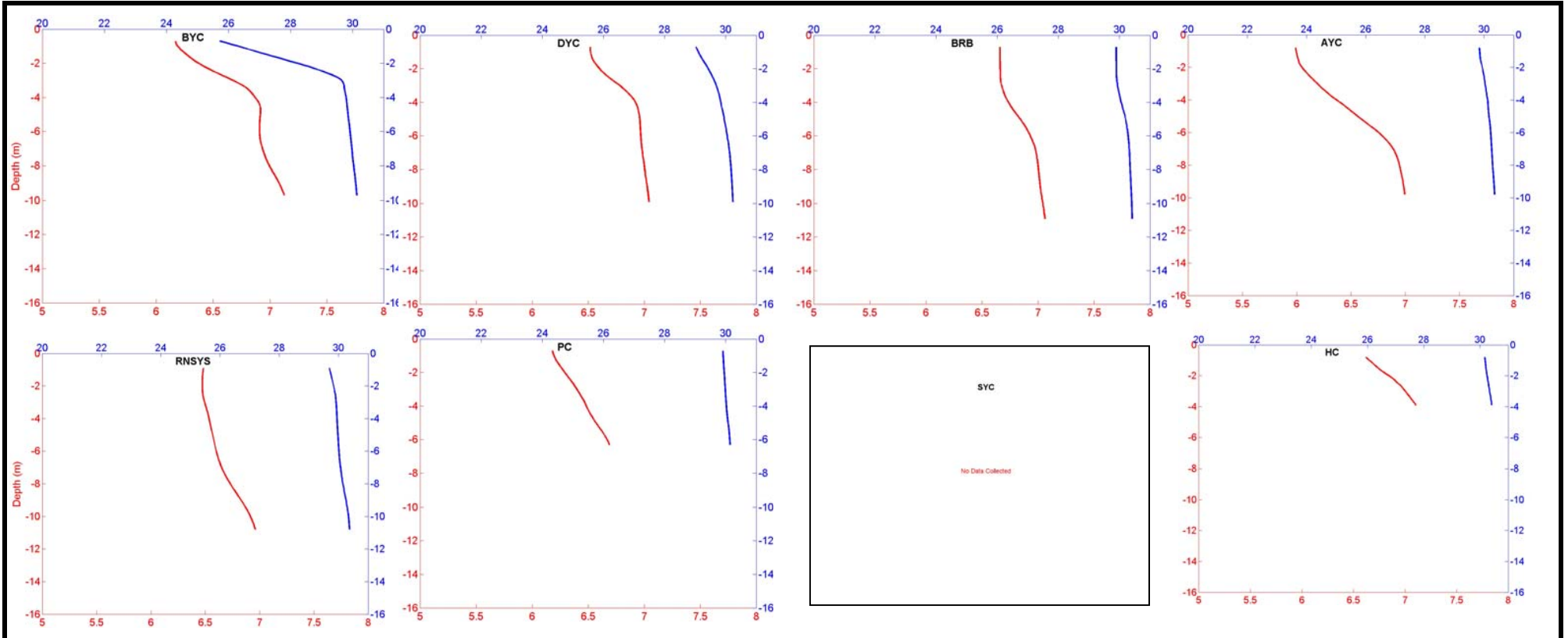
Comments:

Dissolved Oxygen: The dissolved oxygen continues to drop (1.7 mg/L) in the bottom waters of Bedford Basin. This bottom water represents the only criteria violation in the harbour.

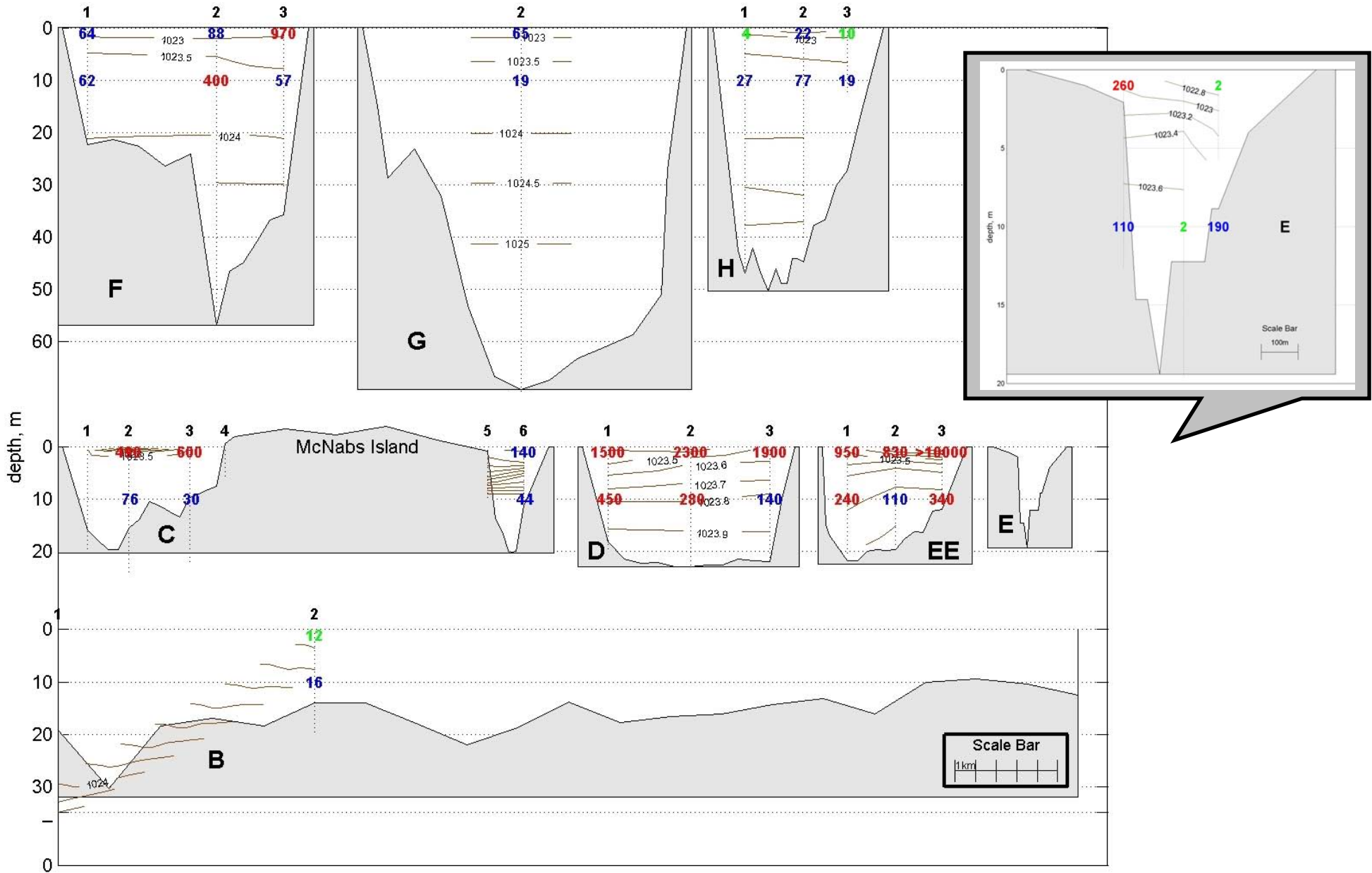




Yacht Clubs



Salinity in PSU Temperature in °C

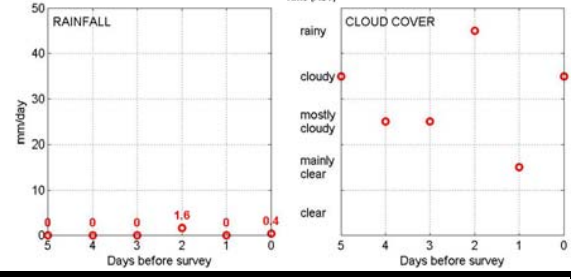
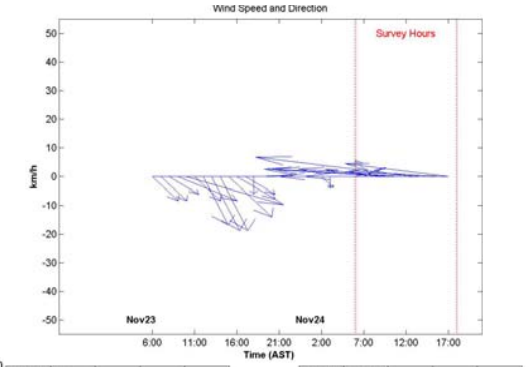
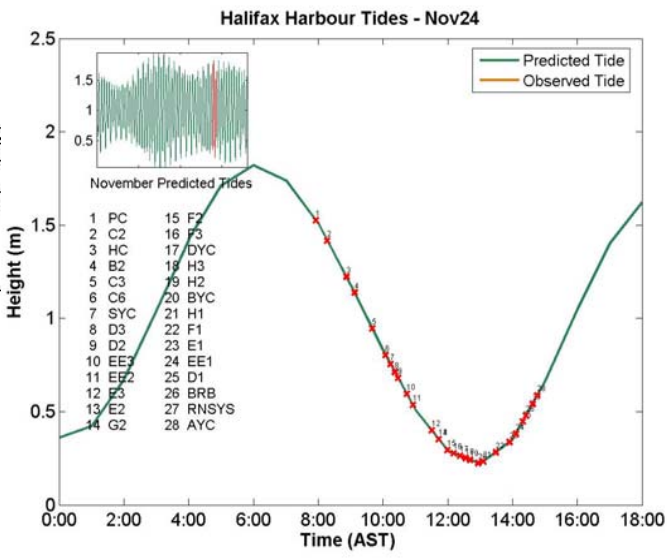
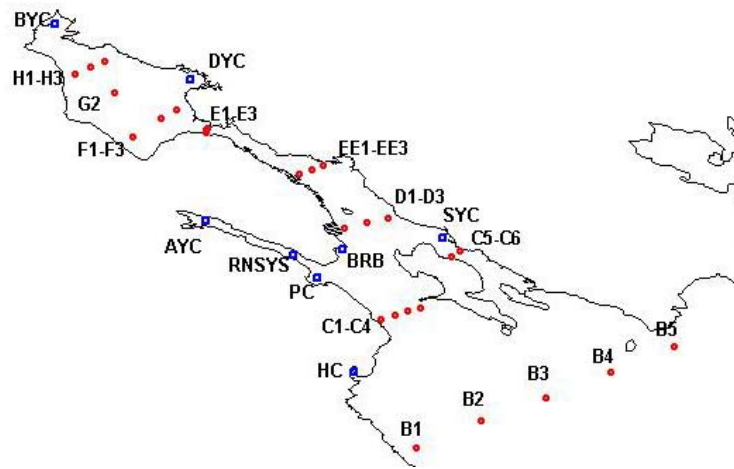


Density in kg/m³

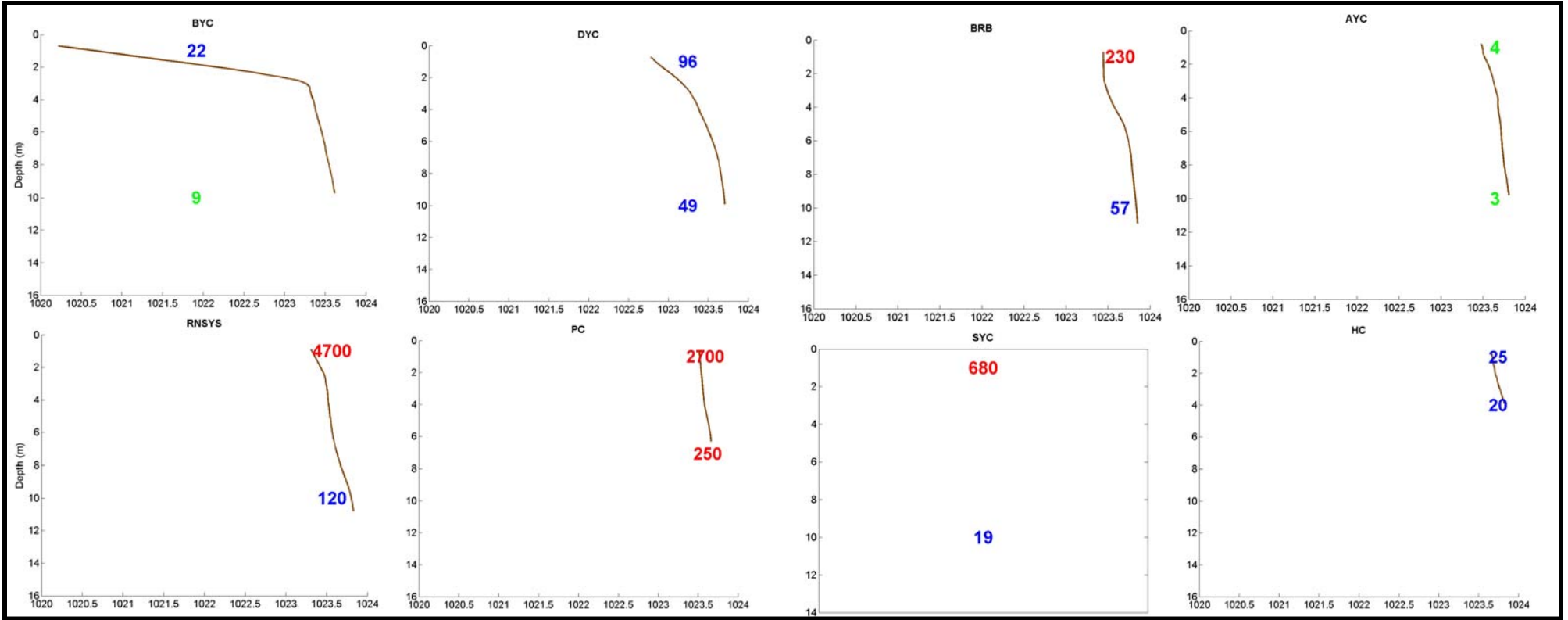
Fecal coliform: below limits

above shellfish limit (14 cfu/100mL)

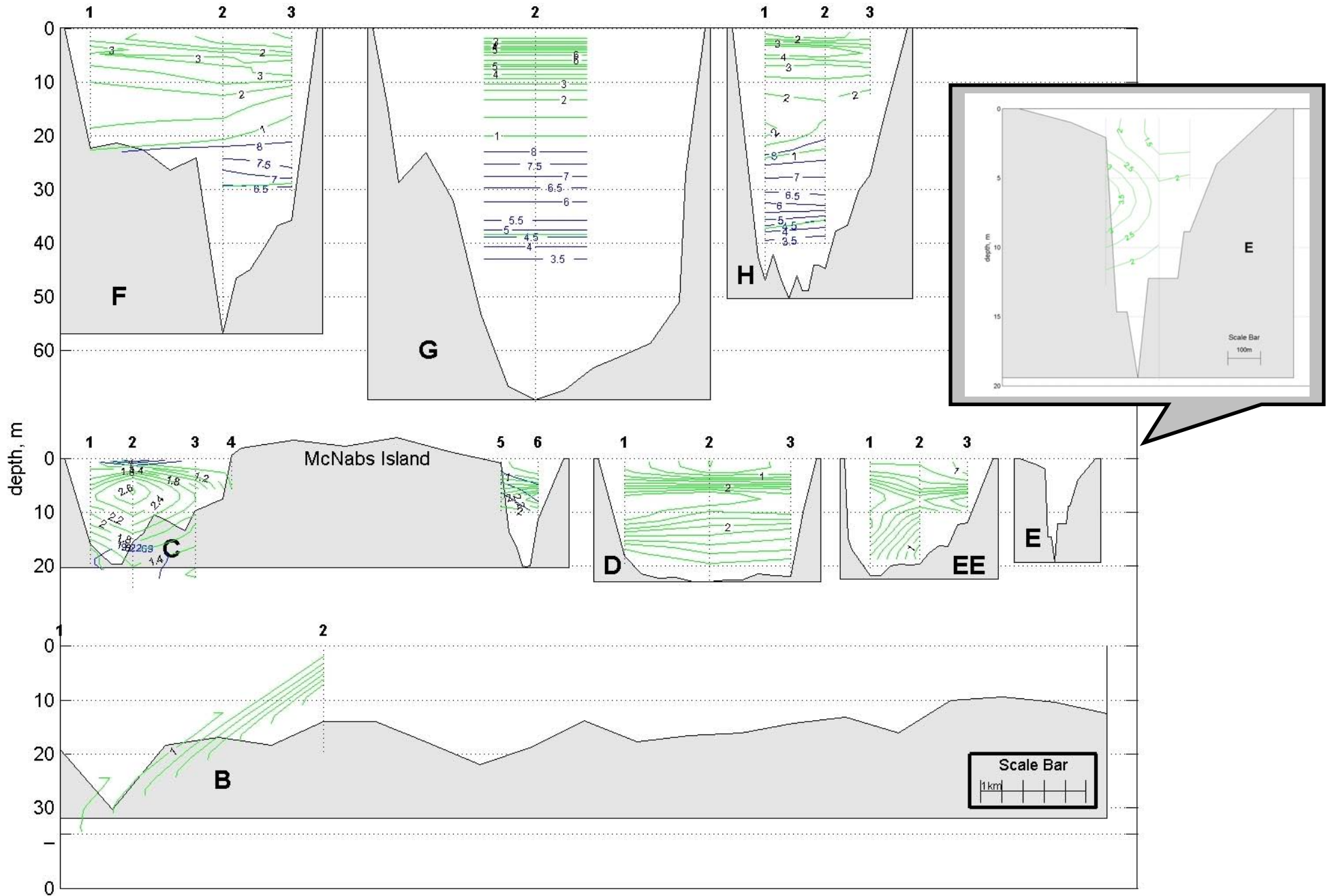
above swimming limit (200 cfu/100mL)



Yacht Clubs

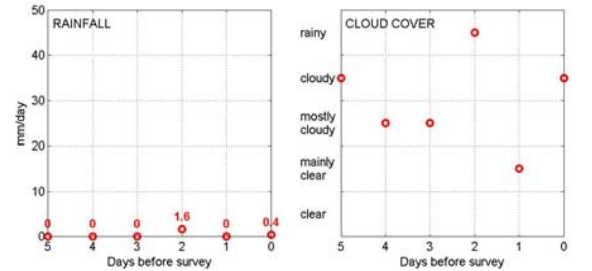
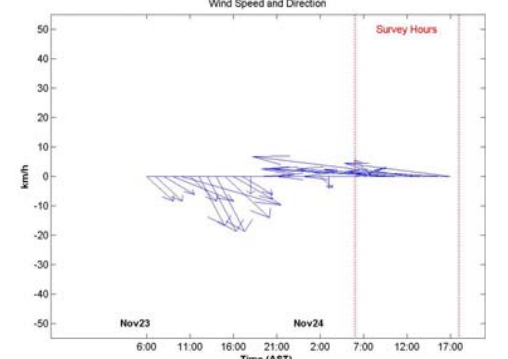
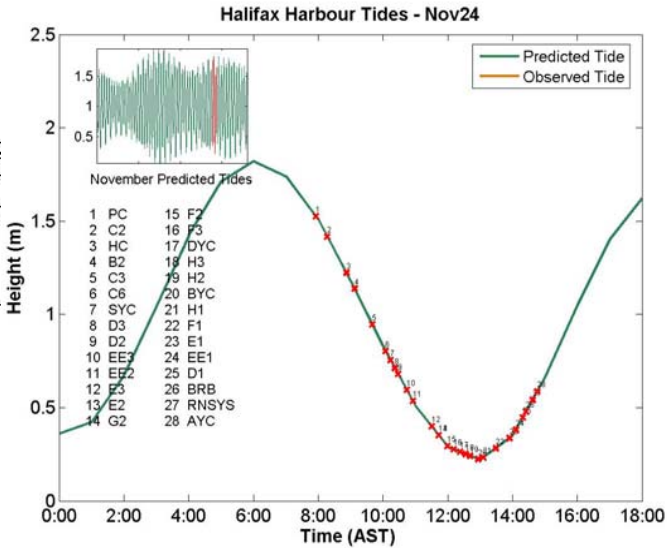
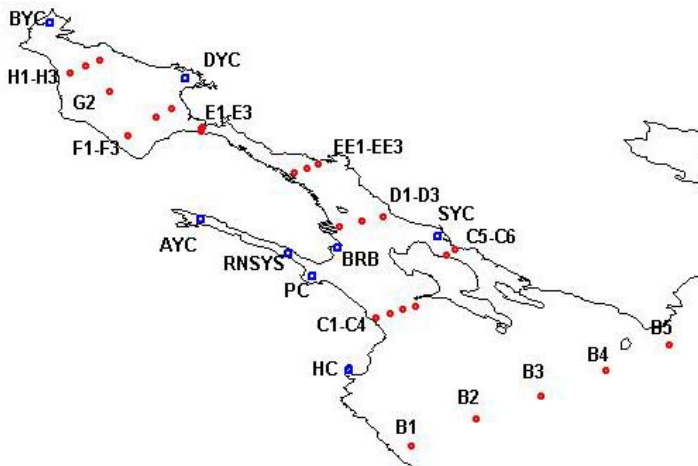


Density in kg/m^3 Fecal coliform: **below limits**
 above shellfish limit (14 cfu/100mL)
 above swimming limit (200 cfu/100mL)

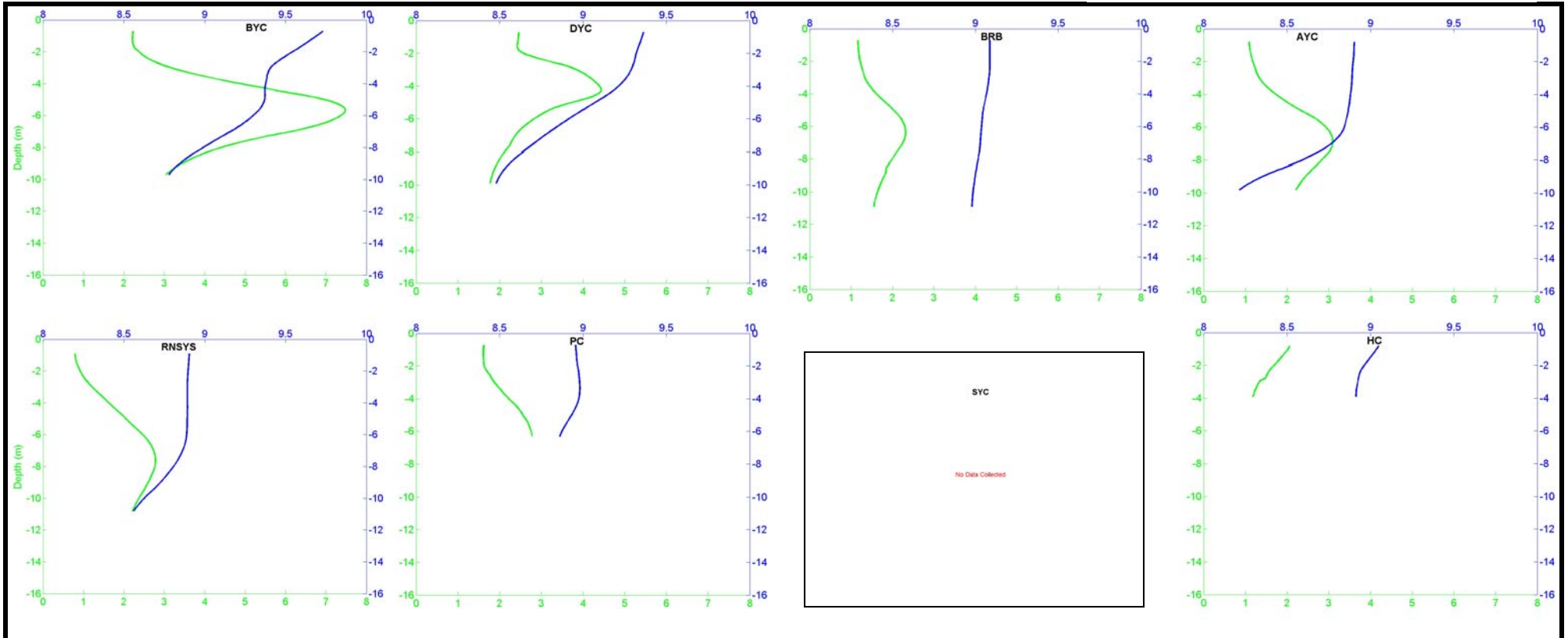


DO in mg/L

Chlorophyll in mg/m³

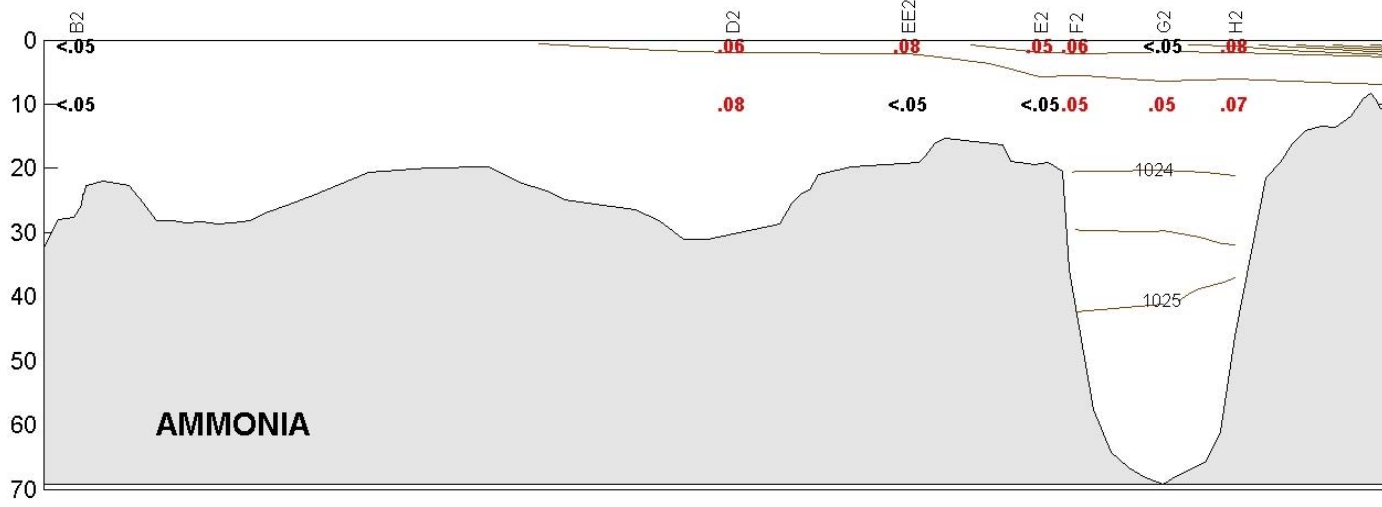
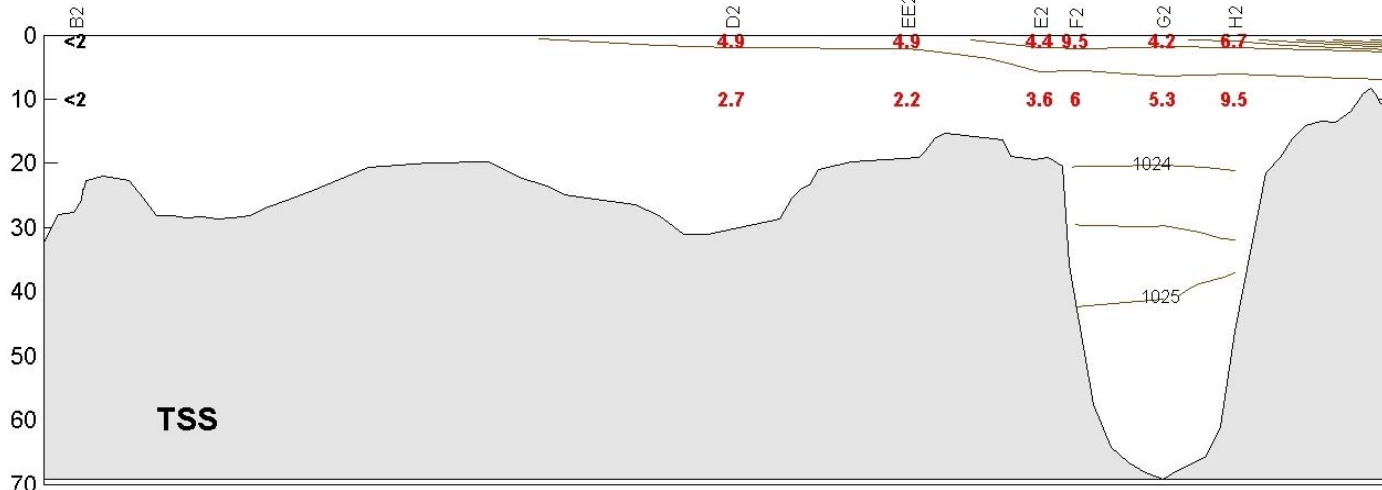


Yacht Clubs



DO in mg/L Chlorophyll in mg/m³

CHEMISTRY



Density in kg/m³

Ammonia in mg/L

TSS in mg/L

